

CHRISTIE'S  
INTERNATIONAL REAL ESTATE

— DUBAI —

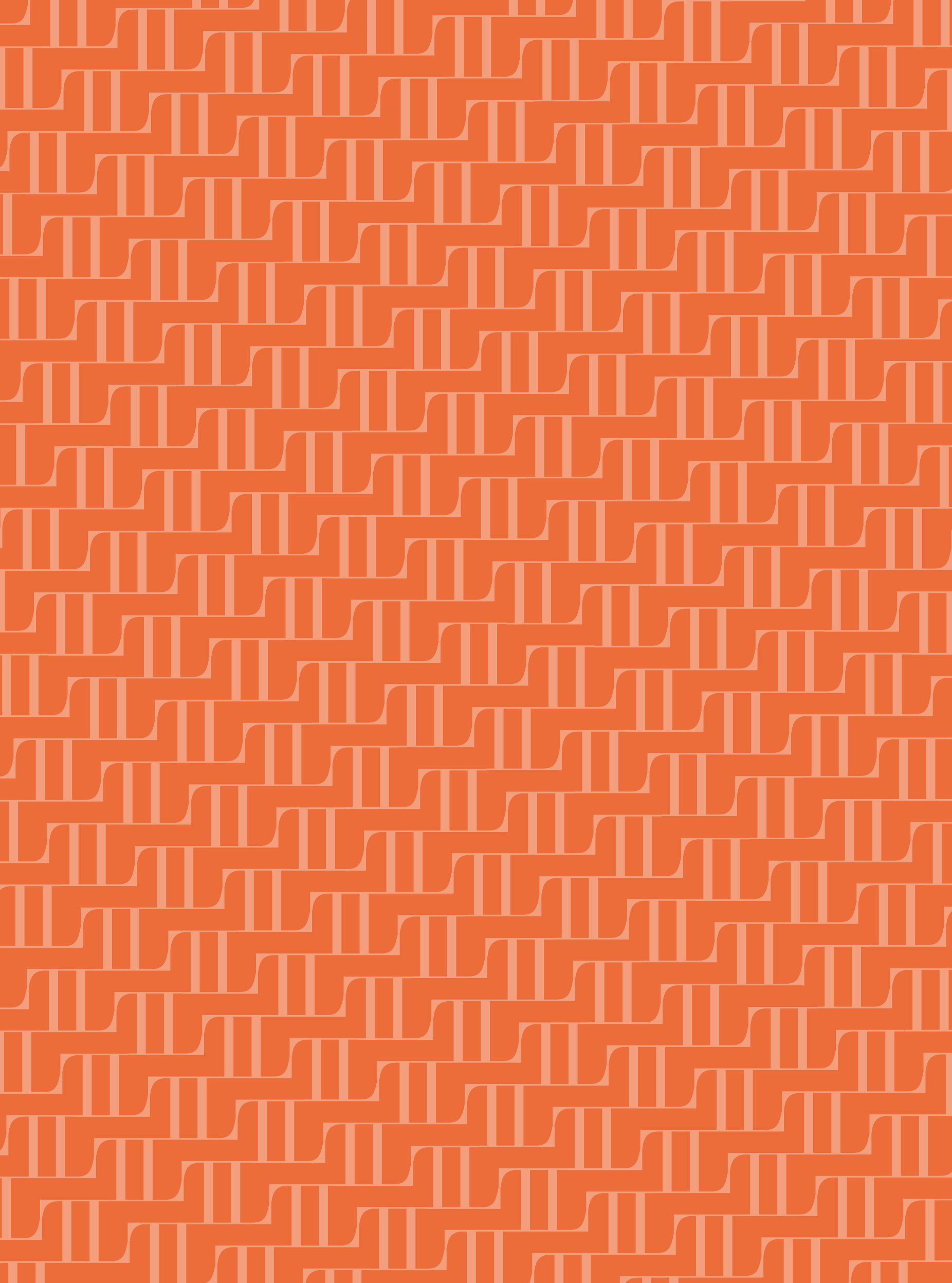
TL  
THE  
LUCAN

CHELSEA, LONDON

---

AUTOGRAPH COLLECTION®  
RESIDENCES

FLOORPLANS



TL  
THE  
LUCAN

CHELSEA, LONDON

---

AUTOGRAPH COLLECTION®  
RESIDENCES

# INTERIORS SPECIFICATION

## KITCHEN

- Bespoke-designed, fitted kitchens incorporating concealed handle, soft-closing doors and drawers throughout
- High quality cupboard doors - bianco matt lacquer (low level) and gold metal effect lacquer (high level)
- Concealed refuse and recycling storage
- Stone worktops with tinted mirror splashbacks

## APPLIANCES

- Miele Single oven
- Miele Combination oven microwave and grill
- Miele Flush Fitting Induction Hob - 4 zones
- Miele Cooker Hood
- Miele Drinks Fridge
- Miele Warming Drawers
- Integrated Fridge Freezer
- Fully-integrated Dishwasher
- Fully-integrated Washer Dryer
- Under mounted sink with deck mounted 'instant hot & filter' water tap

## BATHROOMS AND EN-SUITES

- Porcelain/stone on walls and floor
- Porcelain, top mounted hand basins with mixer tap (twin basins in Master En-suites)
- Mosaic stone on floors in Master En-suite
- Concealed feature lighting
- Heated towel rails
- Frameless, glass shower screens
- Floor level 'wet room' showers in Master En-suites
- Wall-mounted toilet roll holder and robe hooks in bronze
- Wall-mounted dual flush WCs with soft-close seat covers and concealed cistern (Geberit Aquaclean WCs in Master En-suites)
- Philip Stark designed WCs in master and guest bathrooms with SensoWash
- Wall hung WC in Powder Room with WC SensoWash Starck Plus
- Ceiling-mounted 'rain head' showers and separate hand showers in shower areas
- Underfloor heating

## INTERIOR FINISHES: APARTMENTS

- Walls and ceilings to be finished in white matt paint (where other finishes are not applied)
- Bespoke fitted full height wardrobes in all bedrooms, (fitted internally with rails, shelves and drawers)
- Multi-point locking full height front door with spyhole
- Antique brass and leather finish door lever throughout
- Natural oak timber flooring in hall, living room, kitchen and all bedrooms
- Feature panels on walls
- Feature on ceiling

## COMMON AREAS (ENTRANCE LOBBY)

- Feature entrance lobby with bespoke concierge desk
- Polished stone tiling on floor with feature stone border
- Fabric feature panels with stone skirting

## COMMON AREAS (COMMON CORRIDORS ON 1<sup>ST</sup> TO 7<sup>TH</sup> FLOOR)

- Stone in residential corridors and lift lobbies
- Timber architraves for doors
- Polished plaster with feature resin panel and metal architrave

## OTHER FEATURES: APARTMENTS

- Openable windows
- Minimum ceiling height 2.5m principal rooms with feature coffered ceiling of over 2.7m

## COMMON PARTS

- Secure bicycle storage available for all apartments
- Lift access to all floors with bespoke finishes consisting of leather, stone and mirror

## ELECTRICAL

- Video/audio door entry system
- Mood lighting in principal living areas
- Metal faced, slim line switches and sockets
- Energy efficient lighting throughout
- Feature lighting in select locations throughout

## TELECOMMUNICATIONS

- Wiring for TV, Sky and data connection in living room and bedrooms

## HEATING AND COOLING

- Thermostatically controlled comfort heating and cooling in all living rooms and bedrooms
- Electric underfloor heating in bathrooms

## PRIVACY AND PEACE OF MIND

- Access to apartments via full colour video door entry and electronic access to common areas
- Key fob security entry into the building
- CCTV in ground floor entrances and common areas
- Mains supply heat/smoke detectors to all apartments
- Smoke detection to common areas

## ADAPTABILITY

- Some apartments are wheelchair-adaptable; please ask for details



Time at The Lucan isn't just about living from day to day.

It's about true belonging, connection, and community. Making the world your world – and ensuring your home reflects your style and identity.

Overseeing each bespoke residence, The Luminary is a daring new type of concierge which combines the ultimate in prestige hospitality and Marriott Bonvoy benefits with an intuitive – and unrivalled – sense of service.

Whether you want to work, play, relax or retreat, The Luminary ensures you have an incomparable

mixture of everyday, on-demand and exclusive services and amenities at your fingertips. From housekeeping, travel, groceries and wellbeing, to in-house tailoring, private dining and sourcing the finest epicurean experiences London has to offer: The Luminary is by your side.

An Autograph Collection residence, exactly like nothing else. With a level of hospitality and service – exactly like nowhere else.



Personal Shopping



Wellness



Elite Marriott Bonvoy Status

# The art of living, without limits



Top London Chefs

**ELITE MARRIOTT BONVOY STATUS**  
Exclusive Elite Marriott Bonvoy Benefits

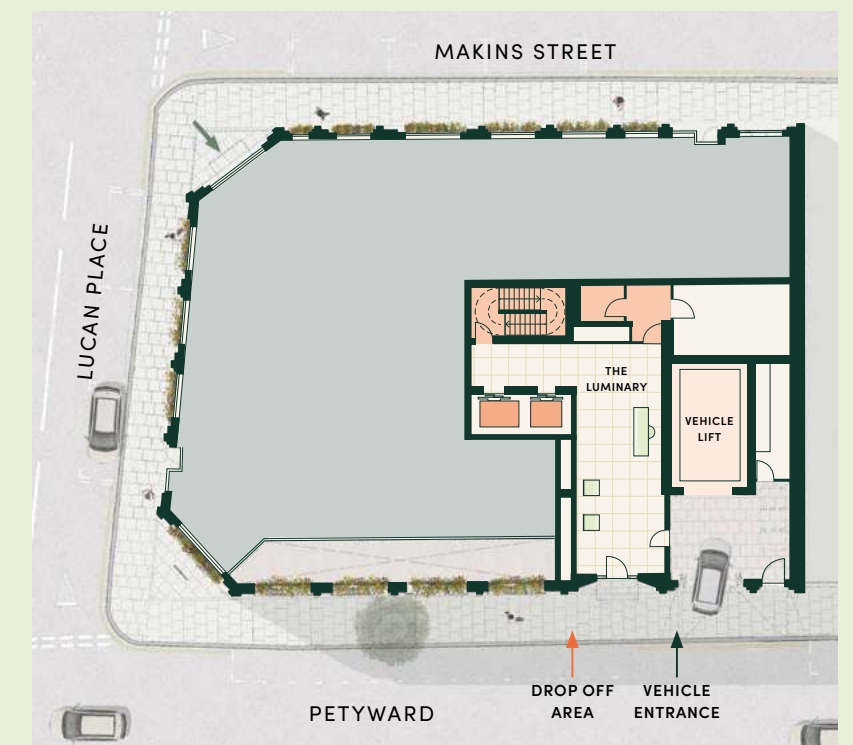
- EVERYDAY**
- 24/7 Concierge
  - 24/7 Valet Parking
  - Residential Operations Manager
  - Housekeeping (Common Areas)
  - Gym

- ON DEMAND**
- Arrival Preparation
  - Personal Chauffeur
  - Butlers & House Maids
  - Housekeeping (Residences)
  - Wellness
  - Personal Trainers
  - Gift Arrangement
  - Travel Arrangements
  - Grocery Shopping Service
  - Dog Walking / Pet Care
  - Plant Care
  - Florist Services

- EXCLUSIVE EXPERIENCES**
- Private Dining
  - Parties & Events
  - Top London Chefs
  - Top London Tailoring
  - Personal Shopping Service



Personal Chauffeur



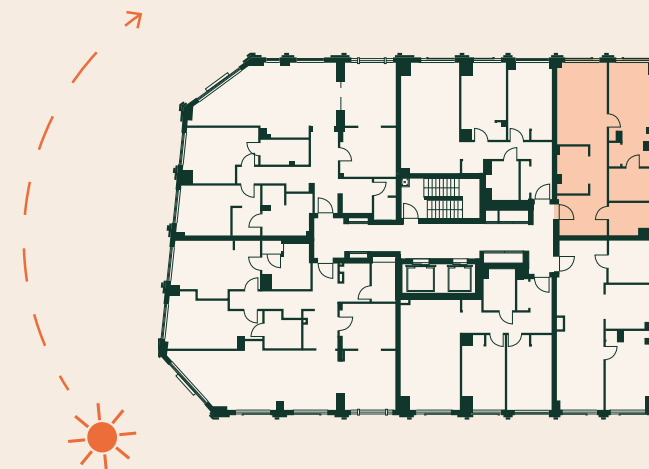
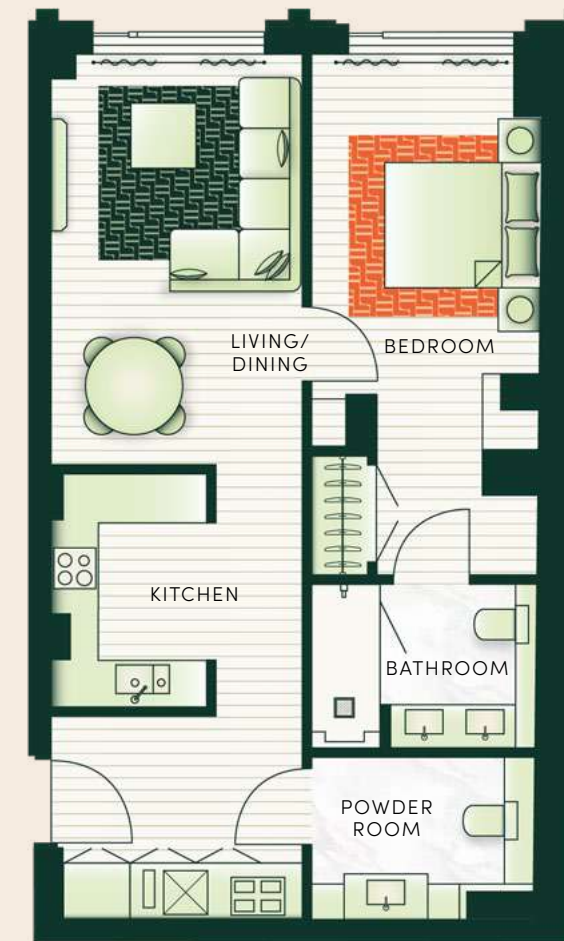
24/7 Valet Parking

# FLOOR PLANS

FLOORPLANS

## 1 BEDROOM - TYPE 1

UNIT NOs. 103



LIVING/DINING	3.30M x 5.50M
KITCHEN	3.10M x 2.00M
BEDROOM	3.30M x 3.30M
BATHROOM	3.30M x 2.00M
POWDER ROOM	2.60M x 2.00M
<b>TOTAL AREA</b>	<b>74 SQ. M.</b>

Any areas, measurements or distances are approximate. These particulars are prepared for preliminary plans and specifications before the completion of the properties and are only intended as a guide. They may have been changed during construction and final finishes could vary.

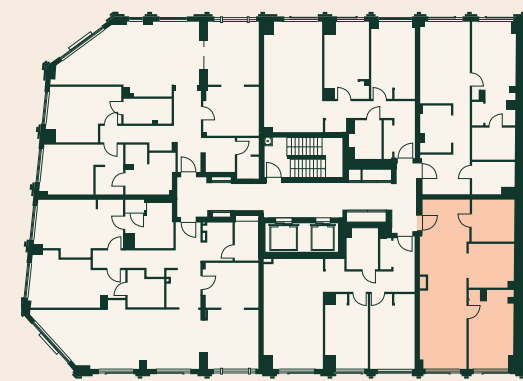
# 1 BEDROOM - TYPE 2

UNIT NOS. 104

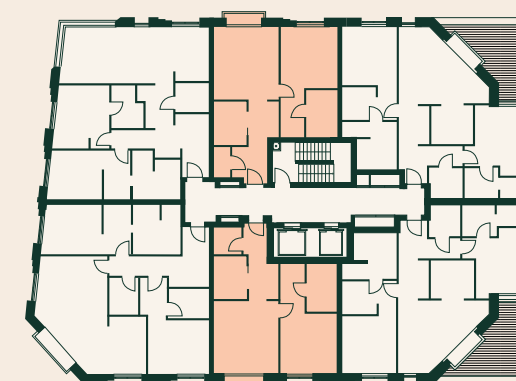


# 1 BEDROOM - TYPE 3

UNIT NOS. 202, 205, 302, 305, 402 & 405



LIVING/DINING	3.30M x 5.50M
KITCHEN	2.80M x 3.30M
BEDROOM	3.30M x 4.64M
BATHROOM	2.50M x 3.00M
<b>TOTAL AREA</b>	<b>70 SQ. M.</b>

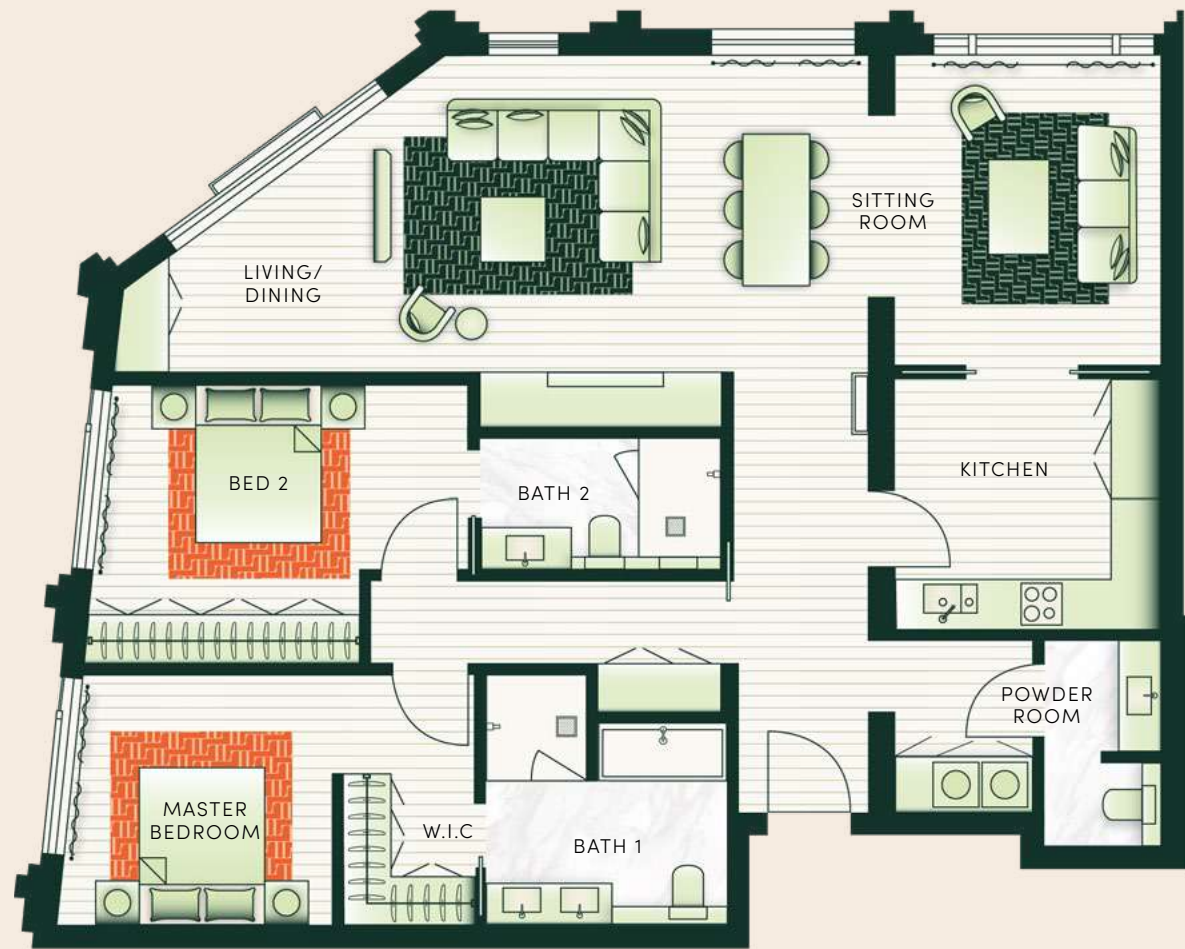


LIVING/DINING	4.30M x 4.80M
KITCHEN	2.10M x 2.80M
BEDROOM	3.70M x 4.00M
BATHROOM	2.00M x 3.00M
POWDER ROOM	1.00M x 2.00M
<b>TOTAL AREA</b>	<b>74 SQ. M.</b>



## 2 BEDROOM - TYPE 1

UNIT NOS. 101



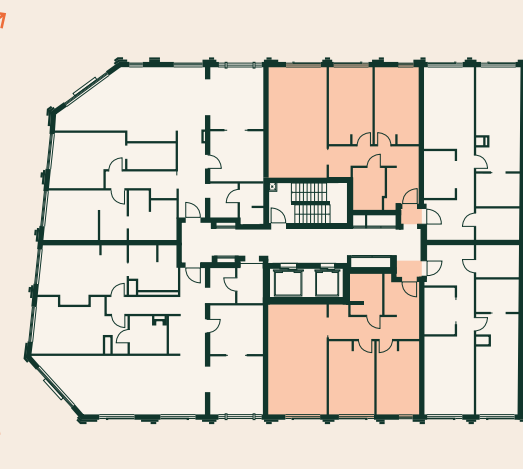
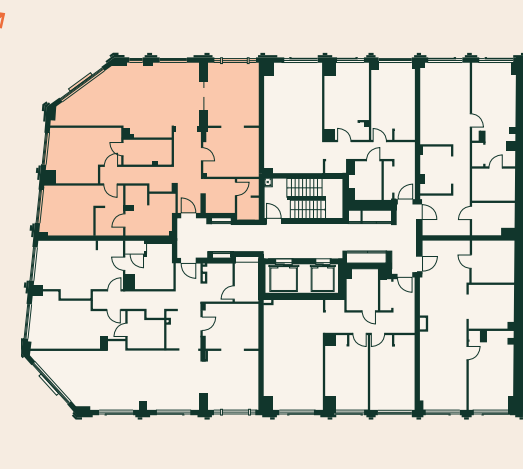
## 2 BEDROOM - TYPE 2

UNIT NOS. 102, 105



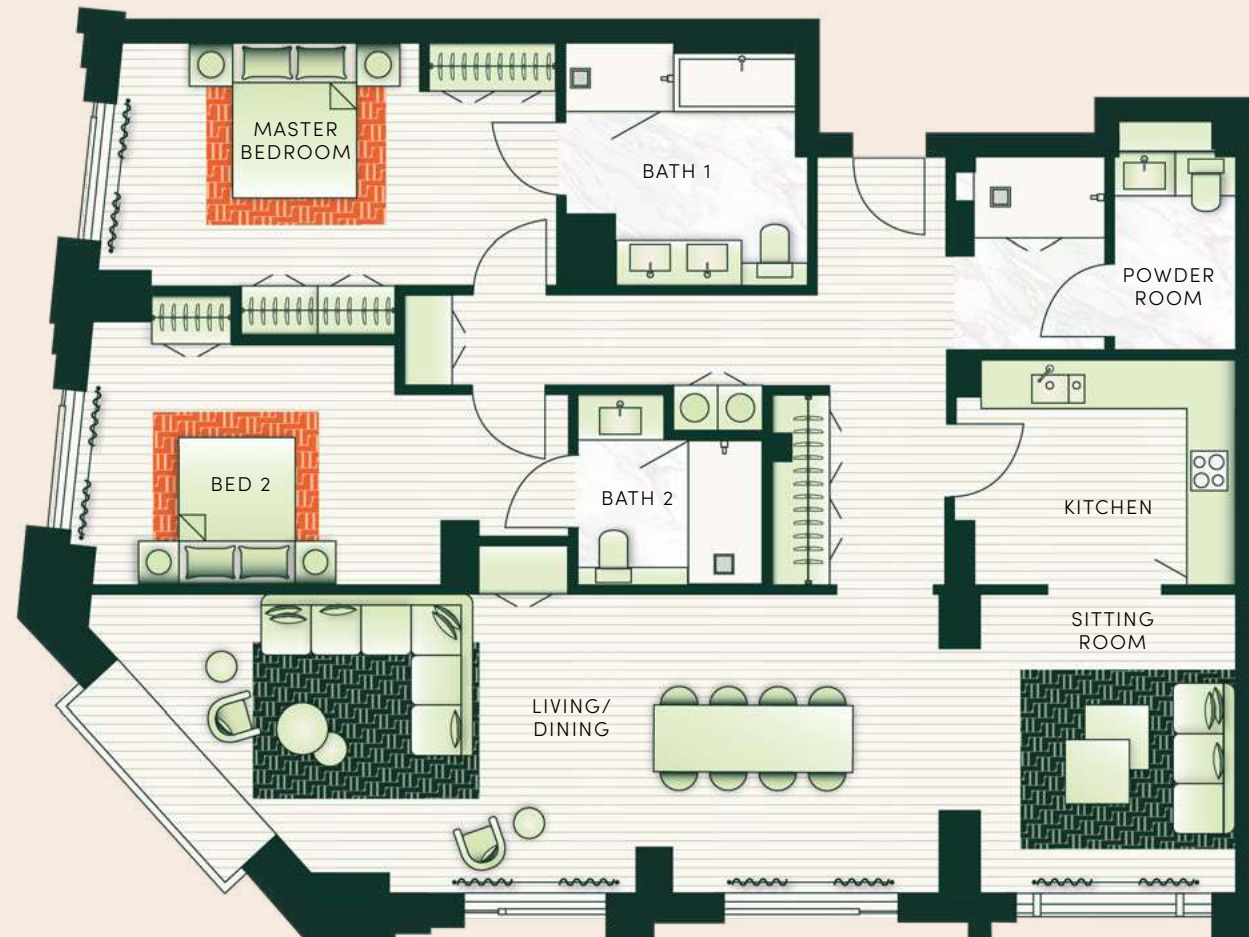
LIVING/DINING	13.00M x 4.20M
SITTING AREA	3.50M x 4.10M
KITCHEN	3.50M x 3.30M
MASTER BEDROOM	3.25M x 3.30M
BEDROOM 2	4.50M x 3.00M
BATHROOM 1	3.15M x 2.65M
BATHROOM 2	3.20M x 1.70M
POWDER ROOM	1.50M x 2.70M
<b>TOTAL AREA</b>	<b>147 SQ. M.</b>

LIVING/DINING	3.80M x 5.30M
KITCHEN	3.80M x 2.00M
MASTER BEDROOM	2.90M x 5.10M
BEDROOM 2	2.90M x 5.10M
BATHROOM	2.10M x 2.80M
<b>TOTAL AREA</b>	<b>82 SQ. M.</b>



## 2 BEDROOM - TYPE 3

UNIT NOs. 106

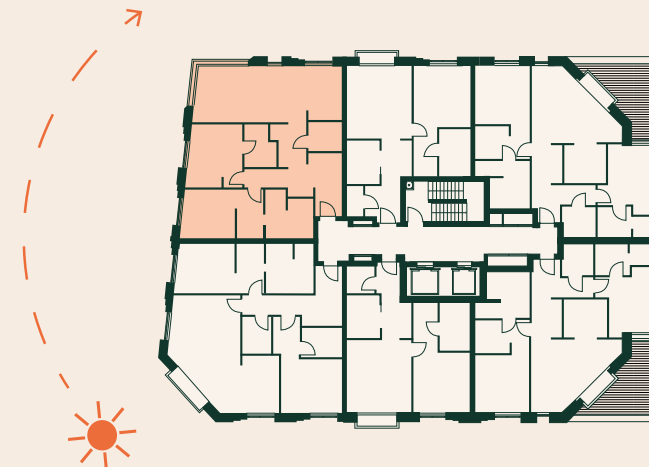


## 2 BEDROOM - TYPE 4

UNIT NOs. 201, 301 & 401



LIVING/DINING	9.50M x 4.30M
SITTING AREA	4.00M x 3.40M
KITCHEN	3.60M x 3.00M
MASTER BEDROOM	5.50M x 3.30M
BEDROOM 2	6.20M x 3.30M
BATHROOM 1	3.20M x 3.20M
BATHROOM 2	2.50M x 2.40M
POWDER ROOM	2.00M x 2.80M
<b>TOTAL AREA</b>	<b>156 SQ. M.</b>

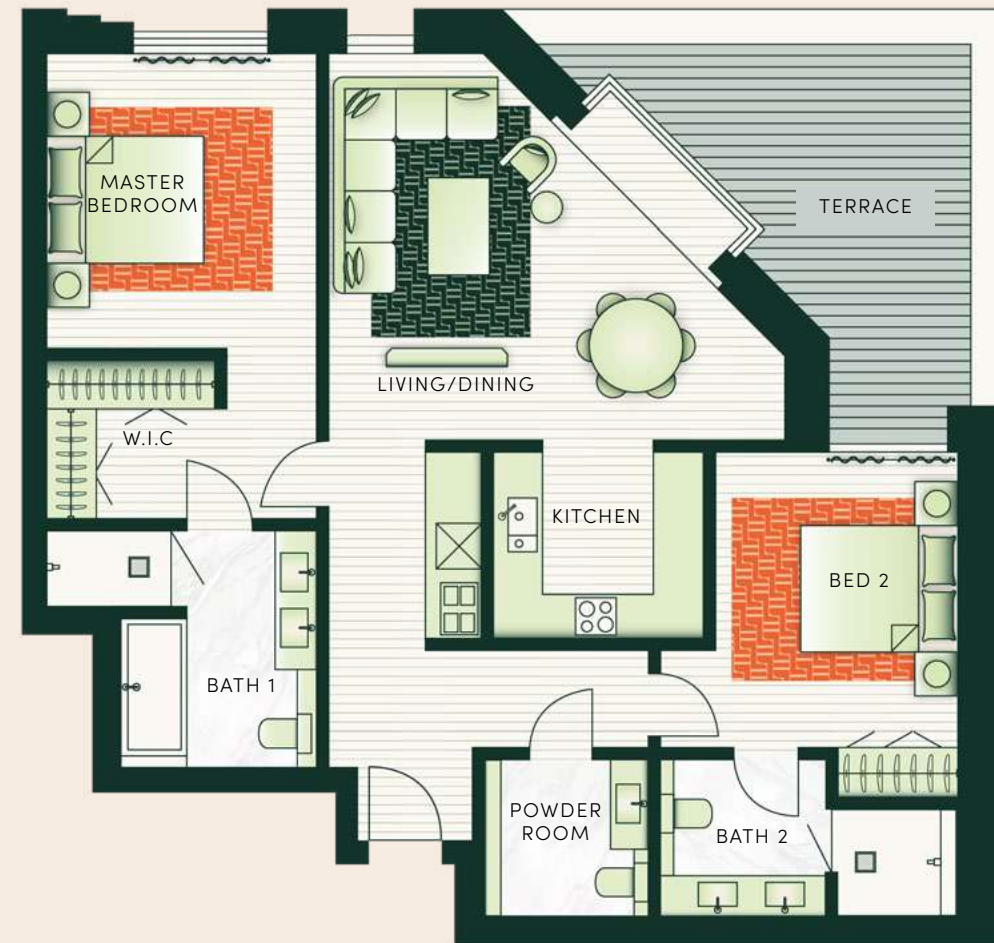


LIVING/DINING	7.10M x 3.70M
KITCHEN	2.30M x 2.90M
MASTER BEDROOM	3.20M x 3.30M
BEDROOM 2	3.30M x 4.10M
BATHROOM 1	3.10M x 2.60M
BATHROOM 2	2.10M x 2.70M
POWDER ROOM	2.20M x 1.80M
<b>TOTAL AREA</b>	<b>115 SQ. M.</b>



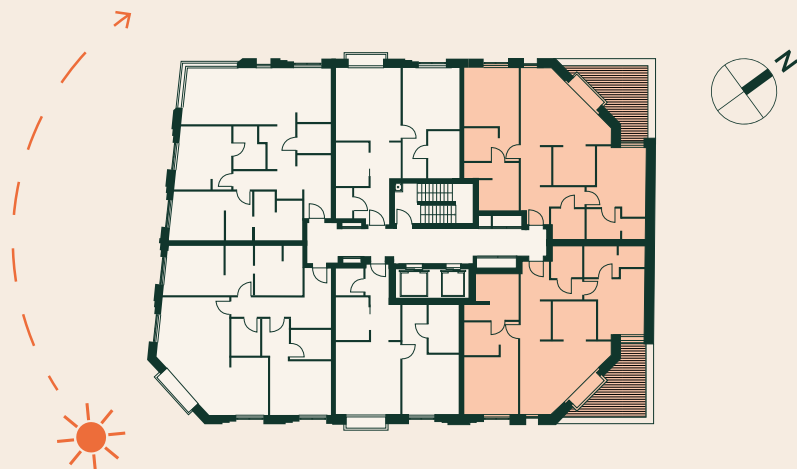
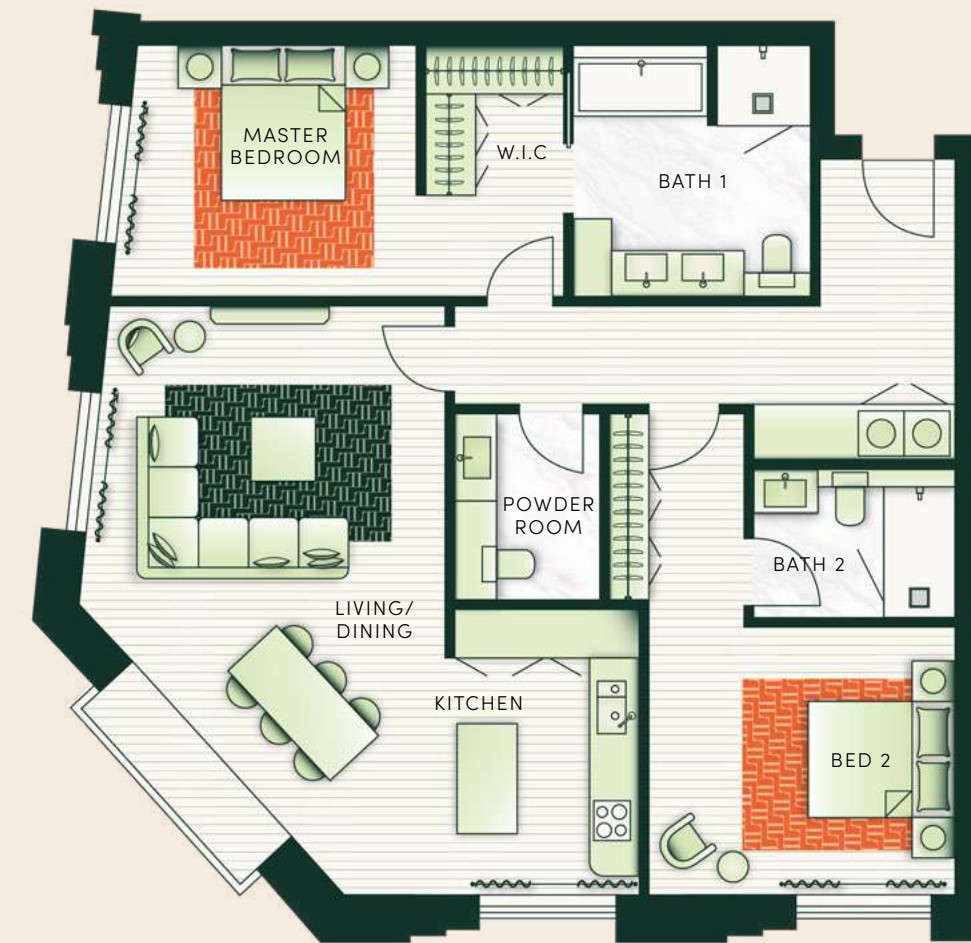
## 2 BEDROOM - TYPE 5

UNIT NOS. 203 & 204

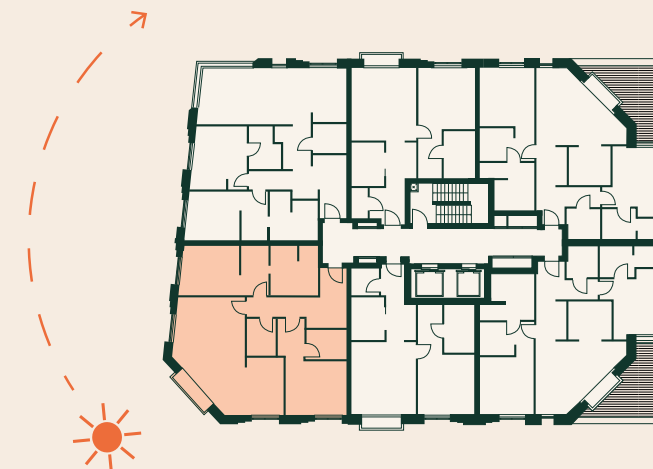


## 2 BEDROOM - TYPE 6

UNIT NOS. 206, 306 & 406



LIVING/DINING	6.00M x 5.10M
KITCHEN	2.70M x 2.50M
MASTER BEDROOM	3.60M x 3.90M
BEDROOM 2	3.20M x 3.90M
BATHROOM 1	2.60M x 3.10M
BATHROOM 2	3.80M x 2.00M
POWDER ROOM	2.20M x 2.00M
<b>TERRACE AREA</b>	<b>14 SQ. M.</b>
<b>TOTAL AREA</b>	<b>124 SQ. M.</b>



LIVING/DINING	4.30M x 7.70M
KITCHEN	2.50M x 3.10M
MASTER BEDROOM	3.60M x 3.30M
BEDROOM 2	4.00M x 3.50M
BATHROOM 1	3.10M x 3.30M
BATHROOM 2	2.60M x 1.90M
POWDER ROOM	1.80M x 2.40M
<b>TOTAL AREA</b>	<b>121 SQ. M.</b>

## 2 BEDROOM - TYPE 7

UNIT NOs. 303, 304, 403 & 404



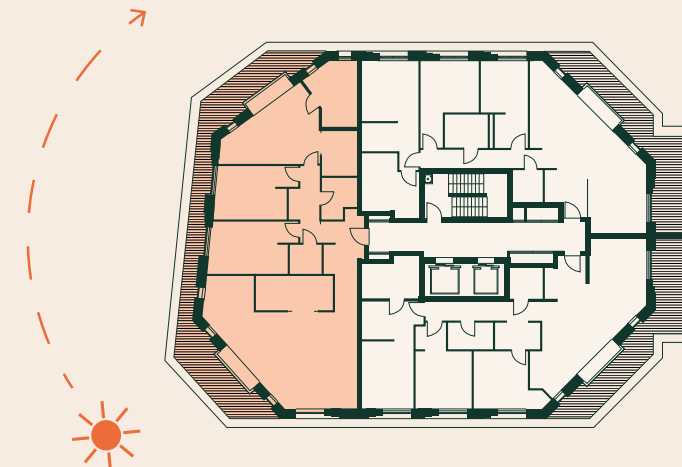
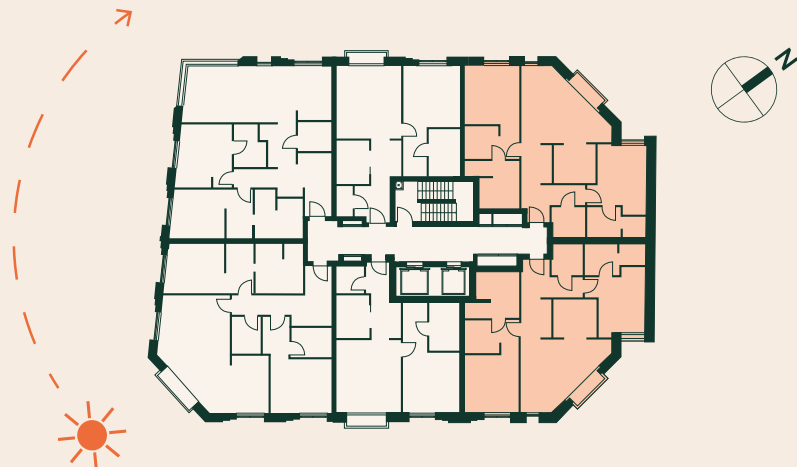
LIVING/DINING	6.00M x 5.10M
KITCHEN	2.70M x 2.50M
MASTER BEDROOM	3.60M x 3.90M
BEDROOM 2	3.20M x 3.90M
BATHROOM 1	2.60M x 3.10M
BATHROOM 2	3.80M x 2.00M
POWDER ROOM	2.20M x 2.00M
<b>TOTAL AREA</b>	<b>109 SQ. M.</b>

## 3 BEDROOM - TYPE 1

UNIT 501



LIVING/DINING	8.30M x 6.00M
KITCHEN	4.70M x 2.10M
SITTING AREA	3.00M x 2.30M
MASTER BEDROOM	6.00M x 4.00M
BEDROOM 2	3.60M x 3.30M
BEDROOM 3	4.00M x 3.20M
BATHROOM 1	2.20M x 4.10M
BATHROOM 2	2.80M x 3.10M
POWDER ROOM	1.90M x 1.80M
<b>TERRACE AREA</b>	<b>48 SQ. M.</b>
<b>TOTAL AREA</b>	<b>226 SQ. M.</b>





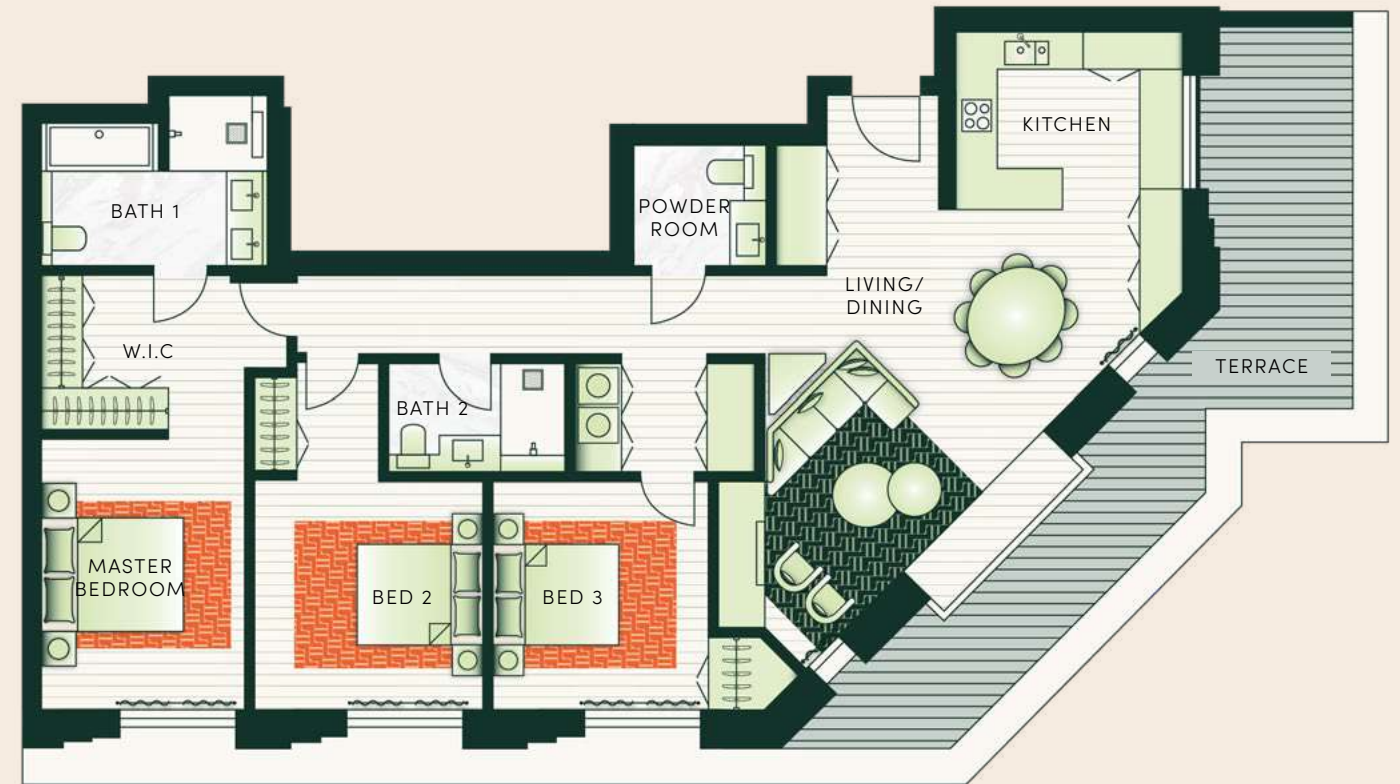
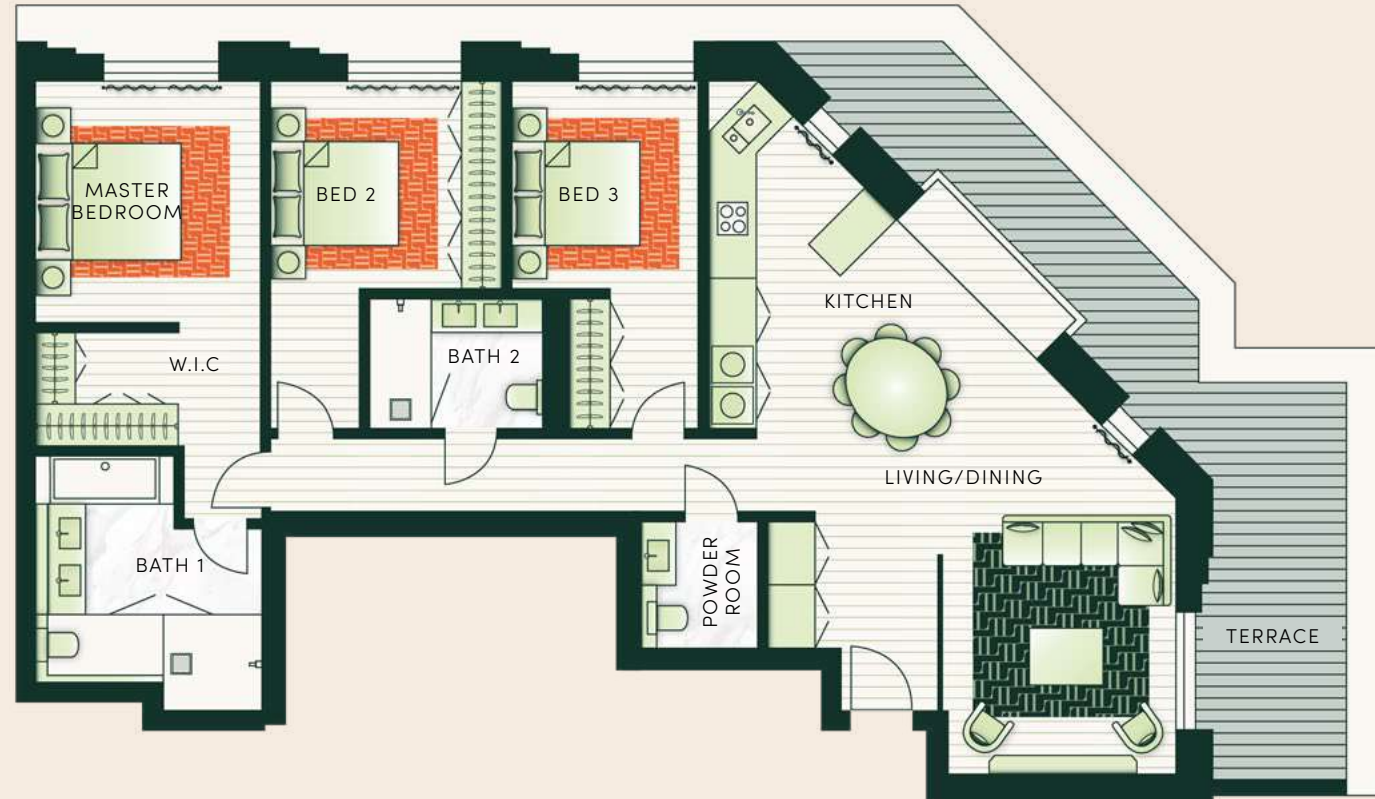
### 3 BEDROOM - TYPE 2

UNIT 502



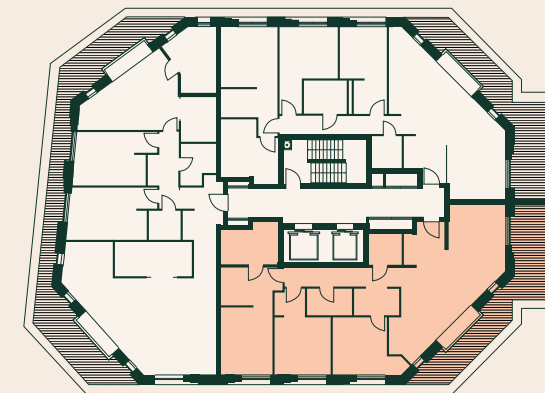
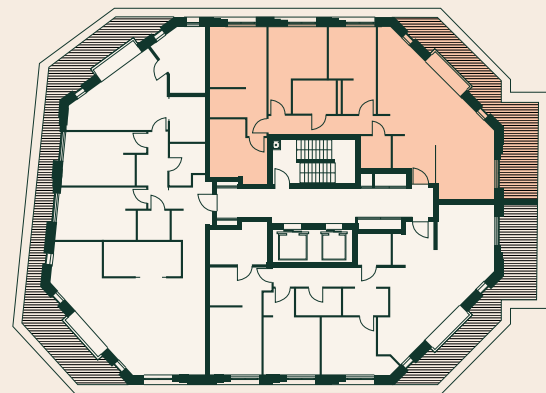
### 3 BEDROOM - TYPE 3

UNIT 503



LIVING	3.60M x 4.00M
DINING	4.00M x 4.50M
KITCHEN	3.00M x 2.40M
MASTER BEDROOM	4.00M x 3.50M
BEDROOM 2	3.60M x 3.20M
BEDROOM 3	2.90M x 3.20M
BATHROOM 1	3.50M x 3.50M
BATHROOM 2	2.60M x 2.00M
POWDER ROOM	1.80M x 1.90M
<b>TERRACE AREA</b>	<b>26 SQ. M.</b>
<b>TOTAL AREA</b>	<b>166 SQ. M.</b>

LIVING/DINING	6.70M x 4.00M
KITCHEN	3.50M x 2.70M
MASTER BEDROOM	3.20M x 4.20M
BEDROOM 2	3.50M x 3.60M
BEDROOM 3	3.30M x 3.60M
BATHROOM 1	3.40M x 2.20M
BATHROOM 2	2.70M x 1.60M
POWDER ROOM	2.00M x 1.90M
<b>TERRACE</b>	<b>26 SQ. M.</b>
<b>TOTAL AREA</b>	<b>164 SQ. M.</b>



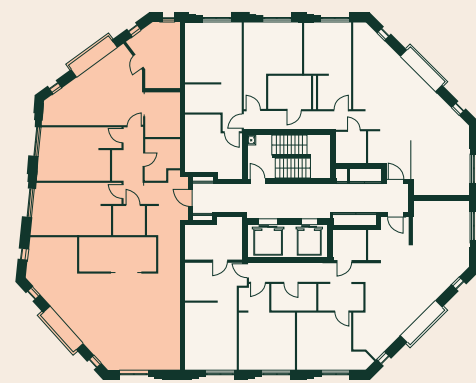


### 3 BEDROOM - TYPE 4

UNIT 601

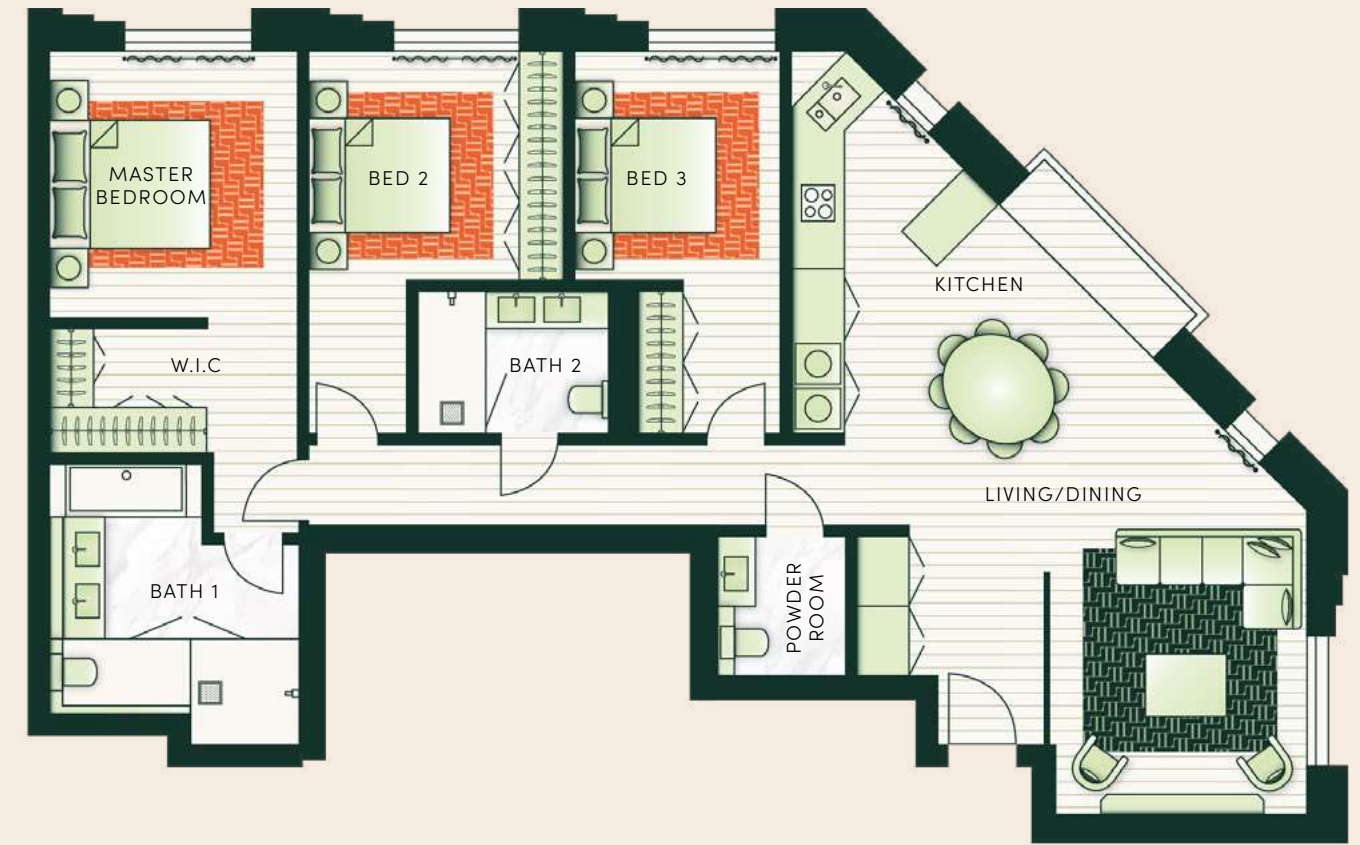


LIVING/DINING	8.30M x 6.00M
KITCHEN	4.70M x 2.10M
SITTING AREA	3.00M x 2.30M
MASTER BEDROOM	6.00M x 4.00M
BEDROOM 2	3.60M x 3.30M
BEDROOM 3	4.00M x 3.20M
BATHROOM 1	2.20M x 4.10M
BATHROOM 2	2.80M x 3.10M
POWDER ROOM	1.90M x 1.80M
<b>TOTAL AREA</b>	<b>178 SQ. M.</b>

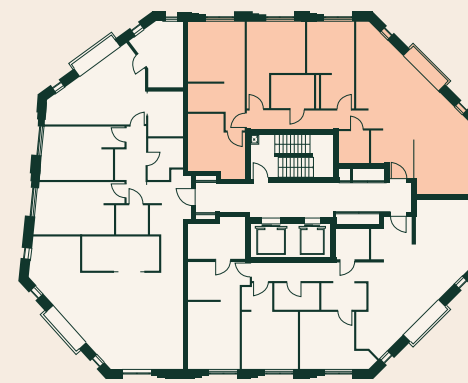


### 3 BEDROOM - TYPE 5

UNIT 602

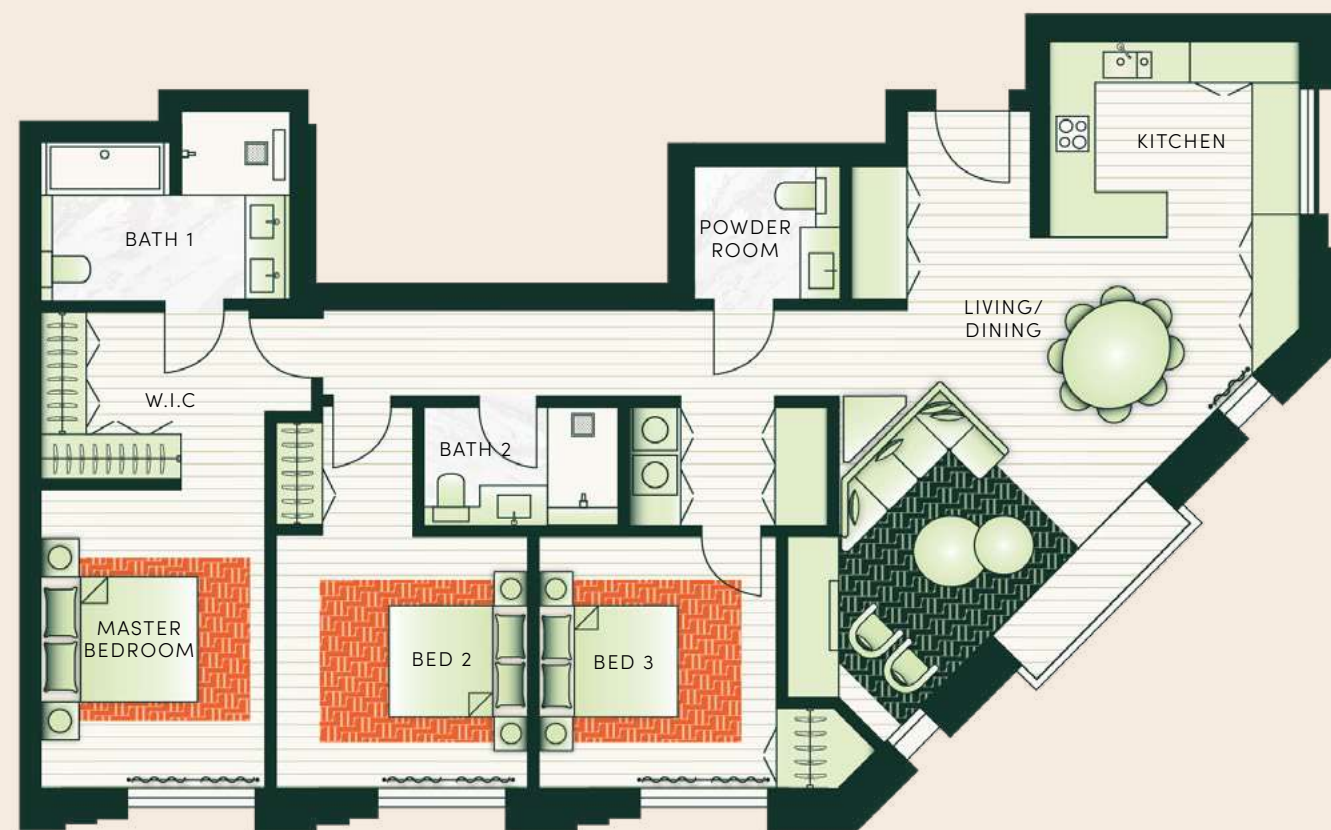


LIVING	3.60M x 4.00M
DINING	4.00M x 4.50M
KITCHEN	3.00M x 2.40M
MASTER BEDROOM	4.00M x 3.50M
BEDROOM 2	3.60M x 3.20M
BEDROOM 3	2.90M x 3.20M
BATHROOM 1	3.50M x 3.50M
BATHROOM 2	2.60M x 2.00M
POWDER ROOM	1.80M x 1.90M
<b>TOTAL AREA</b>	<b>140 SQ. M.</b>



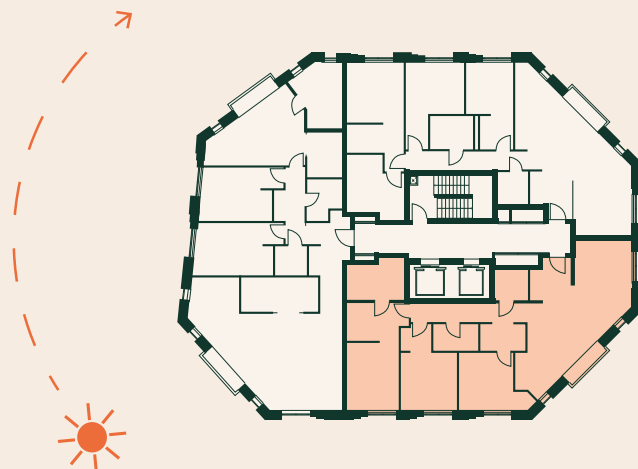
### 3 BEDROOM - TYPE 6

UNIT 603



# 701 PENTHOUSE

LIVING/DINING	6.70M x 4.00M
KITCHEN	3.50M x 2.70M
MASTER BEDROOM	3.20M x 4.20M
BEDROOM 2	3.50M x 3.60M
BEDROOM 3	3.30M x 3.60M
BATHROOM 1	3.40M x 2.20M
BATHROOM 2	2.70M x 1.60M
POWDER ROOM	2.00M x 1.90M
<b>TOTAL AREA</b>	<b>139 SQ. M.</b>



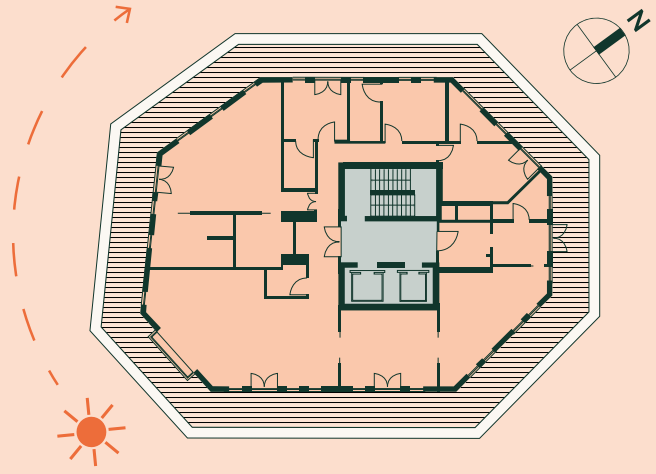


# PENTHOUSE

UNIT 701



LIVING AREA	10.60M x 6.70M
DINING ROOM	5.40M x 4.30M
KITCHEN	6.40M x 6.10M
MASTER BEDROOM	6.70M x 7.30M
BEDROOM 2	3.60M x 3.20M
BEDROOM 3	3.60M x 3.30M
BEDROOM 4	3.20M x 4.20M
BATHROOM 1	4.30M x 2.90M
BATHROOM 2	1.70M x 2.60M
BATHROOM 3	1.70M x 3.30M
BATHROOM 4	5.50M SQ. M
POWDER ROOM	2.20M x 1.50M
MAID'S ROOM	3.10M x 2.40M
<b>TERRACE AREA</b>	<b>170 SQ. M</b>
<b>TOTAL AREA</b>	<b>470 SQ. M</b>



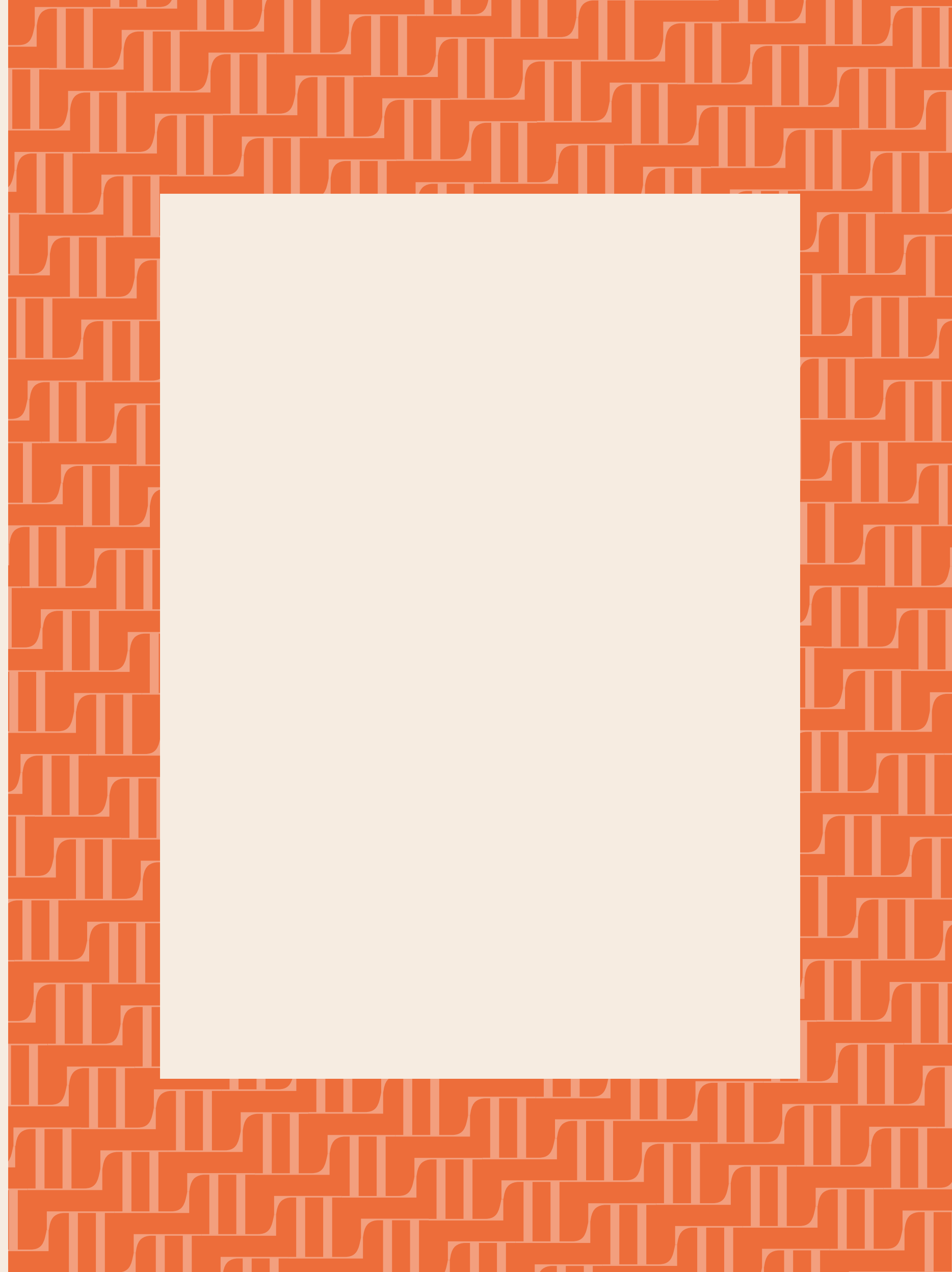


The Lucan, Autograph Collection Residences are not owned, developed or sold by Marriott International, Inc. or its affiliates ("Marriott"). Gulf Islamic Investments LLC uses Autograph Collection marks under a license from Marriott, which has not confirmed the accuracy of any of the statements or representations made herein.

Any Concept Renderings as shown for the residences are representative only, and the Developer reserves the right to make changes or substitutions of equal or better quality for any features, materials and equipment which are included with the unit. All furniture and furnishing are conceptual for representational purposes only, until and unless mentioned in the SPA.

Any areas, measurements or distances are approximate. These particulars are prepared for preliminary plans and specifications before the completion of the properties and are only intended as a guide. They may have been changed during construction and final finishes could vary.

All travel times start from development location and are sourced from Google Maps. Driving times will be dependent on time of day.



# CHRISTIE'S

INTERNATIONAL REAL ESTATE

— DUBAI —

DIFC | Dubai World Trade Centre | Business Bay

P.O. Box: 25129, Dubai, UAE, ORN 11814  
+971 4 425 2780 | [info@christiesrealestatedubai.com](mailto:info@christiesrealestatedubai.com) | [www.christiesrealestatedubai.com](http://www.christiesrealestatedubai.com)