

CHRISTIE'S
INTERNATIONAL REAL ESTATE

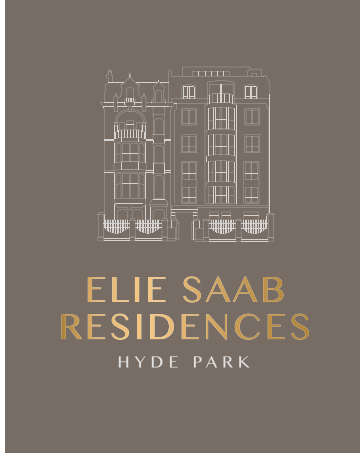
— DUBAI —



ELIE SAAB RESIDENCES

HYDE PARK

ELIE SAAB X GII



GROUND FLOOR

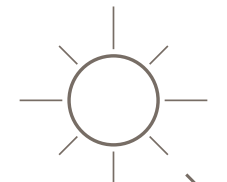
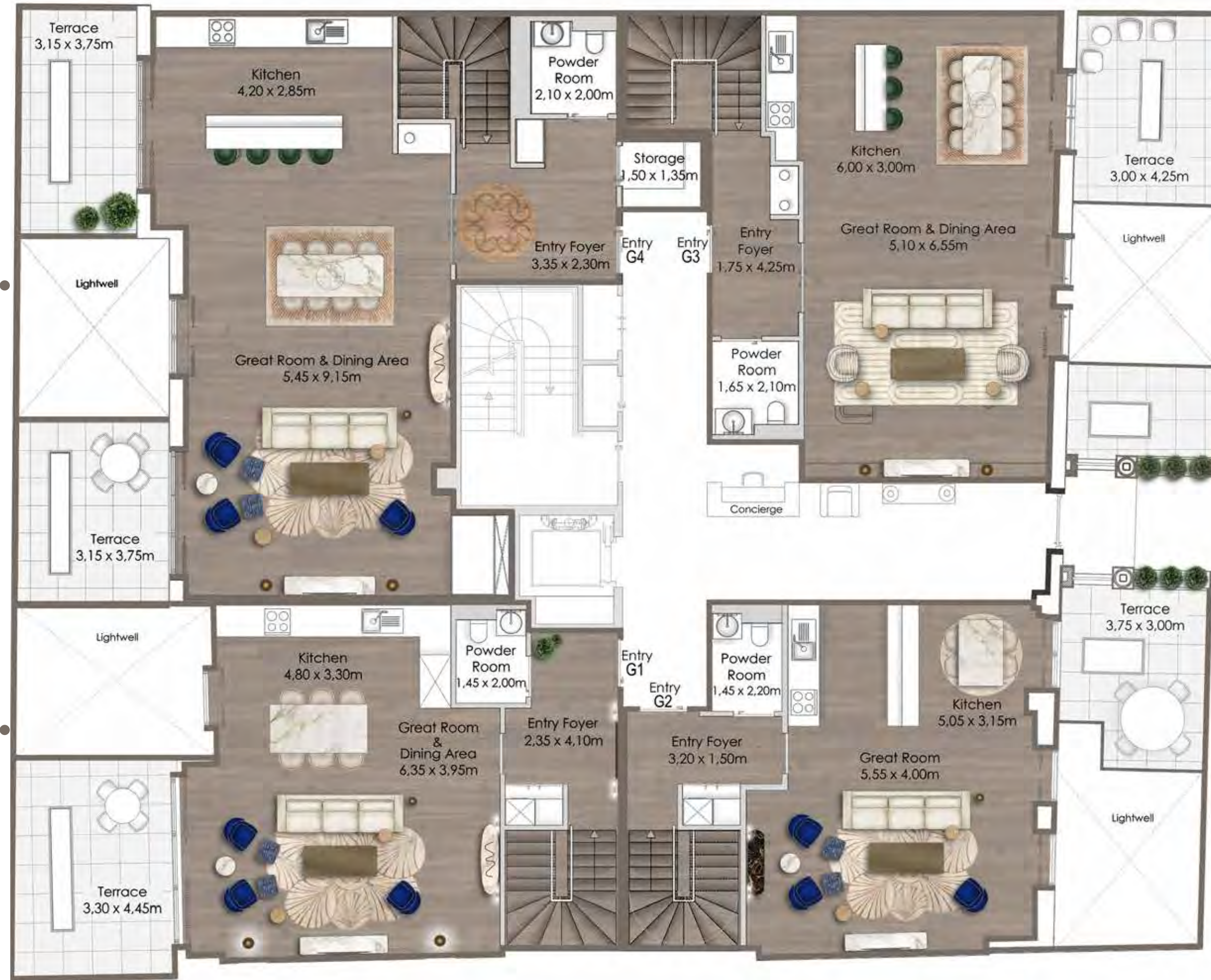
4 APARTMENTS

APARTMENT G04
3 Bedrooms
Duplex (Upper Level)

APARTMENT G01
2 Bedrooms
Duplex (Upper Level)

APARTMENT G03
3 Bedrooms
Duplex (Upper Level)

APARTMENT G02
2 Bedrooms
Duplex (Upper Level)



Views towards
Hyde Park



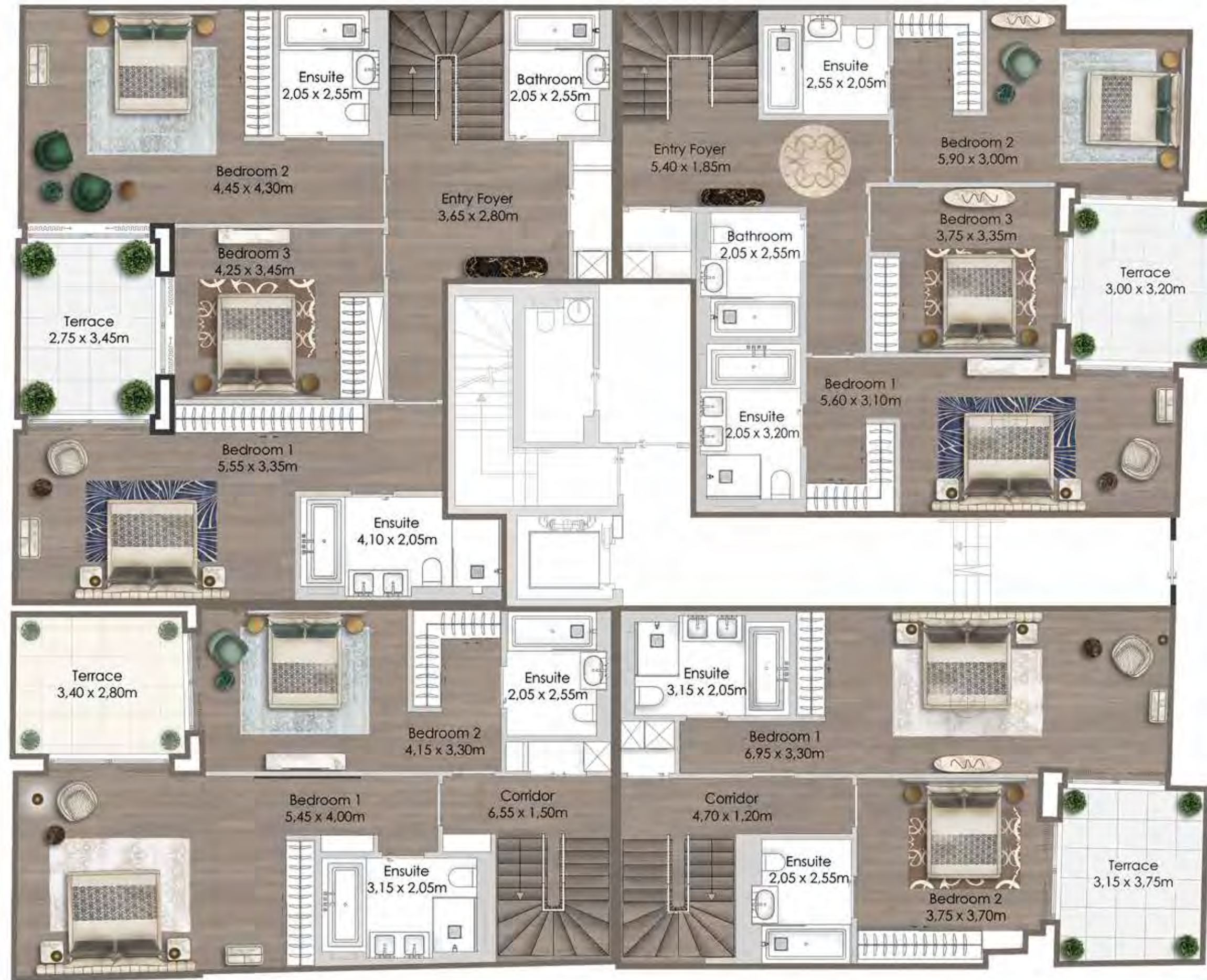
**ELIE SAAB
RESIDENCES**
HYDE PARK

LOWER GROUND FLOOR

4 APARTMENTS

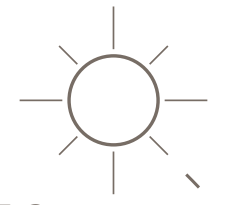
APARTMENT G04
3 Bedrooms
Duplex (Lower Level)

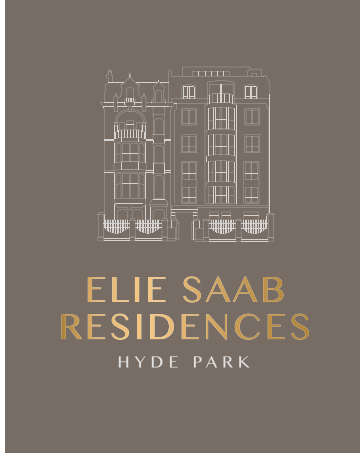
APARTMENT G01
2 Bedrooms
Duplex (Lower Level)



APARTMENT G03
3 Bedrooms
Duplex (Lower Level)

APARTMENT G02
2 Bedrooms
Duplex (Lower Level)





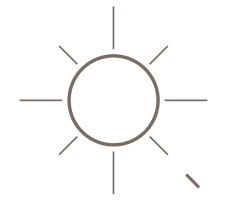
FIRST FLOOR

3 APARTMENTS

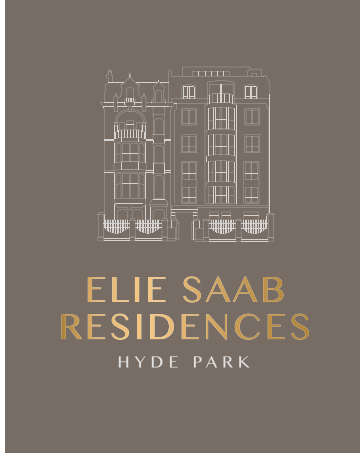
APARTMENT 103
2 Bedrooms

APARTMENT 101
2 Bedrooms

APARTMENT 102
2 Bedrooms



Views towards
Hyde Park



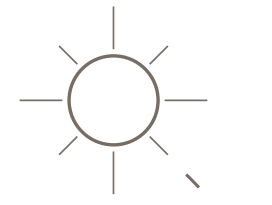
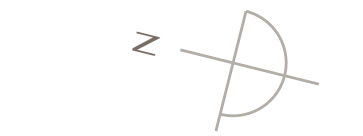
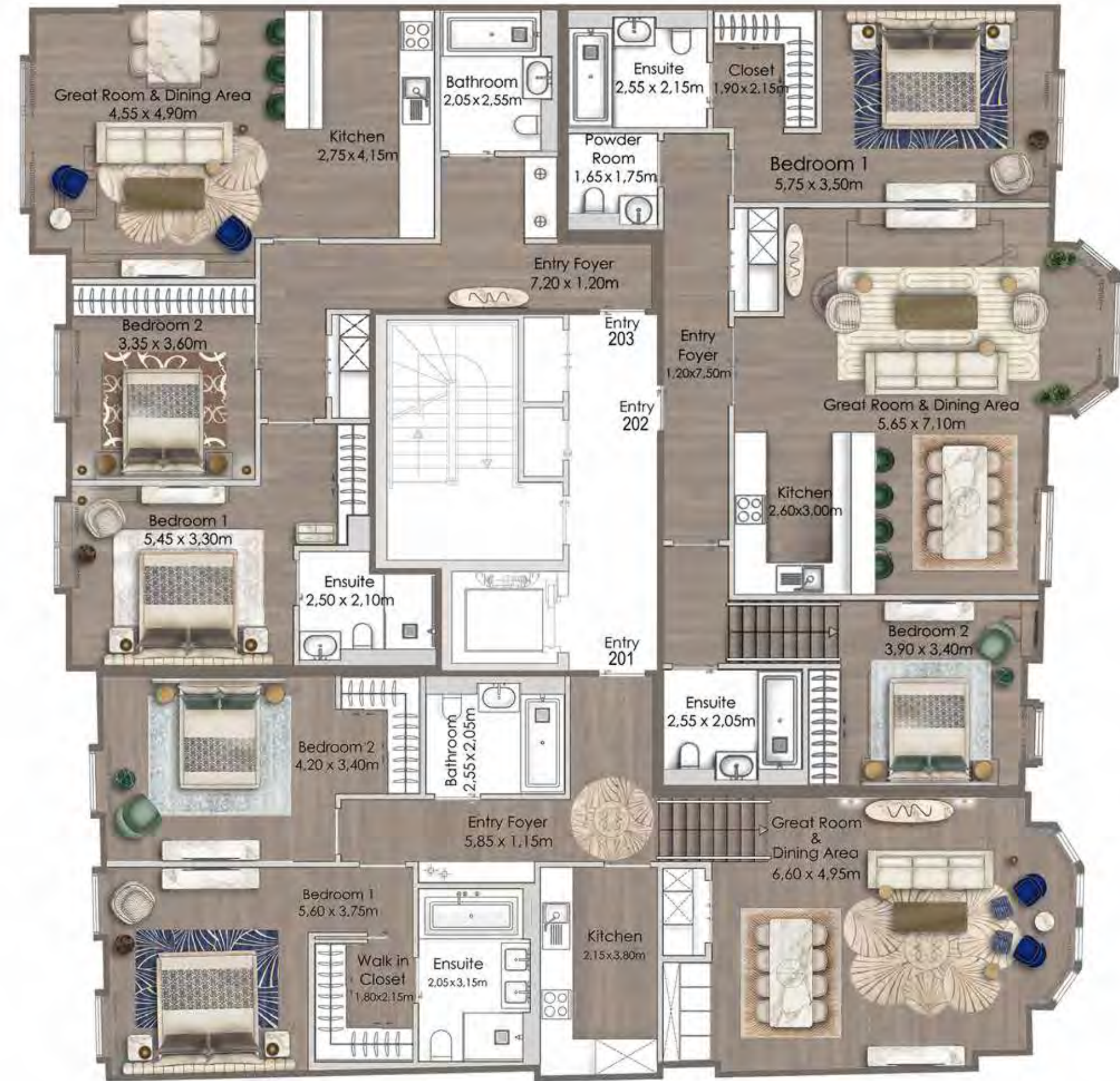
SECOND FLOOR

3 APARTMENTS

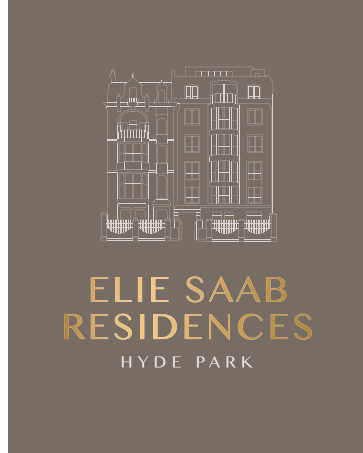
APARTMENT 203
2 Bedrooms

APARTMENT 201
2 Bedrooms

APARTMENT 202
2 Bedrooms



Views towards
Hyde Park

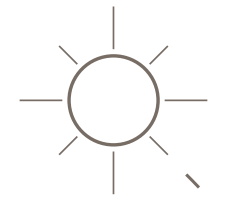


THIRD FLOOR

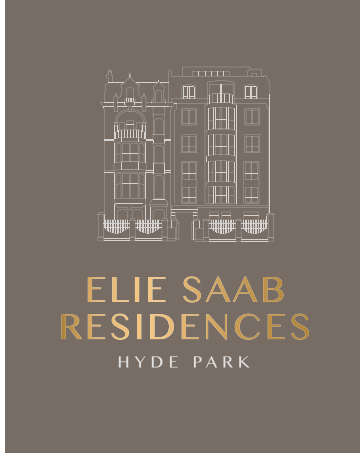
2 APARTMENTS

APARTMENT 301
3 Bedrooms

APARTMENT 302
1 Bedrooms



Views towards
Hyde Park

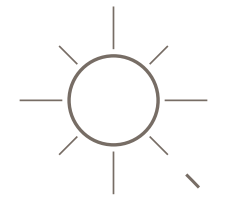


FOURTH FLOOR

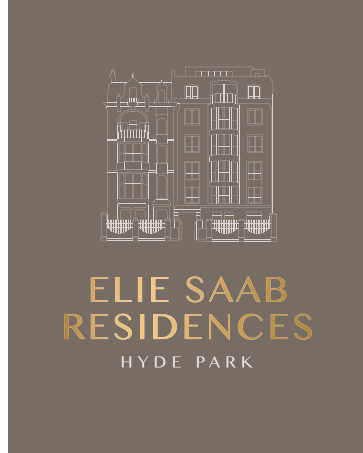
2 APARTMENTS

APARTMENT 402
3 Bedrooms

APARTMENT 401
3 Bedrooms
Duplex (Lower Level)



Views towards
Hyde Park

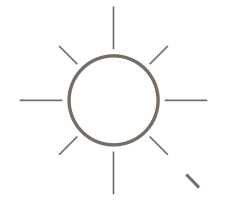
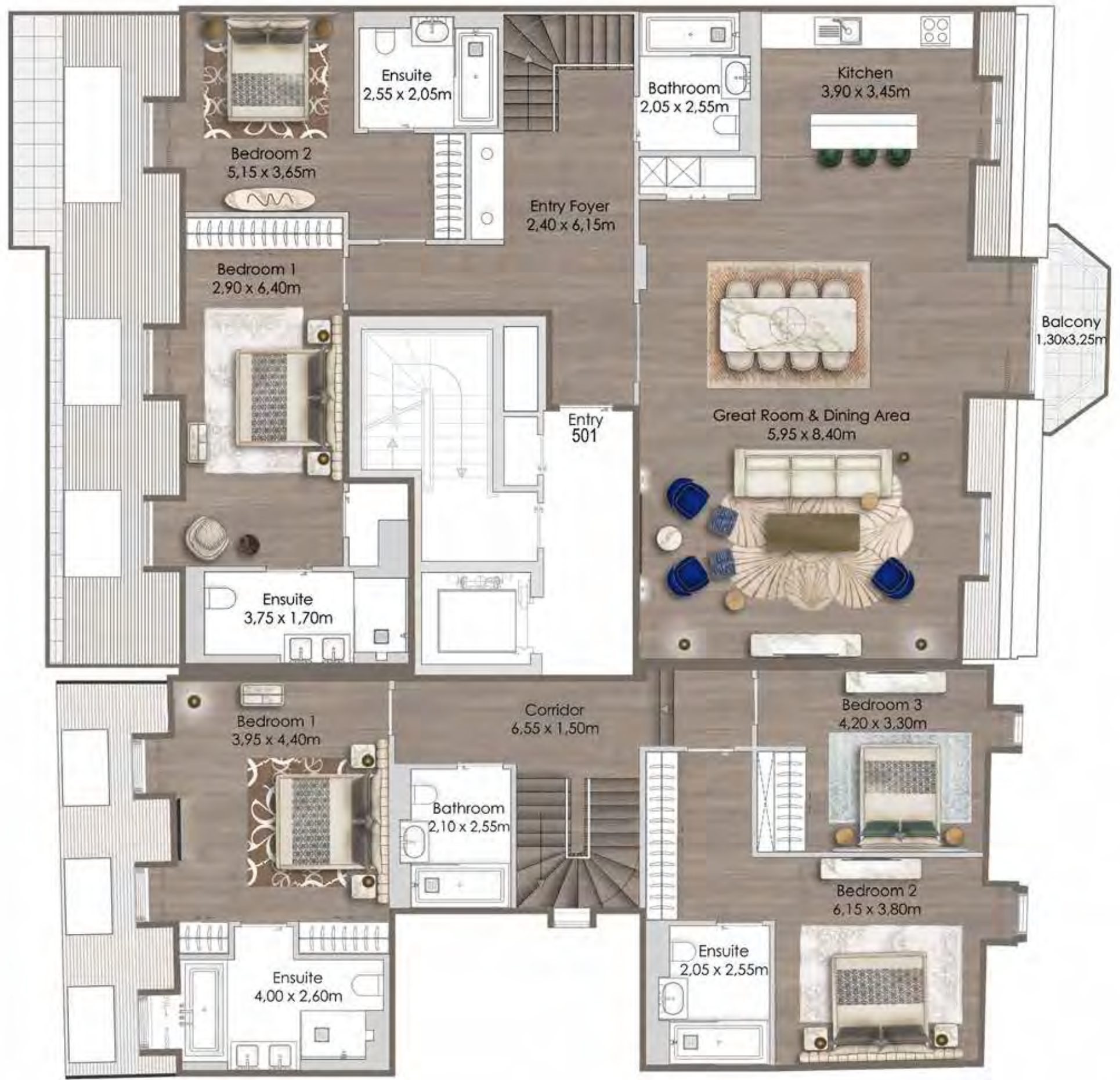


FIFTH FLOOR

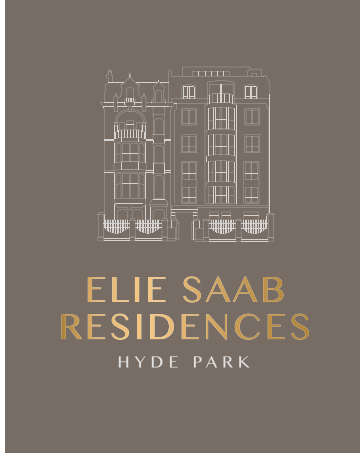
2 APARTMENTS PENTHOUSE FLOOR

APARTMENT 501
3 Bedrooms
Duplex Penthouse
(Lower Level)

APARTMENT 401
3 Bedrooms
Duplex (Upper Level)



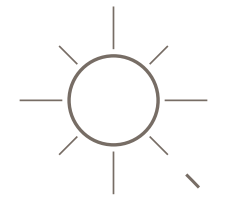
Views towards
Hyde Park



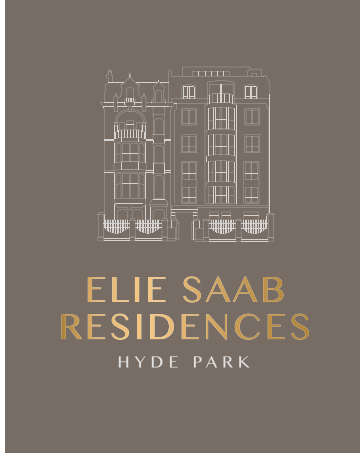
SIXTH FLOOR

1 APARTMENT PENTHOUSE FLOOR

APARTMENT 501
3 Bedrooms
Duplex Penthouse
(Upper Level)



Views towards
Hyde Park



SKYLIGHT VIEW RESIDENCES

APARTMENT G01
2 BEDROOMS

Total Area: 132 sq m | 1 419 sq ft
Terrace LGF: 9.52 sq m | 102.47 sq ft
Terrace GF: 14.6 sq m | 157.15 sq ft

2 | 2 | 1 |



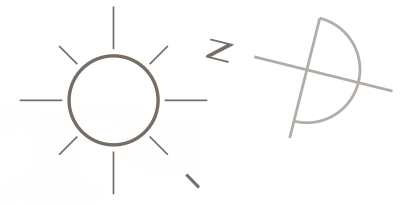
KEY PLAN



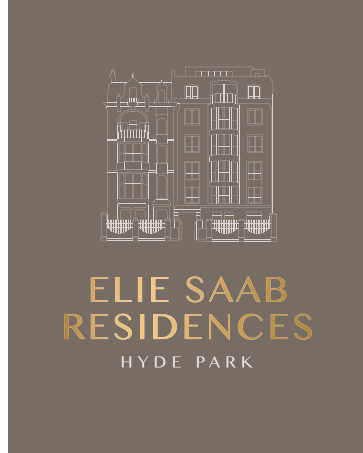
DUPLEX
LOWER GROUND FLOOR



DUPLEX
GROUND FLOOR



Entry



SKYLIGHT VIEW RESIDENCES

APARTMENT G02
2 BEDROOMS

Total Area: 118 sq m | 1 274 sq ft
Terrace LGF: 11.81 sq m | 127.12 sq ft
Terrace GF: 11.25 sq m | 121.09 sq ft

2 | 2 | 1 |



KEY PLAN



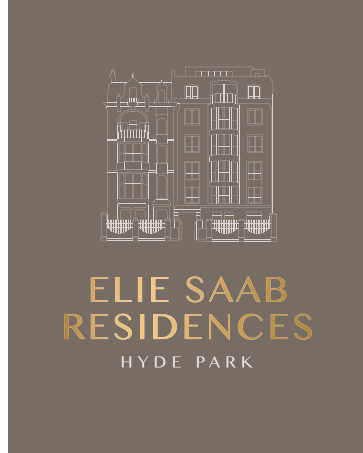
DUPLEX
LOWER GROUND FLOOR



DUPLEX
GROUND FLOOR



Views towards
Hyde Park



SKYLIGHT VIEW RESIDENCES

APARTMENT G03 3 BEDROOMS

Total Area: 164 sq m | 1 769 sq ft
 Terrace LGF: 9.6 sq m | 103.33 sq ft
 Terrace GF: 12.75 sq m | 137.24 sq ft

3 | | 3 | | 1 |



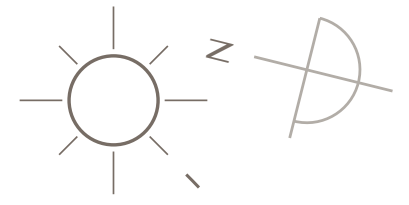
KEY PLAN



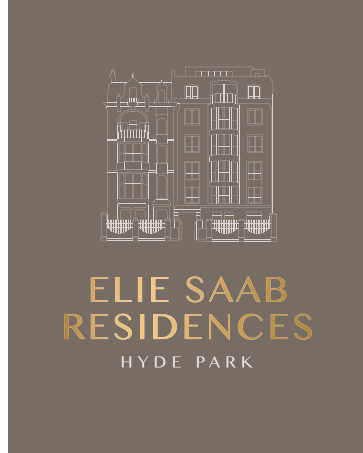
DUPLEX
LOWER GROUND FLOOR



DUPLEX
GROUND FLOOR



Views towards
Hyde Park

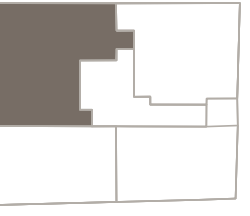


SKYLIGHT VIEW RESIDENCES

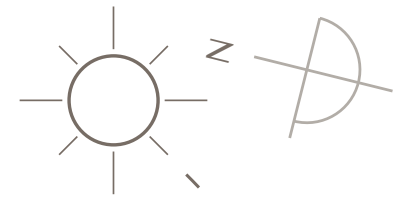
APARTMENT G04 3 BEDROOMS

Total Area: 198 sq m | 2 135 sq ft
 Terrace LGF: 9.48 sq m | 102.04 sq ft
 Terrace GF1: 11.62 sq m | 125.07 sq ft
 Terrace GF2: 11.62 sq m | 125.07 sq ft

3 | 3 | 1 |



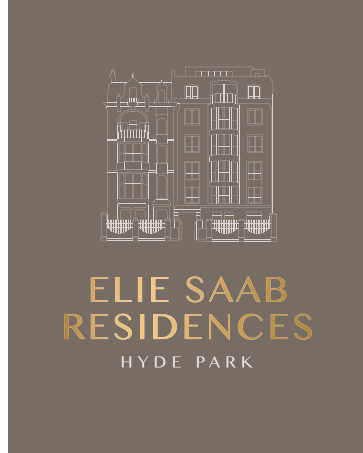
KEY PLAN



DUPLEX LOWER GROUND FLOOR



DUPLEX GROUND FLOOR



APARTMENT 101

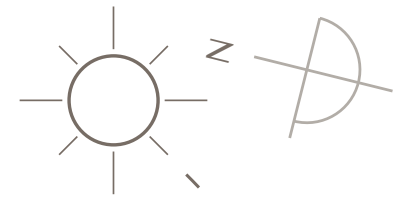
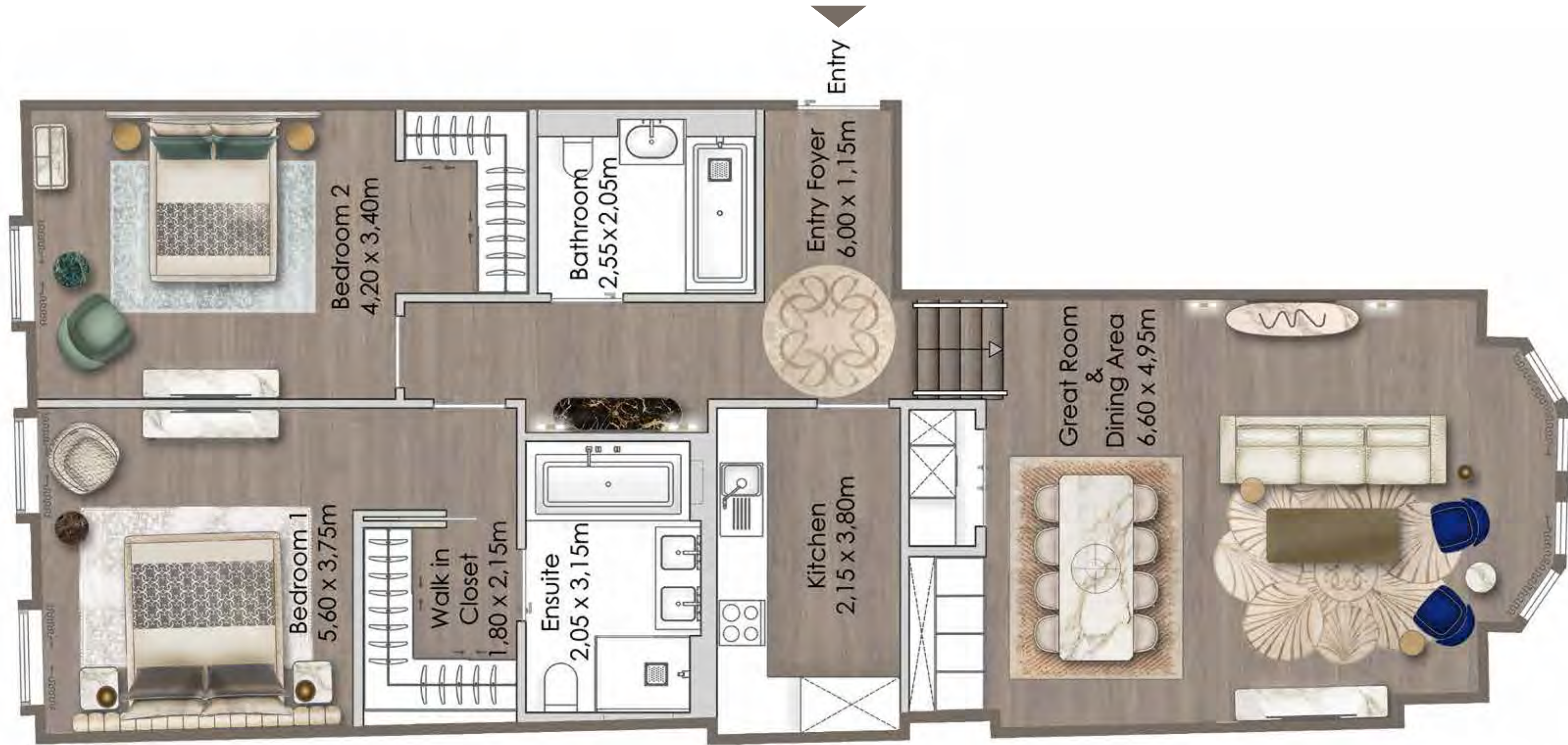
2 BEDROOMS

Total Area: 108 sq m | 1 167 sq ft

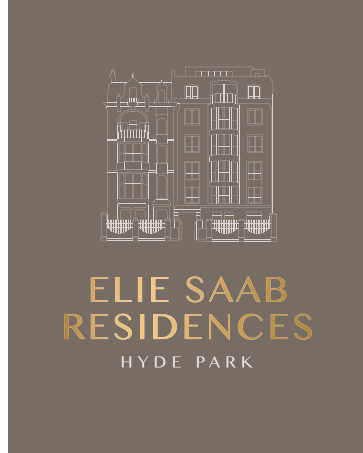
2 | | 2 |



KEY PLAN



Views towards Hyde Park

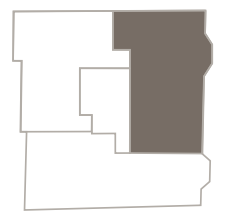


APARTMENT 102

2 BEDROOMS

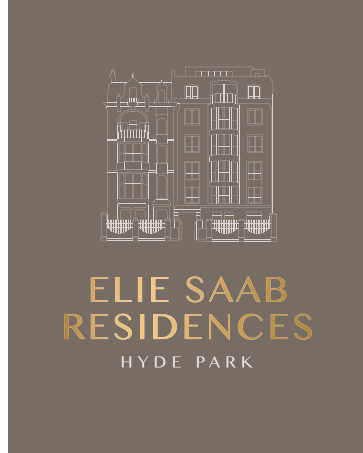
Total Area: 110 sq m | 1 184 sq ft

2 | 2 | 1 |



KEY PLAN

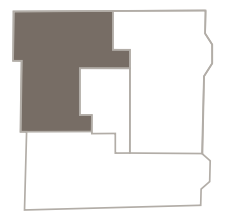
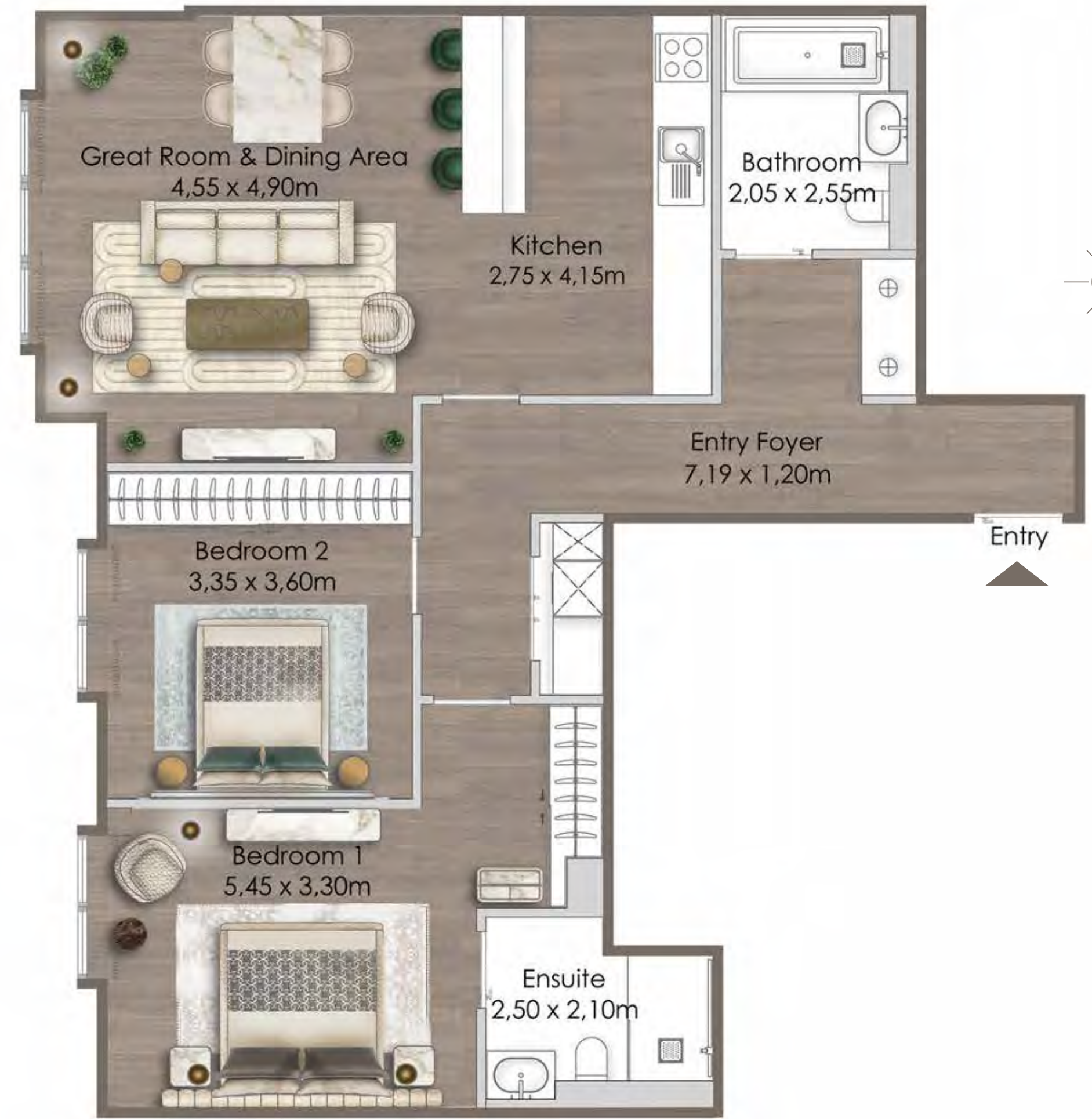




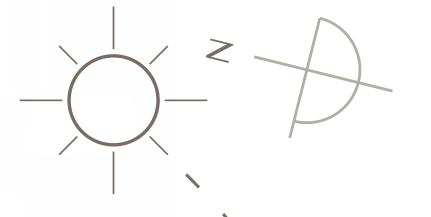
APARTMENT 103

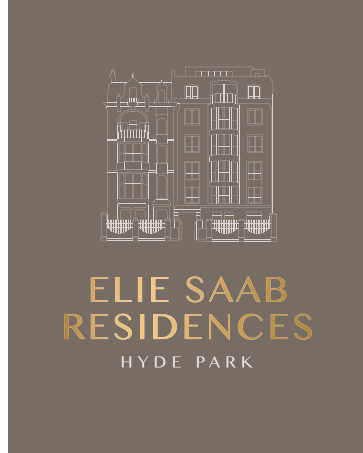
2 BEDROOMS

Total Area: 93 sq m | 996 sq ft



KEY PLAN





APARTMENT 201

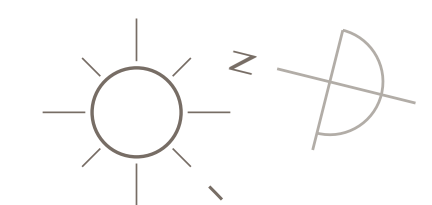
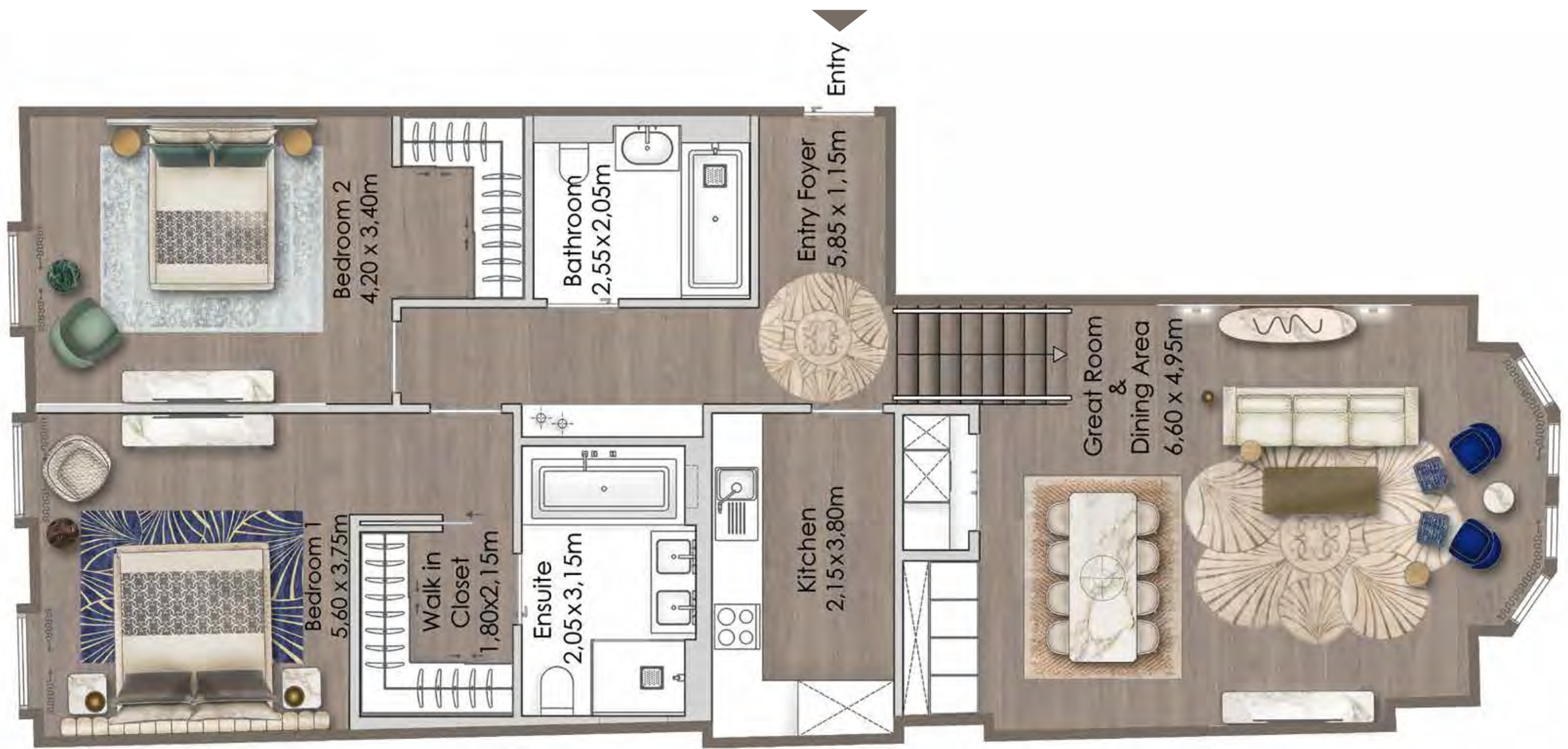
2 BEDROOMS

Total Area: 108 sq m | 1 165 sq ft

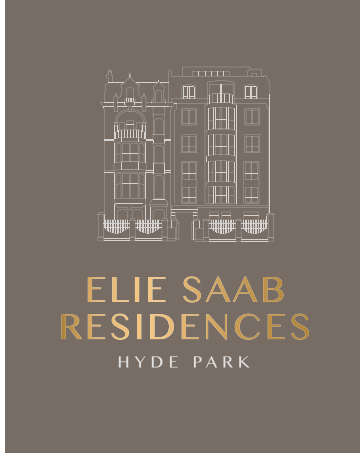
2 | | 2 |



KEY PLAN



Views towards Hyde Park



APARTMENT 202

2 BEDROOMS

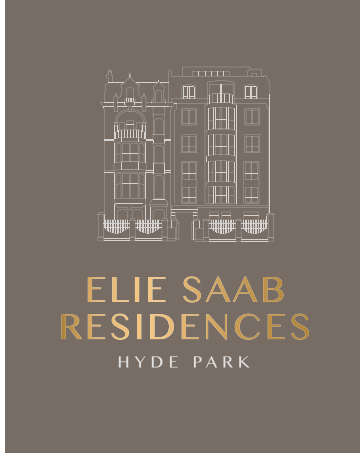
Total Area: 111 sq m | 1 195 sq ft

2 | 2 | 1 |



KEY PLAN

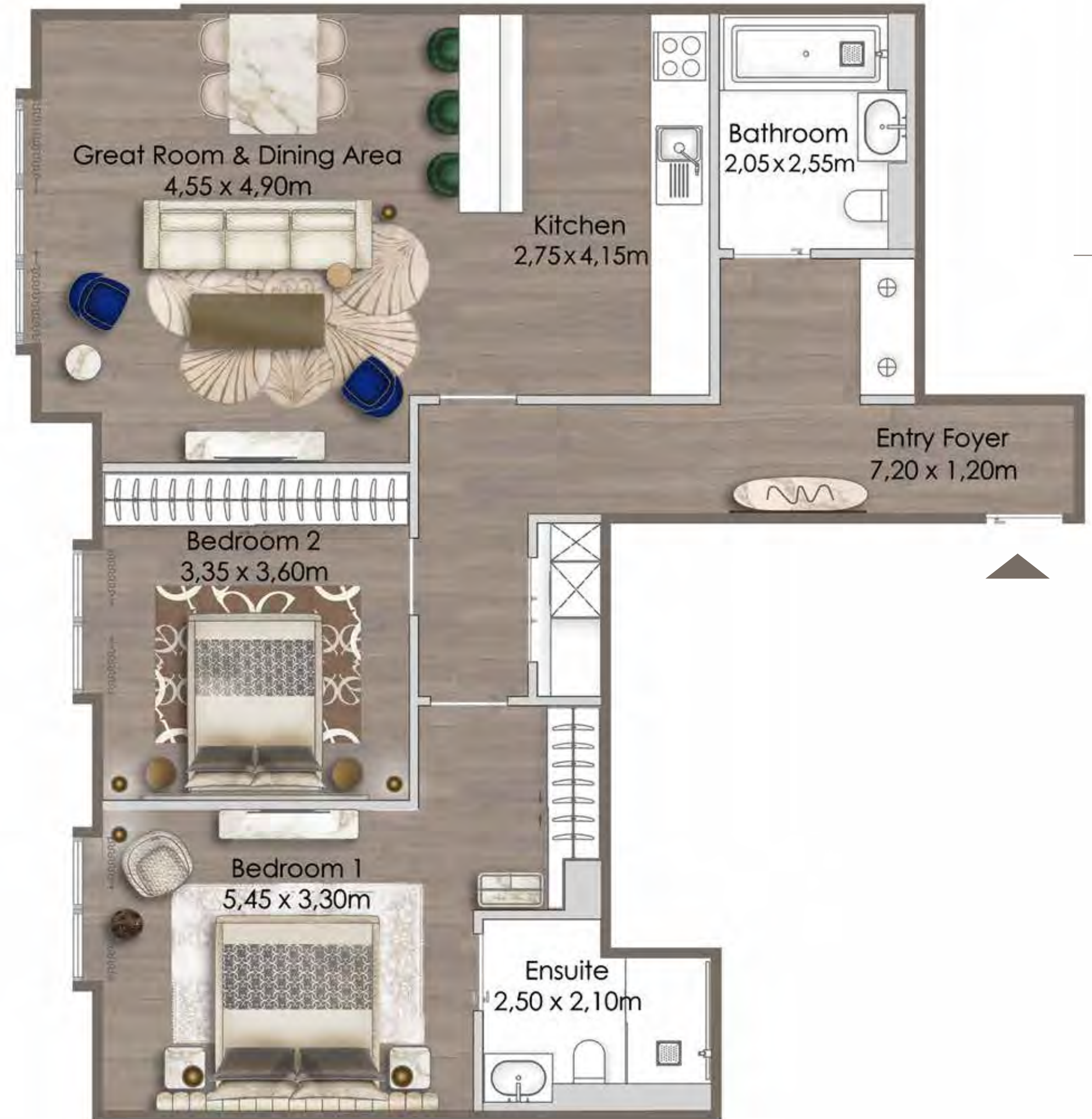




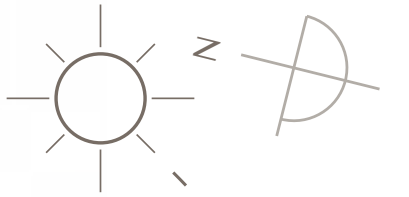
APARTMENT 203

2 BEDROOMS

Total Area: 93 sq m | 996 sq ft



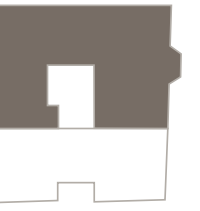
KEY PLAN





**ELIE SAAB
RESIDENCES**
HYDE PARK

SIGNATURE RESIDENCES

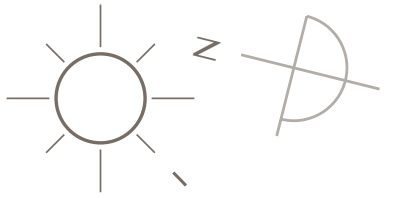
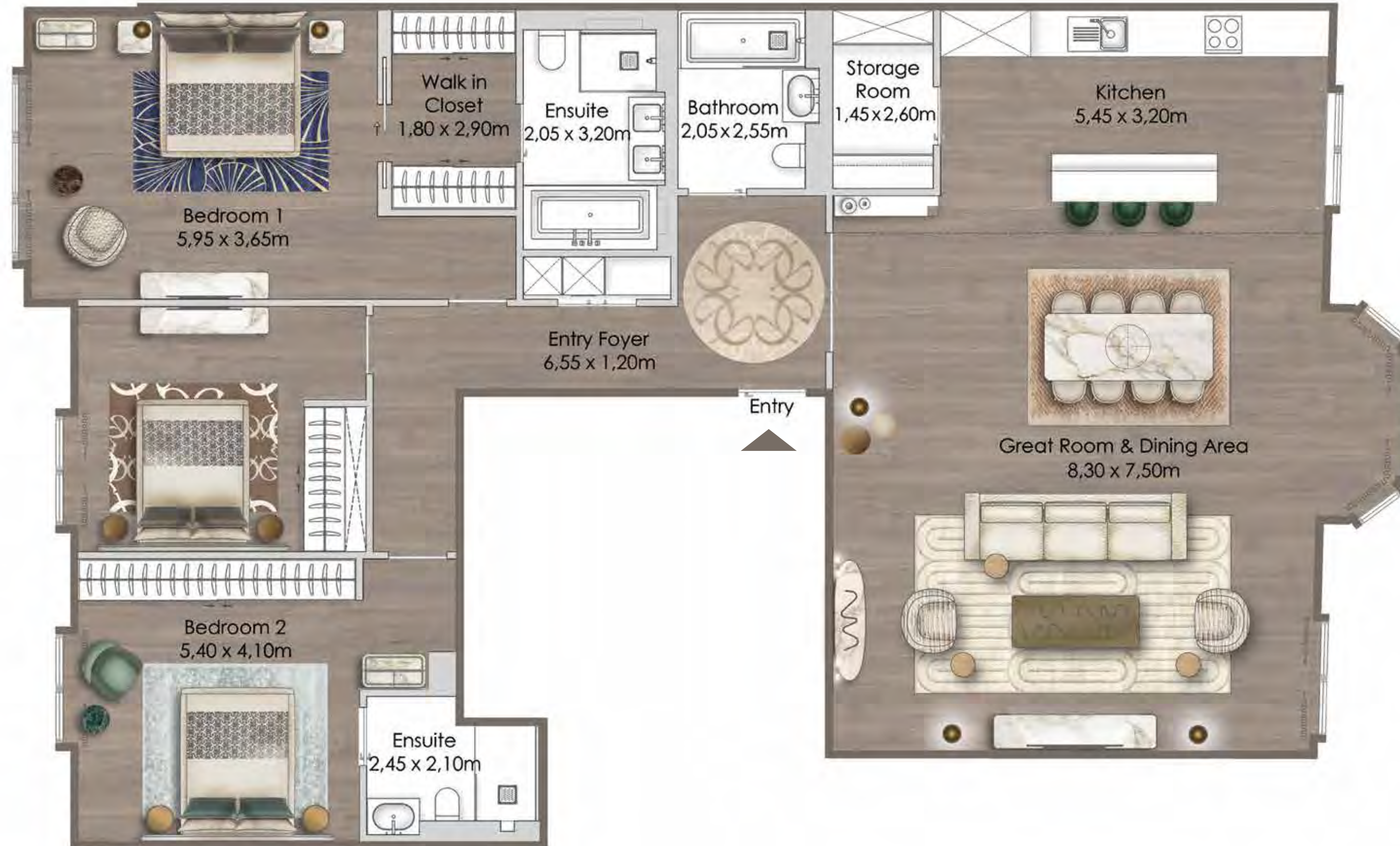


KEY PLAN

APARTMENT 301

3 BEDROOMS + STORAGE

Total Area: 181 sq m | 1 946 sq ft

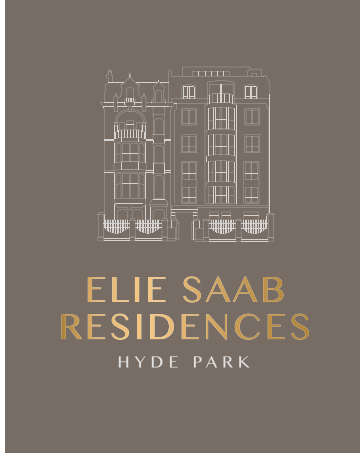


Views towards
Hyde Park

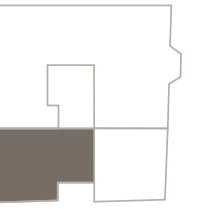
OCTA Properties is the Exclusive Authorized Representative for the UK and Global Sales for ELIE SAAB RESIDENCES

FLOOR PLAN 1. All dimensions are in imperial and metric, and measured from finish to finish excluding construction tolerances. 2. All materials, dimensions, and drawings are approximate only. 3. Information is subject to change without notice, at developer's absolute discretion. 4. Actual area may vary from the stated area. 5. Drawings not to scale. 6. All images used are for illustrative purposes only and do not represent the actual size, features, specifications, fittings, and furnishings. 7. The developer reserves the right to make revisions / alterations, at it's absolute discretion, without any liability whatsoever.

ELIE SAAB x GII



SIGNATURE RESIDENCES

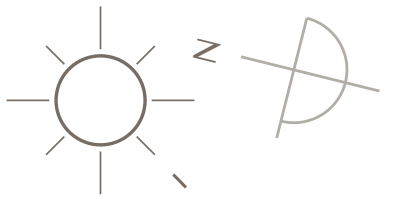
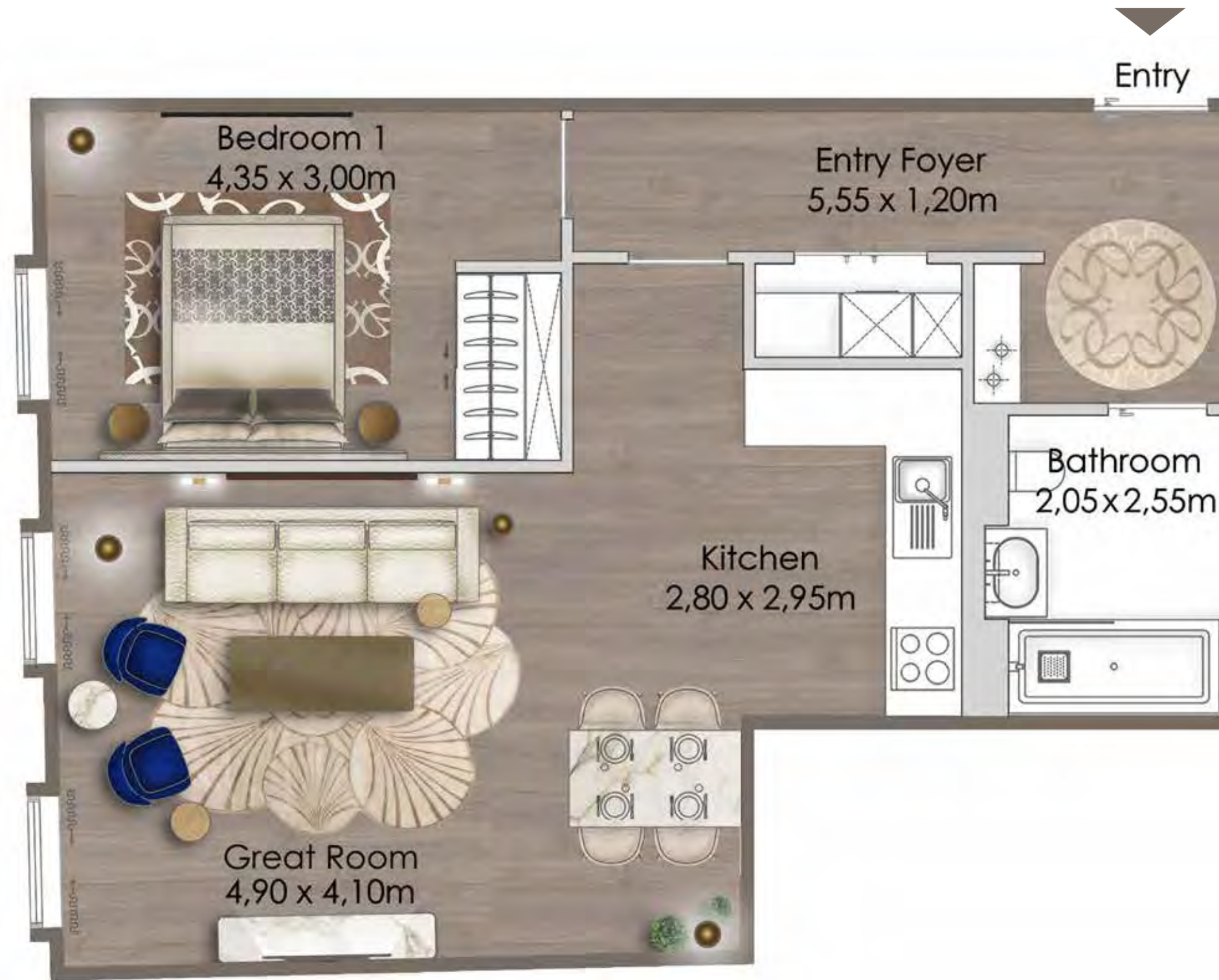


KEY PLAN

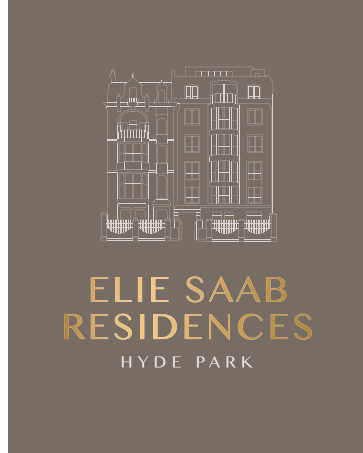
APARTMENT 302

1 BEDROOM

Total Area: 64 sq m | 686 sq ft



Views towards Hyde Park



SIGNATURE RESIDENCES

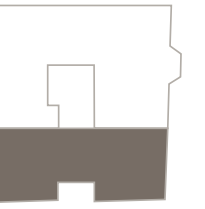
3 BEDROOM DUPLEX

APARTMENT 401

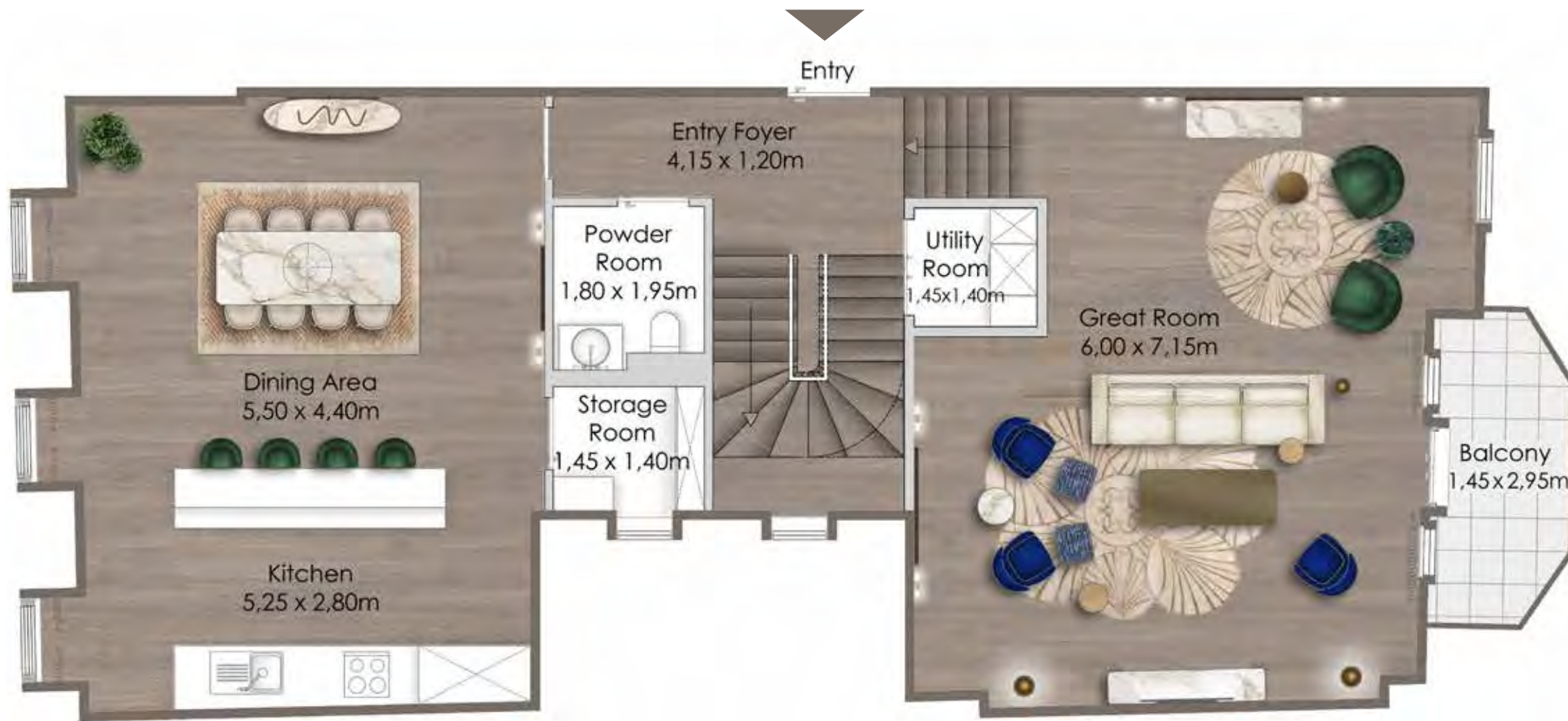
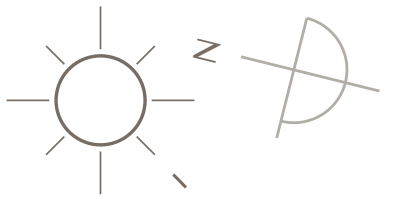
3 BEDROOMS + STORAGE
DUPLEX WITH BALCONY

Total Area: 196 sq m | 2 106 sq ft
Balcony Level 4: 4.27 sq m | 46 sq ft

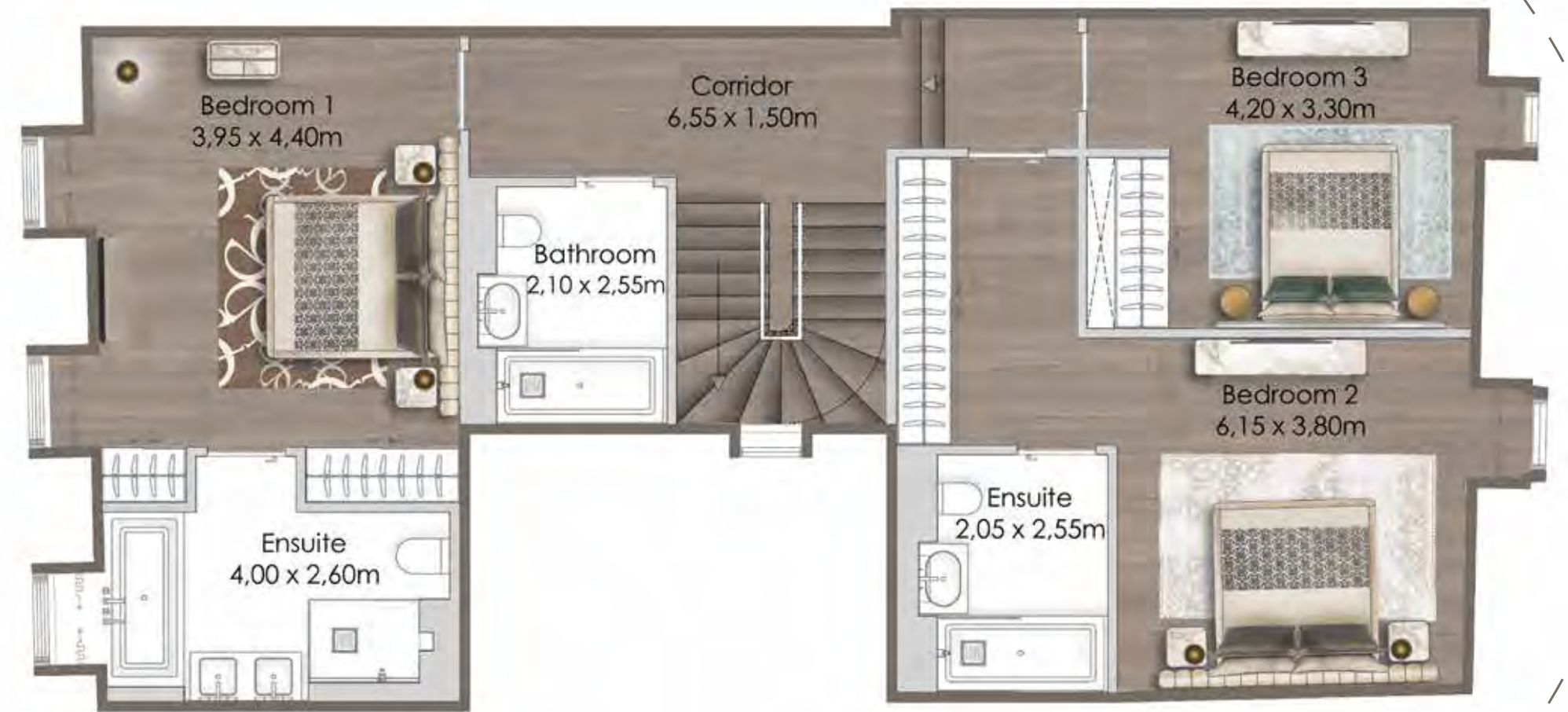
3 | | 3 | | 1 |



KEY PLAN



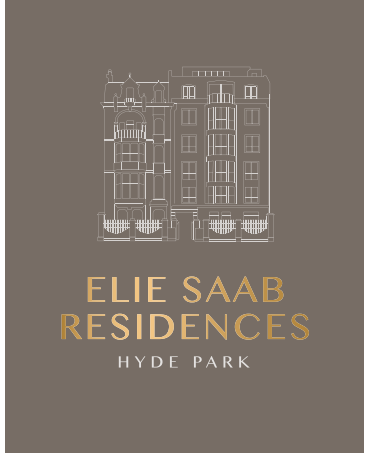
LEVEL 4



LEVEL 5

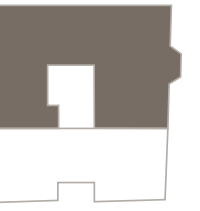


Views towards Hyde Park



SIGNATURE RESIDENCES

3 BEDROOM DUPLEX

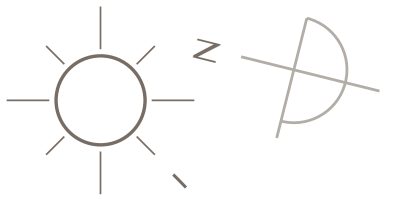


KEY PLAN

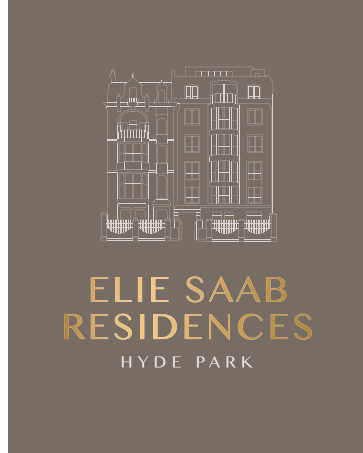
APARTMENT 402

3 BEDROOMS + STORAGE
DUPLEX WITH BALCONY

Total Area: 172 sq m | 1 852 sq ft
Balcony: 4.43 sq m | 47.68 sq ft



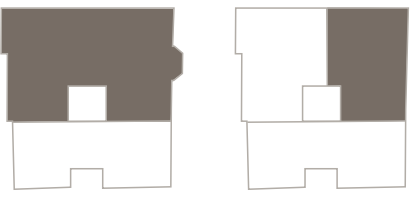
Views towards
Hyde Park



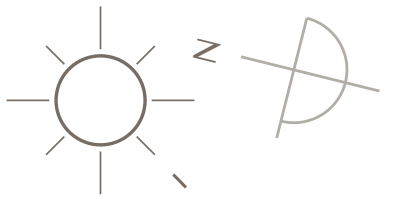
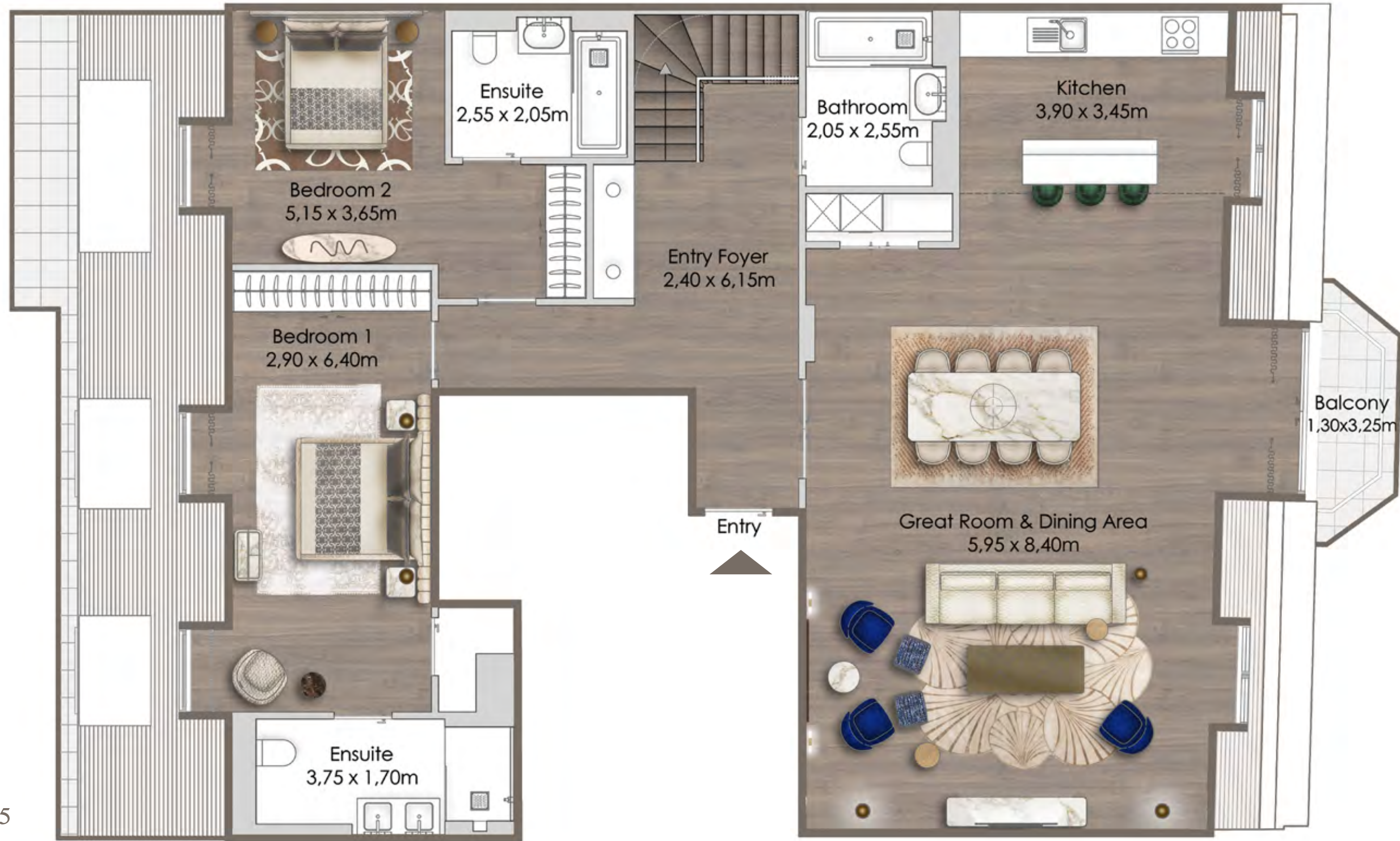
SIGNATURE PENTHOUSE

APARTMENT 501
3 BEDROOMS
DUPLEX PENTHOUSE

Total Area: 181 sq m | 1 952 sq ft
Balcony Level 5: 4.3 sq m | 4.28 sq ft
Terrace Level 6: 34.51 sq m | 371.5 sq ft



KEY PLAN



Views towards Hyde Park

C O N T A C T
US

Phone: +971 4 425 2780

WhatsApp: +971 50 394 4914

Email:

info@christiesrealestatedubai.com

**ELIE SAAB RESIDENCES
ELIE SAAB X GII**