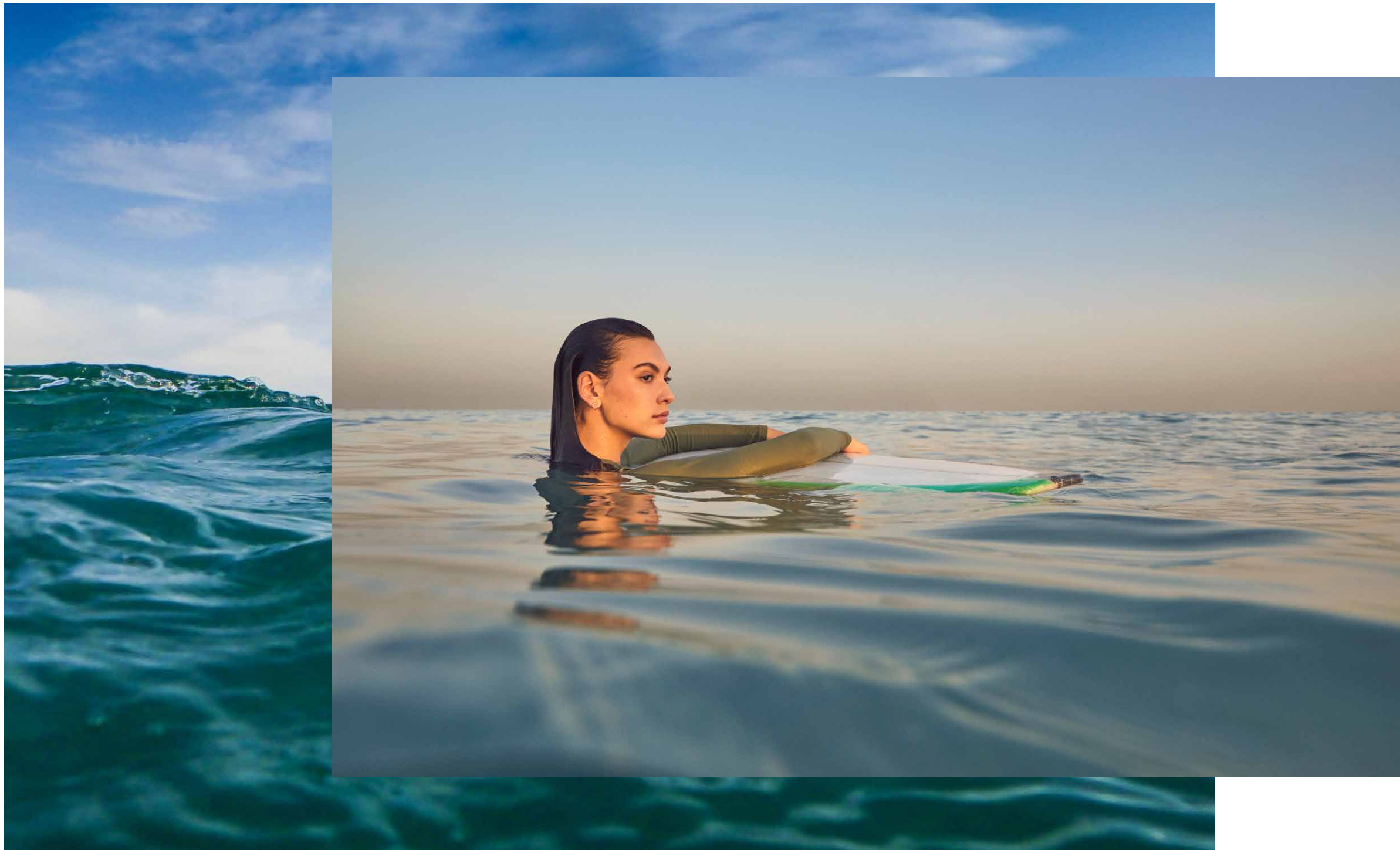


CHRISTIE'S  
INTERNATIONAL REAL ESTATE

 PREMIER ESTATES  
— REAL ESTATE —

PORT  
*de La*  
MÉR  
LA SIRÈNE

LIVE ON THE HORIZON



The more you live, the more you imagine...

Where endless views of blue will take you.  
Where casual walks down the shore will lead.  
What embracing a true seaside lifestyle will bring.

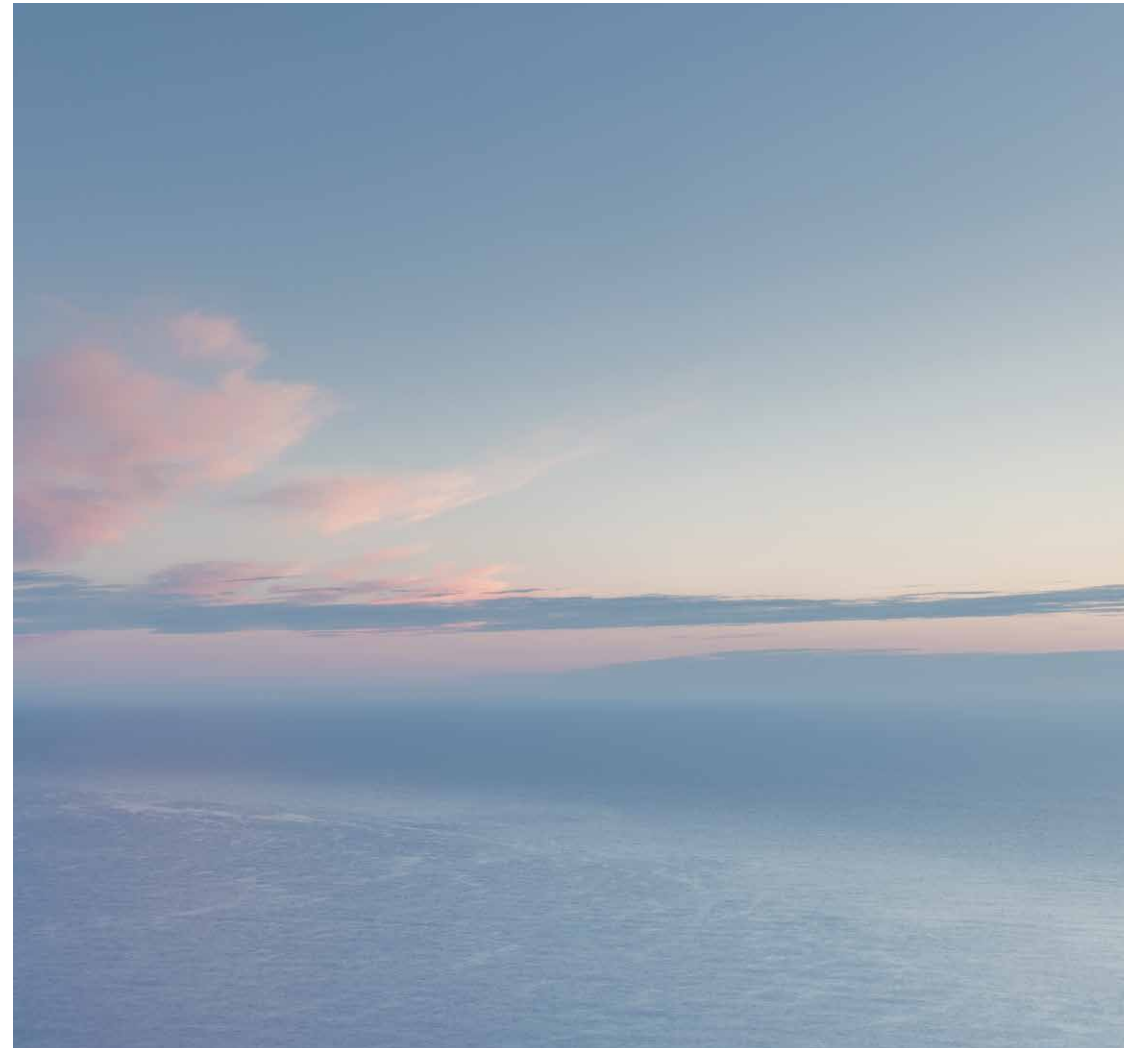
So smile, breathe it all in, and enjoy.

Because there's so much more to life when you...



# LIVE ON THE HORIZON

Settling down in Port de La Mer will change more than just where you live. It will change how you live. The glimmering sea, pristine beach, a buzzing marina within a picturesque community are more than enough to inspire you to get up every morning and ask yourself—what lies on the horizon today?

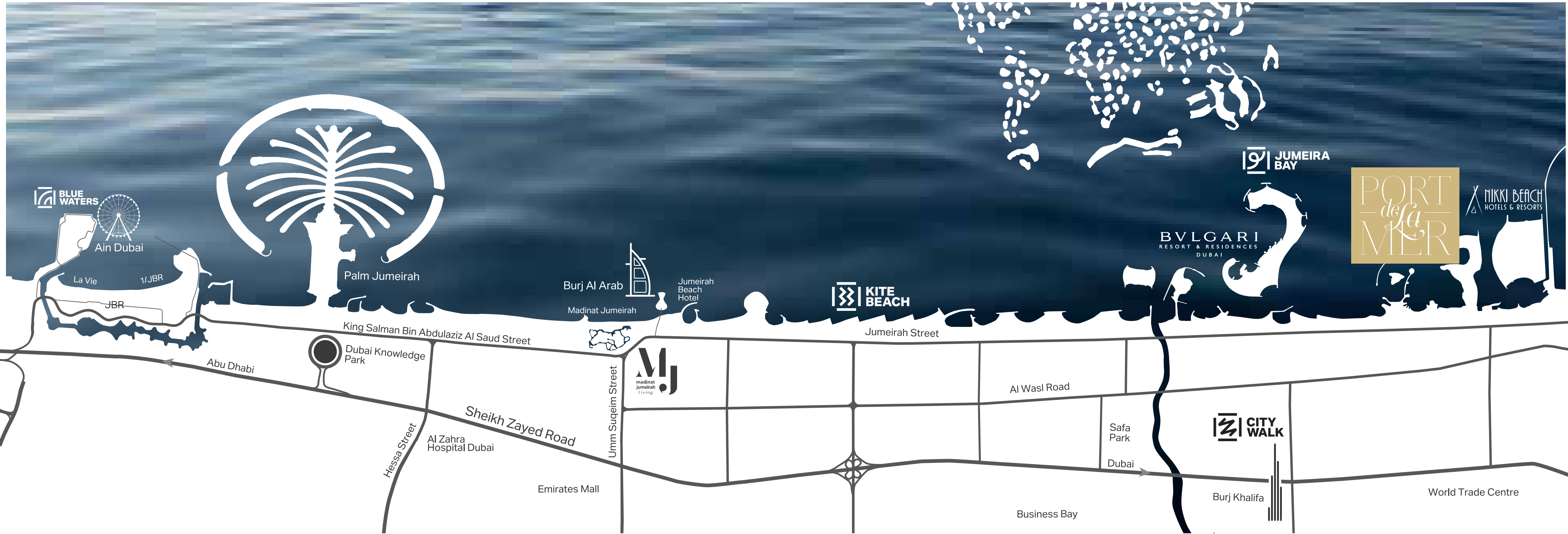






# MERAAS

Our sophisticated design aims to connect diverse personalities who have a vast variety of preferences, at some of Dubai's most sought-after addresses. From luxurious waterfront properties to contemporary family-friendly communities, our residences at iconic locations such as City Walk, Bluewaters, Jumeira Bay, Pearl Jumeira, and La Mer stimulate a creative and cutting-edge culture. Meraas' continuing investment in innovation is ensuring a better, more prosperous future for generations to come.



BLUE WATERS



Ain Dubai

La Vie

1/JBR

JBR



Palm Jumeirah

Burj Al Arab



Jumeirah Beach Hotel

KITE BEACH

JUMEIRA BAY

BVLGARI  
RESORT & RESIDENCES  
DUBAI

PORT  
de la  
MER

NIKKI BEACH  
HOTELS & RESORTS

King Salman Bin Abdulaziz Al Saud Street

Jumeirah Street

Abu Dhabi

Dubai Knowledge Park

Sheikh Zayed Road

Umm Suqeim Street

Al Wasl Road

Hessa Street

Al Zahra Hospital Dubai

Emirates Mall

Safa Park

CITY WALK

Dubai

Business Bay

Burj Khalifa

World Trade Centre



# LA MER

Set within the prestigious Jumeirah 1 district, La Mer is an inspirational beachfront destination. With fresh contemporary design, it boasts premium dining, shopping, entertainment, leisure and hospitality experiences along 2.5 kilometres of pristine beaches.

The residential communities here benefit from excellent connectivity to the city's most popular attractions, and easy accessibility to Dubai's international airports.





# CONNECTIVITY

Port de La Mer is easily accessible from all major road links. Located within La Mer and only minutes away from City Walk, this seaside destination has everything one could desire within close vicinity. Dubai International Airport is only a short drive away, and for those who enjoy the glitz and glamour of the city, shopping, leisure and dining experiences are also at your doorstep.



5 minutes  
to La Mer



15 minutes  
to Dubai International Airport



10 minutes  
to Downtown Dubai



45 minutes  
to Al Maktoum International Airport



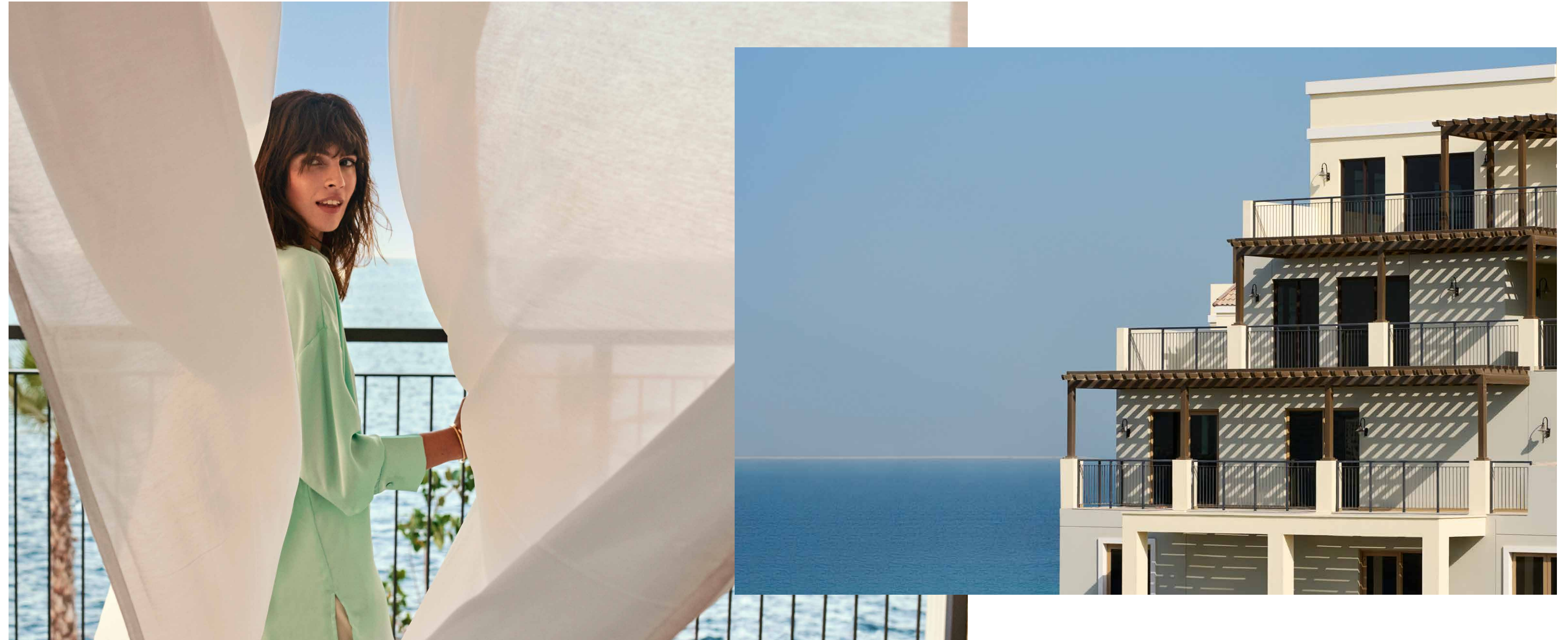
10 minutes  
to City Walk





# PORT DE LA MER

Inspired by the charm of the Mediterranean, Port de La Mer offers panoramic views of the open water and Dubai skyline. The residences blend vintage architecture and contemporary interior design while being surrounded by coastal waters, offering a vibrant yet laid-back seaside life.





# AMENITIES

Port de La Mer boasts premium amenities in stunning settings. Its bridges connect the different spaces together, from bustling piazzas to its inviting open spaces, all of which surround its central podium. Restaurants, hotels, and retail outlets along the waterfront further infuse energy and vitality into life at Port de La Mer. Visitors and residents here can indulge in:



190+ Berth Marina and Yacht Club



5-Star Hospitality Experiences



Magnificent Swimming Pools



Seaside and Marina Promenades



Private Landscaped Terraces



Cafés and Restaurants



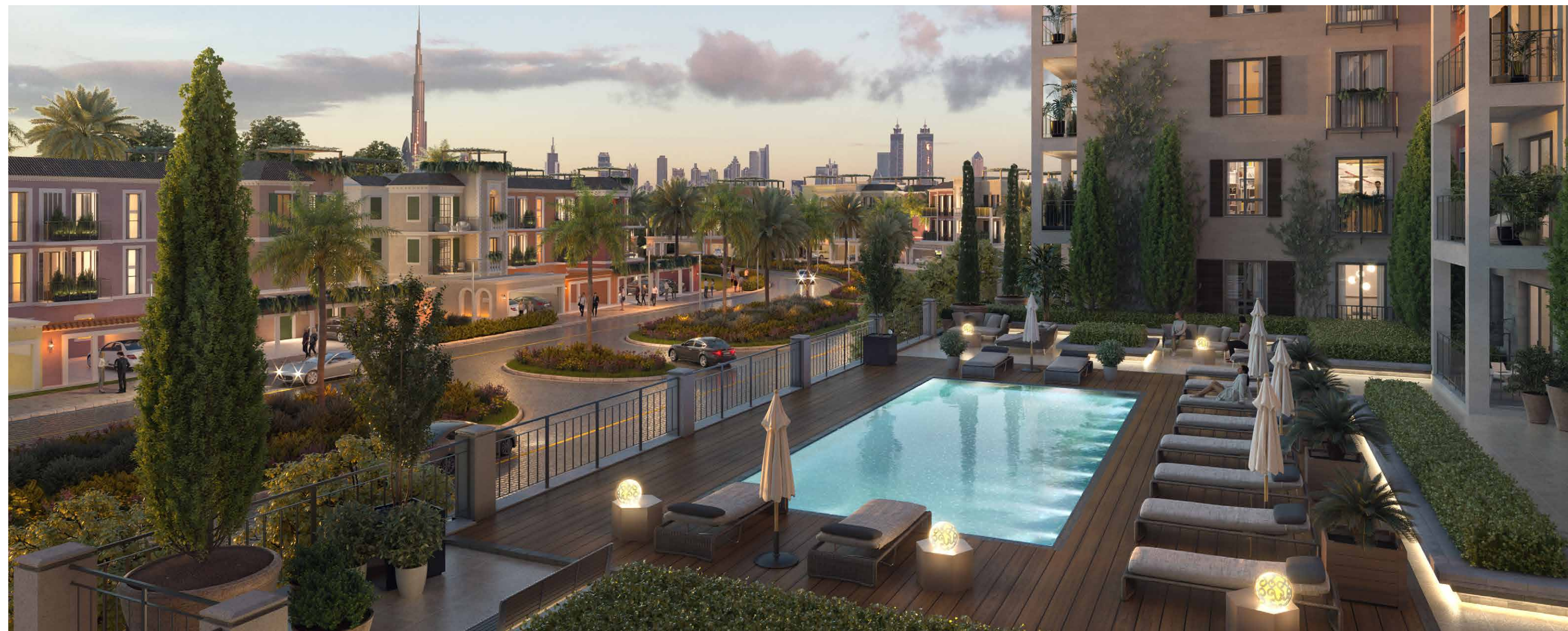
Beach Access



Private Facilities and Amenities







# LA SIRÈNE

Live on the edge of Dubai's pristine coastline, embrace a Mediterranean-inspired seaside lifestyle and discover there's so much more to life when you keep looking towards the horizon.

The latest addition to Port de La Mer, La Sirène, comprises an exclusive selection of 1, 2 and 3-bedroom apartments, offering views unlike any other. Savour open seas, beaches, boardwalks, cafés—the more you discover, the more you can imagine and appreciate the endless possibilities of living in La Sirène at Port de La Mer.



**CHARMING WALKWAYS  
CONNECTING  
THE COMMUNITY**







**PREMIUM AMENITIES  
IN STUNNING SETTINGS  
BY THE SEA**

**UNIQUE MARINA PROMENADE  
AND EASY-GOING LIFESTYLE**







**MEDITERRANEAN-INSPIRED  
ARCHITECTURE**

**A ONE-OF-A-KIND ISLAND  
RETREAT WITHIN  
THE CITY**







**WATERFRONT DINING EXPERIENCES  
AT YOUR DOORSTEP**



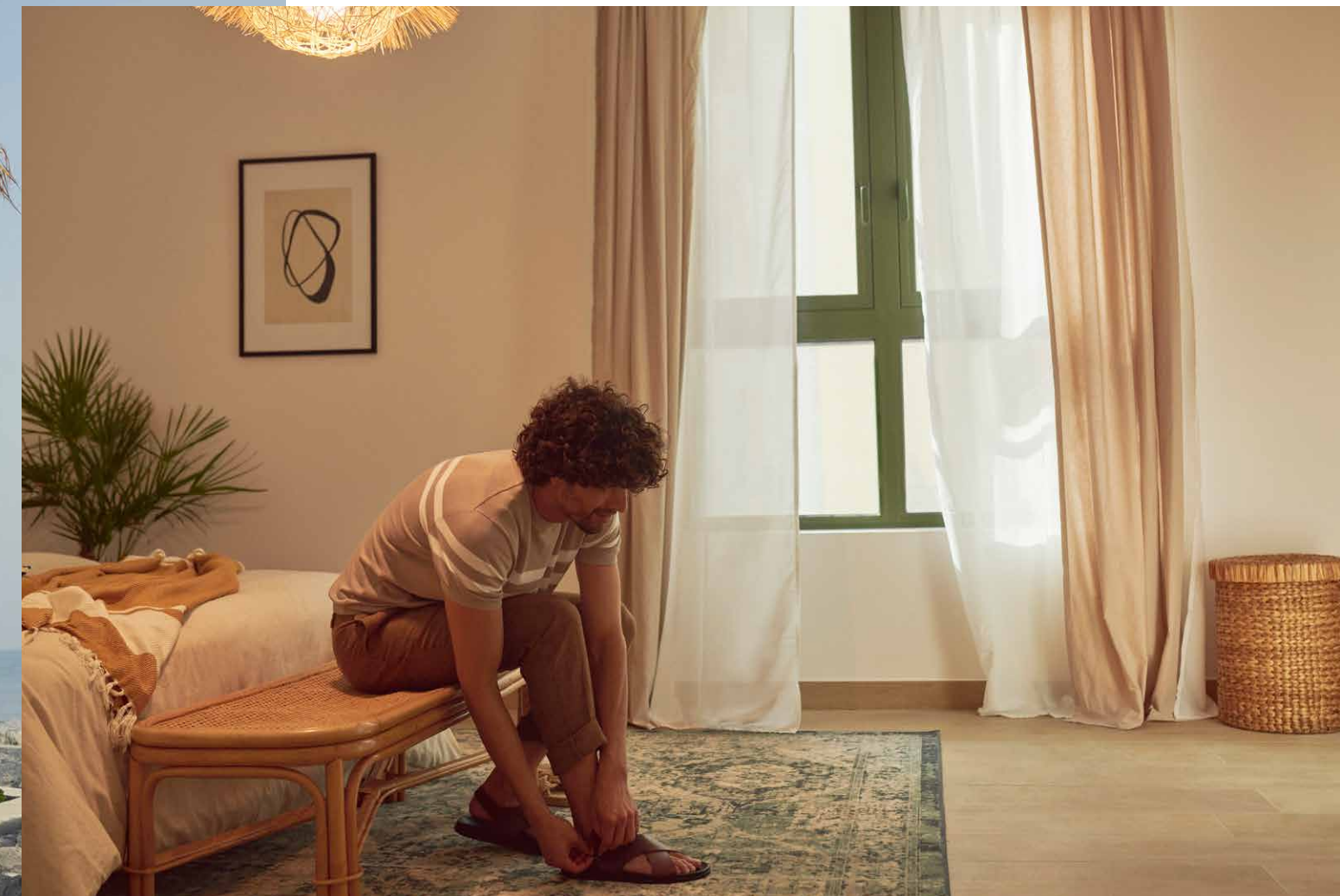
**MAJESTIC FINISHES WITH  
ATTENTION TO DETAIL**



**ACTIVE LIFESTYLE IN A  
SPECTACULAR SEASIDE  
SETTING**



**FLOWING INTERIOR  
SPACES AND PRIVATE  
QUARTERS**

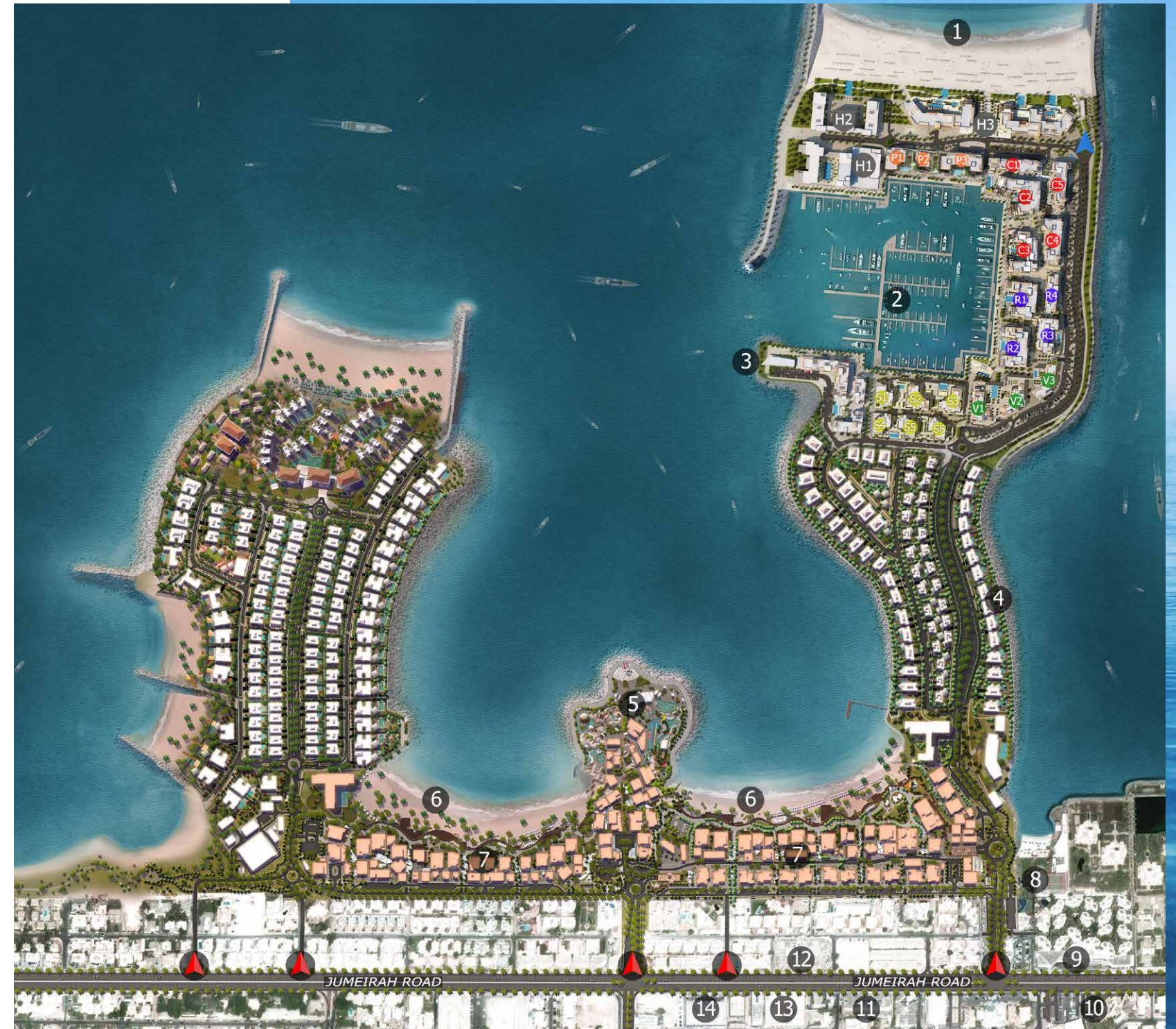




# MASTER PLAN

## LEGEND

- C** LA CÔTE
- R** LA RIVE
- P** LE PONT
- V** LA VOILE
- S** LA SIRÈNE
- H** HOTELS
- ▲** LA MER & PDLM ENTRIES
- ▲** BEACH ACCESS
- 1** BEACH
- 2** MARINA
- 3** YACHT CLUB
- 4** SUR LA MER
- 5** LAGUNA WATER PARK
- 6** LA MER BEACH
- 7** RESTAURANTS & RETAIL
- 8** DUBAI MARINE RESORT
- 9** PALM STRIP MALL
- 10** JUMEIRAH MOSQUE
- 11** JUMEIRAH CENTRE
- 12** THE VILLAGE MALL
- 13** JUMEIRAH PLAZA
- 14** CENTURY PLAZA





CHRISTIE'S  
INTERNATIONAL REAL ESTATE



Christie's International Real Estate - Premier Estates, P03 Building 2, Bay Square, Business Bay

Dubai - UAE, ORN : 11814.

WhatsApp: +971 50 394 4914

Email: [christies@dubaipremierestates.com](mailto:christies@dubaipremierestates.com)

PORT  
*de La*  
MER  
LA SIRÈNE