

The Terraces



Floor Plans

1 Bedroom Flat West Corner



| | | | | | | | | | | |
|---------------|-----------|--------------|-----------------|-----------------|-----------------|-----------------|-----------------|-----------------|-----------------|-----------------|
| Internal Area | 731 Sq Ft | Floor Number | 2 nd | 3 rd | 4 th | 5 th | 6 th | 7 th | 8 th | 9 th |
| External Area | | Unit Number | S 220 | S 320 | S 420 | S 520 | S 620 | S 720 | S 820 | S 920 |
| Total Area | 731 Sq Ft | | | | | | | | | |



Second to ninth Floors

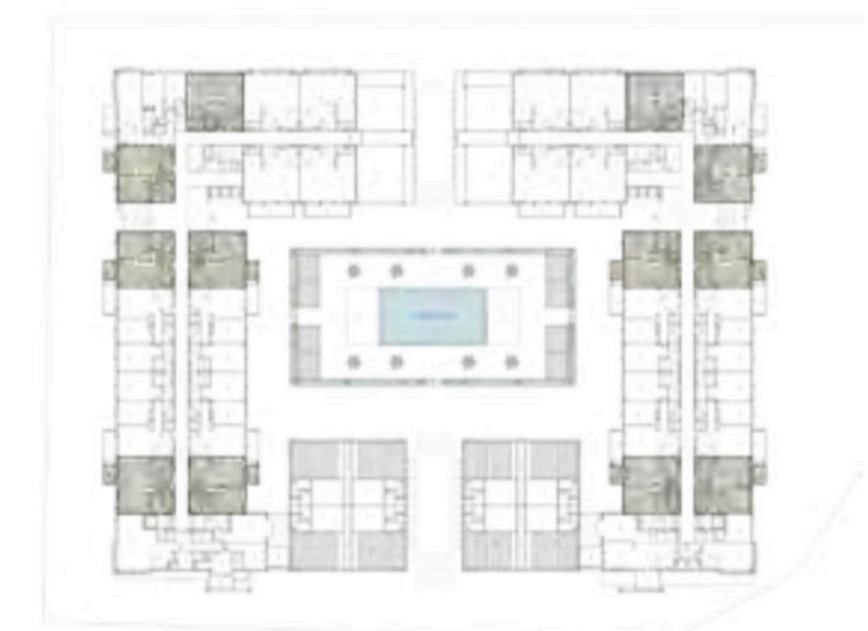
1 Bedroom Flat



| | |
|---------------|-----------|
| Internal Area | 726 Sq Ft |
| External Area | 64 Sq Ft |
| Total Area | 790 Sq Ft |

| Floor Number | 2 nd | 3 rd | 4 th | 5 th | 6 th | 7 th | 8 th | 9 th |
|--------------|--|--|--|--|--|--|---------------------------------------|-----------------|
| Unit Number | N 203, N 204 N 209, N 210 N 211, N 216 | N 303, N 304 N 309, N 310 N 311, N 316 | N 403, N 404 N 409, N 410 N 411, N 416 | N 503, N 504 N 509, N 510 N 511, N 516 | N 603, N 604 N 609, N 610 N 611, N 616 | N 703, N 704 N 709, N 710 N 711, N 716 | N 803, N 804 N 809, N 810 N 811 | N 911, N 916 |
| | S 223, S 224 S 229, S 230 S 231, S 236 | S 323, S 324 S 329, S 330 S 331, S 336 | S 423, S 424 S 429, S 430 S 431, S 436 | S 523, S 524 S 529, S 530 S 531, S 536 | S 623, S 624 S 629, S 630 S 631, S 636 | S 723, S 724 S 729, S 730 S 731, S 736 | S 823, S 824 S 829, S 830 S 831 | S 931, S 936 |

Internal and external areas vary per unit



Second to ninth Floors

1 Bedroom Flat West Side

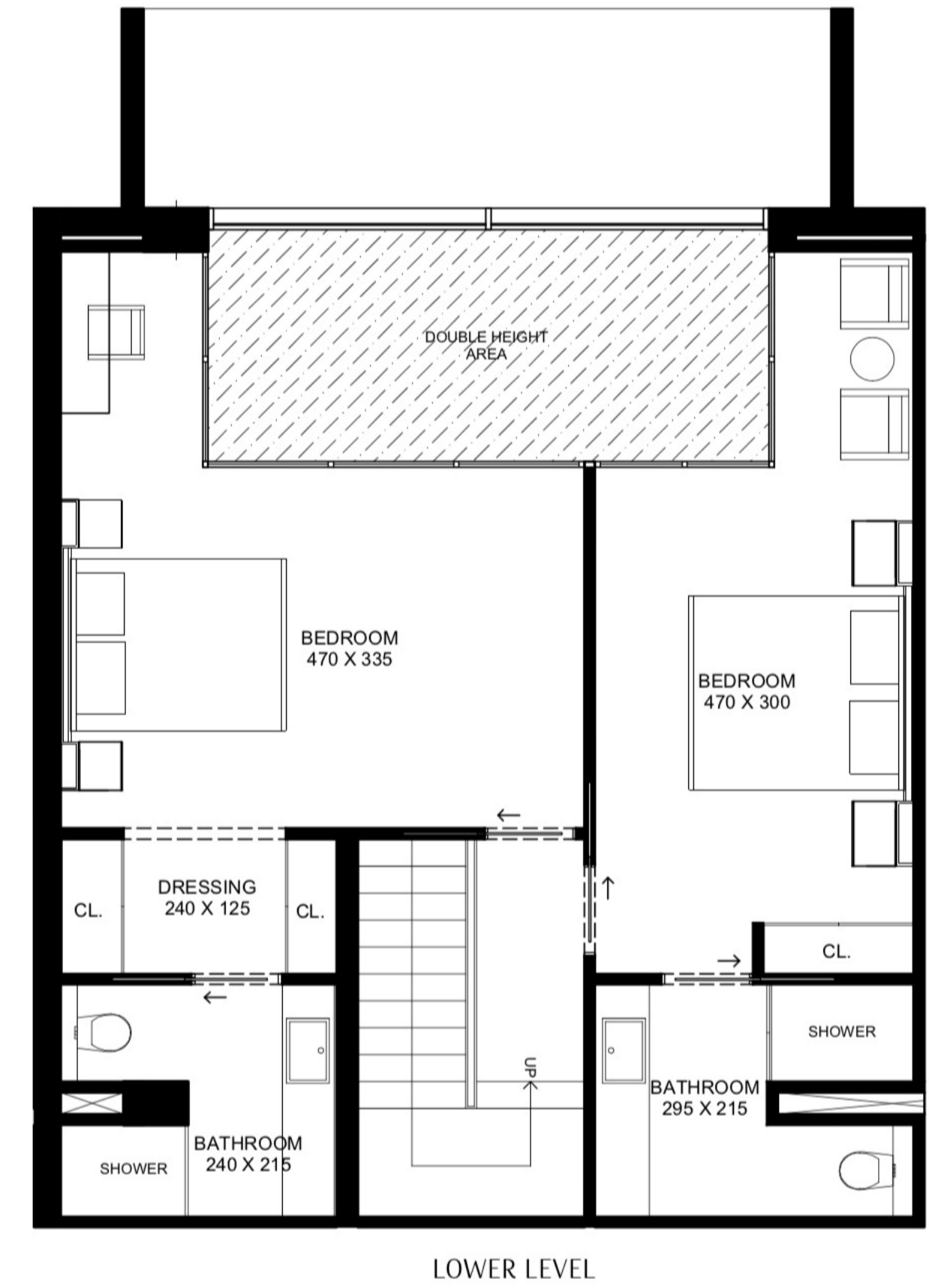
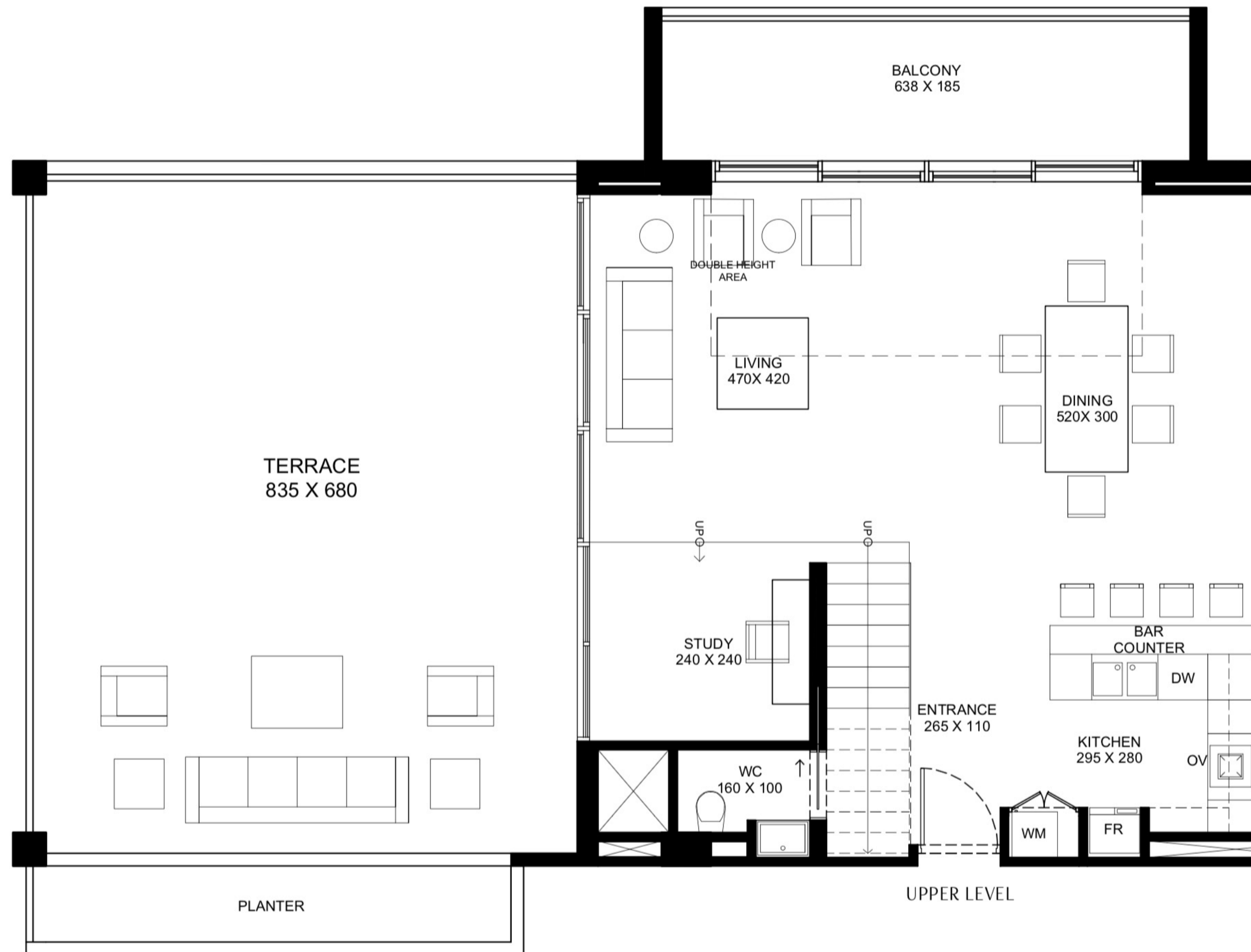


| | | | | | | | | | | |
|---------------|------------|--------------|-----------------|-----------------|-----------------|-----------------|-----------------|-----------------|-----------------|-----------------|
| Internal Area | 897 Sq Ft | Floor Number | 2 nd | 3 rd | 4 th | 5 th | 6 th | 7 th | 8 th | 9 th |
| External Area | 191 Sq Ft | Unit Number | S 222 | S 322 | S 422 | S 522 | S 622 | S 722 | S 822 | S 922 |
| Total Area | 1088 Sq Ft | | | | | | | | | |



Second to ninth Floors

2 Bedroom Duplex with Terrace



| | |
|---------------|------------|
| Internal Area | 1397 Sq Ft |
| External Area | 940 Sq Ft |
| Total Area | 2337 Sq Ft |

| Floor Number | 2 nd | 4 th | 6 th |
|--------------|-----------------|-----------------|-----------------|
| Unit Number | N 214, N 219 | N 412, N 417 | N 612, N 617 |
| | S 234, S 239 | S 432, S 437 | S 632, S 637 |

Internal and external areas vary per unit



Second to Sixth floors

2 Bedroom Garden Duplex West Corner



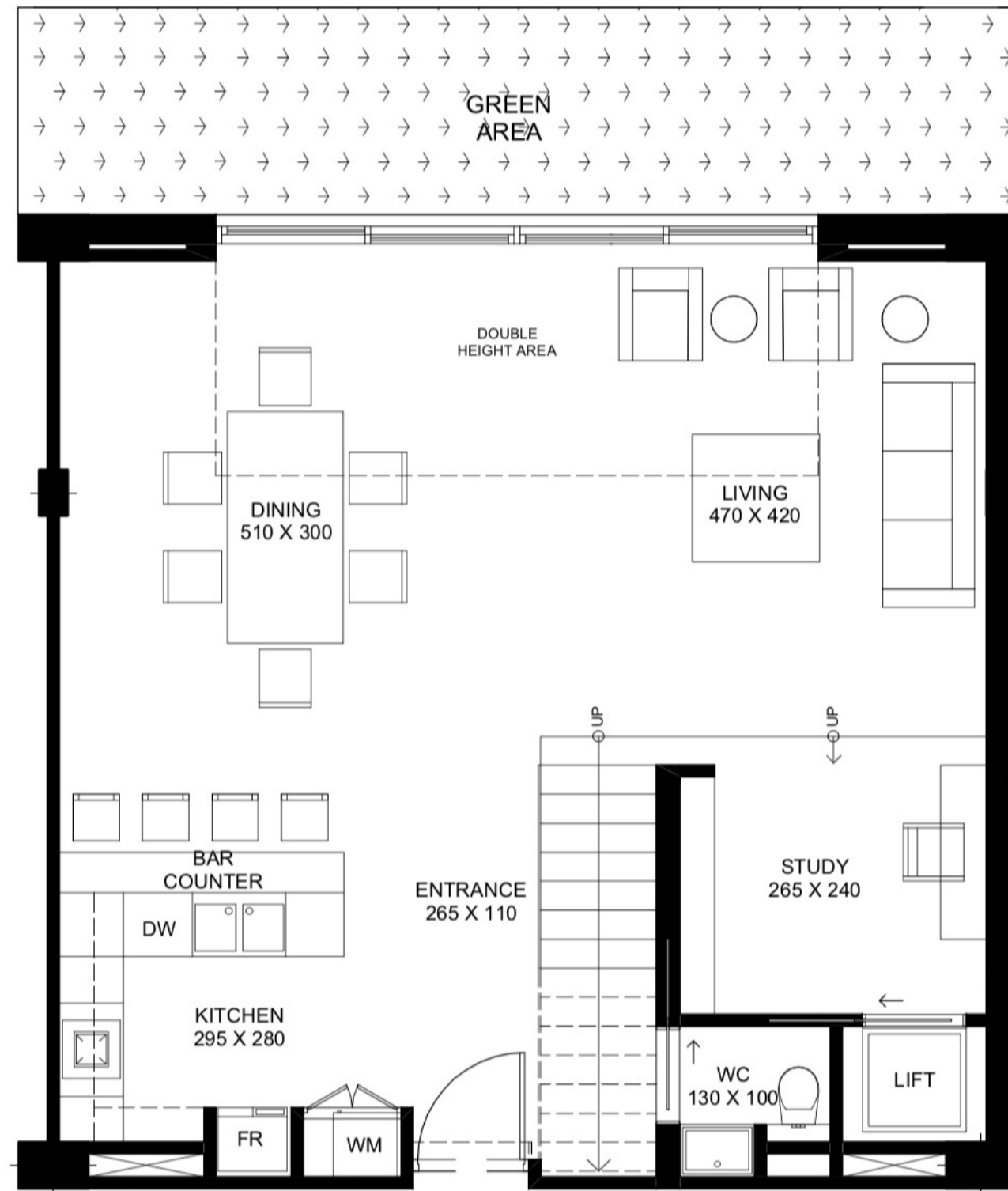
| | |
|---------------|------------|
| Internal Area | 1335 Sq Ft |
| External Area | 510 Sq Ft |
| Total Area | 1845 Sq Ft |

| | |
|--------------|--------|
| Floor Number | Ground |
| Unit Number | N 007 |

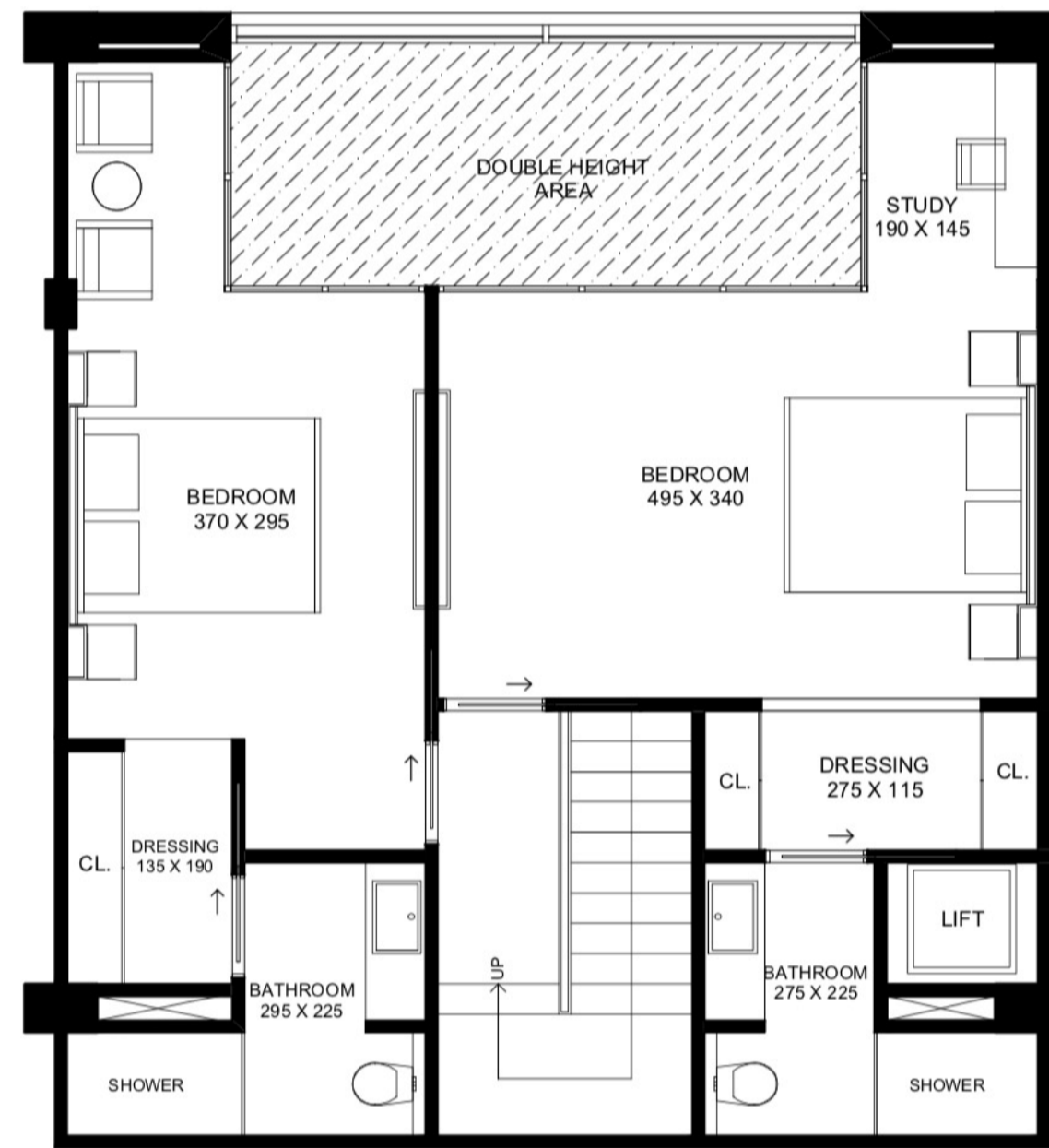


Ground Floor

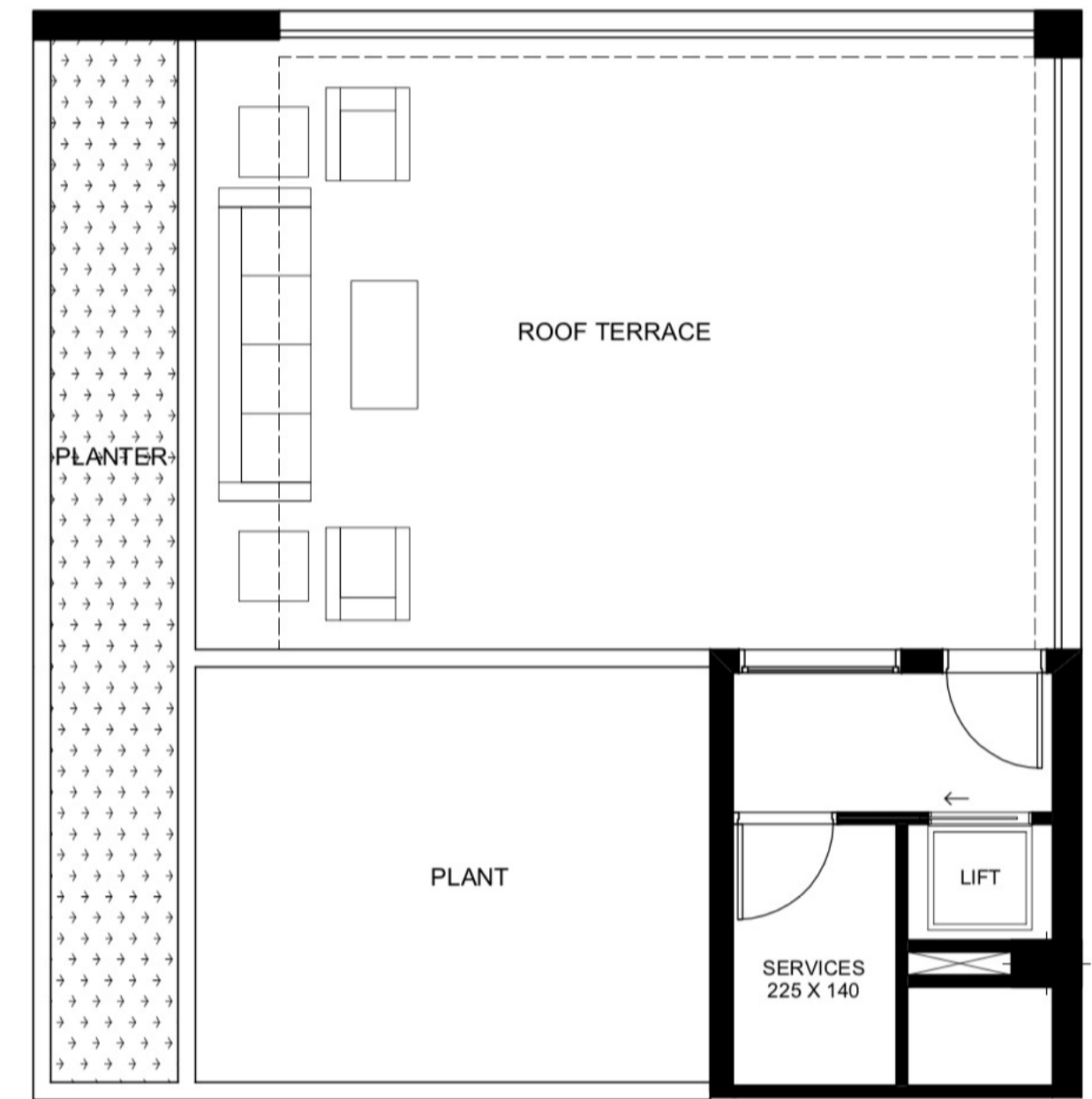
2 Bedroom Garden Duplex with Roof Terrace



LOWER LEVEL



UPPER LEVEL



ROOF LEVEL

| | |
|---------------|------------|
| Internal Area | 1532 Sq Ft |
| External Area | 1244 Sq Ft |
| Total Area | 2776 Sq Ft |

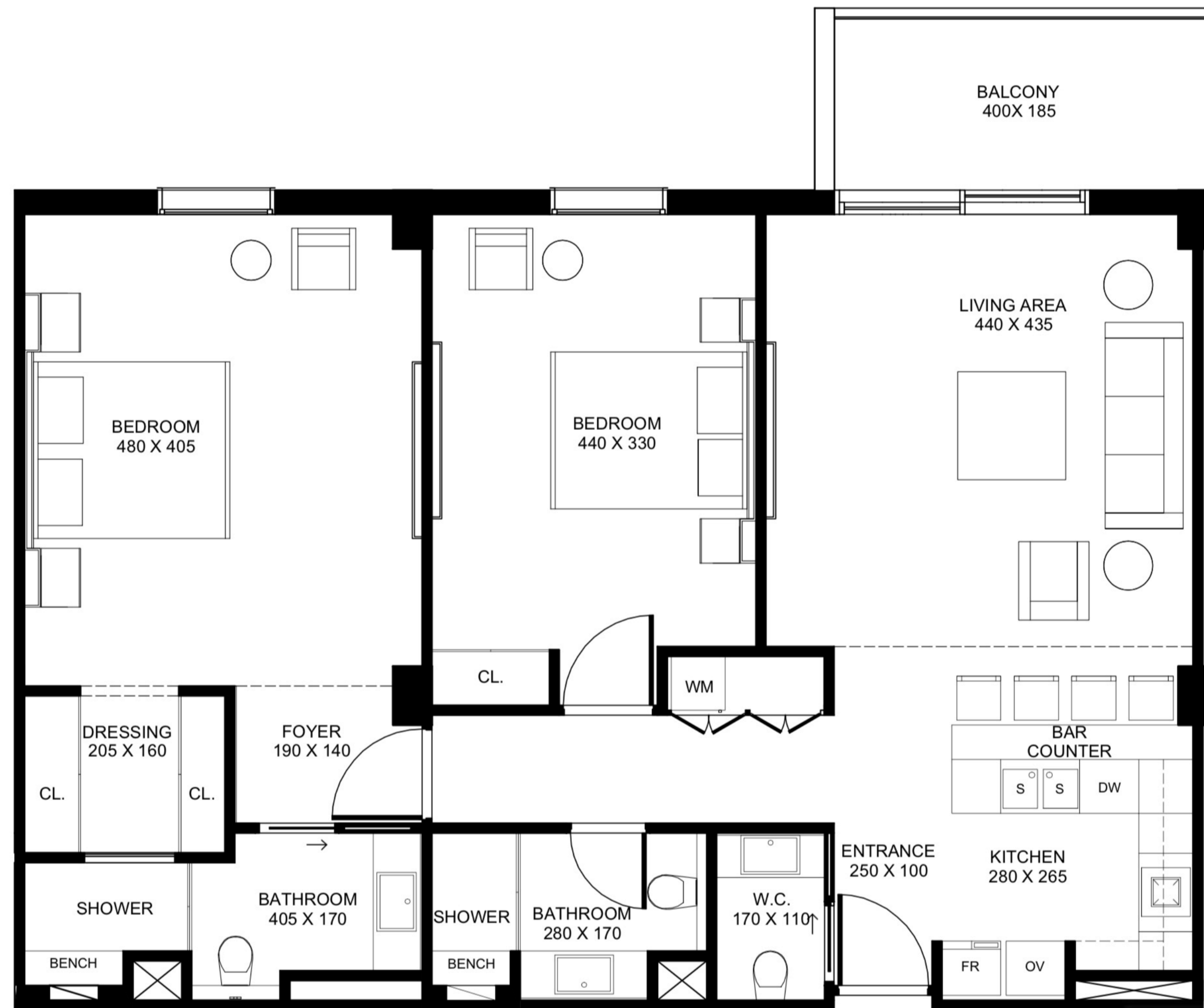
| | |
|--------------|--|
| Floor Number | Ground |
| Unit Number | N 001, N 002, N 003, N 004 S 041, S 042, S 043, S 044 |

Internal and external areas vary per unit



Ground Floor

2 Bedroom Flat



| | |
|---------------|------------|
| Internal Area | 1079 Sq Ft |
| External Area | 92 Sq Ft |
| Total Area | 1171 Sq Ft |

| Floor Number | 2 nd | 3 rd | 4 th | 5 th | 6 th | 7 th | 8 th |
|--------------|------------------------------|------------------------------|------------------------------|------------------------------|------------------------------|------------------------------|------------------------------|
| Unit Number | N 205, N 206 N 207, N 208 | N 305, N 306 N 307, N 308 | N 405, N 406 N 407, N 408 | N 505, N 506 N 507, N 508 | N 605, N 606 N 607, N 608 | N 705, N 706 N 707, N 708 | N 805, N 806 N 807, N 808 |
| | S 225, S 226 S 227, S 228 | S 325, S 326 S 327, S 328 | S 425, S 426 S 427, S 428 | S 525, S 526 S 527, S 528 | S 625, S 626 S 627, S 628 | S 725, S 726 S 727, S 728 | S 825, S 826 S 827, S 828 |



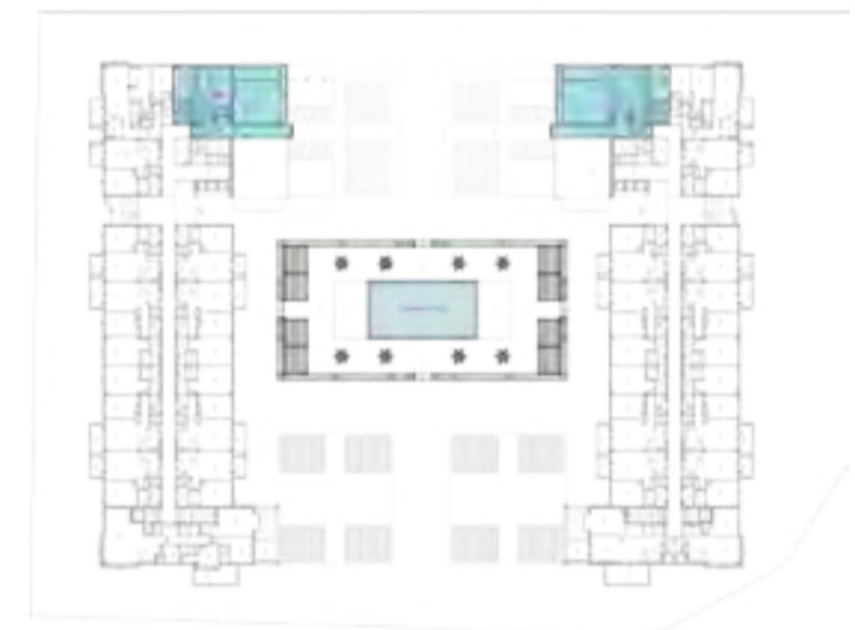
Second to Eighth Floors

2 Bedroom Flat East Side



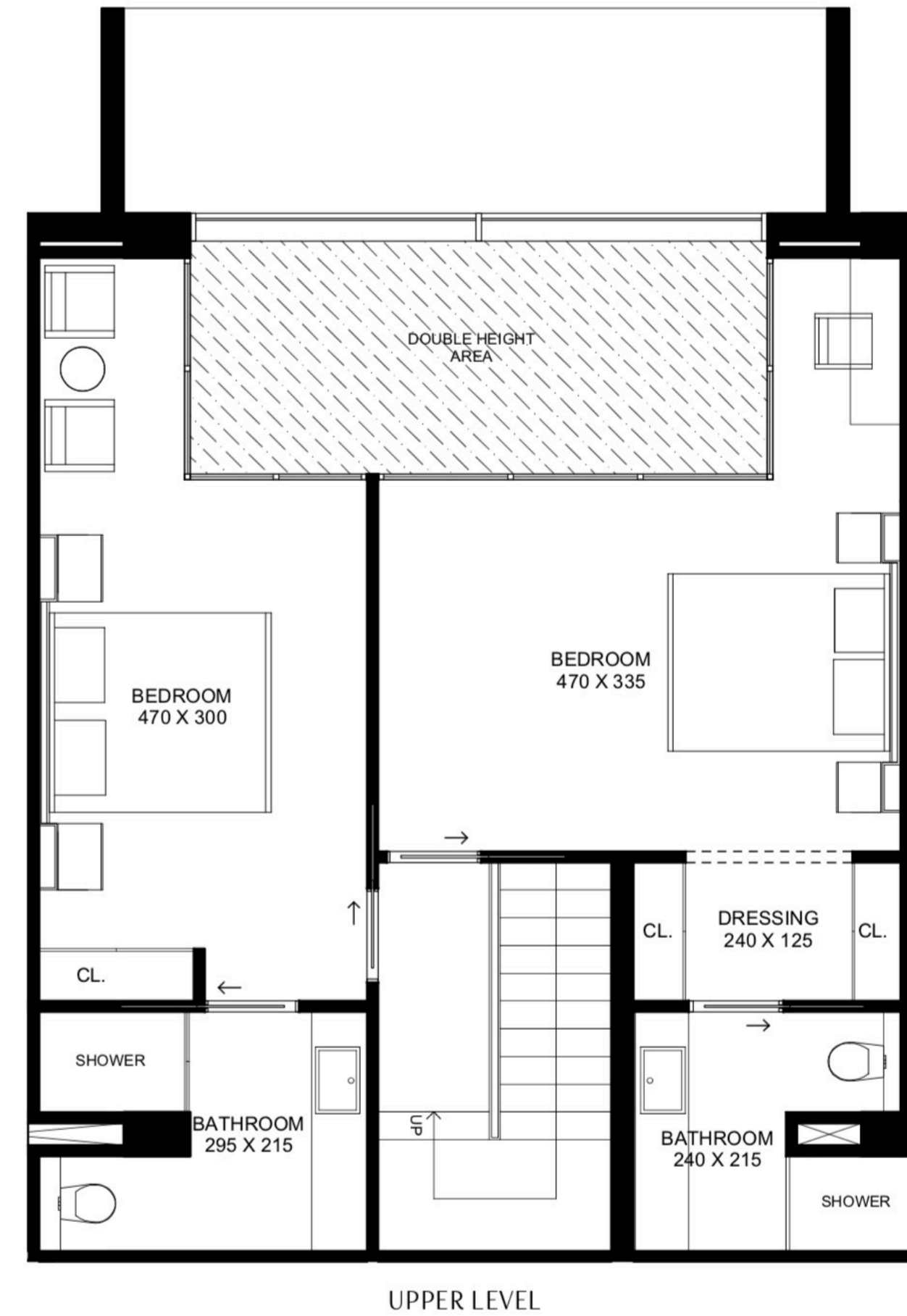
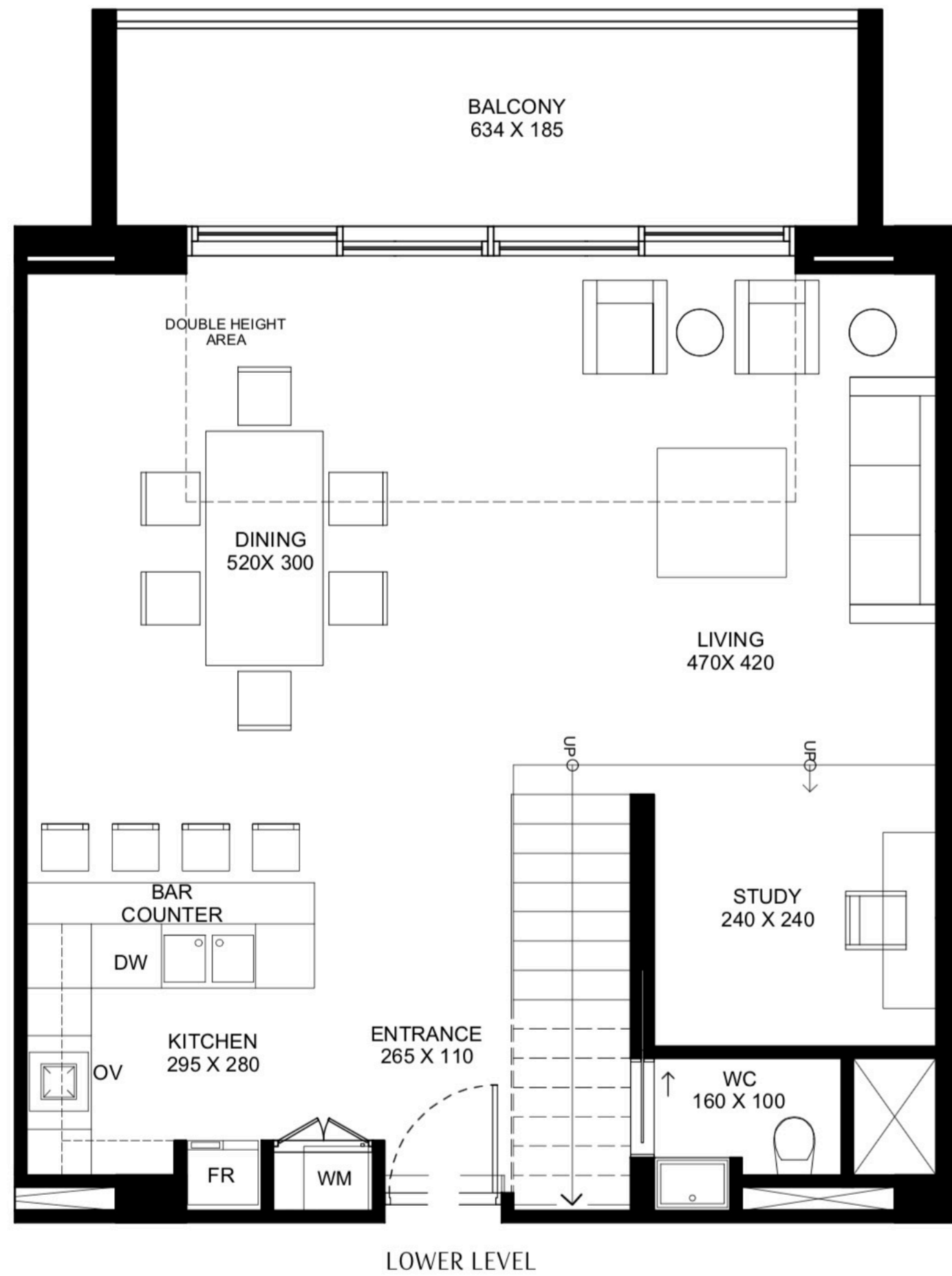
| | |
|---------------|------------|
| Internal Area | 910 Sq Ft |
| External Area | 880 Sq Ft |
| Total Area | 1790 Sq Ft |

| | |
|--------------|-----------------|
| Floor Number | 8 th |
| Unit Number | N 817 S 837 |



Eighth Floor

2 Bedroom Duplex



| | |
|---------------|------------|
| Internal Area | 1343 Sq Ft |
| External Area | 134 Sq Ft |
| Total Area | 1477 Sq Ft |

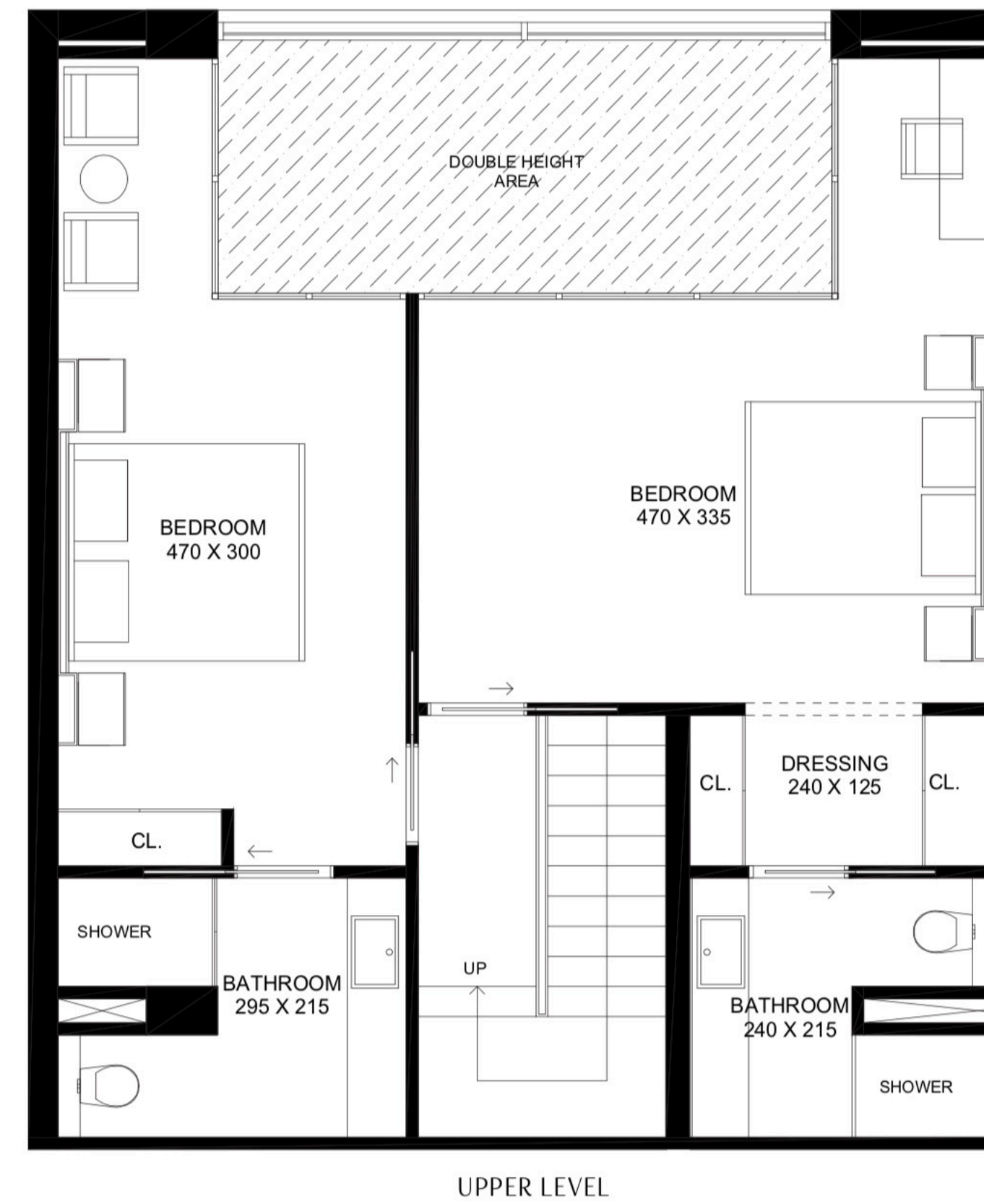
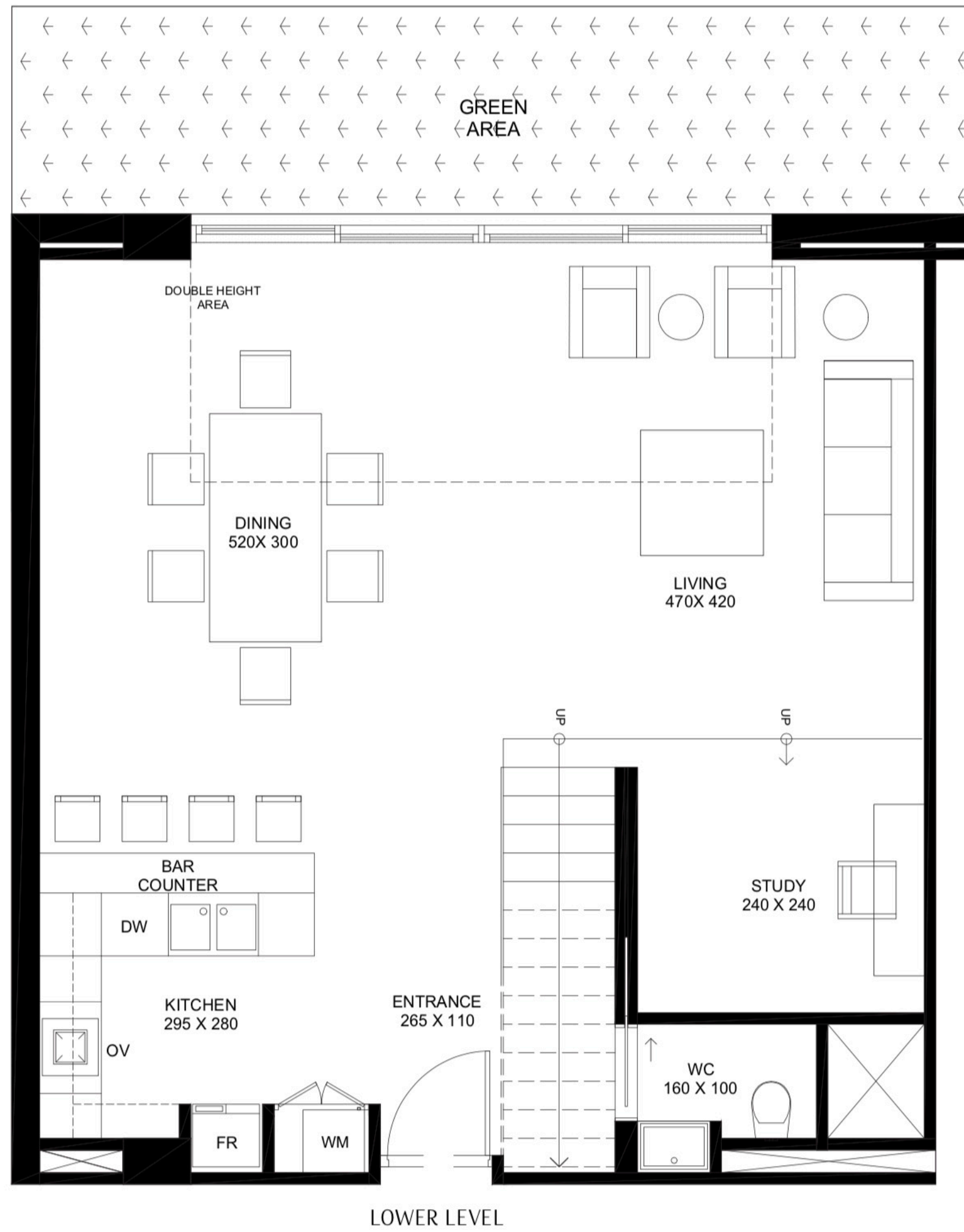
| | |
|--------------|------------------------------|
| Floor Number | 2 nd |
| Unit Number | N 212, N 217 S 232, S 237 |

Internal and external areas vary per unit



Second Floor

2 Bedroom Garden Duplex



| | |
|---------------|------------|
| Internal Area | 1336 Sq Ft |
| External Area | 306 Sq Ft |
| Total Area | 1642 Sq Ft |

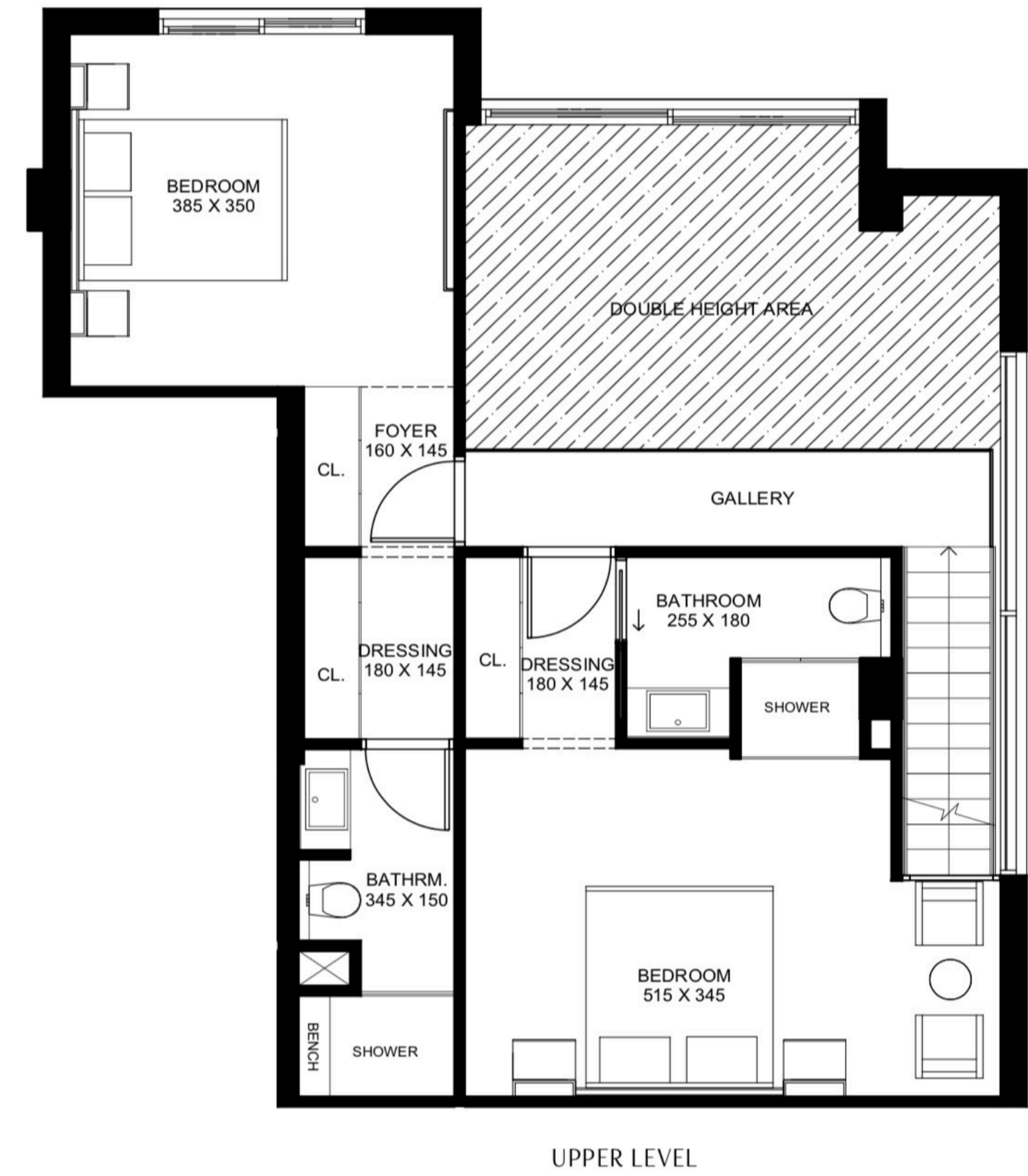
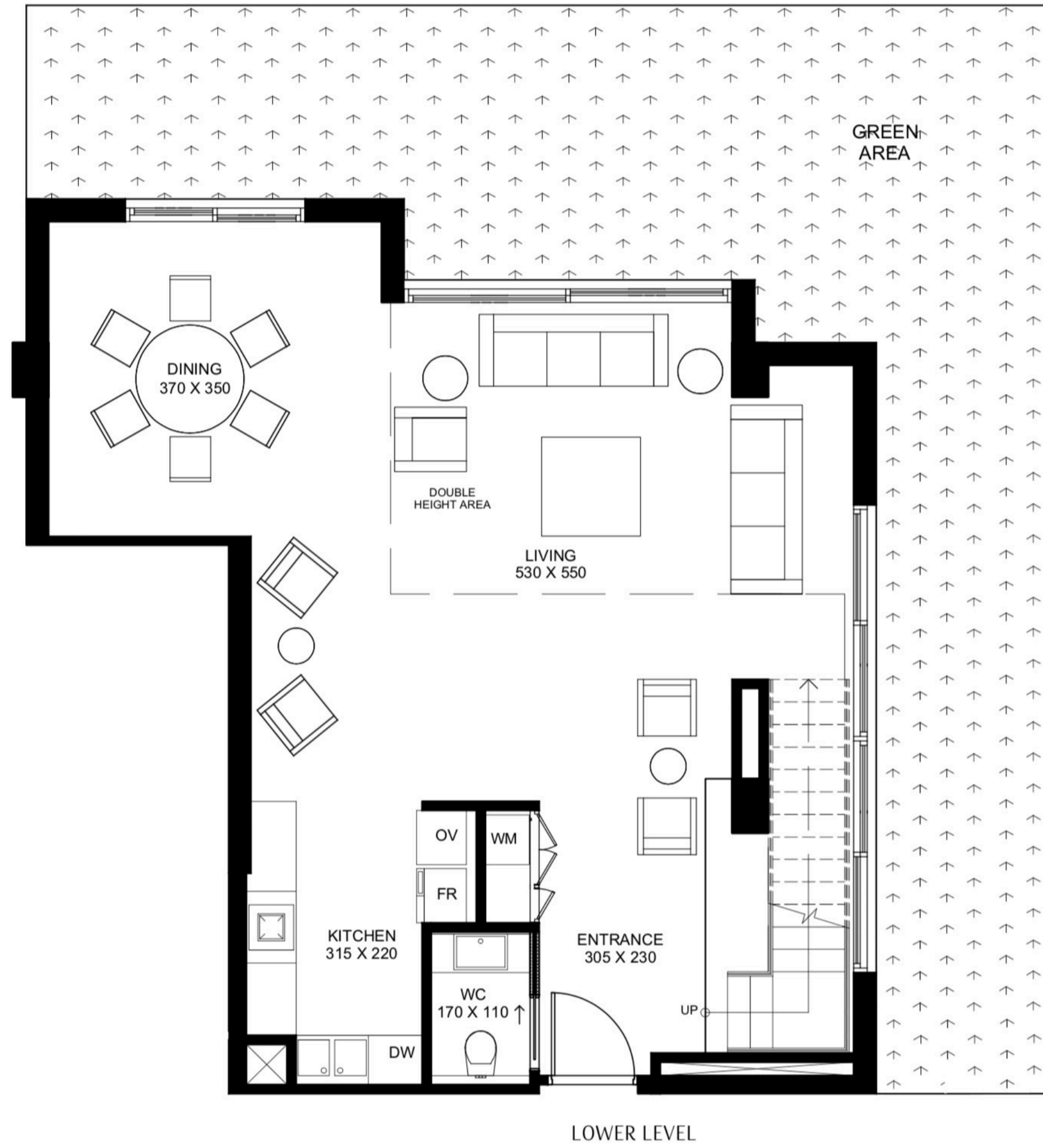
| | |
|--------------|--|
| Floor Number | Ground |
| Unit Number | N 006, N 008, N 009, N 010, N 011, N 012, N 014, N 015, N 016, N 017, N 018, N 019, N 020, N 027, N 029, N 031 S 048, S 050, S 052, S 054, S 056, S 058, S 060, S 067, S 069, S 071 |

Internal and external areas vary per unit



Ground Floor

2 Bedroom Garden Duplex West Side



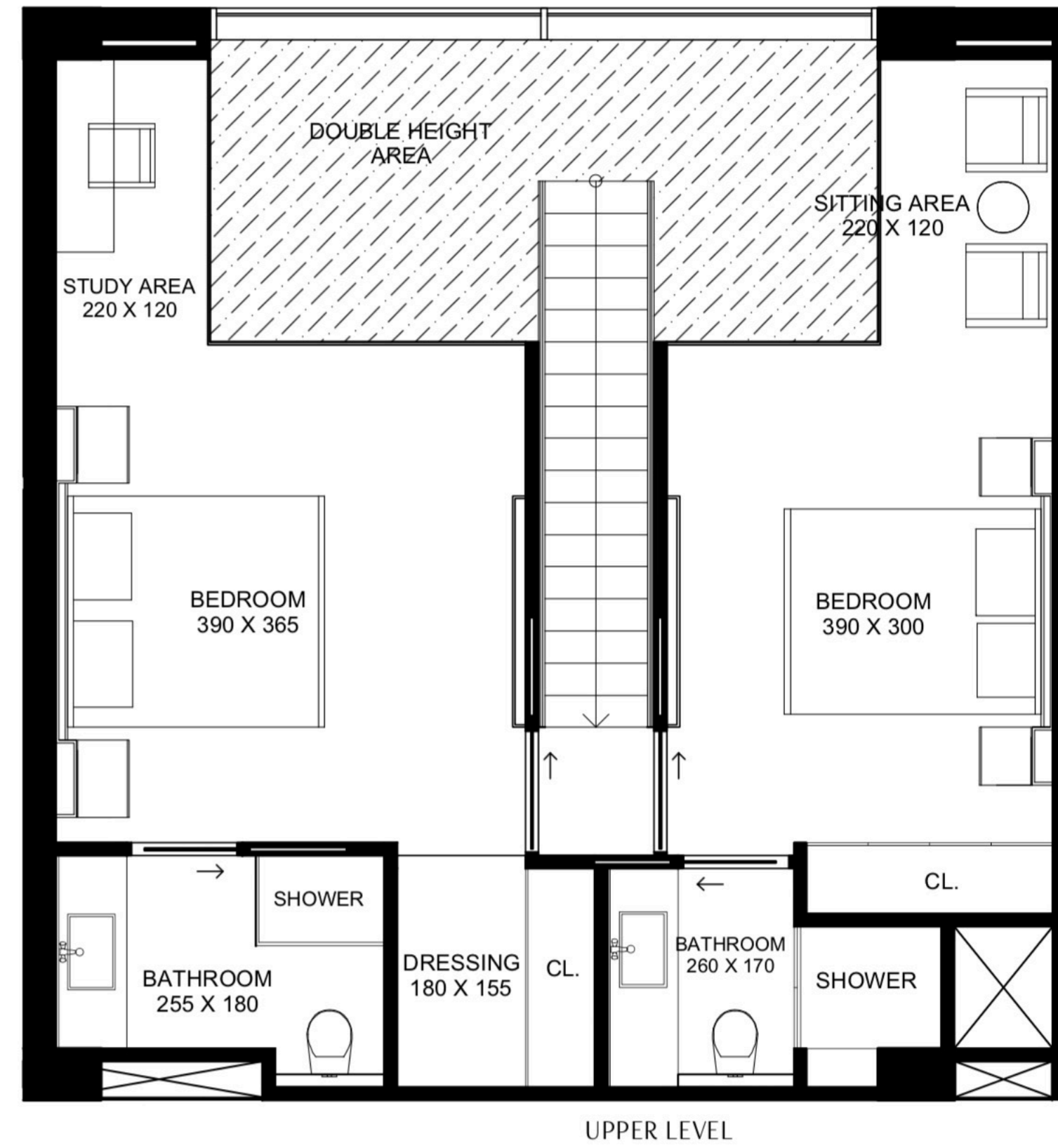
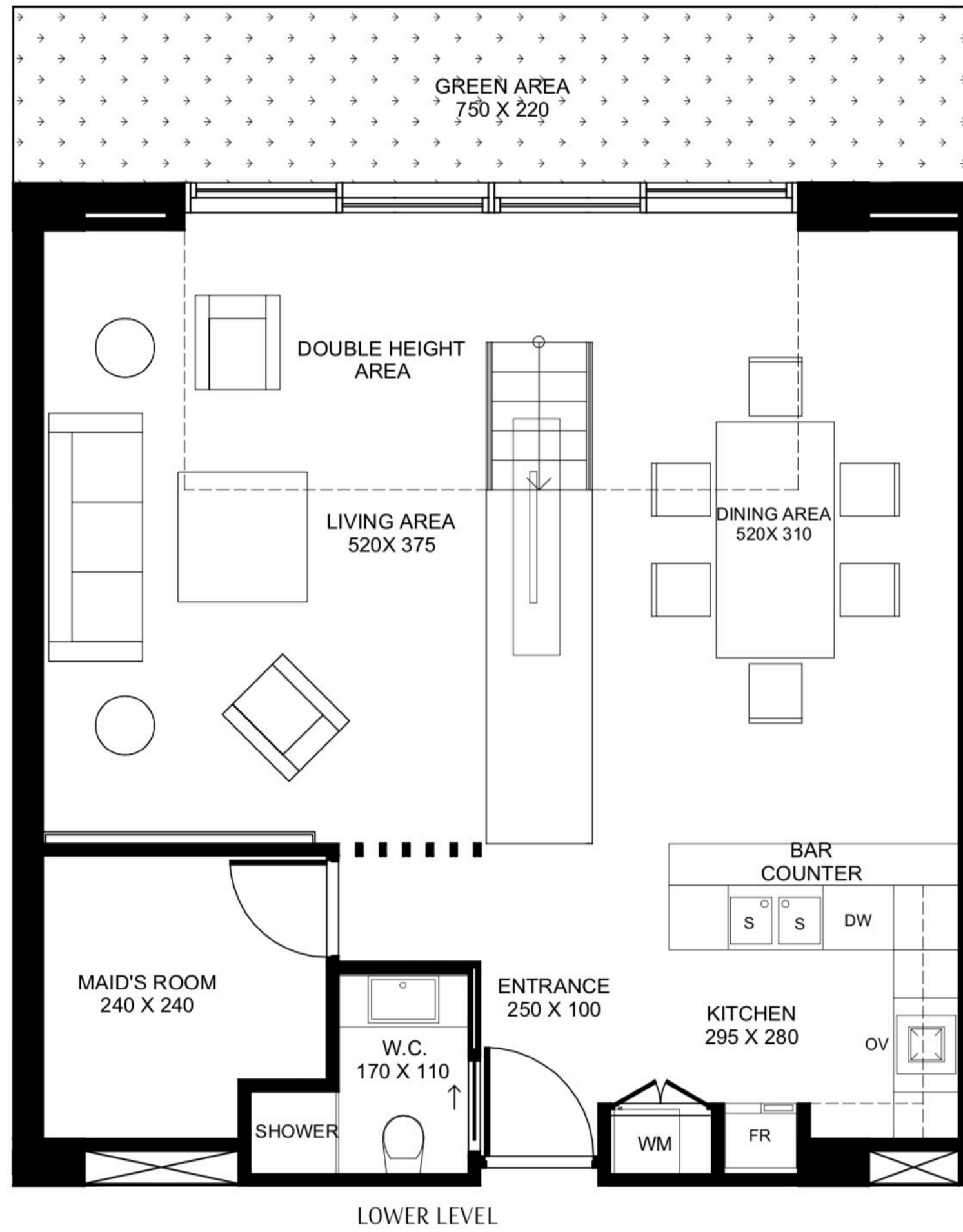
| | |
|---------------|------------|
| Internal Area | 1432 Sq Ft |
| External Area | 1460 Sq Ft |
| Total Area | 2892 Sq Ft |

| | |
|--------------|--------|
| Floor Number | Ground |
| Unit Number | N 005 |



Ground Floor

2 Bedroom Garden Duplex East Side

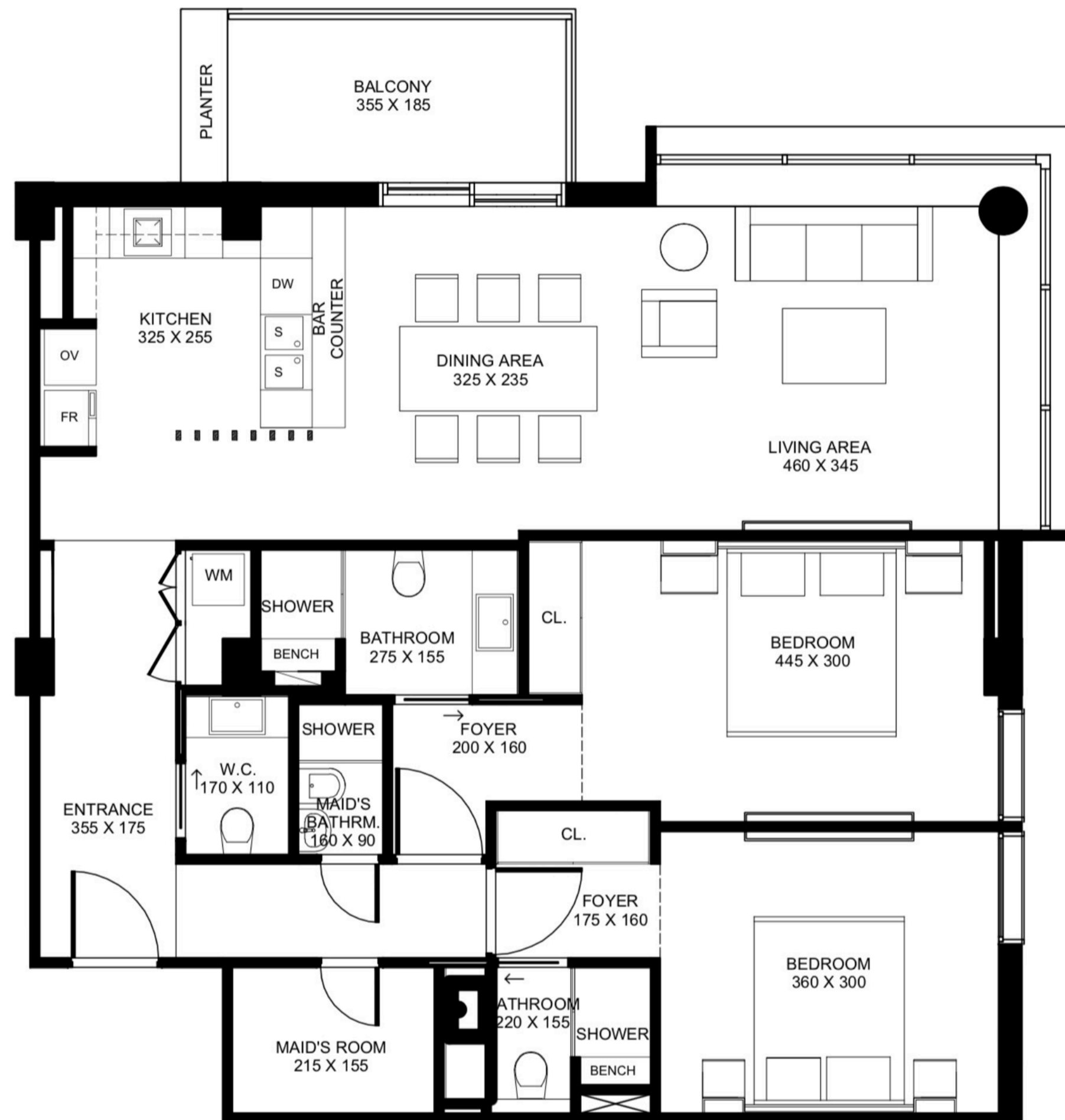


Ground Floor

| | |
|---------------|------------|
| Internal Area | 1294 Sq Ft |
| External Area | 308 Sq Ft |
| Total Area | 1602 Sq Ft |

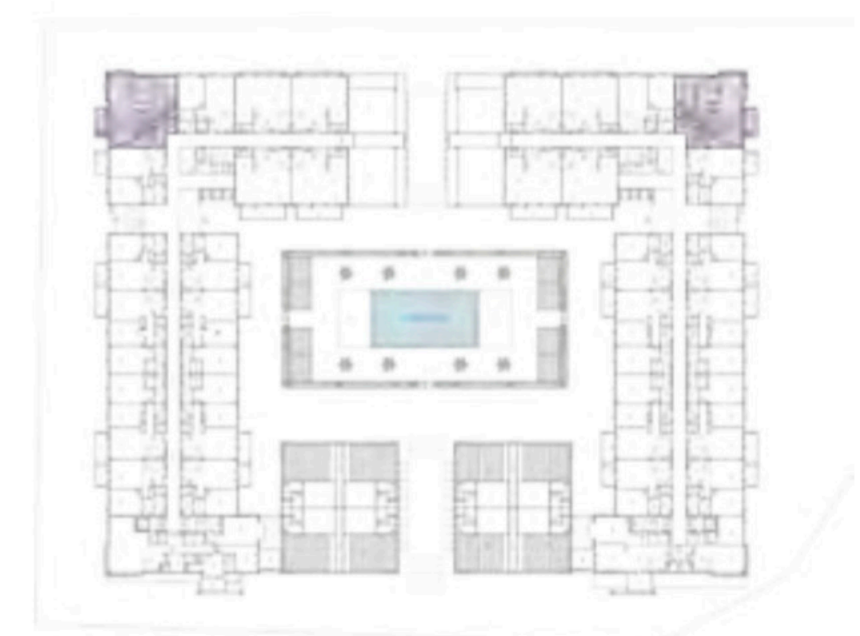
| | |
|--------------|--------|
| Floor Number | Ground |
| Unit Number | N 021 |

2 Bedroom Flat East Corner



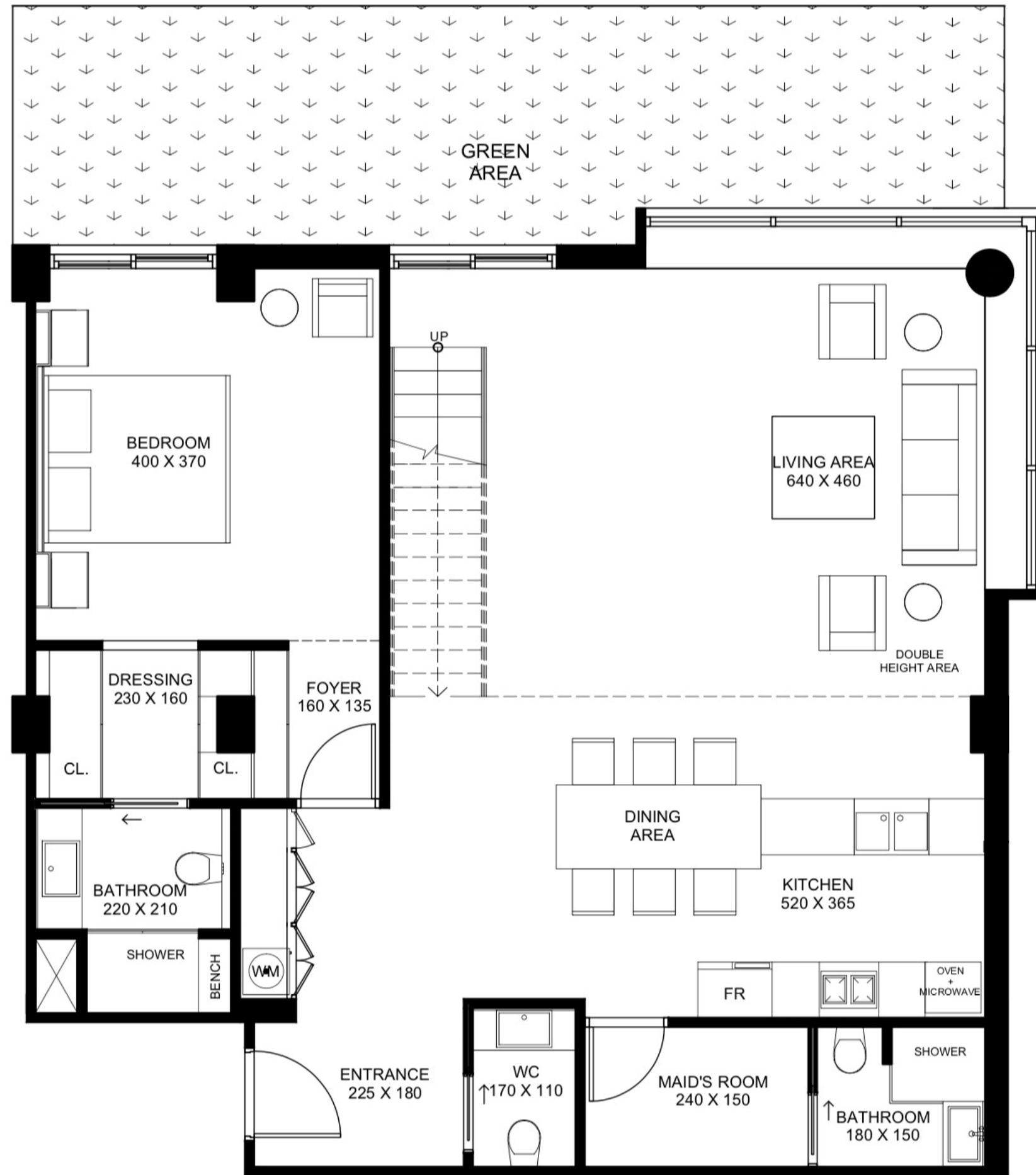
| | |
|---------------|------------|
| Internal Area | 1126 Sq Ft |
| External Area | 87 Sq Ft |
| Total Area | 1213 Sq Ft |

| | | | | | | | | |
|--------------|-----------------|-----------------|-----------------|-----------------|-----------------|-----------------|-----------------|-----------------|
| Floor Number | 2 nd | 3 rd | 4 th | 5 th | 6 th | 7 th | 8 th | 9 th |
| Unit Number | N 215 S 235 | N 315 S 335 | N 415 S 435 | N 515 S 535 | N 615 S 635 | N 715 S 735 | N 815 S 835 | N 915 S 935 |



Second to Ninth floors

3 Bedroom Garden East Corner Duplex



LOWER LEVEL



UPPER LEVEL

| | |
|---------------|------------|
| Internal Area | 1867 Sq Ft |
| External Area | 397 Sq Ft |
| Total Area | 2264 Sq Ft |

| | |
|--------------|--------|
| Floor Number | Ground |
| Unit Number | N 025 |



Ground Floor

3 Bedroom Flat



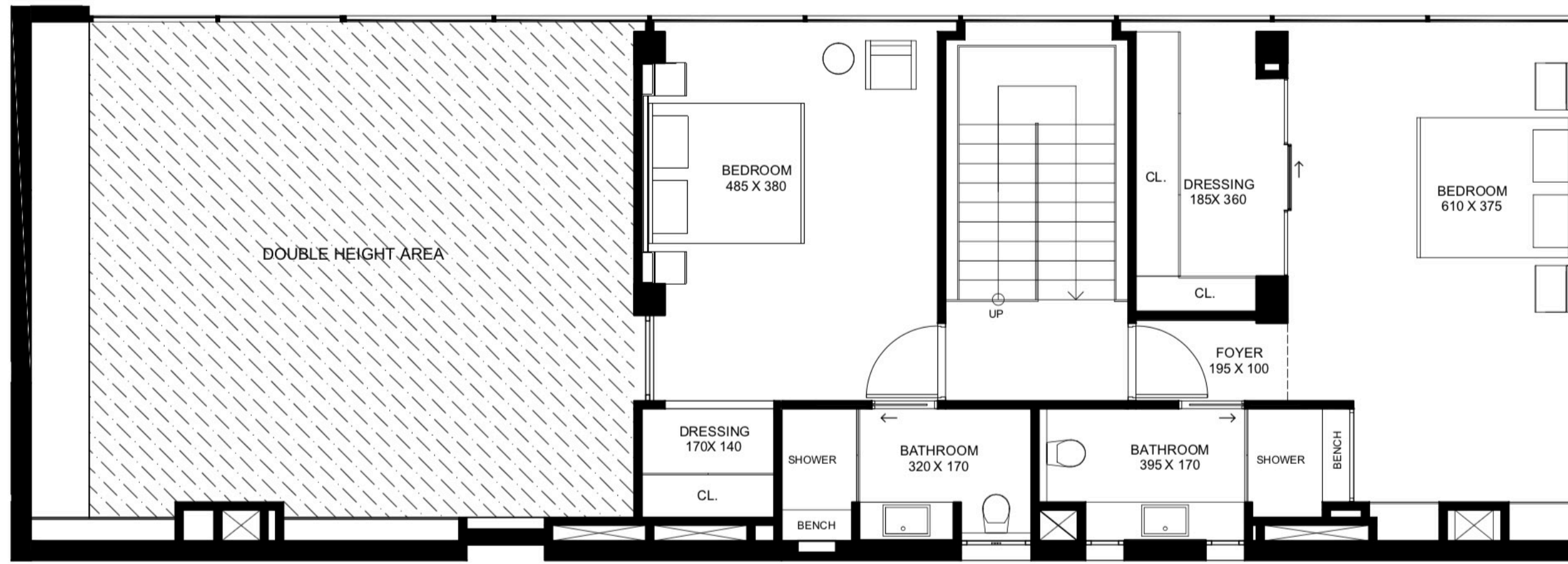
| | |
|---------------|------------|
| Internal Area | 1705 Sq Ft |
| External Area | 165 Sq Ft |
| Total Area | 1870 Sq Ft |

| | | | | | | | | |
|--------------|-----------------|-----------------|-----------------|-----------------|-----------------|-----------------|-----------------|-----------------|
| Floor Number | 2 nd | 3 rd | 4 th | 5 th | 6 th | 7 th | 8 th | 9 th |
| Unit Number | N 200 | N 300 | N 400 | N 500 | N 600 | N 700 | N 800 | N 900 |

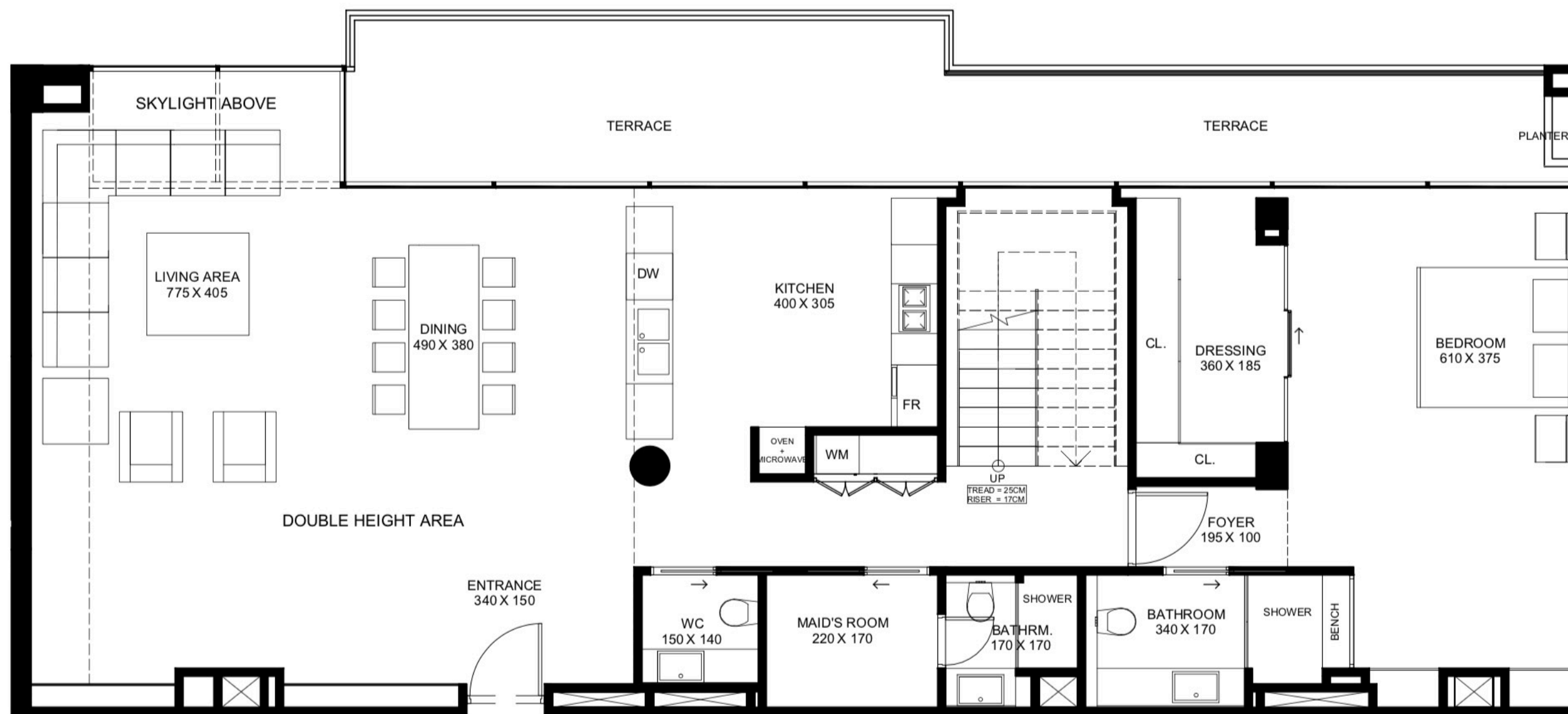


Second to Ninth floors

3 Bedroom Penthouse



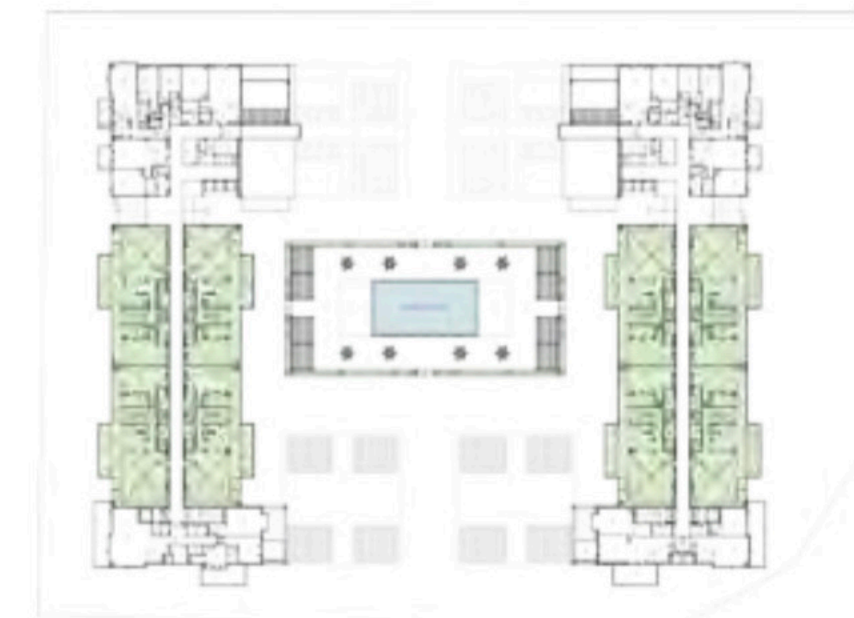
UPPER LEVEL



LOWER LEVEL

| | |
|---------------|------------|
| Internal Area | 2382 Sq Ft |
| External Area | 412 Sq Ft |
| Total Area | 2794 Sq Ft |

| | |
|--------------|---|
| Floor Number | 9 th |
| Unit Number | N 905, N 906 N 907, N 908 S 925, S 926 S 927, S928 |



Ninth floor

The Terraces



Premier Estates, P03 Building 2, Bay Square, Business Bay, Dubai - UAE, ORN : 11814
Phone: +971 4 425 2780 Fax: +971 4 425 2601 Email: info@dubaipremierestates.com

www.dubaipremierestates.com