

**URBANOASIS**  
BY  
**MISSONI**

**PENTHOUSES FLOOR PLANS**

DAR  
AL ARKAN  
دار الأركان

# LEVEL 2

3 BEDROOM

TOTAL AREA

178 sq.m / 1916 sq.ft

UNIT N<sup>o</sup>

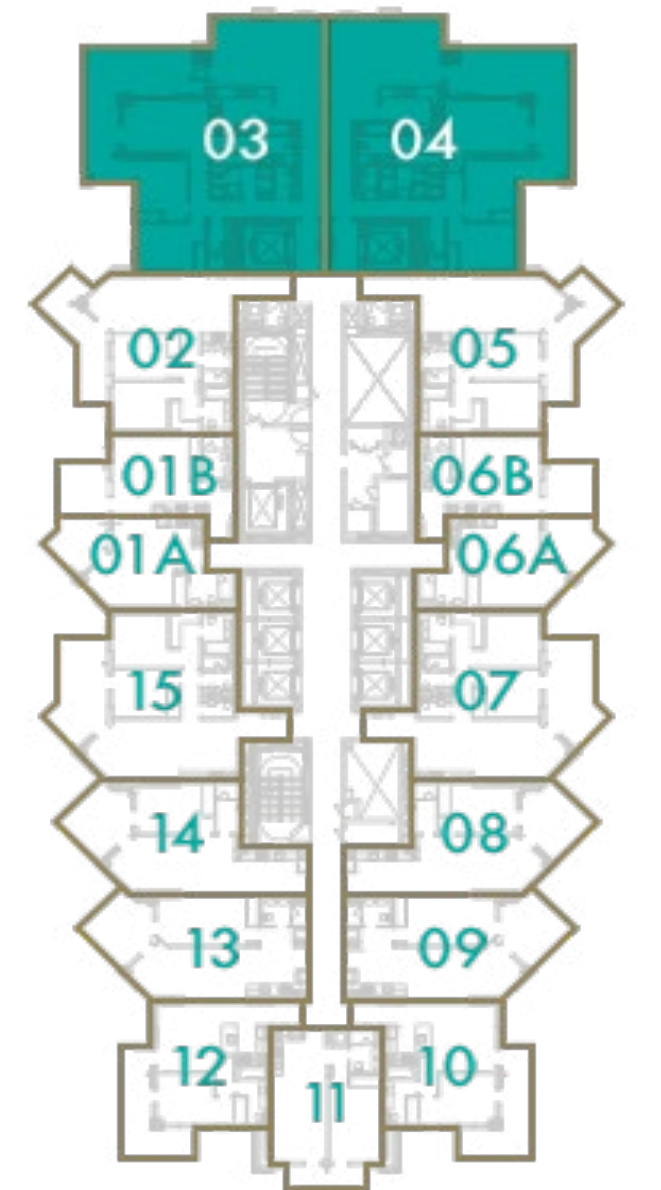
3 & 4

URBAN OASIS BY **MISSONI**

Disclaimer: All pictures, plans, layouts, information, data and details included in this brochure are indicative only and may change at any time up to the final 'as built' status in accordance with final designs of the project, regulatory approvals and planning permissions. All accessories and interior finishes such as wallpaper, chandeliers, furniture, electronics, white goods, curtains, hard and soft landscaping, pavements, features, gym, swimming pool(s) and other elements displayed in the brochure, or within the show apartment or between the plot boundary and the unit, are not part of the unit and are shown for illustrative purposes only.



DUBAI CANAL



DAR  
AL ARKAN  
دار الأركان

# LEVELS 3 - 14

3 BEDROOM

TOTAL AREA

178 sq.m / 1916 sq.ft

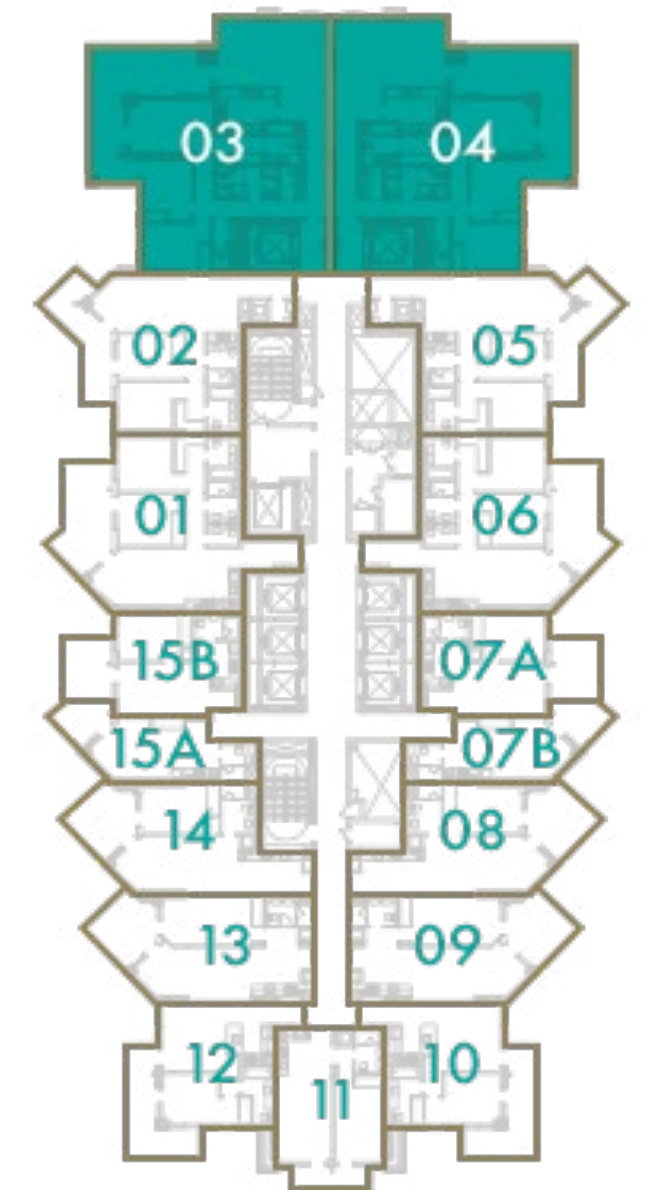
UNIT N<sup>o</sup>

3 & 4

URBAN OASIS BY **MISSONI**



DUBAI CANAL



Disclaimer: All pictures, plans, layouts, information, data and details included in this brochure are indicative only and may change at any time up to the final 'as built' status in accordance with final designs of the project, regulatory approvals and planning permissions. All accessories and interior finishes such as wallpaper, chandeliers, furniture, electronics, white goods, curtains, hard and soft landscaping, pavements, features, gym, swimming pool(s) and other elements displayed in the brochure, or within the show apartment or between the plot boundary and the unit, are not part of the unit and are shown for illustrative purposes only.



DAR  
AL ARKAN  
دار الأركان

# LEVEL 15

## 3 BEDROOM

TOTAL AREA

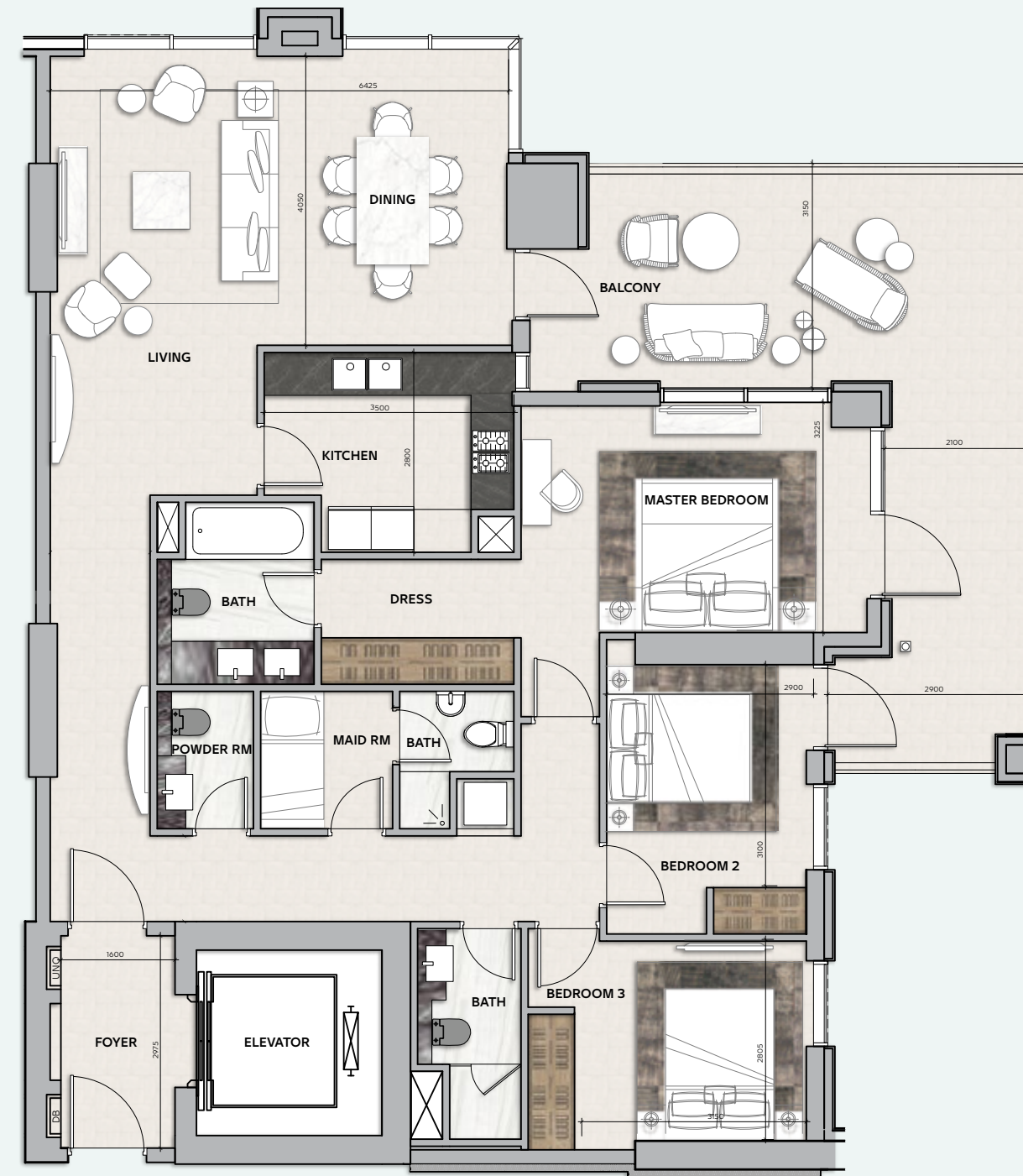
178 sq.m / 1916 sq.ft

UNIT N<sup>o</sup>

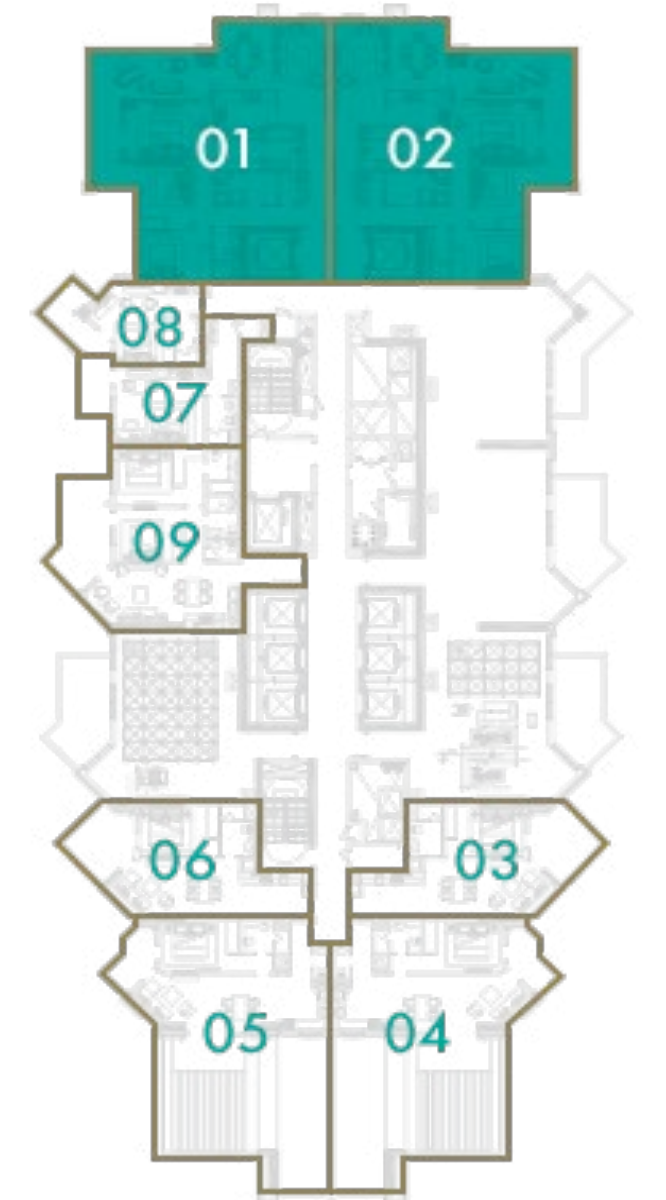
1 & 2

URBAN OASIS BY **MISSONI**

Disclaimer: All pictures, plans, layouts, information, data and details included in this brochure are indicative only and may change at any time up to the final 'as built' status in accordance with final designs of the project, regulatory approvals and planning permissions. All accessories and interior finishes such as wallpaper, chandeliers, furniture, electronics, white goods, curtains, hard and soft landscaping, pavements, features, gym, swimming pool(s) and other elements displayed in the brochure, or within the show apartment or between the plot boundary and the unit, are not part of the unit and are shown for illustrative purposes only.



DUBAI CANAL



DAR  
AL ARKAN  
دار الأركان

# LEVELS 16 - 23

3 BEDROOM

TOTAL AREA

178 sq.m / 1916 sq.ft

UNIT N<sup>o</sup>

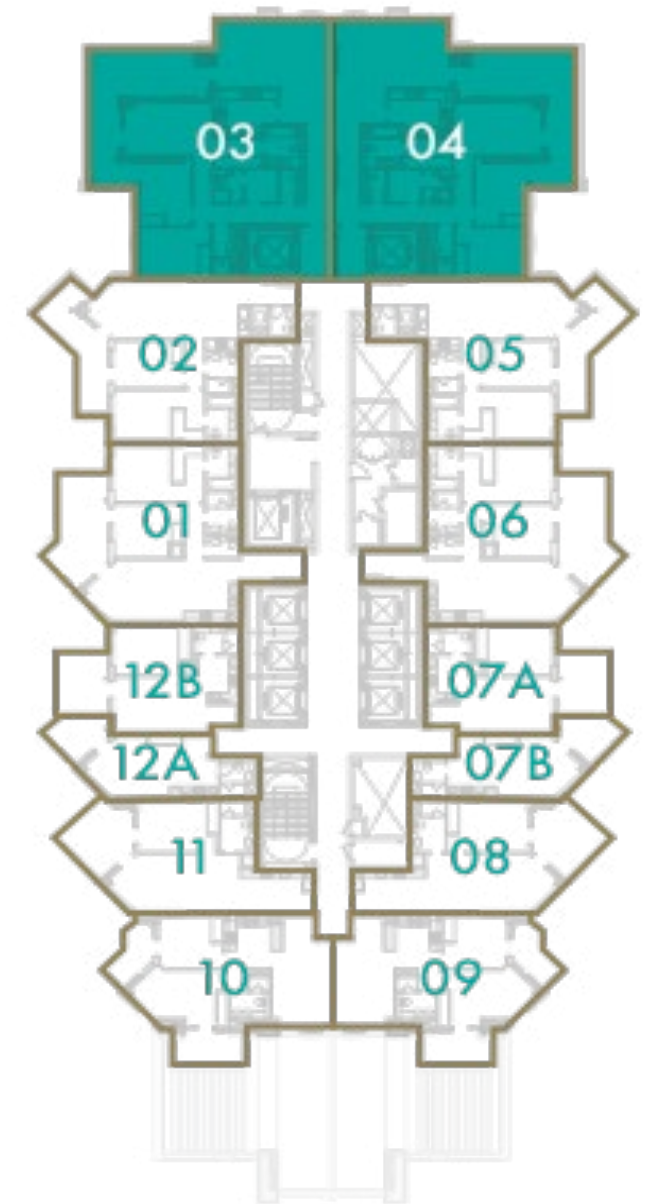
3 & 4

URBAN OASIS BY **MISSONI**

Disclaimer: All pictures, plans, layouts, information, data and details included in this brochure are indicative only and may change at any time up to the final 'as built' status in accordance with final designs of the project, regulatory approvals and planning permissions. All accessories and interior finishes such as wallpaper, chandeliers, furniture, electronics, white goods, curtains, hard and soft landscaping, pavements, features, gym, swimming pool(s) and other elements displayed in the brochure, or within the show apartment or between the plot boundary and the unit, are not part of the unit and are shown for illustrative purposes only.



DUBAI CANAL



DAR  
AL ARKAN  
دار الأركان

# LEVEL 24

## 3 BEDROOM

TOTAL AREA

178 sq.m / 1916 sq.ft

UNIT N<sup>o</sup>

3 & 4

URBAN OASIS BY **MISSONI**

Disclaimer: All pictures, plans, layouts, information, data and details included in this brochure are indicative only and may change at any time up to the final 'as built' status in accordance with final designs of the project, regulatory approvals and planning permissions. All accessories and interior finishes such as wallpaper, chandeliers, furniture, electronics, white goods, curtains, hard and soft landscaping, pavements, features, gym, swimming pool(s) and other elements displayed in the brochure, or within the show apartment or between the plot boundary and the unit, are not part of the unit and are shown for illustrative purposes only.



DUBAI CANAL



DAR  
AL ARKAN  
دار الأركان

# LEVELS 25 - 29

3 BEDROOM

TOTAL AREA

178 sq.m / 1916 sq.ft

UNIT N<sup>o</sup>

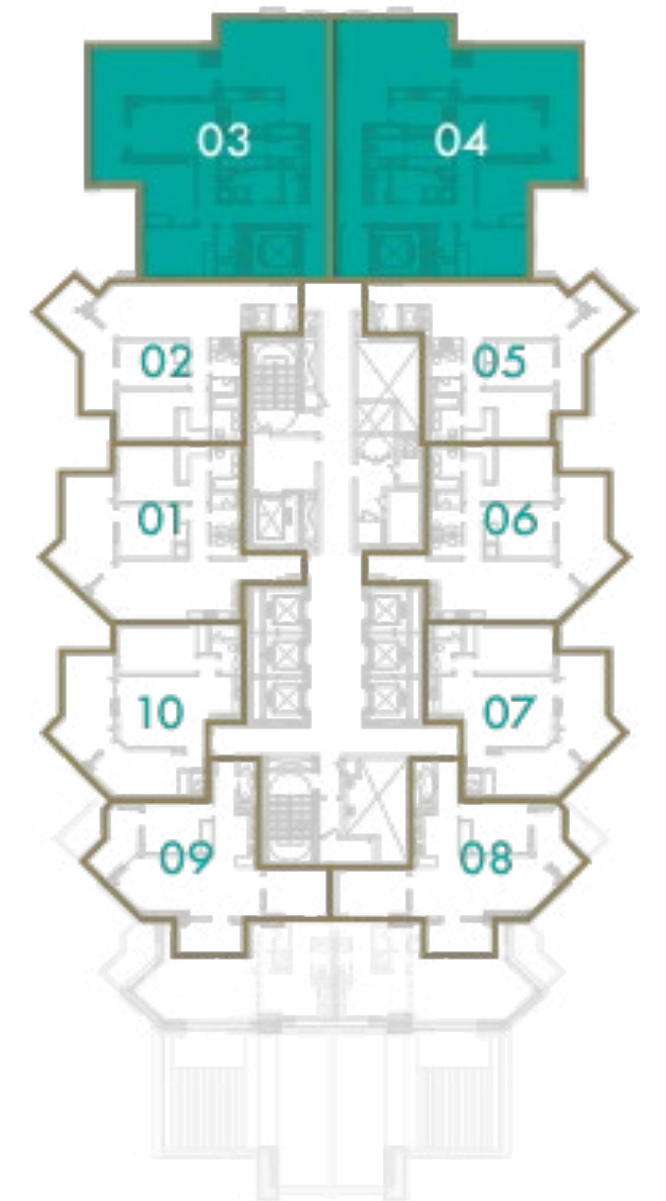
3 & 4

URBAN OASIS BY **MISSONI**

Disclaimer: All pictures, plans, layouts, information, data and details included in this brochure are indicative only and may change at any time up to the final 'as built' status in accordance with final designs of the project, regulatory approvals and planning permissions. All accessories and interior finishes such as wallpaper, chandeliers, furniture, electronics, white goods, curtains, hard and soft landscaping, pavements, features, gym, swimming pool(s) and other elements displayed in the brochure, or within the show apartment or between the plot boundary and the unit, are not part of the unit and are shown for illustrative purposes only.



DUBAI CANAL



DAR  
AL ARKAN  
دار الأركان

# LEVEL 30

## 4 BEDROOM

### TOTAL AREA

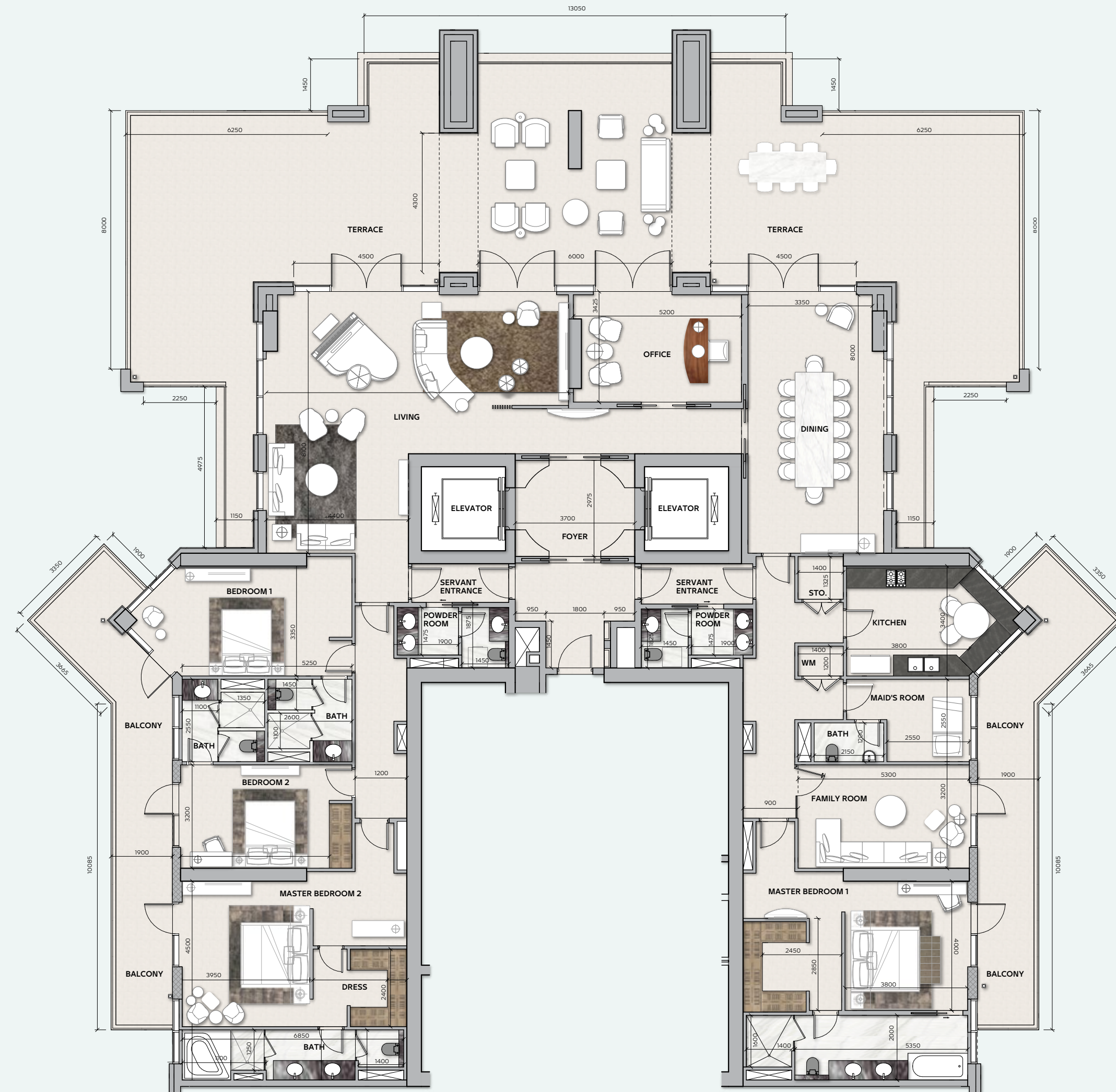
686 sq.m / 7385 sq.ft

### UNIT N<sup>o</sup>

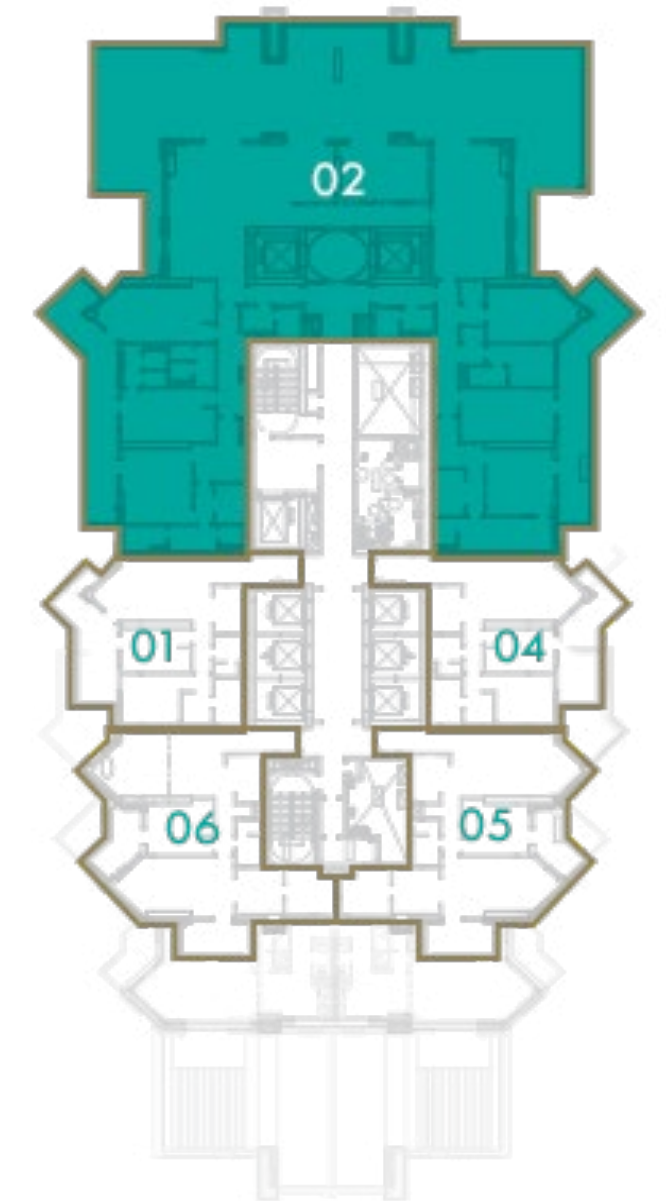
2

URBAN OASIS BY **MISSONI**

Disclaimer: All pictures, plans, layouts, information, data and details included in this brochure are indicative only and may change at any time up to the final 'as built' status in accordance with final designs of the project, regulatory approvals and planning permissions. All accessories and interior finishes such as wallpaper, chandeliers, furniture, electronics, white goods, curtains, hard and soft landscaping, pavements, features, gym, swimming pool(s) and other elements displayed in the brochure, or within the show apartment or between the plot boundary and the unit, are not part of the unit and are shown for illustrative purposes only.



DUBAI CANAL





DAR  
AL ARKAN  
دار الأركان

# LEVELS 31 - 34

## 4 BEDROOM

TOTAL AREA

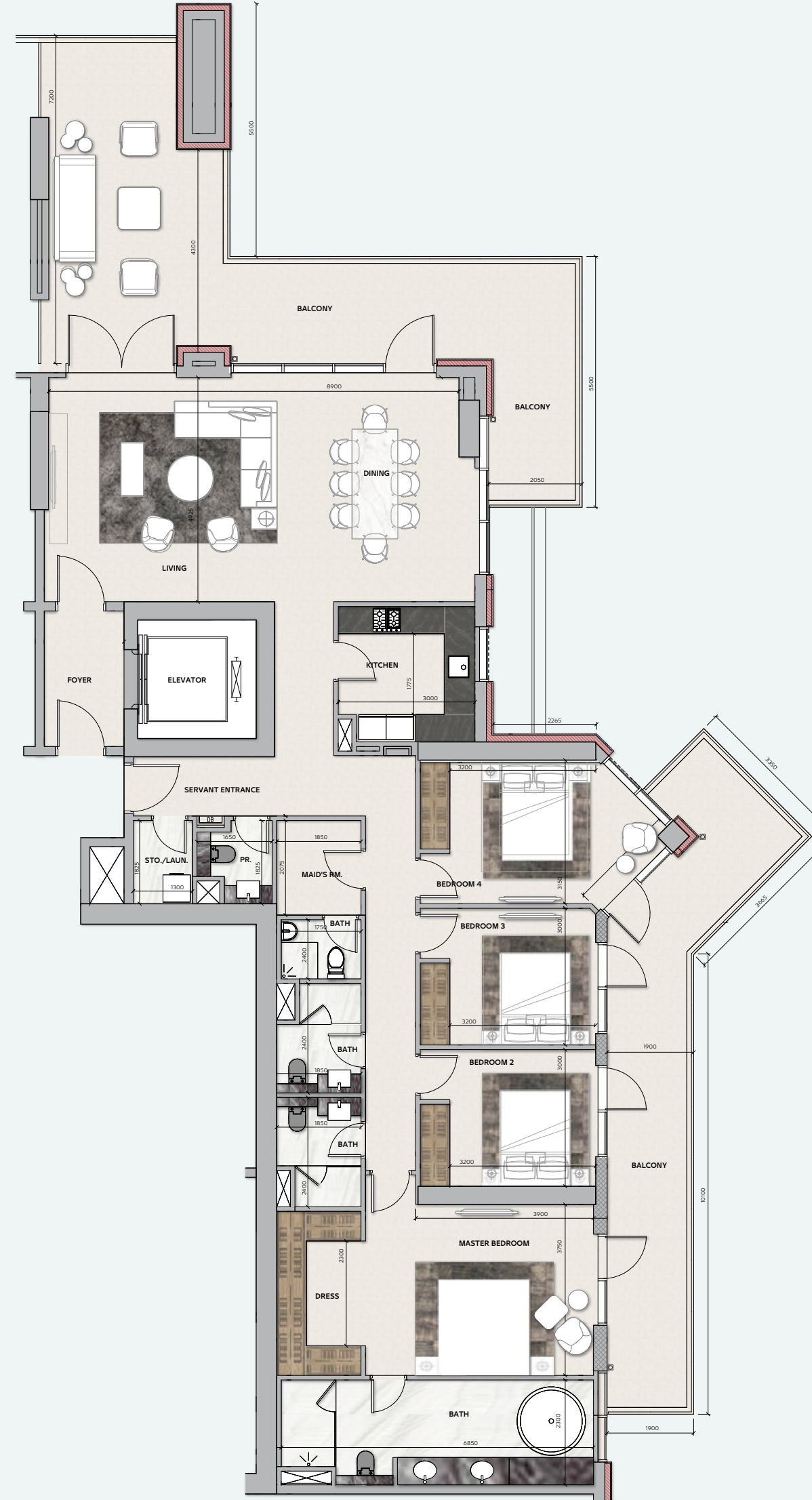
289 sq.m / 3113 sq.ft

UNIT NO

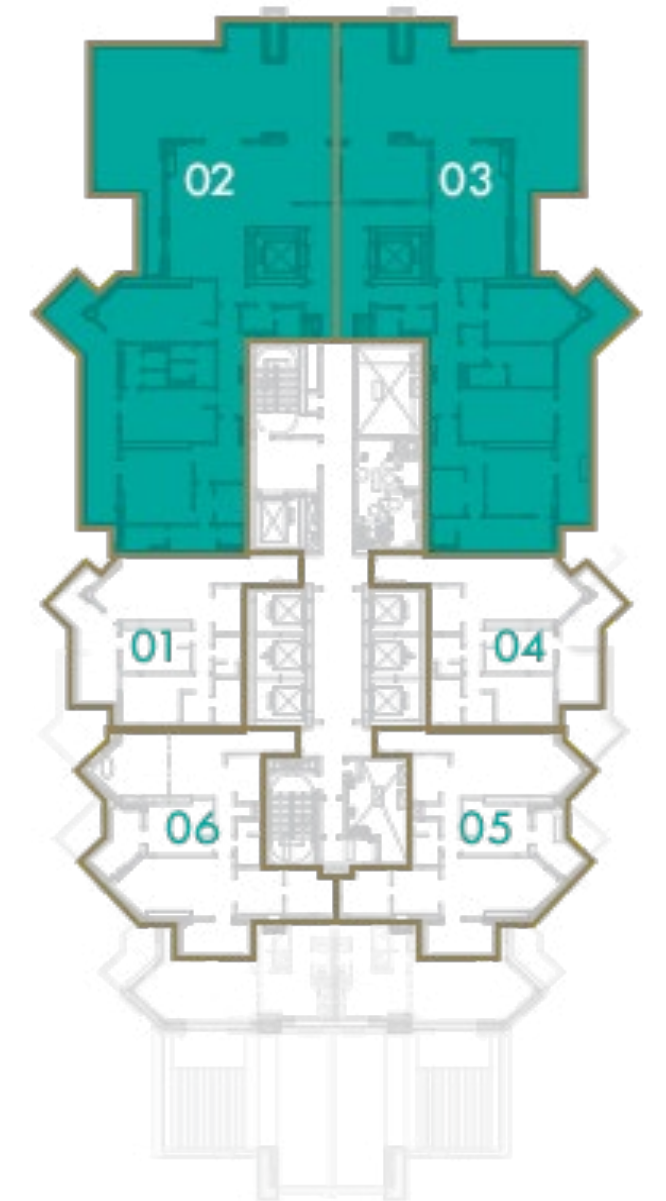
2 & 3

URBAN OASIS BY **MISSONI**

Disclaimer: All pictures, plans, layouts, information, data and details included in this brochure are indicative only and may change at any time up to the final 'as built' status in accordance with final designs of the project, regulatory approvals and planning permissions. All accessories and interior finishes such as wallpaper, chandeliers, furniture, electronics, white goods, curtains, hard and soft landscaping, pavements, features, gym, swimming pool(s) and other elements displayed in the brochure, or within the show apartment or between the plot boundary and the unit, are not part of the unit and are shown for illustrative purposes only.



DUBAI CANAL



CHRISTIE'S  
INTERNATIONAL REAL ESTATE



Office P03, Bay Square 2, Business Bay, P.O. Box: 25129, Dubai, UAE | Tel: +971 4 425 2780  
[www.dubaipremierestates.com](http://www.dubaipremierestates.com)