



ATLANTIS
THE ROYAL
DUBAI

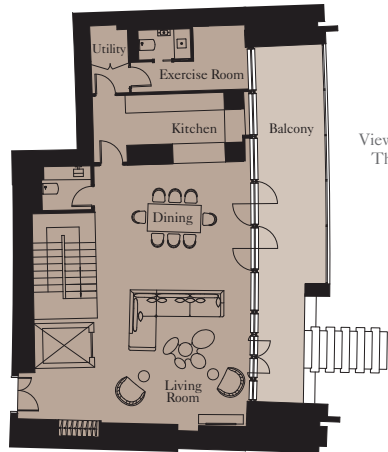
GARDEN SUITE
FLOOR PLANS

2 BEDROOM GARDEN SUITE | TYPE 1

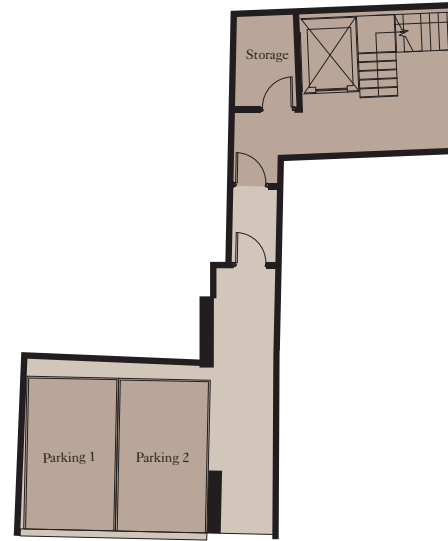
Unit: TH5



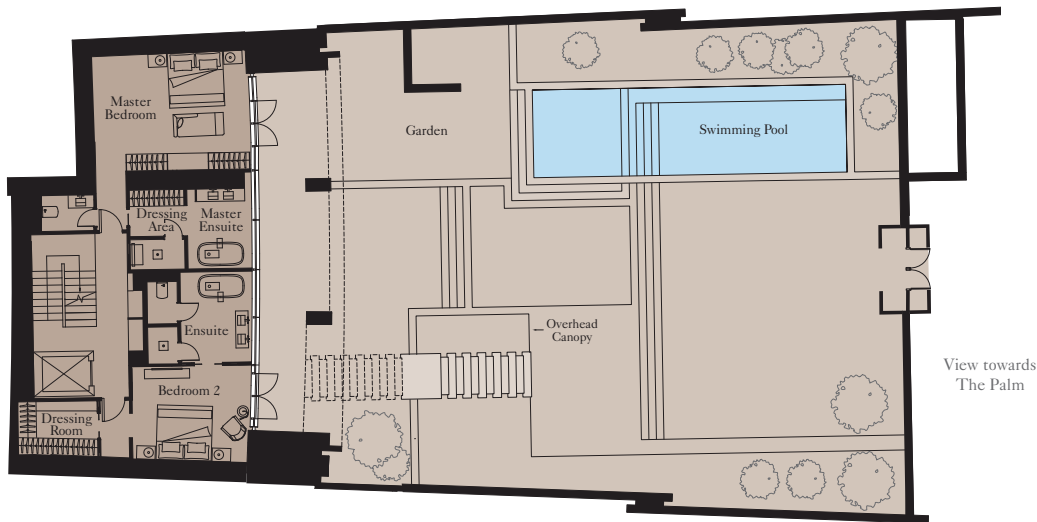
Ground Floor



Basement



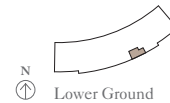
Lower Ground



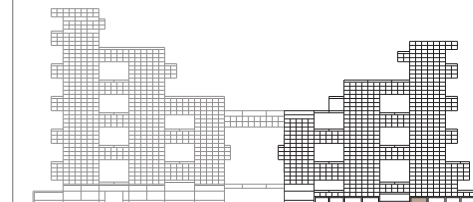
Ground Floor		
Kitchen	4.2m x 2.4m	13'9" x 7'10"
Living/Dining	10.0m x 5.9m	32'10" x 19'4"
Exercise Room	2.5m x 1.7m	8'2" x 5'7"
Lower Ground		
Master Bedroom	5.8m x 3.8m	19'0" x 12'6"
Bedroom 2	4.5m x 3.5m	14'9" x 11'6"
Total Area	334 sq m	3,598 sq ft
Balcony	38 sq m	405 sq ft
Garden	496 sq m	5,335 sq ft



Ground Floor



Lower Ground



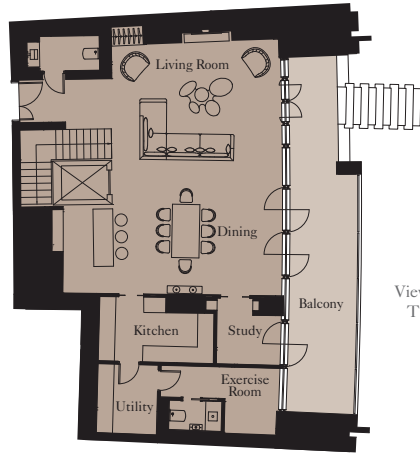
Floor plans shown are for guidance only; they are under regular review and subject to design development. Exact layouts and sizes may change, and sizes may vary within a tolerance of 5%. Furniture layouts are indicative only.

3 BEDROOM GARDEN SUITE | TYPE 2

Unit: TH4

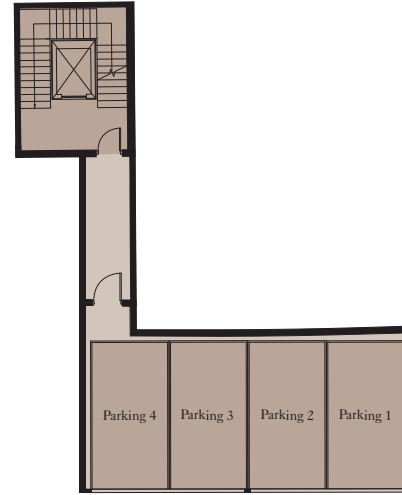


Ground Floor

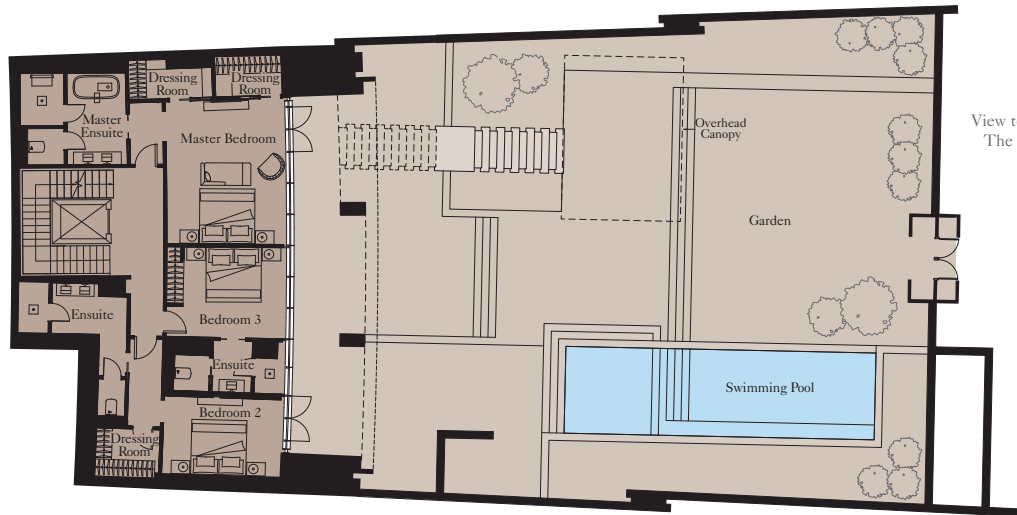


View towards
The Palm

Basement

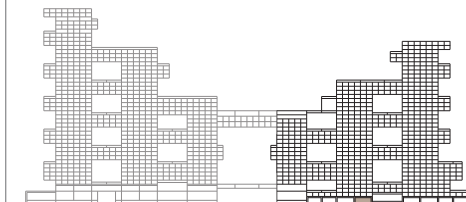
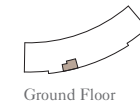


Lower Ground



View towards
The Palm

Ground Floor		
Kitchen	4.4m x 2.5m	14'5" x 8'2"
Living/Dining	10.2m x 5.2m	33'6" x 17'1"
Study	2.4m x 2.4m	7'10" x 7'10"
Exercise Room	2.5m x 2.1m	8'2" x 6'11"
Lower Ground		
Master Bedroom	5.4m x 4.5m	17'9" x 14'9"
Bedroom 2	4.5m x 2.9m	14'9" x 9'6"
Bedroom 3	3.8m x 3.4m	12'6" x 11'2"
Total Area		
	364 sq m	3,921 sq ft
Balcony	38 sq m	405 sq ft
Garden	494 sq m	5,317 sq ft



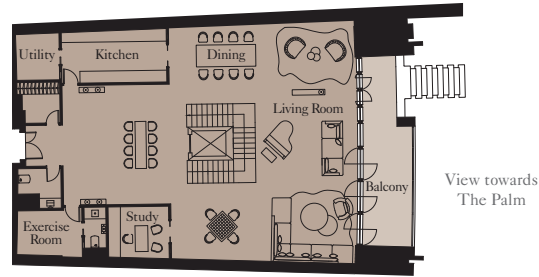
Floor plans shown are for guidance only; they are under regular review and subject to design development. Exact layouts and sizes may change, and sizes may vary within a tolerance of 5%. Furniture layouts are indicative only.

4 BEDROOM GARDEN SUITE | TYPE 3

Unit: TH8



Ground Floor

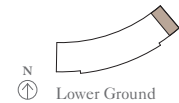
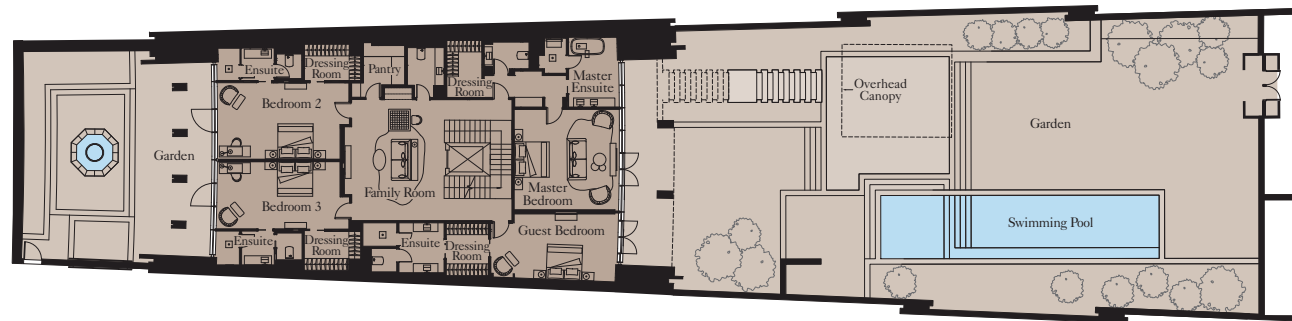


Ground Floor		
Kitchen	5.5m x 2.8m	18'1" x 9'2"
Living Room	9.9m x 6.3m	32'6" x 20'8"
Dining	9.9m x 6.5m	32'6" x 21'4"
Study	3.2m x 2.6m	10'6" x 8'6"
Exercise Room	3.4m x 2.4m	11'2" x 7'10"

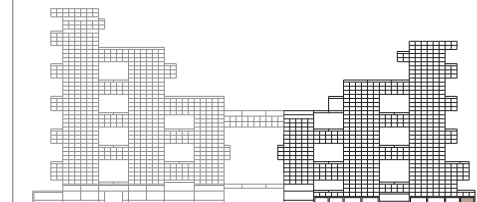
Lower Ground		
Family Room	6.4m x 4.8m	21'0" x 15'9"
Master Bedroom	5.4m x 5.3m	17'9" x 17'5"
Bedroom 2	6.4m x 3.5m	21'0" x 11'6"
Bedroom 3	6.4m x 4.0m	21'0" x 13'1"
Guest Bedroom	6.7m x 3.5m	22'0" x 11'6"

Total Area	554 sq m	5,966 sq ft
Balcony	29 sq m	316 sq ft
Gardens	696 sq m	7,490 sq ft

Lower Ground



Floor plans shown are for guidance only; they are under regular review and subject to design development. Exact layouts and sizes may change, and sizes may vary within a tolerance of 5%. Furniture layouts are indicative only.

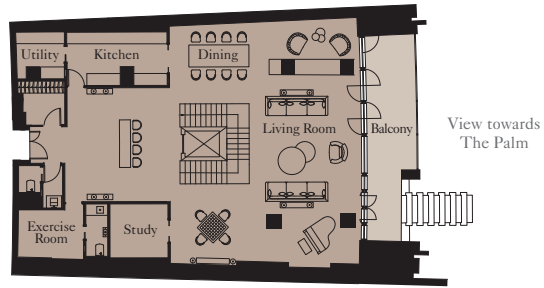


4 BEDROOM GARDEN SUITE | TYPE 4

Unit: TH7



Ground Floor

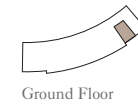
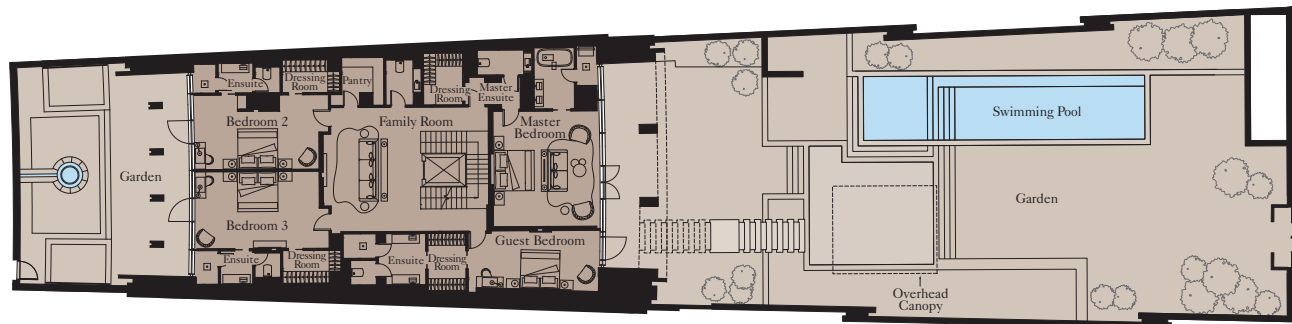


Ground Floor		
Kitchen	5.4m x 2.7m	17'9" x 8'10"
Living Room	9.9m x 6.3m	32'6" x 20'8"
Dining	9.9m x 6.4m	32'6" x 21'1"
Exercise Room	3.4m x 2.5m	11'2" x 8'2"

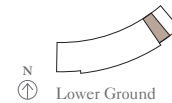
Lower Ground		
Family Room	6.5m x 4.6m	21'4" x 15'1"
Master Bedroom	6.1m x 5.6m	20'0" x 18'4"
Bedroom 2	6.5m x 3.8m	21'4" x 12'6"
Bedroom 3	6.5m x 4.0m	21'4" x 13'1"
Guest Bedroom	7.0m x 3.0m	23'0" x 9'10"

Total Area	553 sq m	5,957 sq ft
Balcony	29 sq m	311 sq ft
Gardens	696 sq m	7,496 sq ft

Lower Ground



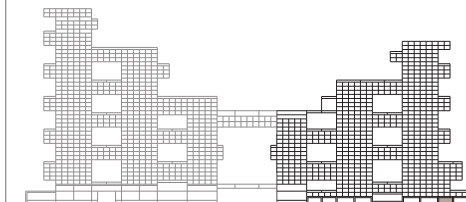
Ground Floor



Lower Ground



Floor plans shown are for guidance only; they are under regular review and subject to design development. Exact layouts and sizes may change, and sizes may vary within a tolerance of 5%. Furniture layouts are indicative only.

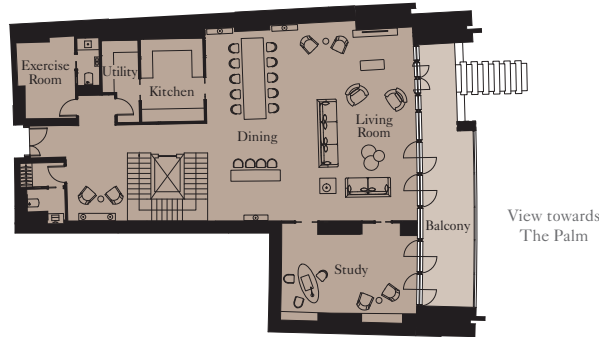


4 BEDROOM GARDEN SUITE | TYPE 5

Unit: TH6

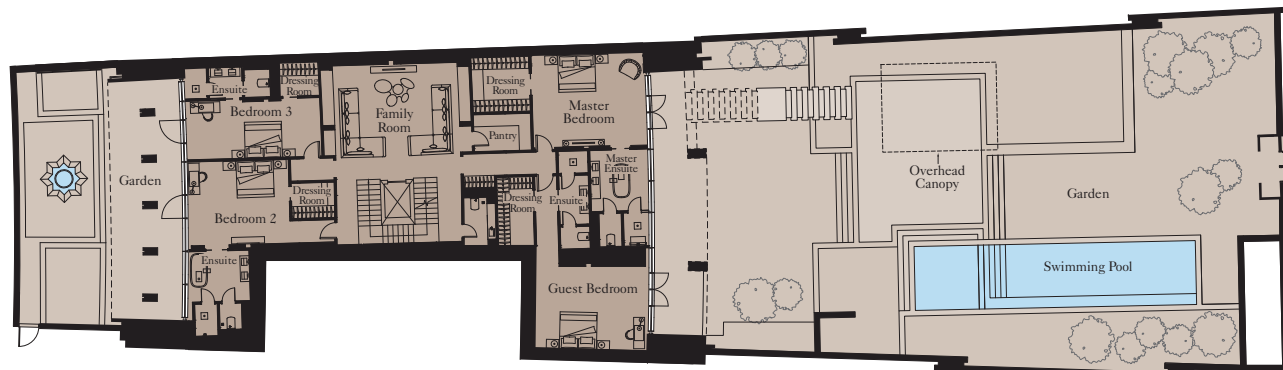


Ground Floor



View towards
The Palm

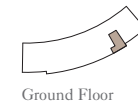
Lower Ground



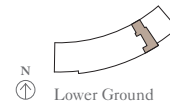
Ground Floor		
Kitchen	4.2m x 3.3m	13'9" x 10'10"
Living Room	9.9m x 6.0m	32'6" x 19'8"
Dining	9.9m x 5.0m	32'6" x 16'5"
Study	5.9m x 4.3m	19'4" x 14'1"

Lower Ground		
Family Room	6.5m x 5.7m	21'4" x 18'8"
Master Bedroom	5.9m x 4.8m	19'4" x 15'9"
Bedroom 2	5.1m x 4.4m	16'9" x 14'5"
Bedroom 3	7.1m x 2.9m	23'4" x 9'6"
Guest Bedroom	5.8m x 4.2m	19'0" x 13'9"
Exercise Room	4.0m x 2.6m	13'1" x 8'6"

Total Area	609 sq m	6,557 sq ft
Balcony	38 sq m	405 sq ft
Gardens	745 sq m	8,023 sq ft



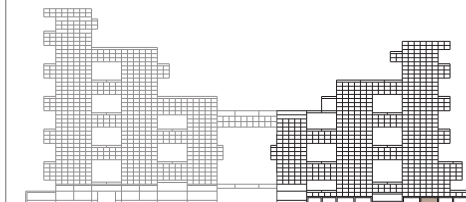
Ground Floor



Lower Ground



Floor plans shown are for guidance only; they are under regular review and subject to design development. Exact layouts and sizes may change, and sizes may vary within a tolerance of 5%. Furniture layouts are indicative only.

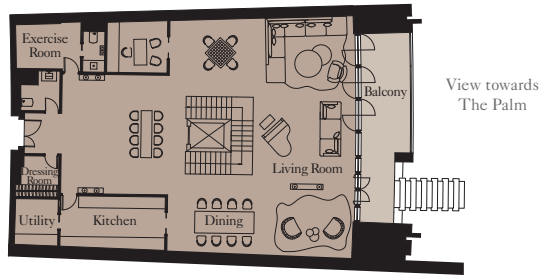


4 BEDROOM GARDEN SUITE | TYPE 6

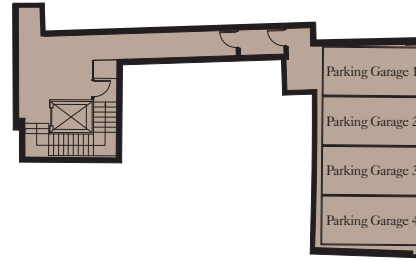


Unit: TH1

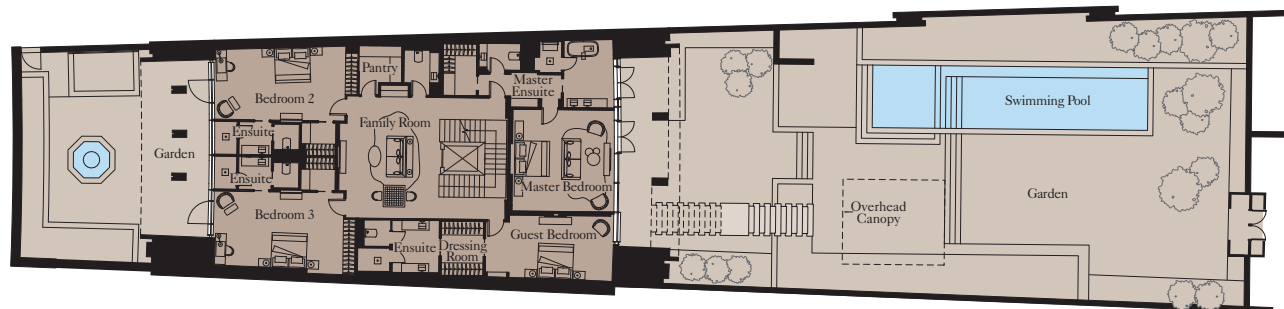
Ground Floor



Basement



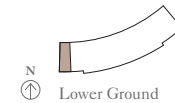
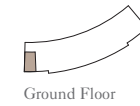
Lower Ground



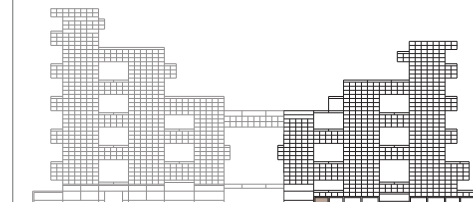
Ground Floor		
Kitchen	5.6m x 2.7m	18'4" x 8'10"
Living Room	9.9m x 6.3m	32'6" x 20'8"
Dining	9.9m x 6.3m	32'6" x 20'8"
Study	3.1m x 2.6m	10'2" x 8'6"
Exercise Room	3.5m x 2.4m	11'6" x 7'10"

Lower Ground		
Family Room	6.4m x 4.9m	21'0" x 16'1"
Master Bedroom	5.4m x 5.4m	17'9" x 17'9"
Bedroom 2	6.9m x 4.0m	22'8" x 13'1"
Bedroom 3	6.9m x 3.8m	22'8" x 12'6"
Guest Bedroom	5.4m x 3.4m	17'9" x 11'2"

Total Area	614 sq m	6,606 sq ft
Balcony	27 sq m	288 sq ft
Gardens	696 sq m	7,496 sq ft



Floor plans shown are for guidance only; they are under regular review and subject to design development. Exact layouts and sizes may change, and sizes may vary within a tolerance of 5%. Furniture layouts are indicative only.

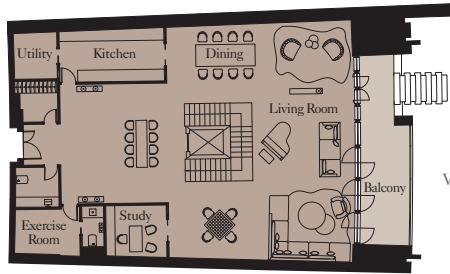


4 BEDROOM GARDEN SUITE | TYPE 7

Unit: TH2

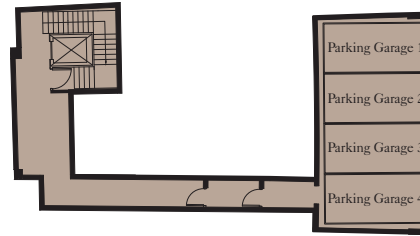


Ground Floor

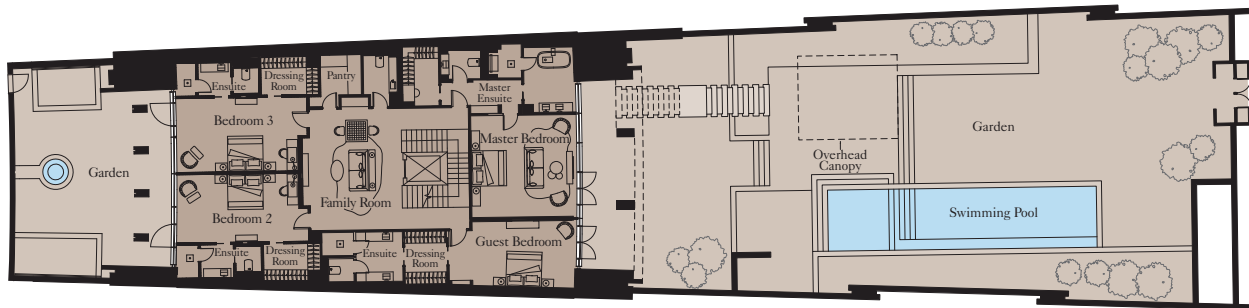


View towards
The Palm

Basement



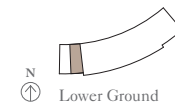
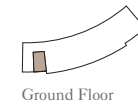
Lower Ground



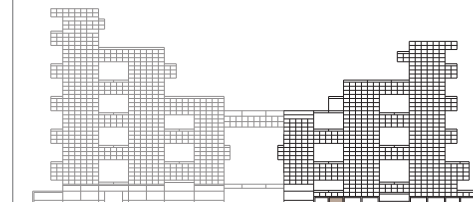
Ground Floor		
Kitchen	5.5m x 2.7m	18'1" x 8'10"
Living Room	9.9m x 6.3m	32'6" x 20'8"
Dining	9.9m x 6.4m	32'6" x 21'0"
Study	2.7m x 2.7m	8'10" x 8'10"
Exercise Room	3.4m x 2.4m	11'2" x 7'10"

Lower Ground		
Family Room	6.4m x 4.8m	21'0" x 15'9"
Master Bedroom	5.6m x 5.4m	18'4" x 17'9"
Bedroom 2	7.1m x 3.9m	23'4" x 12'10"
Bedroom 3	7.1m x 3.8m	23'4" x 12'6"
Guest Bedroom	6.7m x 3.4m	22'0" x 11'2"

Total Area	617 sq m	6,645 sq ft
Balcony	29 sq m	312 sq ft
Gardens	694 sq m	7,475 sq ft



Floor plans shown are for guidance only; they are under regular review and subject to design development. Exact layouts and sizes may change, and sizes may vary within a tolerance of 5%. Furniture layouts are indicative only.



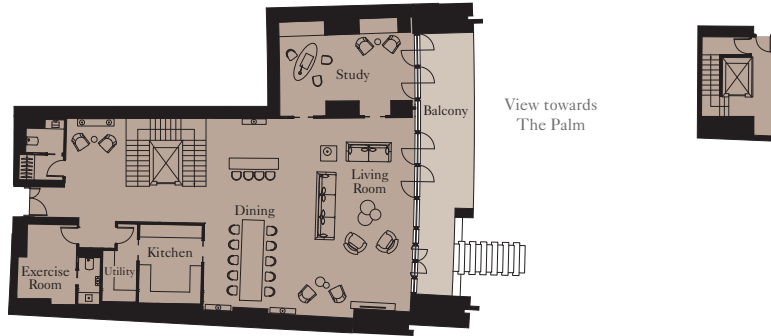
4 BEDROOM GARDEN SUITE | TYPE 8



Unit: TH3

Ground Floor

Basement

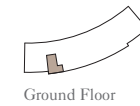
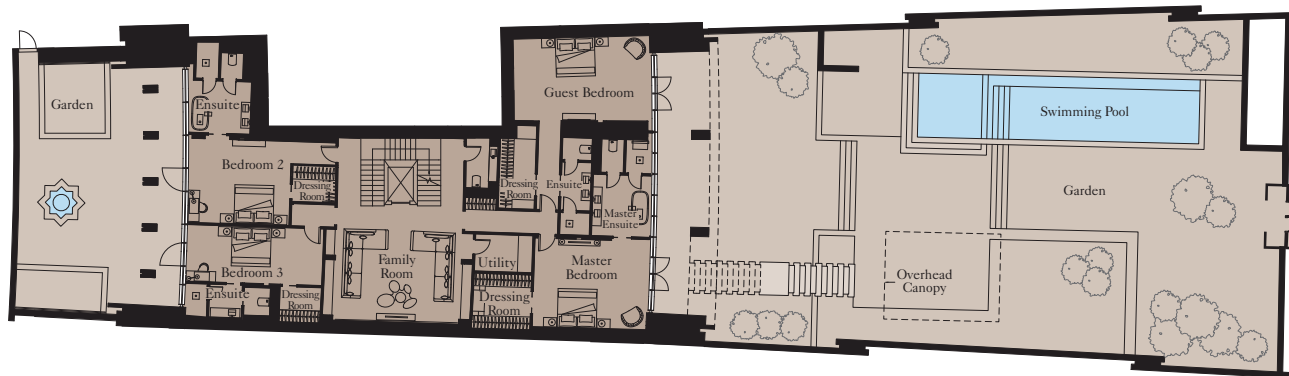


Ground Floor		
Kitchen	4.1m x 3.3m	13'5" x 10'10"
Living Room	10.0m x 7.0m	32'10" x 23'0"
Dining	9.8m x 4.1m	32'2" x 13'5"
Study	7.1m x 4.4m	23'4" x 14'5"
Exercise Room	4.0m x 2.6m	13'1" x 8'6"

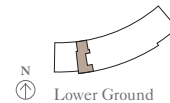
Lower Ground		
Family Room	6.6m x 5.8m	21'8" x 19'0"
Master Bedroom	5.9m x 4.7m	19'4" x 15'5"
Bedroom 2	5.3m x 4.2m	17'5" x 13'9"
Bedroom 3	7.0m x 2.8m	23'0" x 9'2"
Guest Bedroom	7.0m x 4.3m	23'0" x 14'1"

Total Area	654 sq m	7,045 sq ft
Balcony	38 sq m	405 sq ft
Gardens	748 sq m	8,050 sq ft

Lower Ground



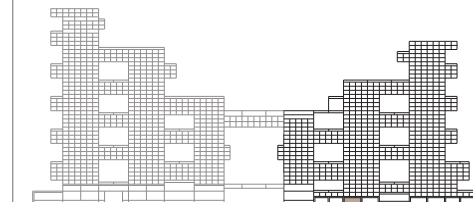
Ground Floor



Lower Ground



Floor plans shown are for guidance only; they are under regular review and subject to design development. Exact layouts and sizes may change, and sizes may vary within a tolerance of 5%. Furniture layouts are indicative only.





ATLANTIS

THE ROYAL

DUBAI