



PREMIER ESTATES

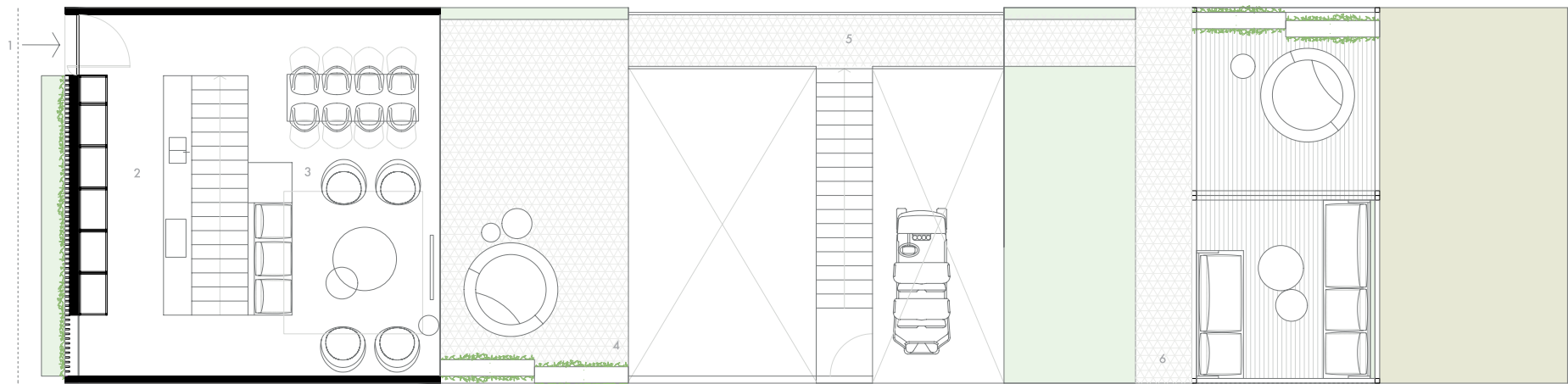
SWITZERLAND

THE HEART OF EUROPE

Floor Plans

2 BEDROOM CHALET

Gross Area: 131.20m²
Terraces Area: 149.04m²

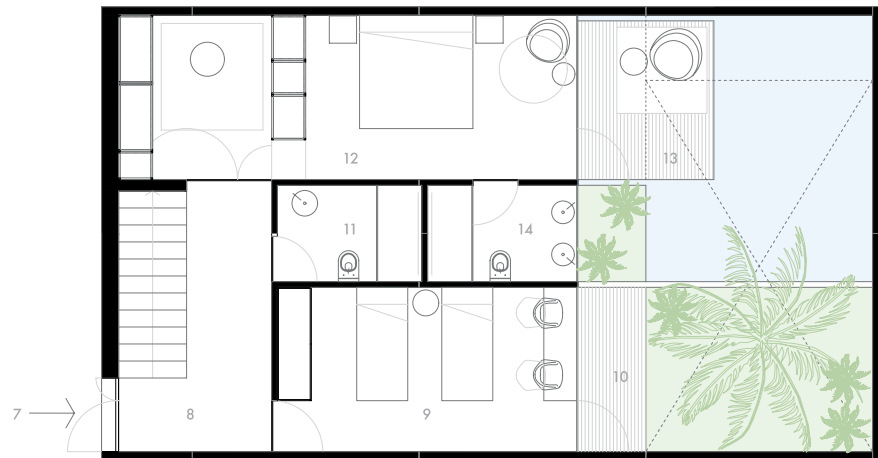


UPPER LEVEL

Total GFA: 64,00 m²
Terraces: 105,37m²

Owner's Areas:

- 1 street access
- 2 open kitchen 22.46m²
- 3 living area 31.28m²
- 4 terrace 31.72m²
- 5 open air corridor 13.22m²
- 6 front terrace 48.76m²



LOWER LEVEL

Total GFA: 67,20 m²
Terraces: 44,03 m²

Owner's Areas:

- 7 service access
- 8 lower level hall 16.61m²
- 9 double bedroom 15.43m²
- 10 terrace 15.55m²
- 11 bathroom 4.39m²
- 12 master bedroom 23.31m²
- 13 terrace 24.44m²
- 14 master bathroom 5.33m²

3 SUITE BEACH FRONT VILLA

Type A

Gross Area: 563.82m²
Terraces Area: 561.55m²



BEACH LEVEL + 2.90

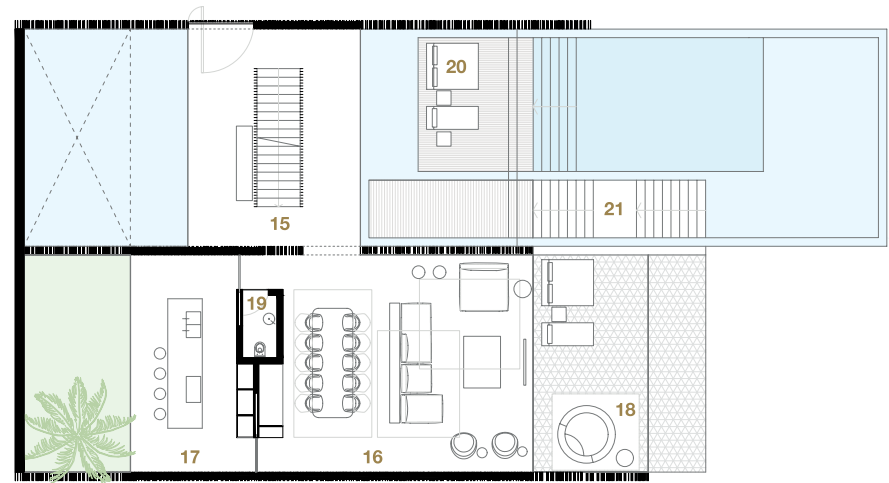
Total GFA: 203,35m²
Terraces: 162,24m²

Owner's Areas:

- 1 beach access
- 2 access hall
- 3 lower level hall 64.91m²
- 4 wine cellar 15.22m²
- 5 gym 45.76m²
- 6 fitness terrace 22.58m²
- 7 sun deck 18.63m²
- 8 toilet 10.02m²
- 9 technical room 25.17m²
- 11 laundry room 7.45m²
- 12 maid room 10.17m²
- 13 toilet 4.59 m²
- 14 service access

Service Area:

- 10 service corridor 15.68m²

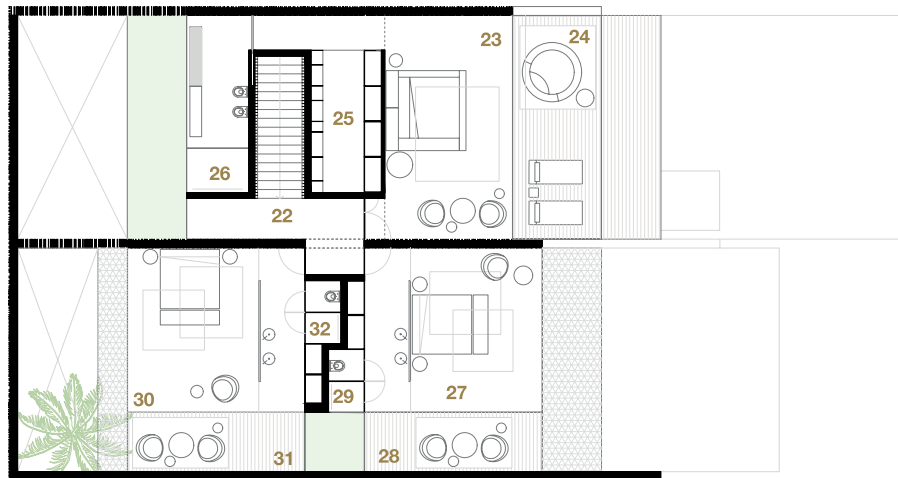


MAIN LEVEL + 5.20

Total GFA: 160,83 m²
Terraces & Pool: 266,50 m²

Owner's Areas:

- 15 access hall 21.44m²
- 16 living area 136.61m²
- 17 kitchen 71.54m²
- 18 front terrace 21.54m²
- 19 toilet 9.89m²
- 20 pool area 52.76m²
- 21 access platform 26.83m²



UPPER LEVEL + 8.50

Total GFA: 199,64m²

Terraces: 132,81 m²

Owner's Areas:

22 access hall

23 suite beach view 31.11m²

24 terrace 13.28m²

25 changing room 17.26m²

26 bathroom 11.95m²

27 suite beach view 37.47m²

28 terrace 11.03m²

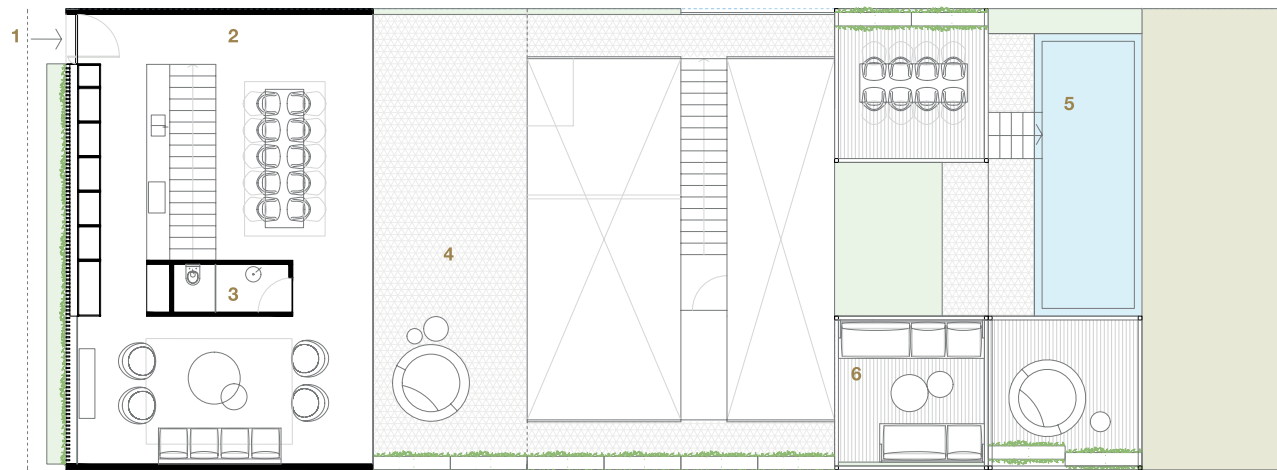
29 toilet 7.26m²

30 suite 31.95m²

31 terrace 11.67m²

3 BEDROOM CHALET

Gross Area: 201.25m²
Terraces Area: 299.77m²

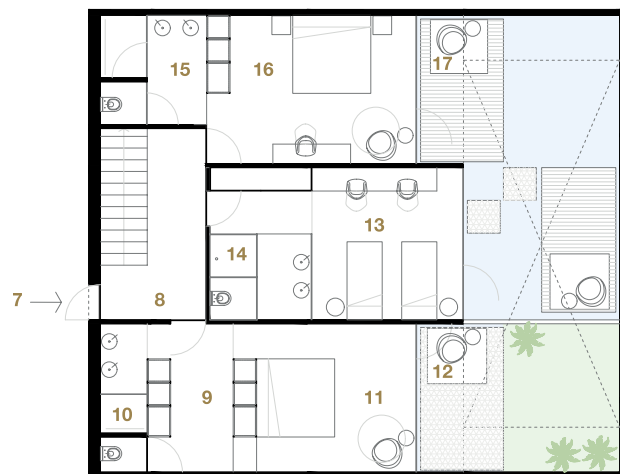


UPPER LEVEL

Total GFA: 95,87 m²
Terraces: 238,91m²

Owner's Areas:

- 1 main access
- 2 living area 77.91m²
- 3 toilet 8.91m²
- 4 terrace 75.10m²
- 5 pool 20.76m²
- 6 front terrace 72.15m²



LOWER LEVEL

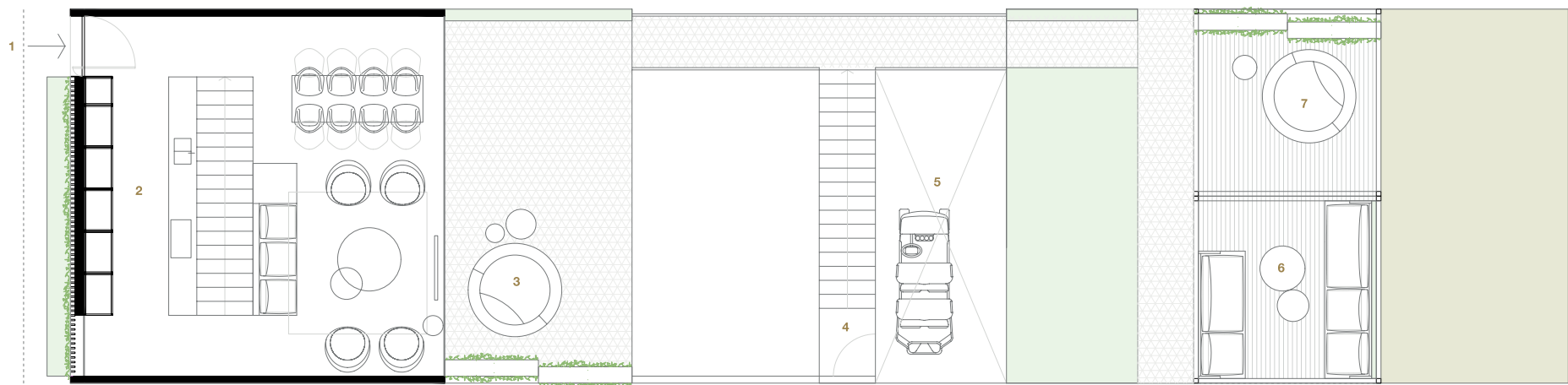
Total GFA: 105,38m²
Terraces & Pool: 60,86 m²

Owner's Areas:

- 7 access
- 8 access hall 14.61m²
- 9 wc 11.54m²
- 10 bathroom 9.54m²
- 11 master bedroom 16.89m²
- 12 patio 14.76m²
- 13 bedroom 12.83m²
- 14 bathroom 8.14m²
- 15 master bathroom 11.44m²
- 16 master bedroom 13.05m²
- 17 patio 29.05m²

3 BEDROOM CHALET

Gross Area: 201.47m²
Terraces Area: 347.11m²

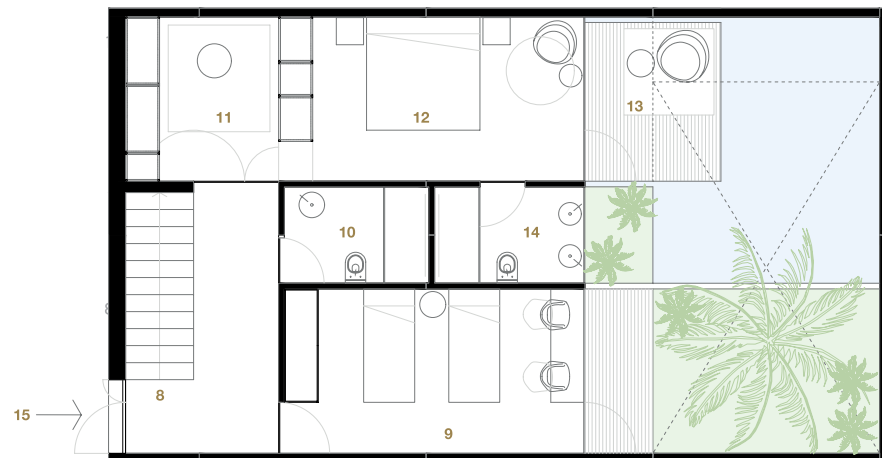


UPPER LEVEL

Total GFA: 64,00 m²
Terraces: 191,99m²

Owner's Areas:

- 1 access
- 2 living area 59.01m²
- 3 terrace 84.91m²
- 4 access hall 10.22m²
- 5 private buggie parking 13.22m²
- 6 terrace 18.76m²
- 7 terrace 16.58m²



LOWER LEVEL

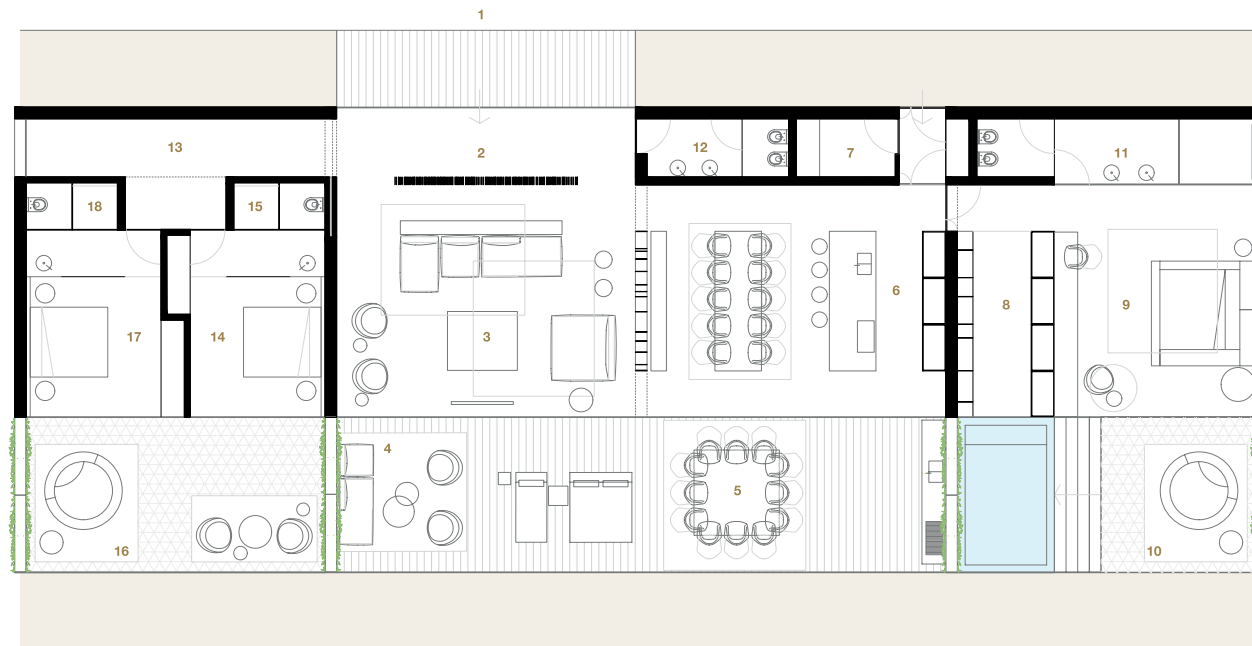
Total GFA: 67,02m²
Terraces & Pool: 44,03 m²

Owner's Areas:

- 8** access hall 16.61m²
- 9** bedroom 14.41m²
- 10** toilet 4.34m²
- 11** changing room 11.54m²
- 12** master bedroom 14.89m²
- 13** terrace 41.76m²
- 14** toilet 4.33m²
- 15** access

3 BEDROOM CLIFF CHALET

Gross Area: 258.68m²
Terraces Area: 127.92m²



FLOOR PLAN

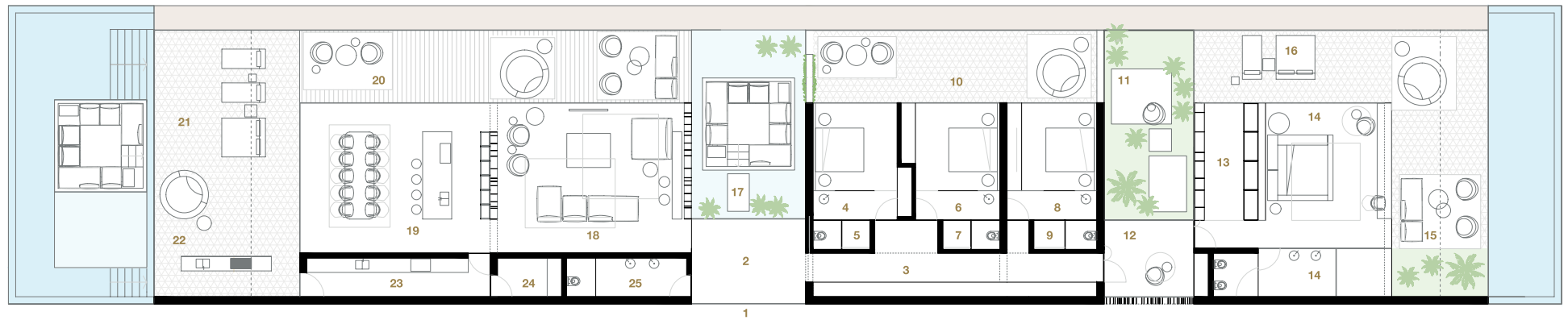
Total GFA: 258,68 m²
Terraces: 127,92m²

Owner's Areas:

- 1 access
- 2 access hall 14.91m²
- 3 living area 84.91m²
- 4 terrace with bbq 25.22m²
- 5 terrace 30.76m²
- 6 kitchen area 66.58m²
- 7 toilet 3.63m²
- 8 changing room 9.00m²
- 9 bedroom 35.17m²
- 10 pool area 17.68m²
- 11 toilet 11.45m²
- 12 toilet 6.17m²
- 13 corridor 8.59 m²
- 14 bedroom 9.18m²
- 15 toilet 3.61m²
- 16 terrace 25.12m²
- 17 bedroom 9.61m²
- 18 toilet 3.12m²

4 BEDROOM CLIFF PENTHOUSE

Gross Area: 300.98m²
Terraces Area: 424.99m²



FLOORPLAN

Total GFA: 300,98 m²
Terraces: 424,99m²

Owner's Areas:

- | | |
|---|--|
| 1 access | 14 suite 36.18m ² |
| 2 access hall 11.91m ² | 15 pool area 40.61m ² |
| 3 corridor 15.91m ² | 16 sun deck 25.12m ² |
| 4 bedroom 10.22m ² | 17 lounge area 35.59 m ² |
| 5 toilet 5.76m ² | 18 living area 34.18m ² |
| 6 bedroom 10.58m ² | 19 kitchen area 30.61m ² |
| 7 toilet 5.63m ² | 20 terrace 25.12m ² |
| 8 bedroom 10.00m ² | 21 pool area 45.12m ² |
| 9 toilet 5.17m ² | 22 bbq area 24.59 m ² |
| 10 terrace 85.68m ² | 23 kitchen area 6.18m ² |
| 11 patio 13.45m ² | 24 laundry area 4.61m ² |
| 12 patio 10.17m ² | 25 toilet 5.12m ² |
| 13 changing room 9.59 m ² | |

5 SUITE BEACH FRONT VILLA

Type A

Gross Area: 1231.48m²

Terraces Area: 846.81m²



BEACH LEVEL + 2.90

Total GFA: 652,81 m²

Terraces: 72,95 m²

Owner's Areas:

- 1 beach access
- 2 access hall
- 3 lower level hall 54.90 m²
- 4 family room 91.22m²
- 5 wine cellar 15m²
- 6 toilet 10.76m²
- 7 elevator
- 8 corridor 15.70m²
- 9 guest beach suite 53.37m²
- 10 terrace 34.15m²
- 11 gym access 7.56m²
- 12 gym 71.23m²
- 13 sauna / steam room 16.08m²

- 14 water sports garage 54.16m²
- 15 private buggie parking 45.94m²
- 16 technical room 33.45m²

Service Area:

- 17 service corridor 37.25m²
- 18 laundry room 12.59m²
- 19 kitchen corridor 7.32m²
- 20 service kitchen 59.1m²
- 21 storage 6.89m²
- 22 cold storage 5.13m²
- 23 service room 12.00m²
- 24 service toilet 3.06m²
- 25 service room 12.00m²
- 26 courtyard 38.08m²



MAIN LEVEL + 5.20

Total GFA: 388,80 m²

Terraces & Pool: 581,09 m²

Owner's Areas:

- 27 access platform 15.70m²
- 28 pool area 153.84m²
- 29 access hall 46.62m²
- 30 courtyard majlis 98.17m²
- 31 toilet 10.76 m²
- 32 elevator 91.22m²
- 33 living area 124.90m²
- 34 front terrace 38.34m²
- 35 side terrace with bbq 60.40m²
- 36 suite with patio 56.38m²
- 37 patio 37.90m²
- 38 pool suite beach view 53.37m²
- 39 terrace 34.10m²

40 suite with patio 56.93m²

41 patio 41.71m²

Service Area:

42 service stairs 18.05m²



UPPER LEVEL + 8.50

Total GFA 189,87 m²
Terraces 192,77 m²

Owner's Areas:

- 43 upper hall 46.70 m²
- 44 panoramic corridor 15.50 m²
- 45 toilet 10.76 m²
- 46 elevator 91.22m²
- 52 panorama terrace 121.89m²
- 53 panorama pool 7.56m²
- 54 storage 4.44m²

Ocean View Master Suite :

- 47 wic 31.98m²
- 48 master bedroom 60.24m²
- 49 terrace 30.76m²

50 master bathroom 25.86m²

51 outdoor jacuzzi 17.40 m²

Service Area:

55 service stairs 17.25m²

5 BEDROOM BEACH FRONT VILLA

Type A

Gross Area: 872.28m²
Terraces Area: 780.50m²



BEACH LEVEL + 2.90

Total GFA: 212,96 m²
Terraces: 325,53m²

Owner's Areas:

- 1 beach access
- 2 access hall
- 3 lower level hall 28.91m²
- 4 wine cellar 15.22m²
- 5 toilet 10.76m²
- 6 gym 56.58m²
- 7 fitness terrace 58.63m²
- 8 sun deck 50.00m²
- 9 water sports garage 45.17m²
- 10 sun deck 85.68m²
- 11 technical room 33.45m²

Service Area:

- 12 service corridor 10.17m²
- 13 laundry room 4.59 m²
- 14 service toilet 4.18m²
- 15 maid room 10.61m²
- 16 service kitchen 25.12m²



MAIN LEVEL + 5.20

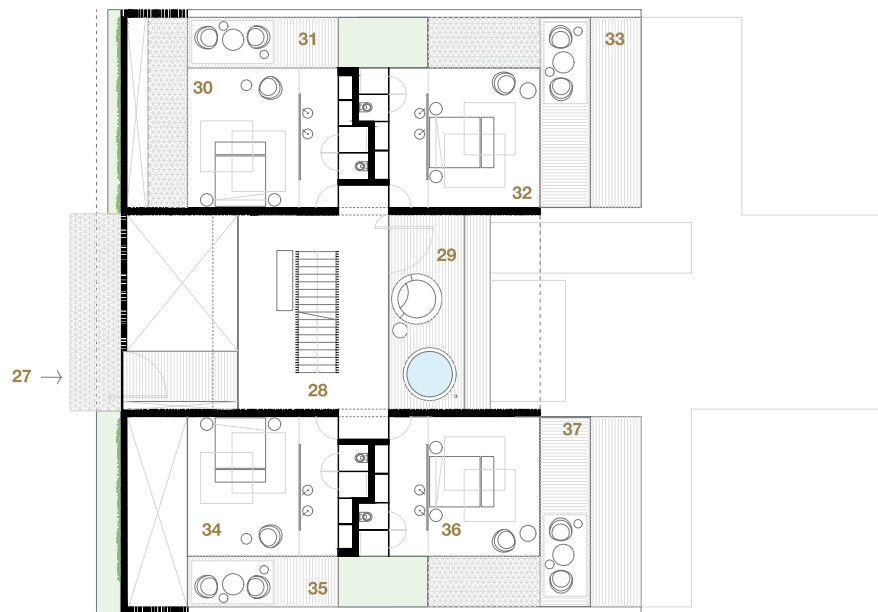
Total GFA: 297,74 m²
Terraces & Pool: 323,98 m²

Owner's Areas:

- 17 access hall 21.44m²
- 18 living area 106.61m²
- 19 front terrace 71.54m²
- 20 access platform
- 21 pool area 153.89m²
- 22 toilet 10.76m²

Pool Master Suite:

- 23 changing room 26.83m²
- 24 bathroom with patio 60.14m²
- 25 master suite beach view 86.44m²
- 26 terrace 30.05m²



UPPER LEVEL + 8.50

Total GFA: 316,58m²

Terraces: 130,99 m²

Owner's Areas:

- 27 street level access
- 28 access hall 31.11m²
- 29 panorama terrace 23.28m²
- 30 suite 37.26m²
- 31 terrace 11.95m²
- 32 suite beach view 37.47m²
- 33 terrace 39.03m²
- 34 suite 37.26m²
- 35 terrace 11.95m²
- 36 suite beach view 31.67m²
- 37 terrace 39.03m²