



PREMIER ESTATES

# ARABIAN RANCHES III

---

SUN

FLOOR PLANS

EMAAR



# ARABIAN RANCHES III

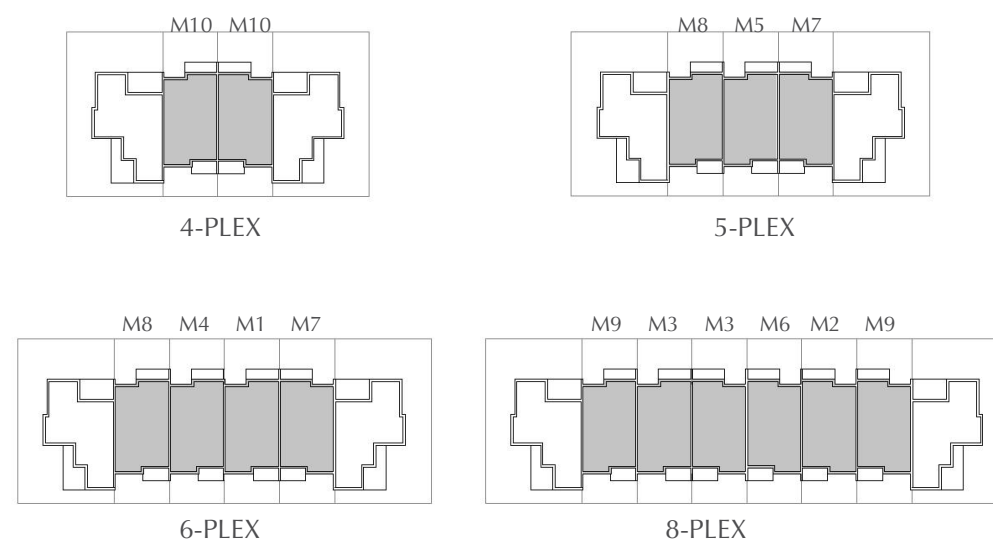
## SUN

### 3 BEDROOM TOWNHOUSE

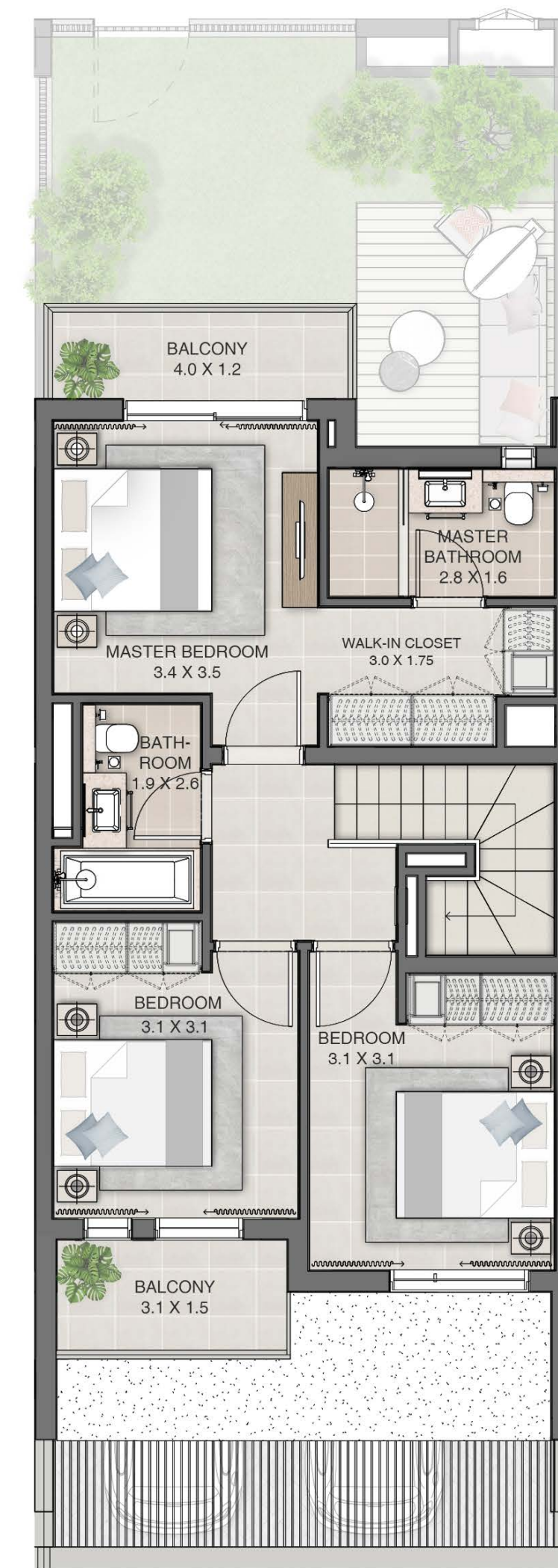
#### UNIT TYPE 1 MIDDLE

M1	1937 SQ.FT.	179.98 SQ.M.
M2	1937 SQ.FT.	179.99 SQ.M.
M3	1938 SQ.FT.	180.03 SQ.M.
M4	1938 SQ.FT.	180.03 SQ.M.
M5	1939 SQ.FT.	180.14 SQ.M.
M6	1939 SQ.FT.	180.18 SQ.M.
M7	1939 SQ.FT.	180.18 SQ.M.
M8	1940 SQ.FT.	180.23 SQ.M.
M9	1941 SQ.FT.	180.30 SQ.M.
M10	1941 SQ.FT.	180.35 SQ.M.

#### KEY PLAN



GROUND LEVEL



FIRST LEVEL

FLOOR PLAN 1. All dimensions are in imperial and metric, and measured from finish to finish excluding construction tolerances. 2. All materials, dimensions, and drawings are approximate only. 3. Information is subject to change without notice, at developer's absolute discretion. 4. Actual area may vary from the stated area. 5. Drawings not to scale. 6. All images used are for illustrative purposes only and do not represent the actual size, features, specifications, fittings, and furnishings. 7. The developer reserves the right to make revisions / alterations, at it's absolute discretion, without any liability whatsoever.



# ARABIAN RANCHES III

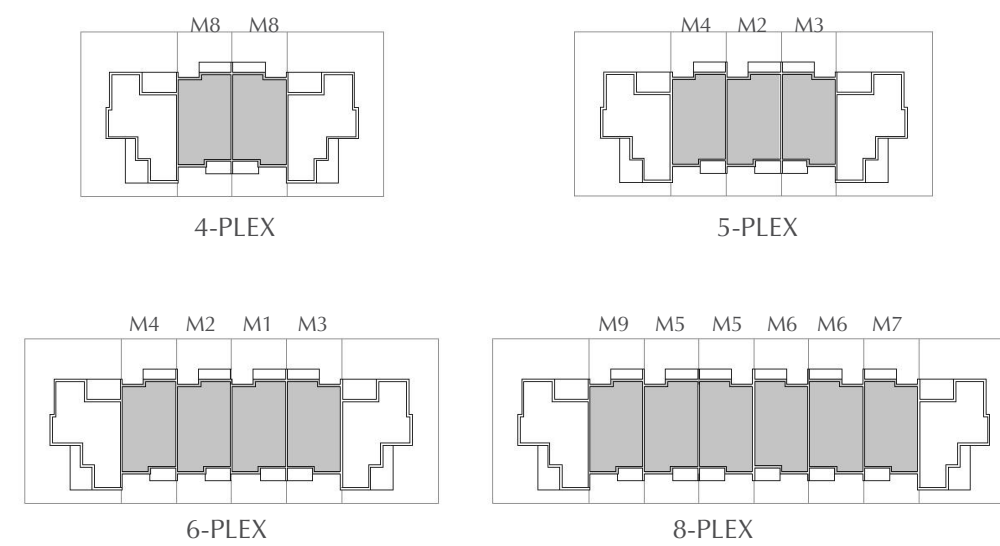
## SUN

### 3 BEDROOM TOWNHOUSE

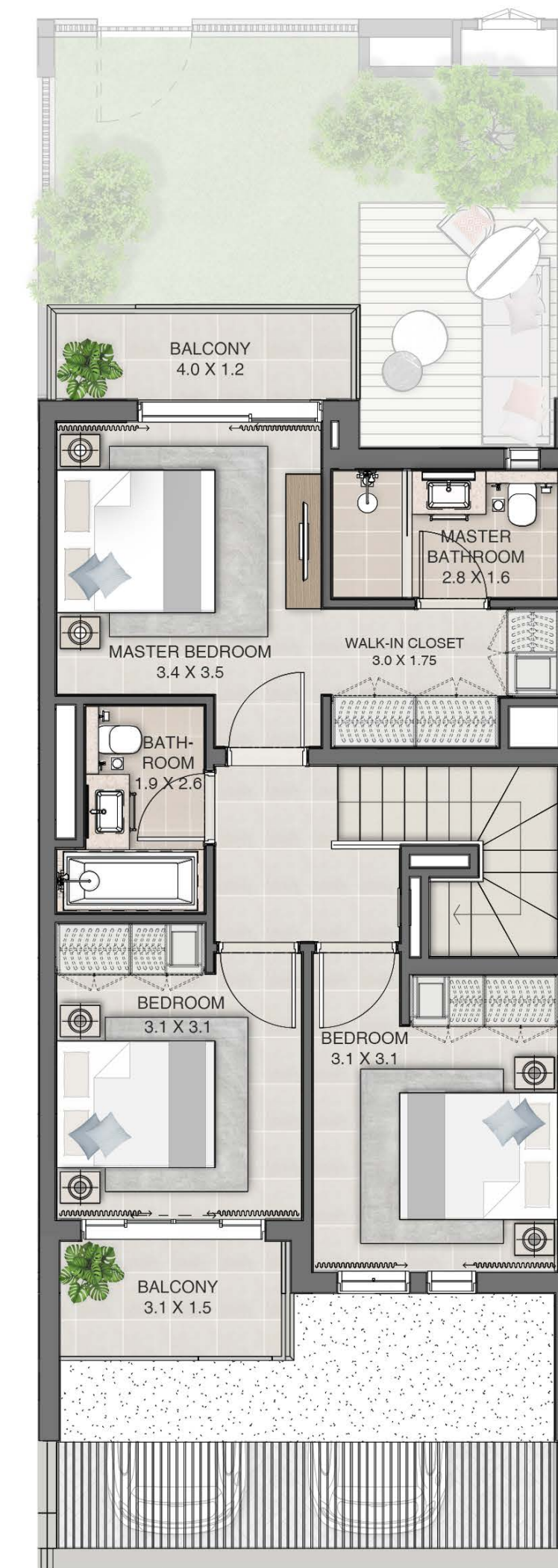
#### UNIT TYPE 2 MIDDLE

M1	1938 SQ.FT.	180.06 SQ.M.
M2	1939 SQ.FT.	180.11 SQ.M.
M3	1939 SQ.FT.	180.18 SQ.M.
M4	1940 SQ.FT.	180.23 SQ.M.
M5	1941 SQ.FT.	180.33 SQ.M.
M6	1942 SQ.FT.	180.37 SQ.M.
M7	1943 SQ.FT.	180.47 SQ.M.
M8	1943 SQ.FT.	180.50 SQ.M.
M9	1944 SQ.FT.	180.56 SQ.M.

#### KEY PLAN



GROUND LEVEL



FIRST LEVEL

FLOOR PLAN 1. All dimensions are in imperial and metric, and measured from finish to finish excluding construction tolerances. 2. All materials, dimensions, and drawings are approximate only. 3. Information is subject to change without notice, at developer's absolute discretion. 4. Actual area may vary from the stated area. 5. Drawings not to scale. 6. All images used are for illustrative purposes only and do not represent the actual size, features, specifications, fittings, and furnishings. 7. The developer reserves the right to make revisions / alterations, at it's absolute discretion, without any liability whatsoever.



# ARABIAN RANCHES III

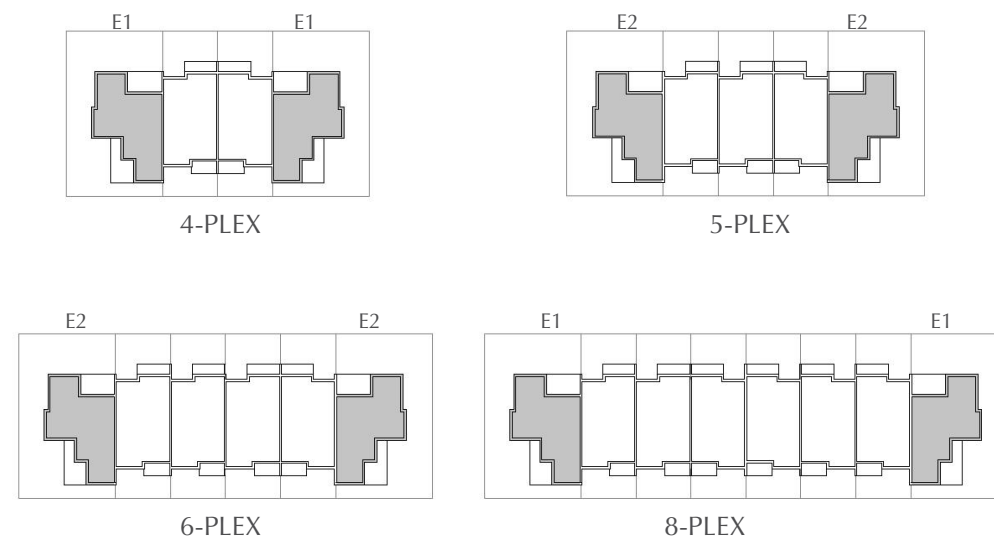
SUN

## 4 BEDROOM TOWNHOUSE

UNIT TYPE 1 END

E1	2439 SQ.FT.	226.60 SQ.M.
E2	2439 SQ.FT.	226.61 SQ.M.

### KEY PLAN



GROUND LEVEL



FIRST LEVEL

FLOOR PLAN 1. All dimensions are in imperial and metric, and measured from finish to finish excluding construction tolerances. 2. All materials, dimensions, and drawings are approximate only. 3. Information is subject to change without notice, at developer's absolute discretion. 4. Actual area may vary from the stated area. 5. Drawings not to scale. 6. All images used are for illustrative purposes only and do not represent the actual size, features, specifications, fittings, and furnishings. 7. The developer reserves the right to make revisions / alterations, at it's absolute discretion, without any liability whatsoever.



# ARABIAN RANCHES III

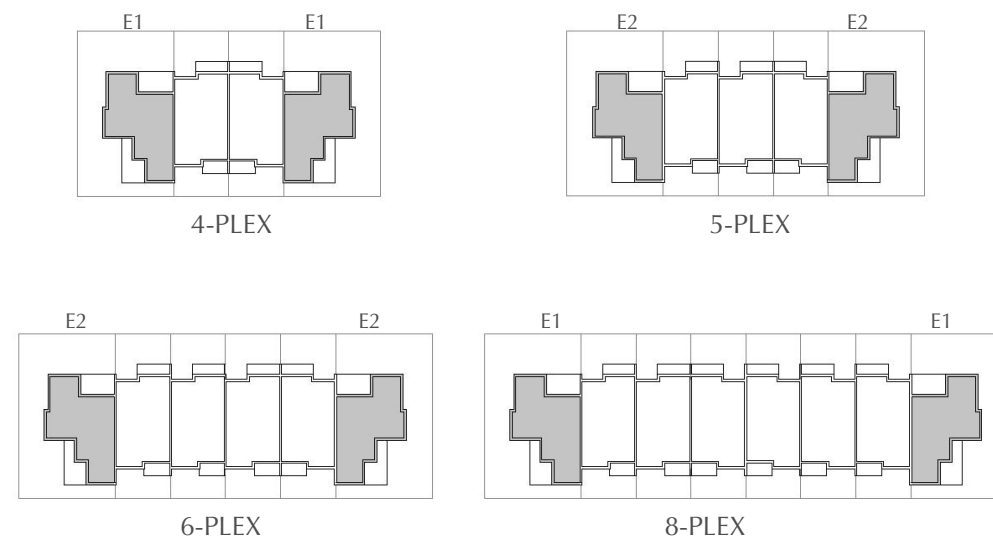
SUN

## 4 BEDROOM TOWNHOUSE

UNIT TYPE 2 END

E1	2445 SQ.FT.	227.14 SQ.M.
E2	2445 SQ.FT.	227.19 SQ.M.

### KEY PLAN



GROUND LEVEL



FIRST LEVEL

FLOOR PLAN 1. All dimensions are in imperial and metric, and measured from finish to finish excluding construction tolerances. 2. All materials, dimensions, and drawings are approximate only. 3. Information is subject to change without notice, at developer's absolute discretion. 4. Actual area may vary from the stated area. 5. Drawings not to scale. 6. All images used are for illustrative purposes only and do not represent the actual size, features, specifications, fittings, and furnishings. 7. The developer reserves the right to make revisions / alterations, at it's absolute discretion, without any liability whatsoever.





PREMIER ESTATES

Premier Estates, P03 Building 2, Bay Square, Business Bay, Dubai - UAE, ORN : 11814

Phone: +971 4 425 2780 Fax: +971 4 425 2601 Email: [info@dubaipremierestates.com](mailto:info@dubaipremierestates.com)

[www.dubaipremierestates.com](http://www.dubaipremierestates.com)

**EMAAR**