



MERAAS



PREMIER ESTATES

VILLA
AMALFI





L

*XCLU
SIVITY
MEETS
EXTRAV
AGANCE*

Let's talk luxury living. It's all about finding a meaningful place that redefines the way you experience the world. Today, ultimate privilege is having total privacy and easy access to the finer things in life.

In a bustling Dubai, an island of upscale possibilities is about to be unveiled with lush lifestyle at its best.



Located at the centre of Jumeira Bay

5 km from Dubai central district

15 km from Dubai International Airport

Direct access from Jumeirah Beach Road



SCULPTED IN THE SHAPE OF A TITANIC SEAHORSE, JUMEIRA BAY ISLAND IS FAST BECOMING A SOUGHT-AFTER LUXURY NEIGHBOURHOOD.

Think about a perfect location: Jumeira Bay is located on the coast of Dubai, with direct access from Jumeirah Beach Road. Here you are close to the central district, can reach Dubai International Airport or Downtown Dubai within minutes, and still enjoy a truly private lifestyle in an elite neighbourhood. Making this destination even more attractive is a branded luxury hotel with a state-of-the-art marina and yacht club, further enhancing the premium coastal offering.



NEW LUXURY CHALLENGES THE ORDINARY.

Now moving towards the centre of the island, on a slightly raised portion of land, Villa Amalfi reveals majestic homes emerging around a lush private park.

This green space is designed to work as an extended garden and will be accessible only by residents. From the rooftop terraces, breath-taking views are a feast for the eyes. From one side the clear waters of the Arabian Gulf, and from the other the awe-inspiring Dubai skyline.

Perfect simple lines.

Picture modern aesthetics and high-end finishes in truly one-of-a-kind residences. Become captivated by how the sunlight enters through high expansive windows, making the interiors even more comforting. Here, elegant proportions and functional design make for an unparalleled quality of life.



*“Luxurious
living spaces
empower
people
to create
extraordinary
moments”*



*NEW
PERSPECTIVES
ADDED
TO LIFE.*



World-class community facilities provide ultimate convenience within this premium development.

Envision a large outdoor pool, tennis courts, basketball court, cutting-edge gym, changing rooms, fun kids play area, a charming lounge and much more.

A black and white photograph of a woman's profile, facing right. Her hair is pulled back into a high ponytail. She is wearing a large, ornate earring with multiple tiers of dark and light beads. Her hand is resting near her neck. The background is dark and out of focus.

*“Glamour can
be a state of
mind”*



*THE
ULTIMATE
EXPRESSION
OF STYLE
AND
SOPHISTICATION.*

When you look around from Amalfi Villas, a seven-star branded hotel is just a walking distance away.

One of only six places in the world where you can experience the richness and exclusivity of a lifestyle reserved for the privileged few. A host of upscale fine dining, sporting, and wellness options are practically at your doorstep, all within Jumeira Bay.



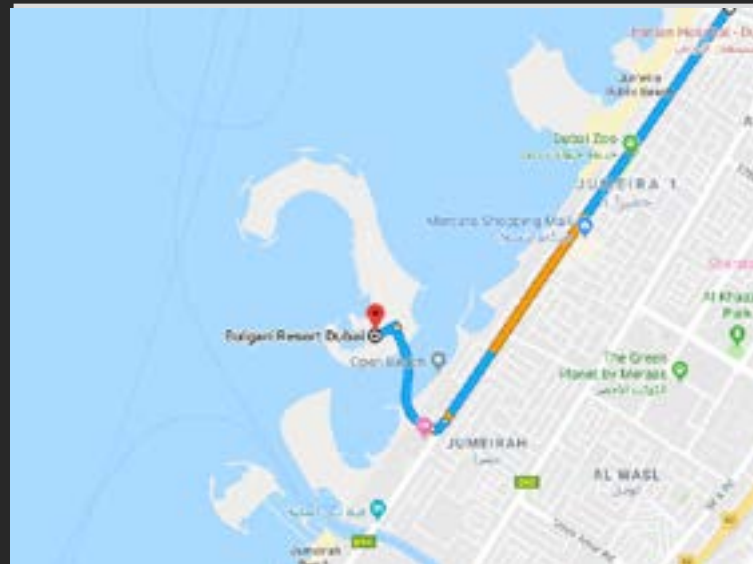
KEY FACTS

Located
at the centre
of Jumeira Bay



12,5000
sqm

of private park
accessible only
by residents



Direct access
from Jumeirah
Beach Road

Next to a
world-class
1.7 million
sqm. marina

1.7 million
sqm.

15 minutes
from Dubai
International
Airport



Close vicinity to
upscale dining,
leisure and wellness
experiences

Walking distance from a luxurious branded hotel

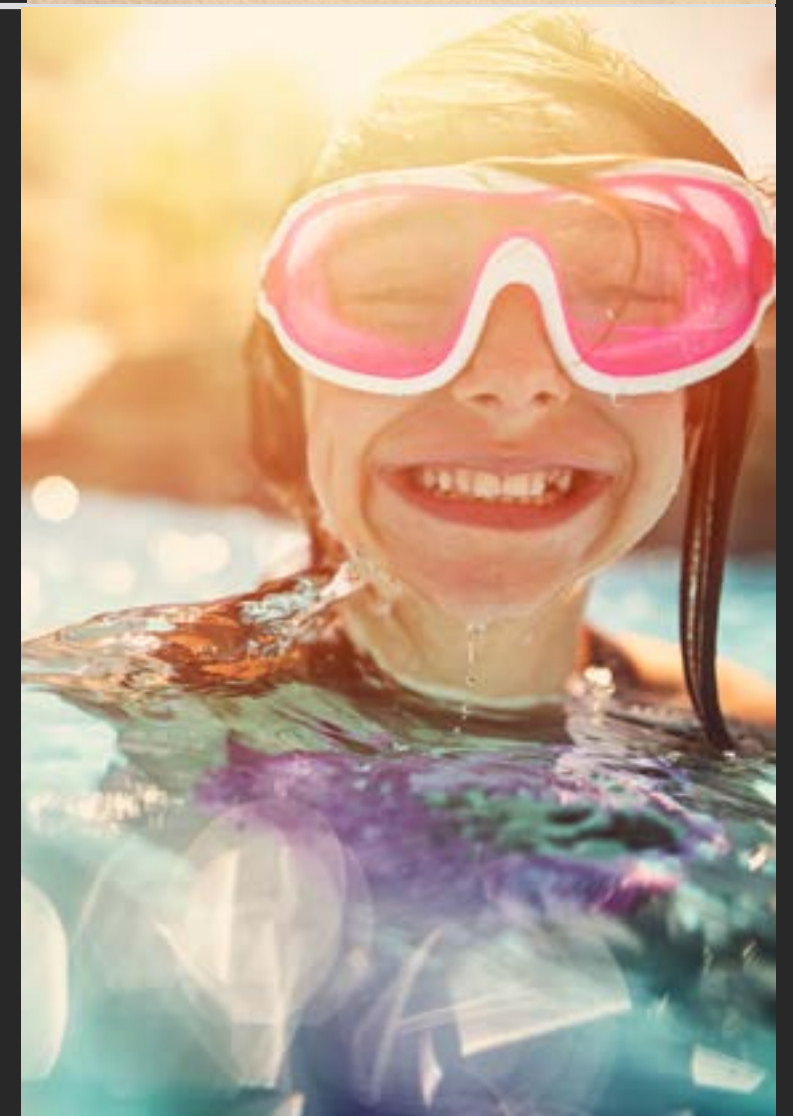


Adjacent to the beach



Contemporary design and high-end finishes

State-of-art community facilities:
Outdoor pool,
gym, tennis courts
basketball court,
play area, lounge
and more



Sea view from second floor and terrace





Meraas is an innovative holding company that is a key player for strengthening Dubai's global position as a destination to live, work and visit. From landmark destinations to modern residences concepts, Meraas is creating a new urban culture with diverse operations and expertise in real state, retail, food, tourism, leisure and entertainment, hospitality, healthcare, marinas and technology.



DUBAI

Discover Middle East's business and tourism hub.

With year-round sunshine, beautiful beaches and luxury lifestyle, Dubai enjoys a competitive combination of cost, market and environmental advantages that places it at the forefront of the globe's emerging markets.

The economy is no longer reliant on oil, but is more diversified, relying heavily on trade, services and finance sectors. Under a wise and progressive leadership, Dubai has prospered in the last decades, making the future look bright.



CONNECTIVITY

- 2 Minutes – Jumeirah Beach Road
- 7 Minutes – Sheikh Zayed
- 10 Minutes – La Mer
- 10 Minutes – City Walk
- 12 Minutes – Nikki Beach
- 15 Minutes – Burj Al Arab
- 15 Minutes – Dubai Design District
- 15 Minutes – Dubai International Airport Terminal 3
- 45 Minutes – Al Maktoum International Airport



PREMIER ESTATES

Premier Estates, P03 Building 2, Bay Square, Business Bay, Dubai - UAE, ORN : 11814
Phone: +971 4 425 2780 Fax: +971 4 425 2601 Email: info@dubaipremierestates.com
www.dubaipremierestates.com