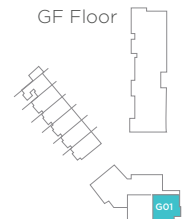
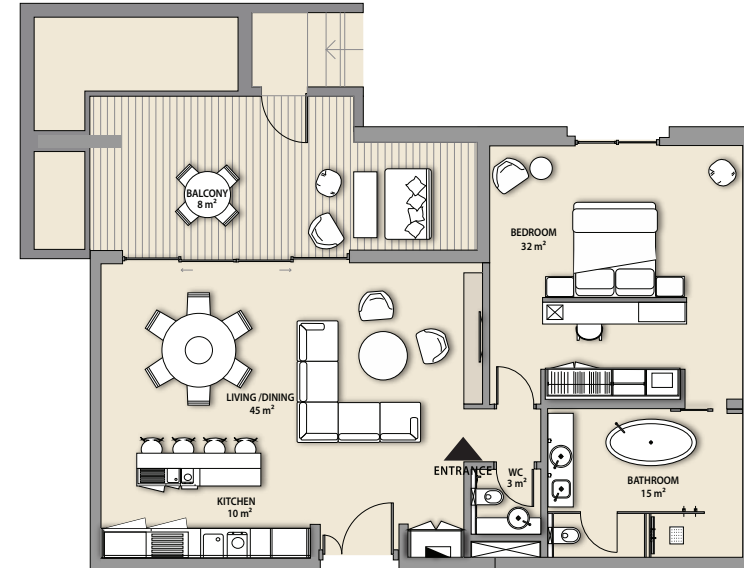




# 1 BEDROOM

APARTMENT TYPE A



**SKYLINE UNIT**

NET AREA

BALCONY

**TOTAL**

**G01**

1128 sq.ft

493 sq.ft

**1622 sq.ft**

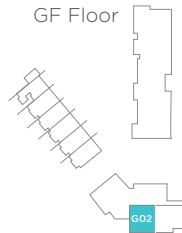
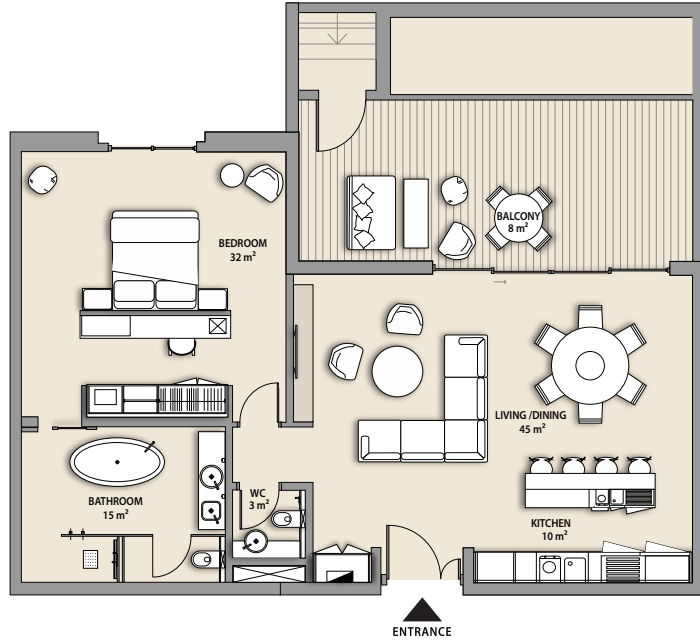
**VIEW**

Backyard

*\*Furniture in the layout is indicative only and will not be supplied within the apartment sale.*

# 1 BEDROOM

APARTMENT TYPE A



## SKYLINE UNIT

NET AREA	1128 sq.ft
BALCONY	480 sq.ft
<b>TOTAL</b>	<b>1609 sq.ft</b>

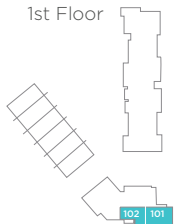
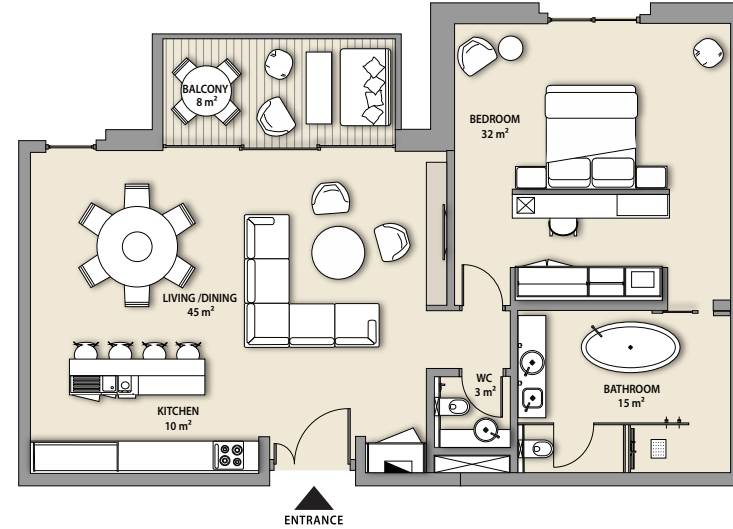
## G02

## VIEW

Backyard

# 1 BEDROOM

APARTMENT TYPE A



## SKYLINE UNITS

NET AREA	1128 sq.ft	1128 sq.ft
BALCONY	223 sq.ft	102 sq.ft
<b>TOTAL</b>	<b>1352 sq.ft</b>	<b>1230 sq.ft</b>

## 101

## 102

## VIEW

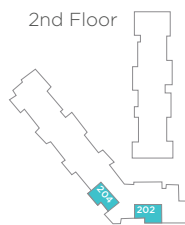
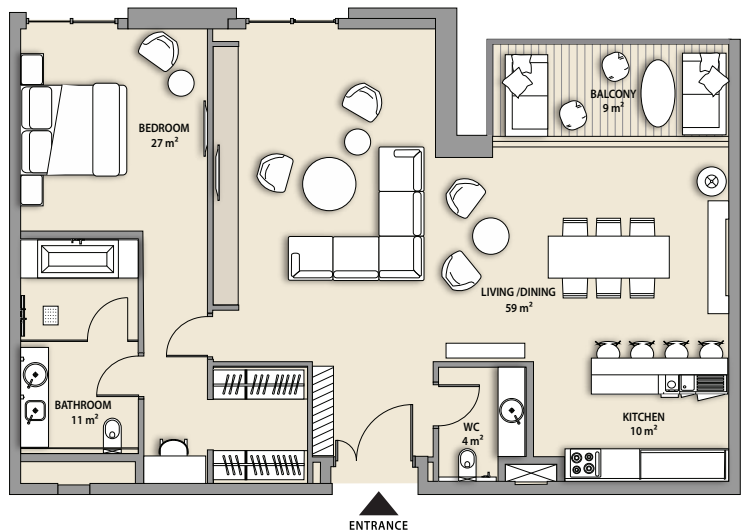
Pearl Jumeira

\*Furniture in the layout is indicative only and will not be supplied within the apartment sale.

\*Furniture in the layout is indicative only and will not be supplied within the apartment sale.

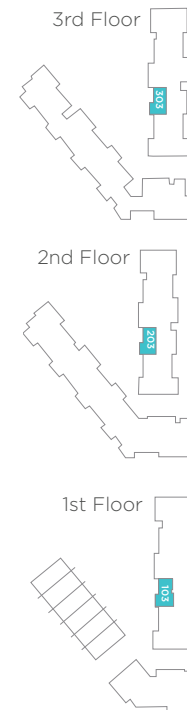
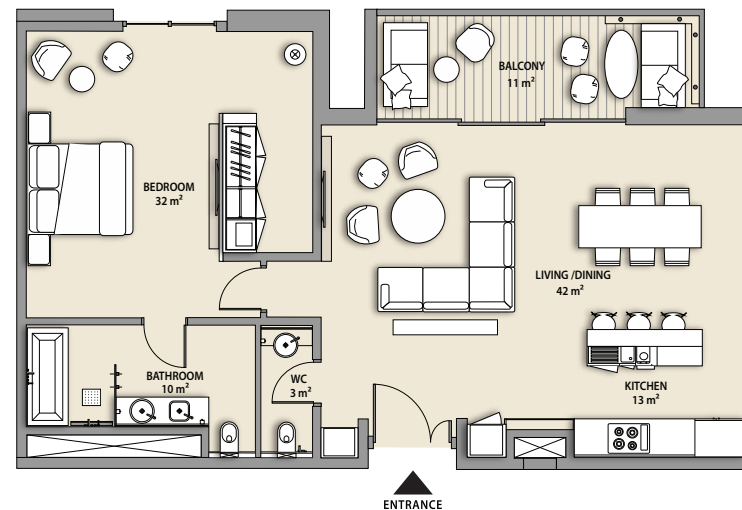
# 1 BEDROOM

APARTMENT TYPE A1



# 1 BEDROOM

APARTMENT TYPE B



## SKYLINE UNITS

	202	204	VIEW
NET AREA	1180 sq.ft	1182 sq.ft	Dubai Skyline/Pearl Jumeira
BALCONY	102 sq.ft	81 sq.ft	
<b>TOTAL</b>	<b>1282 sq.ft</b>	<b>1263 sq.ft</b>	

\*Furniture in the layout is indicative only and will not be supplied within the apartment sale.

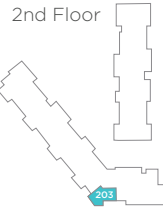
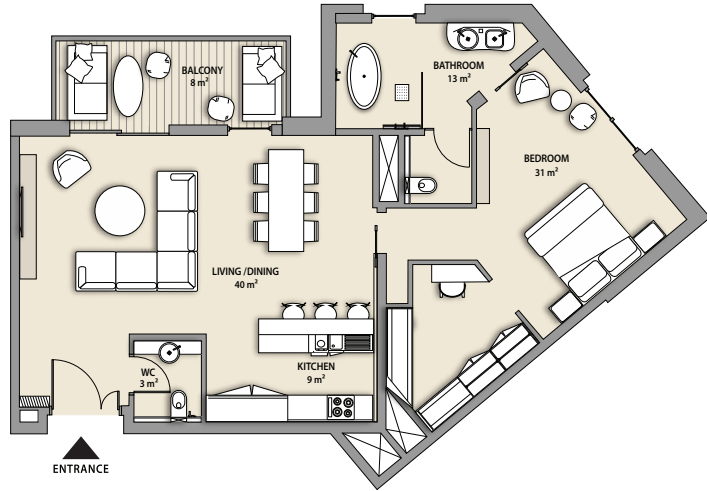
## SHORELINE UNITS 103, 203, 303

	103, 203, 303	VIEW
NET AREA	1075 sq.ft	Courtyard/Pool
BALCONY	130 sq.ft	
<b>TOTAL</b>	<b>1205 sq.ft</b>	

\*Furniture in the layout is indicative only and will not be supplied within the apartment sale.

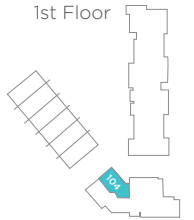
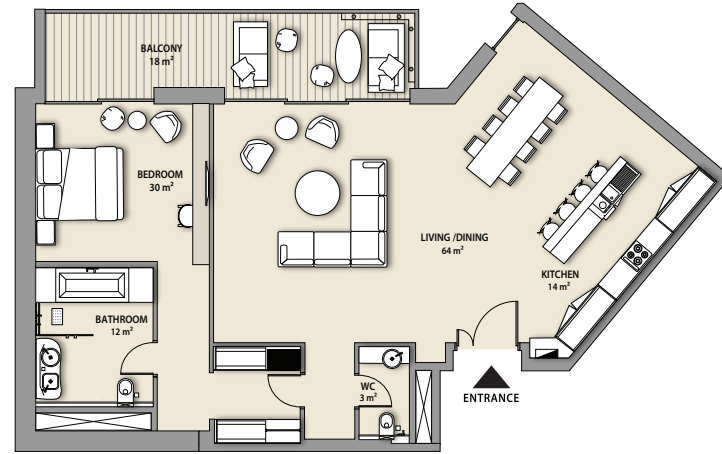
# 1 BEDROOM

APARTMENT TYPE C



# 1 BEDROOM

APARTMENT TYPE D



## SKYLINE UNIT

**203**

## VIEW

NET AREA 1039 sq.ft

Dubai Skyline/Pearl Jumeira

BALCONY 102 sq.ft

**TOTAL 1141 sq.ft**

## SKYLINE UNIT

**104**

## VIEW

NET AREA 1326 sq.ft

Courtyard

BALCONY 199 sq.ft

**TOTAL 1525 sq.ft**

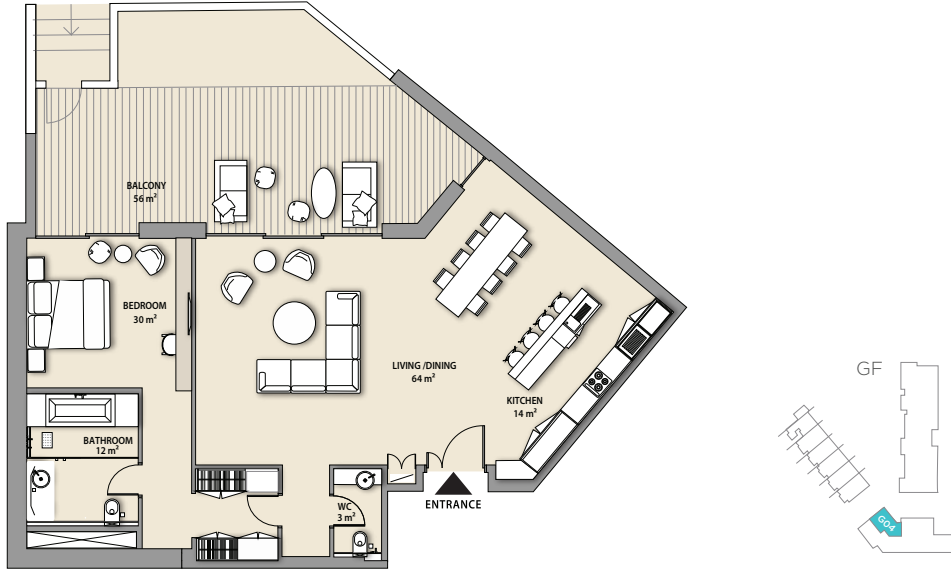
\*Furniture in the layout is indicative only and will not be supplied within the apartment sale.

\*Furniture in the layout is indicative only and will not be supplied within the apartment sale.



# 1 BEDROOM

APARTMENT TYPE D



## SKYLINE UNIT

**G04**

## VIEW

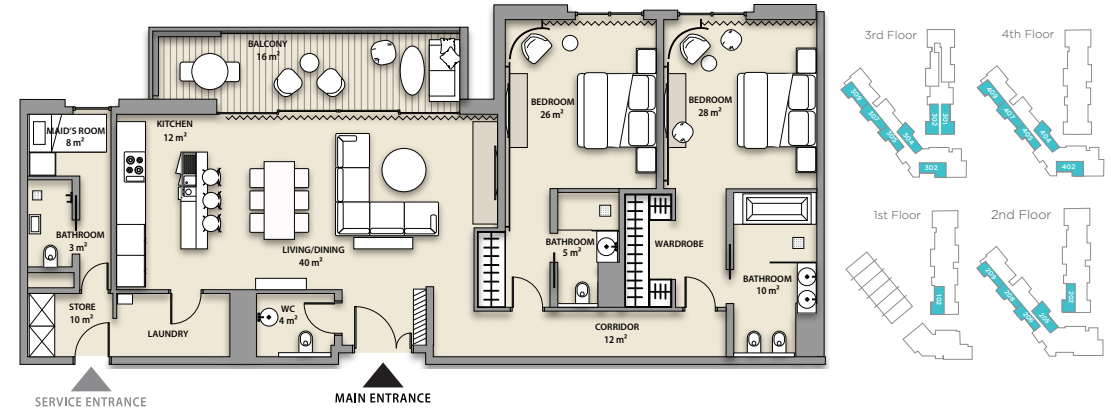
Courtyard

NET AREA 1326 sq.ft  
BALCONY 598 sq.ft  
**TOTAL 1924 sq.ft**

\*Furniture in the layout is indicative only and will not be supplied within the apartment sale.

# 2 BEDROOM

APARTMENT TYPE A



UNITS	VIEW	UNIT	VIEWS	UNITS	VIEWS
<b>102, 202 302, 205 304, 404</b>	Courtyard	<b>301</b>	Hotel/Courtyard	<b>206, 208, 209, 305, 307, 309, 405, 407, 409, 302, 402</b>	Dubai Skyline/ Pearl Jumeira

## SHORELINE UNITS

**102, 202,  
302, 301**

## SKYLINE UNITS

**208, 407**

**206, 305**

**209, 307, 409**

**302, 402**

**309**

**205, 304,  
405, 404**

NET AREA

1680 sq.ft

1676 sq.ft

1681 sq.ft

1672 sq.ft

1682 sq.ft

1679 sq.ft

BALCONY

178 sq.ft

178 sq.ft

178 sq.ft

178 sq.ft

178 sq.ft

178 sq.ft

**TOTAL**

**1858 sq.ft**

**1854 sq.ft**

**1859 sq.ft**

**1850 sq.ft**

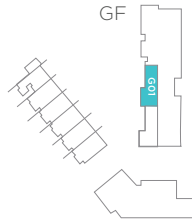
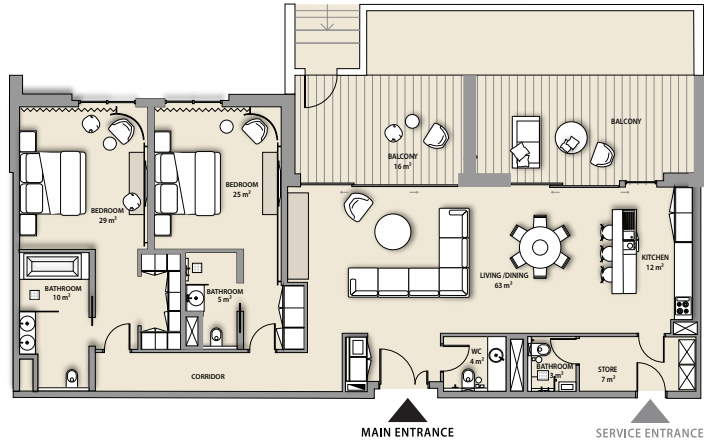
**1860 sq.ft**

**1857 sq.ft**

\*Furniture on balconies and curtains will be supplied to the following apartments: 301

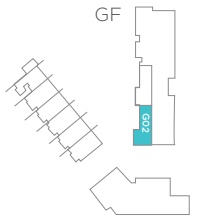
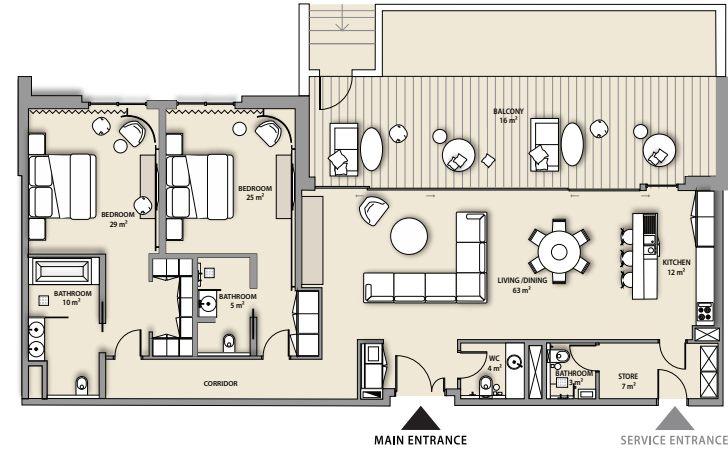
# 2 BEDROOM

APARTMENT TYPE A1



# 2 BEDROOM

APARTMENT TYPE A1



## SHORELINE UNIT

**G01**

**VIEW**

NET AREA

1694 sq.ft

Courtyard

BALCONY

683 sq.ft

**TOTAL**

**2377 sq.ft**

## SHORELINE UNIT

**G02**

**VIEW**

NET AREA

1698 sq.ft

Courtyard

BALCONY

528 sq.ft

**TOTAL**

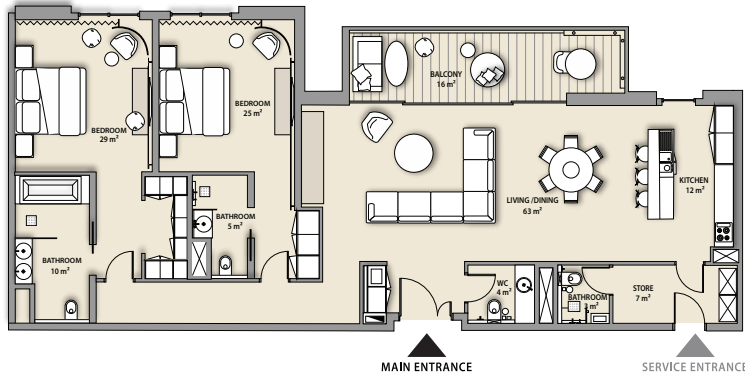
**2226 sq.ft**

\*Furniture in the layout is indicative only and will not be supplied within the apartment sale.

\*Furniture in the layout is indicative only and will not be supplied within the apartment sale.

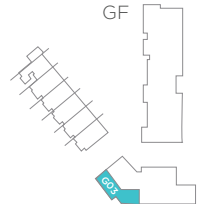
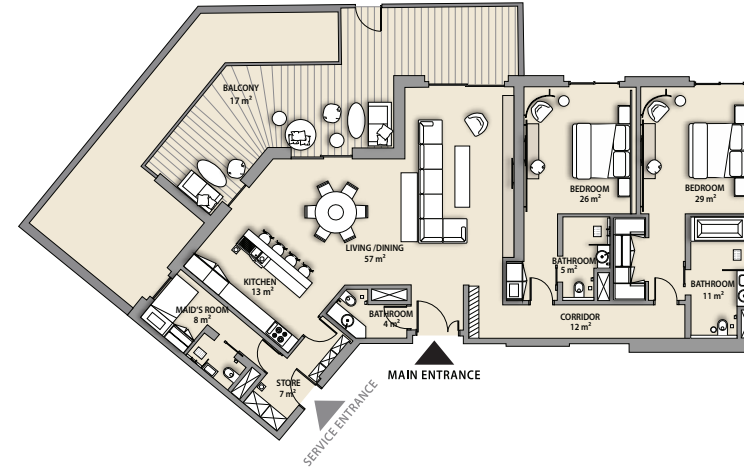
# 2 BEDROOM

APARTMENT TYPE A1



# 2 BEDROOM

APARTMENT TYPE B



## SHORELINE UNIT

**101, 201**

## VIEW

Hotel/Courtyard

NET AREA

1679 sq.ft

BALCONY

178 sq.ft

**TOTAL**

**1858 sq.ft**

## SKYLINE UNIT

**G03**

## VIEW

Backyard

NET AREA

1878 sq.ft

BALCONY

981 sq.ft

**TOTAL**

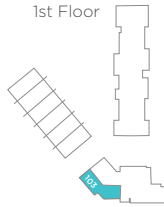
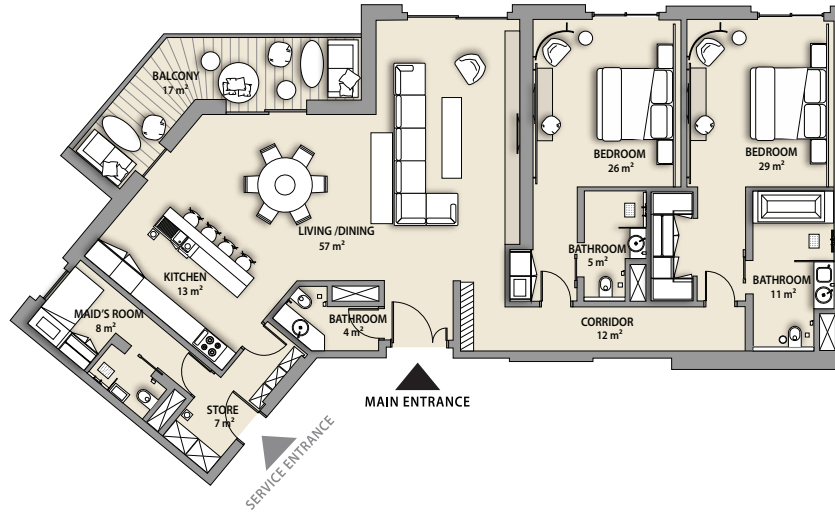
**2859 sq.ft**

\*Furniture on balconies and curtains will be supplied to the following apartments: 101 & 201

\*Furniture in the layout is indicative only and will not be supplied within the apartment sale.

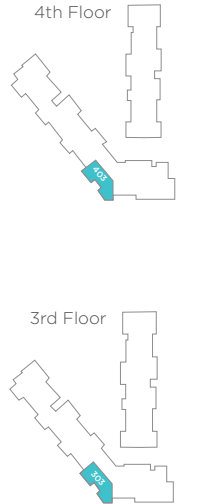
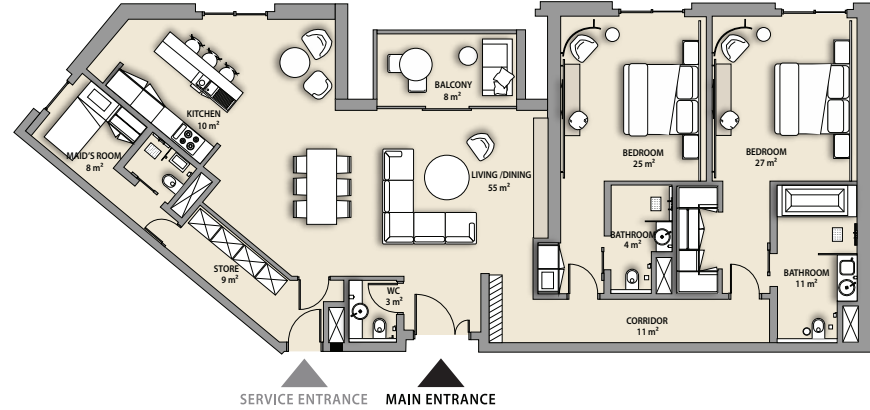
# 2 BEDROOM

APARTMENT TYPE B



# 2 BEDROOM

APARTMENT TYPE C



SKYLINE UNIT	103	VIEW
NET AREA	1878 sq.ft	Pearl Jumeira
BALCONY	183 sq.ft	
<b>TOTAL</b>	<b>2061 sq.ft</b>	

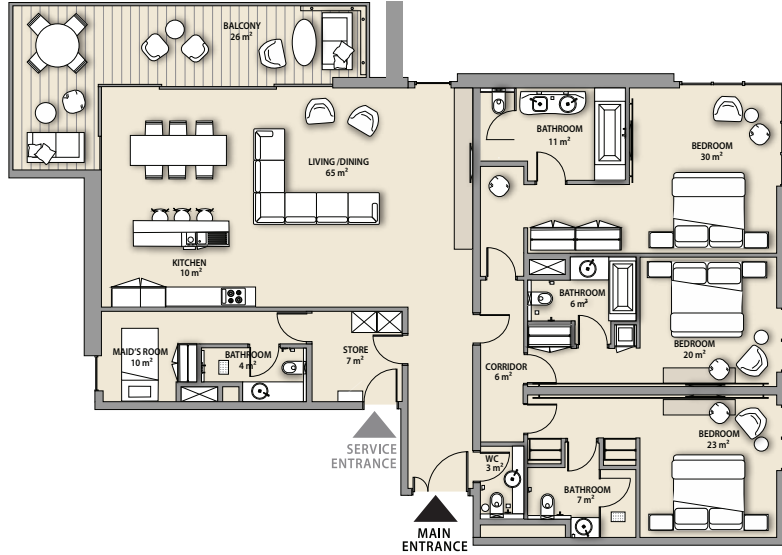
\*Furniture in the layout is indicative only and will not be supplied within the apartment sale.

SKYLINE UNITS	303	403	VIEW
NET AREA	1748 sq.ft	1751 sq.ft	Dubai Skyline/Pearl Jumeira
BALCONY	81 sq.ft	81 sq.ft	
<b>TOTAL</b>	<b>1829 sq.ft</b>	<b>1832 sq.ft</b>	

\*Furniture in the layout is indicative only and will not be supplied within the apartment sale.

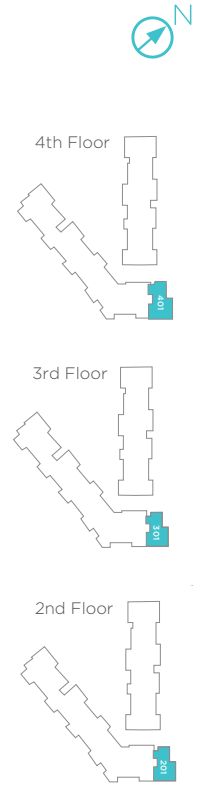
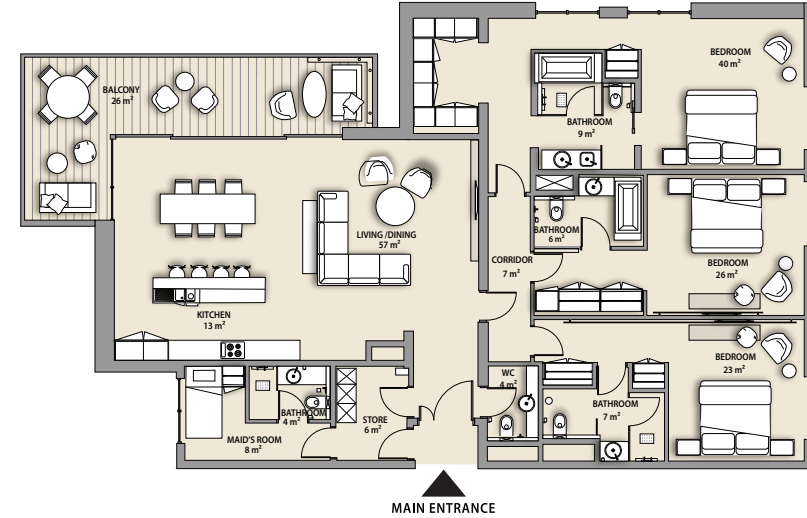
# 3 BEDROOM

APARTMENT TYPE A



# 3 BEDROOM

APARTMENT TYPE B



SHORELINE UNITS	106	206	306	VIEW
NET AREA	2157 sq.ft	2169 sq.ft	2169 sq.ft	Beach/Pool
BALCONY	289 sq.ft	291 sq.ft	289 sq.ft	
<b>TOTAL</b>	<b>2446 sq.ft</b>	<b>2460 sq.ft</b>	<b>2458 sq.ft</b>	

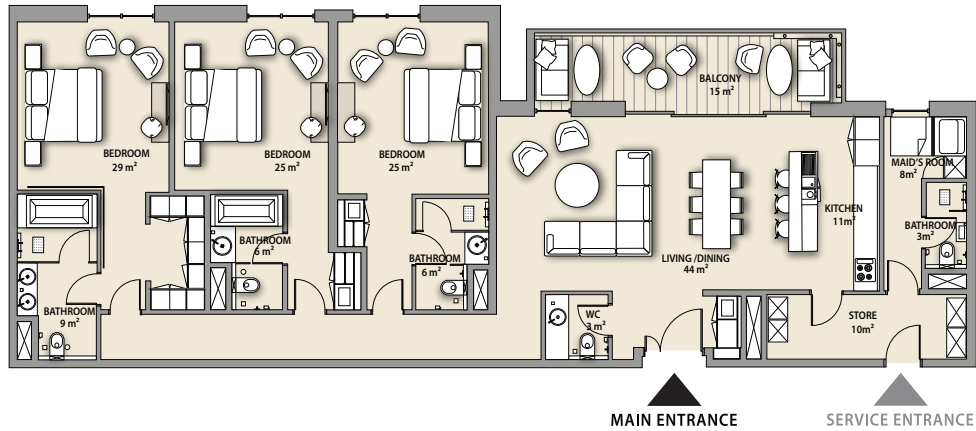
\*Furniture in the layout is indicative only and will not be supplied within the apartment sale.

SKYLINE UNITS	201, 301, 401	VIEW
NET AREA	2226 sq.ft	Courtyard
BALCONY	292 sq.ft	
<b>TOTAL</b>	<b>2518 sq.ft</b>	

\*Furniture on balconies and curtains will be supplied to the following apartments 201, 301, 401

# 3 BEDROOM

APARTMENT TYPE C

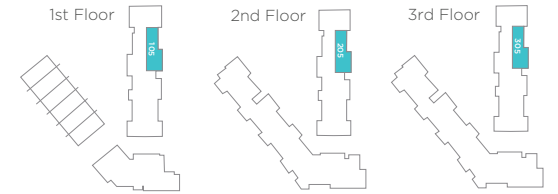
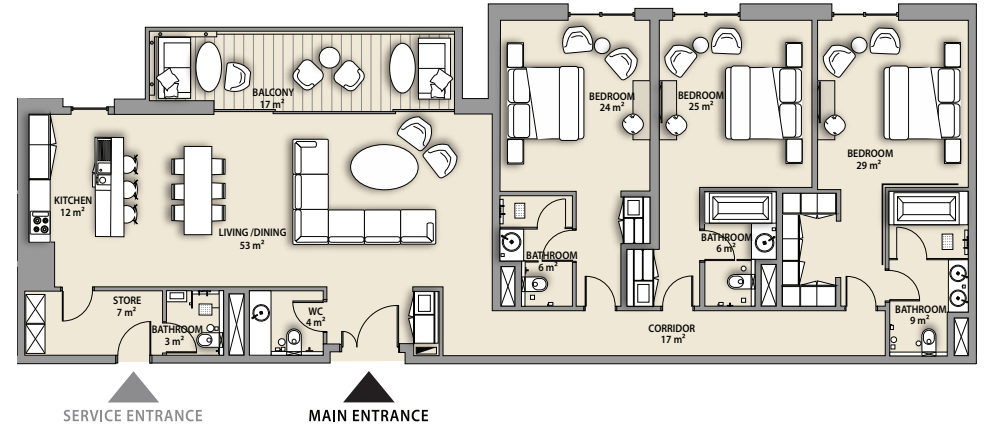


SHORELINE UNITS	104, 204	304	VIEW
SKYLINE UNITS	210, 308, 306, 406, 408	207	
NET AREA	2086 sq.ft	2079 sq.ft	2080 sq.ft
BALCONY	179 sq.ft	178 sq.ft	179 sq.ft
<b>TOTAL</b>	<b>2265 sq.ft</b>	<b>2257 sq.ft</b>	<b>2259 sq.ft</b>

\*Furniture in the layout is indicative only and will not be supplied within the apartment sale.

# 3 BEDROOM

APARTMENT TYPE C1

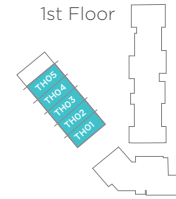
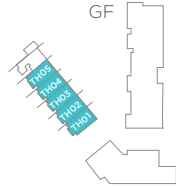
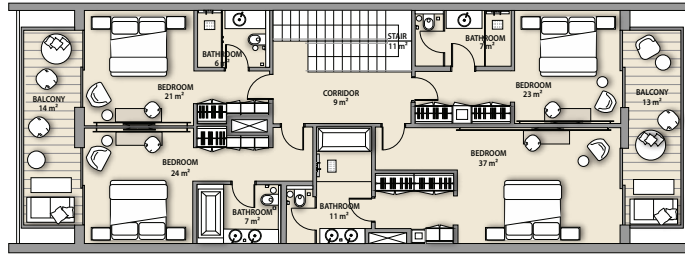
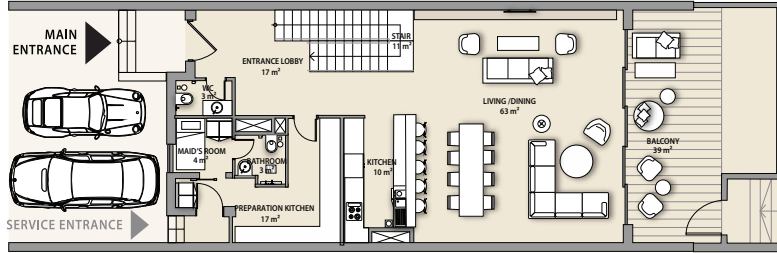


SHORELINE UNITS	105, 205, 305	VIEW
NET AREA	2092 sq.ft	Hotel/Courtyard
BALCONY	178 sq.ft	
<b>TOTAL</b>	<b>2270 sq.ft</b>	

\*Furniture on balconies and curtains will be supplied to the following apartments: 105, 205, 305

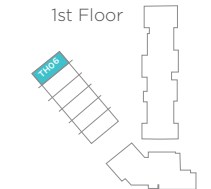
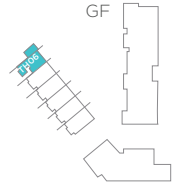
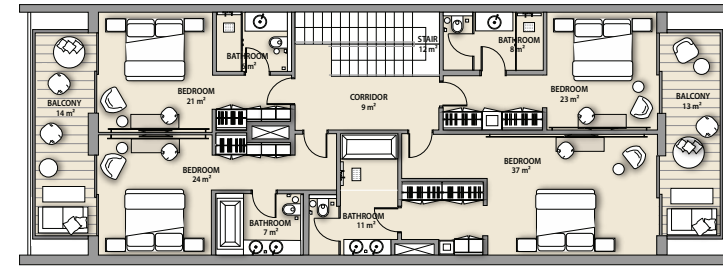
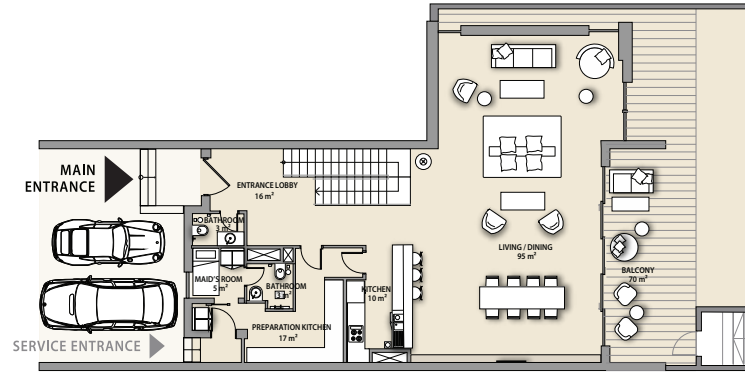
# TOWNHOUSE

APARTMENT TYPE A



# TOWNHOUSE

APARTMENT TYPE A1



SKYLINE UNITS	TH01	TH02, TH03, TH04, TH05
NET AREA	3094 sq.ft	3048 sq.ft
BALCONY	1373 sq.ft	1351 sq.ft
<b>TOTAL</b>	<b>4467 sq.ft</b>	<b>4399 sq.ft</b>

VIEW
Pool/ Pearl Jumeira Skyline/ Courtyard

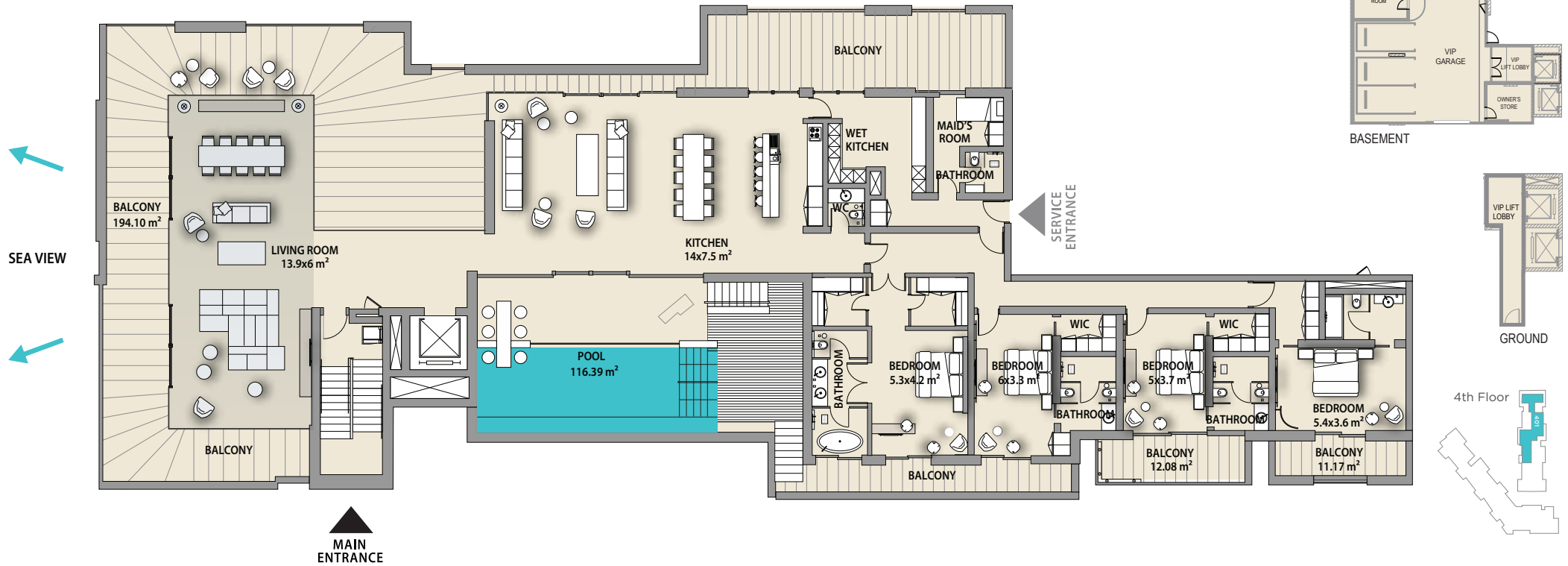
SKYLINE UNITS	TH06	VIEW
NET AREA	3381 sq.ft	Pool/ Pearl Jumeira Skyline/ Courtyard
BALCONY	1707 sq.ft	
<b>TOTAL</b>	<b>5088 sq.ft</b>	

\*Furniture in the layout is indicative only and will not be supplied within the apartment sale.

\*Furniture in the layout is indicative only and will not be supplied within the apartment sale.



# PENTHOUSE



## SHORELINE UNIT

**401**

## VIEW

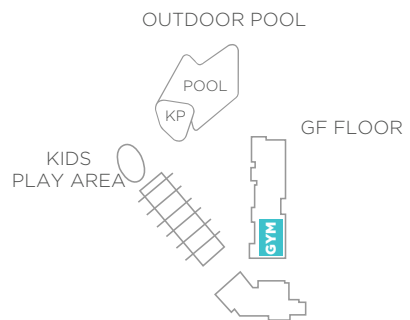
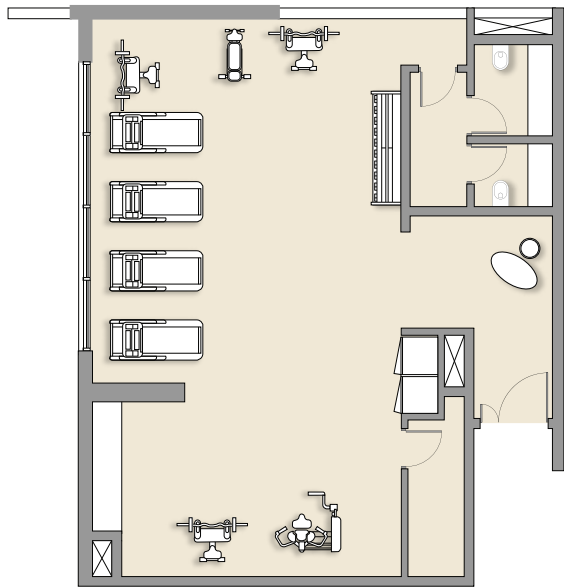
NET AREA 7566 sq.ft  
BALCONY 3592 sq.ft  
**TOTAL 11159 sq.ft**

Pool/Skyline/Pearl Jumeira/  
Courtyard/Beach/Sea

*\*The unit area includes the basement dedicated VIP parking and the ground private lift lobby  
\*Furniture in the layout is indicative only and will not be supplied within the apartment sale.*

# SWIMMING POOL AND GYM

GROUND FLOOR



## UNITS

GYM  
Adult Swimming pool  
Kids Swimming pool  
Kids Play Area

## NET AREA

128 m<sup>2</sup>  
117 m<sup>2</sup>  
Circa 31 m<sup>2</sup>  
Circa 180 m<sup>2</sup>

