



FLOOR PLANS



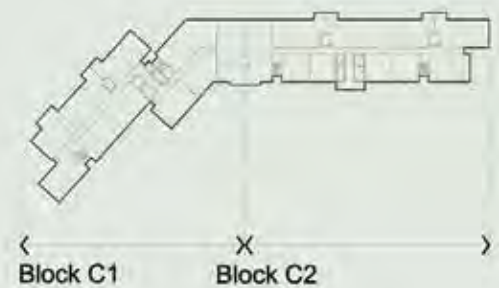
Drawings and images are for illustration purpose only. Information is subject to change without notice.

1 Bedroom

Units:

C2-107, C2-108, C2-109, C2-110

Level 01



SUITE AREA:	71.86 SQ.M	(773.44 SQ.FT)
BALCONY AREA:	15.08 SQ.M	(162.36 SQ.FT)
TOTAL AREA:	86.94 SQ.M	(935.80 SQ.FT)

Disclaimer: 1. All room dimensions are measured to structural elements and exclude wall finishes and construction tolerances. 2. All dimensions have been provided by our consultant architects. 3. All materials, dimensions & drawings are approximate. Information is subject to change without notice. 4. Actual suite area may vary from the stated area. Drawings not to scale. The developer reserves the right to make revisions. 5. Calculation of suite area is measured as the area bounded by the centre line of demising or partition walls separating one unit from another unit, the exterior face of all exterior walls, and the exterior face of the corridor wall enclosing the adjoining unit. 6. Calculation of balcony area is measured as the area bounded by the centre line of demising or partition walls separating one unit from another unit, the outmost face of the enclosing guard and the external face of the unit adjoining the balcony. 7. The units are measured at typical floor in the building. Columns may vary in size depending on the floor level.

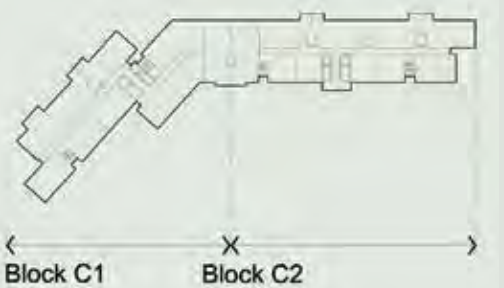


1 Bedroom

Units:

C2-207, C2-208, C2-209, C2-210, C2-306, C2-307, C2-308, C2-309, C2-406, C2-407, C2-408, C2-409, C2-506, C2-507, C2-508, C2-509, C2-606, C2-607, C2-608, C2-609, C2-706, C2-707, C2-708, C2-709, C2-806, C2-807, C2-808, C2-809, C2-906, C2-907, C2-908, C2-909, C2-1005, C2-1006, C2-1007, C2-1008

Level 02 - 10



SUITE AREA:	71.86 SQ.M	(773.44 SQ.FT)
BALCONY AREA:	9.23 SQ.M	(99.38 SQ.FT)
TOTAL AREA:	81.09 SQ.M	(872.82 SQ.FT)

Disclaimer: 1. All room dimensions are measured to structural elements and exclude wall finishes and construction tolerances. 2. All dimensions have been provided by our consultant architects. 3. All materials, dimensions & drawings are approximate. Information is subject to change without notice. 4. Actual suite area may vary from the stated area. Drawings not to scale. The developer reserves the right to make revisions. 5. Calculation of suite area is measured as the area bounded by the centre line of demising or partition walls separating one unit from another unit, the exterior face of all exterior walls, and the exterior face of the corridor wall enclosing the adjoining unit. 6. Calculation of balcony area is measured as the area bounded by the centre line of demising or partition walls separating one unit from another unit, the outmost face of the enclosing guard and the external face of the unit adjoining the balcony. 7. The units are measured at typical floor in the building. Columns may vary in size depending on the floor level.

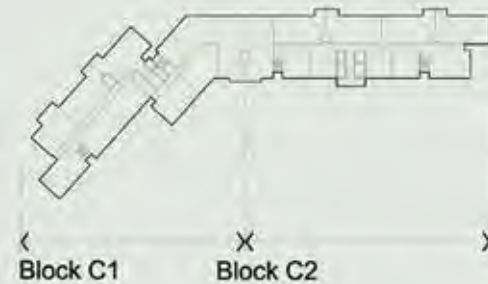


1 Bedroom

Units:

C1-208, C1-308, C1-408, C1-508, C1-608
C1-708, C1-808, C1-908, C1-1008, C1-1108

Level 02 - 11



SUITE AREA:	85.01 SQ.M (915.07 SQ.FT)
BALCONY AREA:	10.07 SQ.M (108.44 SQ.FT)
TOTAL AREA:	95.08 SQ.M (1023.51 SQ.FT)



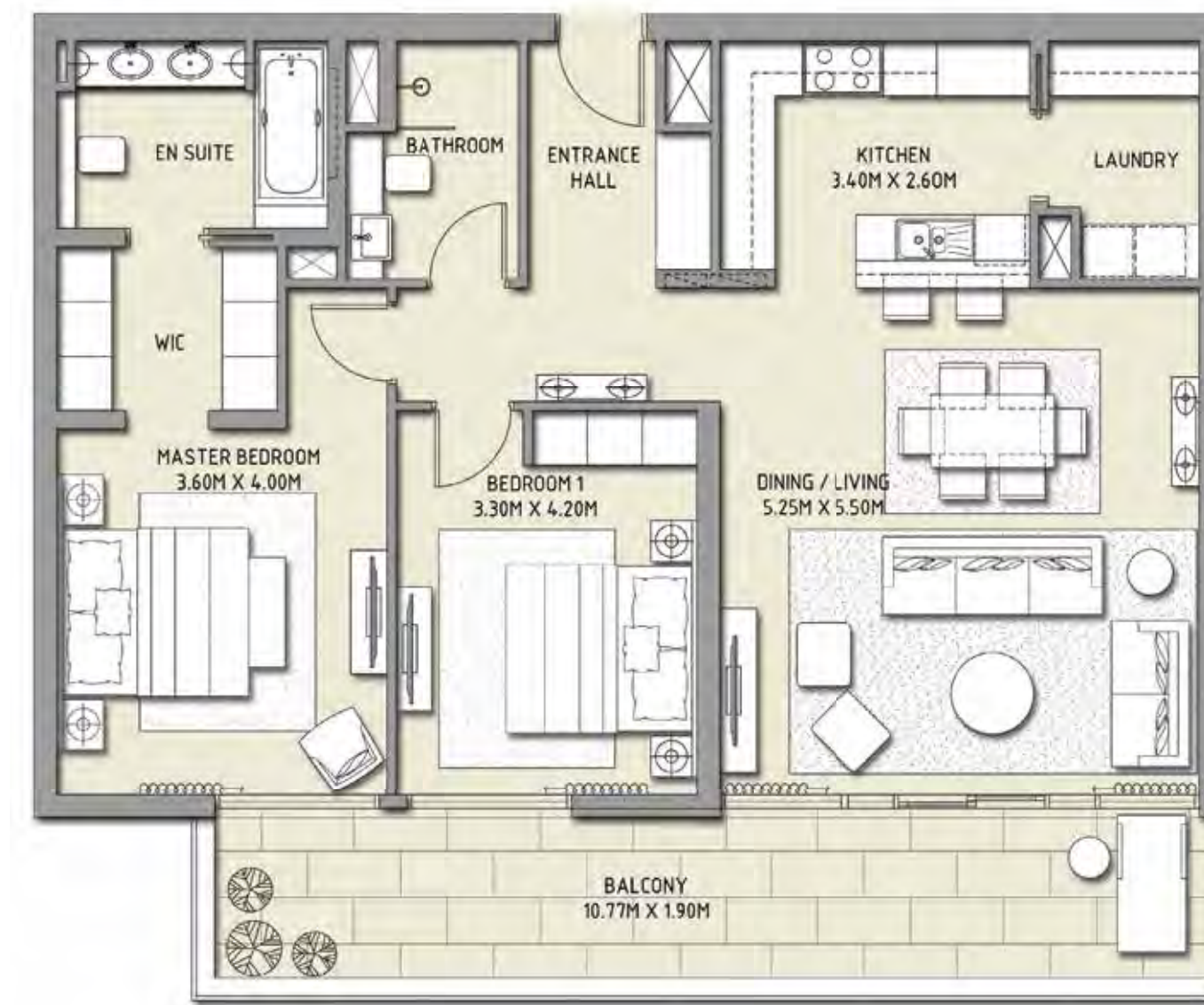
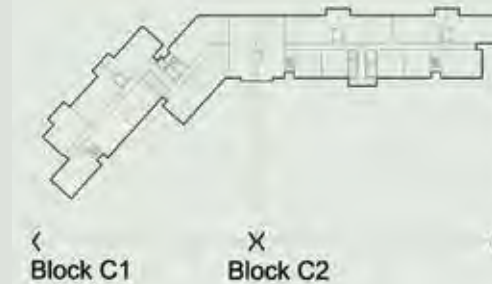
Disclaimer: 1. All room dimensions are measured to structural elements and exclude wall finishes and construction tolerances. 2. All dimensions have been provided by our consultant architects. 3. All materials, dimensions & drawings are approximate. Information is subject to change without notice. 4. Actual suite area may vary from the stated area. Drawings not to scale. The developer reserves the right to make revisions. 5. Calculation of suite area is measured as the area bounded by the centre line of demising or partition walls separating one unit from another unit, the exterior face of all exterior walls, and the exterior face of the corridor wall enclosing the adjoining unit. 6. Calculation of balcony area is measured as the area bounded by the centre line of demising or partition walls separating one unit from another unit, the outmost face of the enclosing guard and the external face of the unit adjoining the balcony. 7. The units are measured at typical floor in the building. Columns may vary in size depending on the floor level.

2 Bedroom

Units:

C1-103

Level 01



SUITE AREA:	107.81 SQ.M (1160.50 SQ.FT)
BALCONY AREA:	21.77 SQ.M (234.38 SQ.FT)
TOTAL AREA:	129.58 SQ.M (1394.88 SQ.FT)



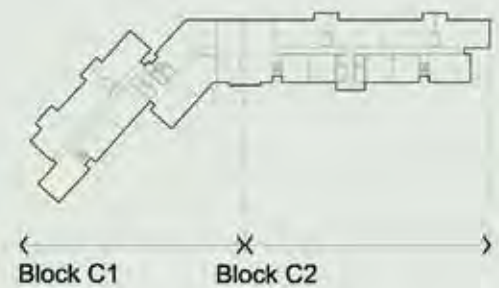
Disclaimer: 1. All room dimensions are measured to structural elements and exclude wall finishes and construction tolerances. 2. All dimensions have been provided by our consultant architects. 3. All materials, dimensions & drawings are approximate. Information is subject to change without notice. 4. Actual suite area may vary from the stated area. Drawings not to scale. The developer reserves the right to make revisions. 5. Calculation of suite area is measured as the area bounded by the centre line of demising or partition walls separating one unit from another unit, the exterior face of all exterior walls, and the exterior face of the corridor wall enclosing the adjoining unit. 6. Calculation of balcony area is measured as the area bounded by the centre line of demising or partition walls separating one unit from another unit, the outmost face of the enclosing guard and the external face of the unit adjoining the balcony. 7. The units are measured at typical floor in the building. Columns may vary in size depending on the floor level.

2 Bedroom

Units:

C1-104

Level 01



SUITE AREA:	119.30 SQ.M (1284.10 SQ.FT)
BALCONY AREA:	34.50 SQ.M (371.40 SQ.FT)
TOTAL AREA:	153.80 SQ.M (1655.50 SQ.FT)



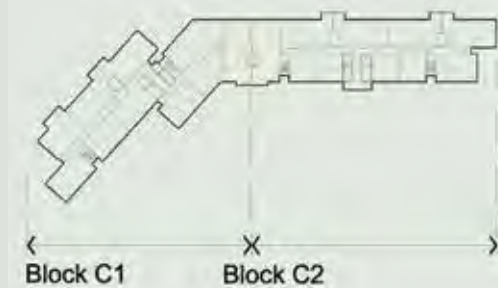
Disclaimer: 1. All room dimensions are measured to structural elements and exclude wall finishes and construction tolerances. 2. All dimensions have been provided by our consultant architects. 3. All materials, dimensions & drawings are approximate. Information is subject to change without notice. 4. Actual suite area may vary from the stated area. Drawings not to scale. The developer reserves the right to make revisions. 5. Calculation of suite area is measured as the area bounded by the centre line of demising or partition walls separating one unit from another unit, the exterior face of all exterior walls, and the exterior face of the corridor wall enclosing the adjoining unit. 6. Calculation of balcony area is measured as the area bounded by the centre line of demising or partition walls separating one unit from another unit, the outmost face of the enclosing guard and the external face of the unit adjoining the balcony. 7. The units are measured at typical floor in the building. Columns may vary in size depending on the floor level.

2 Bedroom

Units:

C2-106

Level 01



SUITE AREA:	135.55 SQ.M (1459.09 SQ.FT)
BALCONY AREA:	29.77 SQ.M (320.48 SQ.FT)
TOTAL AREA:	165.32 SQ.M (1779.57 SQ.FT)



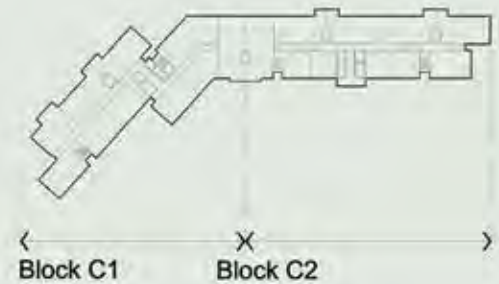
Disclaimer: 1. All room dimensions are measured to structural elements and exclude wall finishes and construction tolerances. 2. All dimensions have been provided by our consultant architects. 3. All materials, dimensions & drawings are approximate. Information is subject to change without notice. 4. Actual suite area may vary from the stated area. Drawings not to scale. The developer reserves the right to make revisions. 5. Calculation of suite area is measured as the area bounded by the centre line of demising or partition walls separating one unit from another unit, the exterior face of all exterior walls, and the exterior face of the corridor wall enclosing the adjoining unit. 6. Calculation of balcony area is measured as the area bounded by the centre line of demising or partition walls separating one unit from another unit, the outmost face of the enclosing guard and the external face of the unit adjoining the balcony. 7. The units are measured at typical floor in the building. Columns may vary in size depending on the floor level.

2 Bedroom

Units:

C2-111

Level 01



SUITE AREA:	108.26 SQ.M (1165.31 SQ.FT)
BALCONY AREA:	34.43 SQ.M (370.61 SQ.FT)
TOTAL AREA:	142.69 SQ.M (1535.92 SQ.FT)



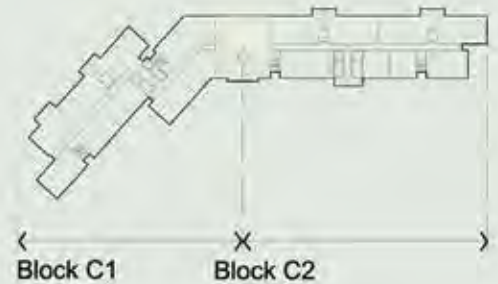
Disclaimer: 1. All room dimensions are measured to structural elements and exclude wall finishes and construction tolerances. 2. All dimensions have been provided by our consultant architects. 3. All materials, dimensions & drawings are approximate. Information is subject to change without notice. 4. Actual suite area may vary from the stated area. Drawings not to scale. The developer reserves the right to make revisions. 5. Calculation of suite area is measured as the area bounded by the centre line of demising or partition walls separating one unit from another unit, the exterior face of all exterior walls, and the exterior face of the corridor wall enclosing the adjoining unit. 6. Calculation of balcony area is measured as the area bounded by the centre line of demising or partition walls separating one unit from another unit, the outmost face of the enclosing guard and the external face of the unit adjoining the balcony. 7. The units are measured at typical floor in the building. Columns may vary in size depending on the floor level.

2 Bedroom

Units:

C2-105, C2-205

Level 01 - 02



SUITE AREA:	141.72 SQ.M (1525.44 SQ.FT)
BALCONY AREA:	40.88 SQ.M (440.03 SQ.FT)
TOTAL AREA:	182.60 SQ.M (1965.47 SQ.FT)



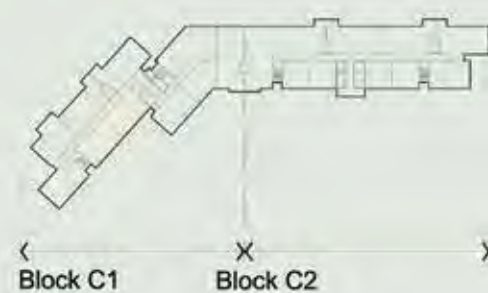
Disclaimer: 1. All room dimensions are measured to structural elements and exclude wall finishes and construction tolerances. 2. All dimensions have been provided by our consultant architects. 3. All materials, dimensions & drawings are approximate. Information is subject to change without notice. 4. Actual suite area may vary from the stated area. Drawings not to scale. The developer reserves the right to make revisions. 5. Calculation of suite area is measured as the area bounded by the centre line of demising or partition walls separating one unit from another unit, the exterior face of all exterior walls, and the exterior face of the corridor wall enclosing the adjoining unit. 6. Calculation of balcony area is measured as the area bounded by the centre line of demising or partition walls separating one unit from another unit, the outmost face of the enclosing guard and the external face of the unit adjoining the balcony. 7. The units are measured at typical floor in the building. Columns may vary in size depending on the floor level.

2 Bedroom

Units:

C1-102, C1-205, C1-206, C1-305, C1-306, C1-405
 C1-406, C1-505, C1-506, C1-605, C1-606, C1-705
 C1-706, C1-805, C1-806, C1-905, C1-906, C1-1005
 C1-1006, C1-1105, C1-1106, C1-1205, C1-1206
 C1-1304, C1-1305, C1-1403, C1-1404

Level 01 - 14



SUITE AREA:	107.81 SQ.M (1160.50 SQ.FT)
BALCONY AREA:	10.86 SQ.M (116.92 SQ.FT)
TOTAL AREA:	118.67 SQ.M (1277.42 SQ.FT)



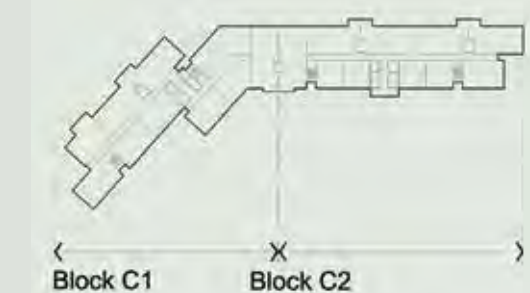
Disclaimer: 1. All room dimensions are measured to structural elements and exclude wall finishes and construction tolerances. 2. All dimensions have been provided by our consultant architects. 3. All materials, dimensions & drawings are approximate. Information is subject to change without notice. 4. Actual suite area may vary from the stated area. Drawings not to scale. The developer reserves the right to make revisions. 5. Calculation of suite area is measured as the area bounded by the centre line of demising or partition walls separating one unit from another unit, the exterior face of all exterior walls, and the exterior face of the corridor wall enclosing the adjoining unit. 6. Calculation of balcony area is measured as the area bounded by the centre line of demising or partition walls separating one unit from another unit, the outmost face of the enclosing guard and the external face of the unit adjoining the balcony. 7. The units are measured at typical floor in the building. Columns may vary in size depending on the floor level.

2 Bedroom

Units:

C1-203

Level 02



SUITE AREA:	122.39 SQ.M (1317.38 SQ.FT)
BALCONY AREA:	45.99 SQ.M (495.03 SQ.FT)
TOTAL AREA:	168.38 SQ.M (1812.41 SQ.FT)



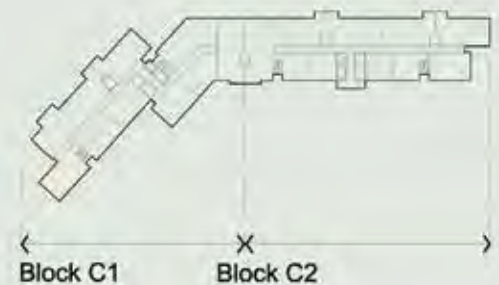
Disclaimer: 1. All room dimensions are measured to structural elements and exclude wall finishes and construction tolerances. 2. All dimensions have been provided by our consultant architects. 3. All materials, dimensions & drawings are approximate. Information is subject to change without notice. 4. Actual suite area may vary from the stated area. Drawings not to scale. The developer reserves the right to make revisions. 5. Calculation of suite area is measured as the area bounded by the centre line of demising or partition walls separating one unit from another unit, the exterior face of all exterior walls, and the exterior face of the corridor wall enclosing the adjoining unit. 6. Calculation of balcony area is measured as the area bounded by the centre line of demising or partition walls separating one unit from another unit, the outmost face of the enclosing guard and the external face of the unit adjoining the balcony. 7. The units are measured at typical floor in the building. Columns may vary in size depending on the floor level.

2 Bedroom

Units:

C1-204

Level 02



SUITE AREA:	119.30 SQ.M (1284.10 SQ.FT)
BALCONY AREA:	12.50 SQ.M (134.60 SQ.FT)
GARDEN AREA:	66.00 SQ.M (710.40 SQ.FT)
TOTAL AREA:	197.80 SQ.M (2129.10 SQ.FT)



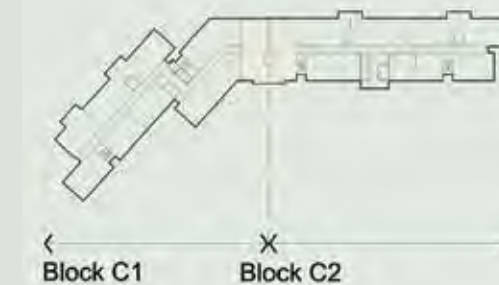
Disclaimer: 1. All room dimensions are measured to structural elements and exclude wall finishes and construction tolerances. 2. All dimensions have been provided by our consultant architects. 3. All materials, dimensions & drawings are approximate. Information is subject to change without notice. 4. Actual suite area may vary from the stated area. Drawings not to scale. The developer reserves the right to make revisions. 5. Calculation of suite area is measured as the area bounded by the centre line of demising or partition walls separating one unit from another unit, the exterior face of all exterior walls, and the exterior face of the corridor wall enclosing the adjoining unit. 6. Calculation of balcony area is measured as the area bounded by the centre line of demising or partition walls separating one unit from another unit, the outmost face of the enclosing guard and the external face of the unit adjoining the balcony. 7. The units are measured at typical floor in the building. Columns may vary in size depending on the floor level.

2 Bedroom

Units:

C2-206

Level 02



SUITE AREA:	135.55 SQ.M (1459.09 SQ.FT)
BALCONY AREA:	18.76 SQ.M (201.96 SQ.FT)
TOTAL AREA:	154.31 SQ.M (1661.05 SQ.FT)



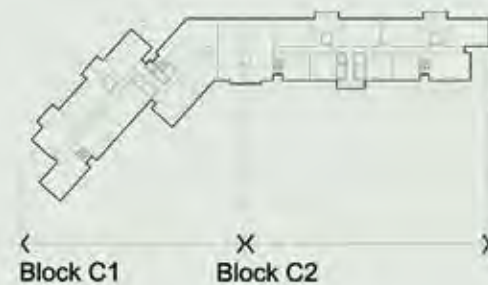
Disclaimer: 1. All room dimensions are measured to structural elements and exclude wall finishes and construction tolerances. 2. All dimensions have been provided by our consultant architects. 3. All materials, dimensions & drawings are approximate. Information is subject to change without notice. 4. Actual suite area may vary from the stated area. Drawings not to scale. The developer reserves the right to make revisions. 5. Calculation of suite area is measured as the area bounded by the centre line of demising or partition walls separating one unit from another unit, the exterior face of all exterior walls, and the exterior face of the corridor wall enclosing the adjoining unit. 6. Calculation of balcony area is measured as the area bounded by the centre line of demising or partition walls separating one unit from another unit, the outmost face of the enclosing guard and the external face of the unit adjoining the balcony. 7. The units are measured at typical floor in the building. Columns may vary in size depending on the floor level.

2 Bedroom

Units:

C2-211, C2-310, C2-410, C2-510, C2-610,
C2-710, C2-810, C2-910

Level 02 - 09



SUITE AREA:	108.26 SQ.M (1165.35 SQ.FT)
BALCONY AREA:	24.01 SQ.M (258.47 SQ.FT)
TOTAL AREA:	132.27 SQ.M (1423.82 SQ.FT)



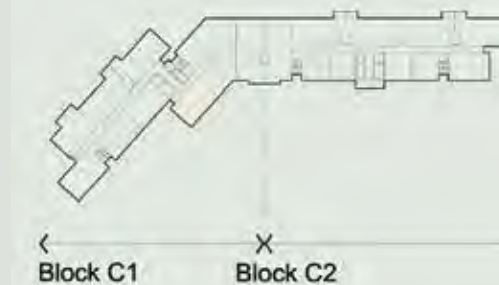
Disclaimer: 1. All room dimensions are measured to structural elements and exclude wall finishes and construction tolerances. 2. All dimensions have been provided by our consultant architects. 3. All materials, dimensions & drawings are approximate. Information is subject to change without notice. 4. Actual suite area may vary from the stated area. Drawings not to scale. The developer reserves the right to make revisions. 5. Calculation of suite area is measured as the area bounded by the centre line of demising or partition walls separating one unit from another unit, the exterior face of all exterior walls, and the exterior face of the corridor wall enclosing the adjoining unit. 6. Calculation of balcony area is measured as the area bounded by the centre line of demising or partition walls separating one unit from another unit, the outmost face of the enclosing guard and the external face of the unit adjoining the balcony. 7. The units are measured at typical floor in the building. Columns may vary in size depending on the floor level.

2 Bedroom

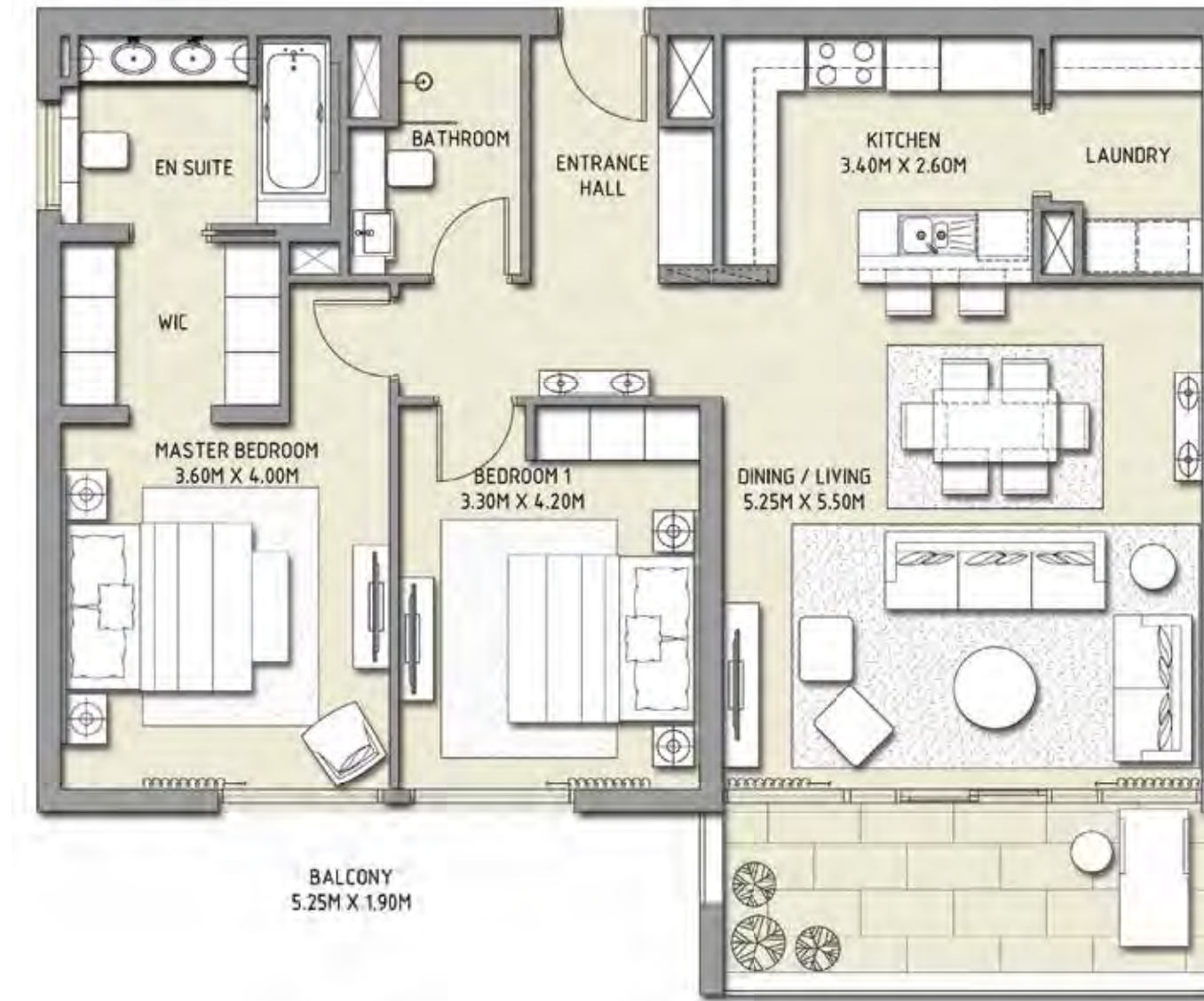
Units:

C1-207, C1-307, C1-407, C1-507, C1-607
C1-707, C1-807, C1-907, C1-1007, C1-1107

Level 02 - 11



SUITE AREA:	107.81 SQ.M (1160.50 SQ.FT)
BALCONY AREA:	10.86 SQ.M (116.92 SQ.FT)
TOTAL AREA:	118.67 SQ.M (1277.42 SQ.FT)



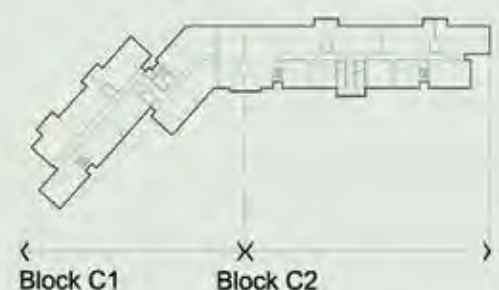
Disclaimer: 1. All room dimensions are measured to structural elements and exclude wall finishes and construction tolerances. 2. All dimensions have been provided by our consultant architects. 3. All materials, dimensions & drawings are approximate. Information is subject to change without notice. 4. Actual suite area may vary from the stated area. Drawings not to scale. The developer reserves the right to make revisions. 5. Calculation of suite area is measured as the area bounded by the centre line of demising or partition walls separating one unit from another unit, the exterior face of all exterior walls, and the exterior face of the corridor wall enclosing the adjoining unit. 6. Calculation of balcony area is measured as the area bounded by the centre line of demising or partition walls separating one unit from another unit, the outmost face of the enclosing guard and the external face of the unit adjoining the balcony. 7. The units are measured at typical floor in the building. Columns may vary in size depending on the floor level.

2 Bedroom

Units:

C1-303, C1-403, C1-503, C1-603, C1-703
C1-803, C1-903, C1-1003, C1-1103, C1-1203
C1-1302, C1-1401

Level 03 - 14



SUITE AREA:	122.39 SQ.M (1317.38 SQ.FT)
BALCONY AREA:	13.12 SQ.M (141.28 SQ.FT)
TOTAL AREA:	135.51 SQ.M (1458.66 SQ.FT)



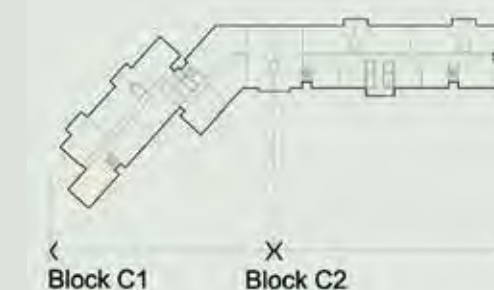
Disclaimer: 1. All room dimensions are measured to structural elements and exclude wall finishes and construction tolerances. 2. All dimensions have been provided by our consultant architects. 3. All materials, dimensions & drawings are approximate. Information is subject to change without notice. 4. Actual suite area may vary from the stated area. Drawings not to scale. The developer reserves the right to make revisions. 5. Calculation of suite area is measured as the area bounded by the centre line of demising or partition walls separating one unit from another unit, the exterior face of all exterior walls, and the exterior face of the corridor wall enclosing the adjoining unit. 6. Calculation of balcony area is measured as the area bounded by the centre line of demising or partition walls separating one unit from another unit, the outmost face of the enclosing guard and the external face of the unit adjoining the balcony. 7. The units are measured at typical floor in the building. Columns may vary in size depending on the floor level.

2 Bedroom

Units:

C1-304, C1-404, C1-504, C1-604, C1-704
C1-804, C1-904, C1-1004, C1-1104, C1-1204,
C1-1303, C1-1402

Level 03 - 14



SUITE AREA:	119.30 SQ.M (1284.10 SQ.FT)
BALCONY AREA:	25.00 SQ.M (269.10 SQ.FT)
TOTAL AREA:	144.30 SQ.M (1553.20 SQ.FT)



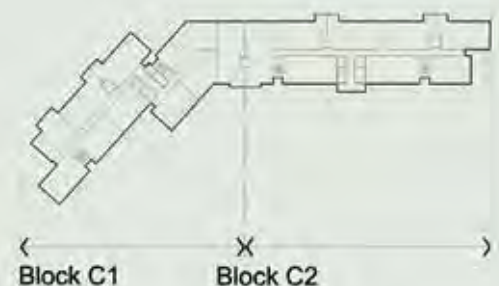
Disclaimer: 1. All room dimensions are measured to structural elements and exclude wall finishes and construction tolerances. 2. All dimensions have been provided by our consultant architects. 3. All materials, dimensions & drawings are approximate. Information is subject to change without notice. 4. Actual suite area may vary from the stated area. Drawings not to scale. The developer reserves the right to make revisions. 5. Calculation of suite area is measured as the area bounded by the centre line of demising or partition walls separating one unit from another unit, the exterior face of all exterior walls, and the exterior face of the corridor wall enclosing the adjoining unit. 6. Calculation of balcony area is measured as the area bounded by the centre line of demising or partition walls separating one unit from another unit, the outmost face of the enclosing guard and the external face of the unit adjoining the balcony. 7. The units are measured at typical floor in the building. Columns may vary in size depending on the floor level.

2 Bedroom

Units:

C2-1102, C2-1103

Level 11



SUITE AREA:	120.03 SQ.M (1291.96 SQ.FT)
BALCONY AREA:	43.65 SQ.M (469.83 SQ.FT)
TOTAL AREA:	163.68 SQ.M (1761.79 SQ.FT)



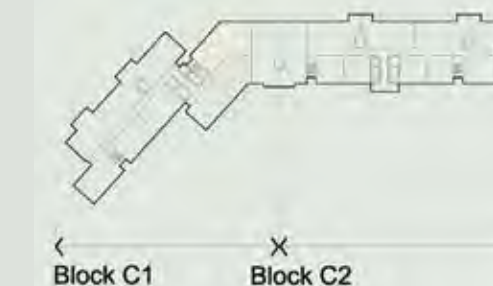
Disclaimer: 1. All room dimensions are measured to structural elements and exclude wall finishes and construction tolerances. 2. All dimensions have been provided by our consultant architects. 3. All materials, dimensions & drawings are approximate. Information is subject to change without notice. 4. Actual suite area may vary from the stated area. Drawings not to scale. The developer reserves the right to make revisions. 5. Calculation of suite area is measured as the area bounded by the centre line of demising or partition walls separating one unit from another unit, the exterior face of all exterior walls, and the exterior face of the corridor wall enclosing the adjoining unit. 6. Calculation of balcony area is measured as the area bounded by the centre line of demising or partition walls separating one unit from another unit, the outmost face of the enclosing guard and the external face of the unit adjoining the balcony. 7. The units are measured at typical floor in the building. Columns may vary in size depending on the floor level.

3 Bedroom

Units:

C1-101

Level 01



SUITE AREA:	170.17 SQ.M (1831.70 SQ.FT)
BALCONY AREA:	40.00 SQ.M (430.50 SQ.FT)
TOTAL AREA:	210.17 SQ.M (2262.20 SQ.FT)



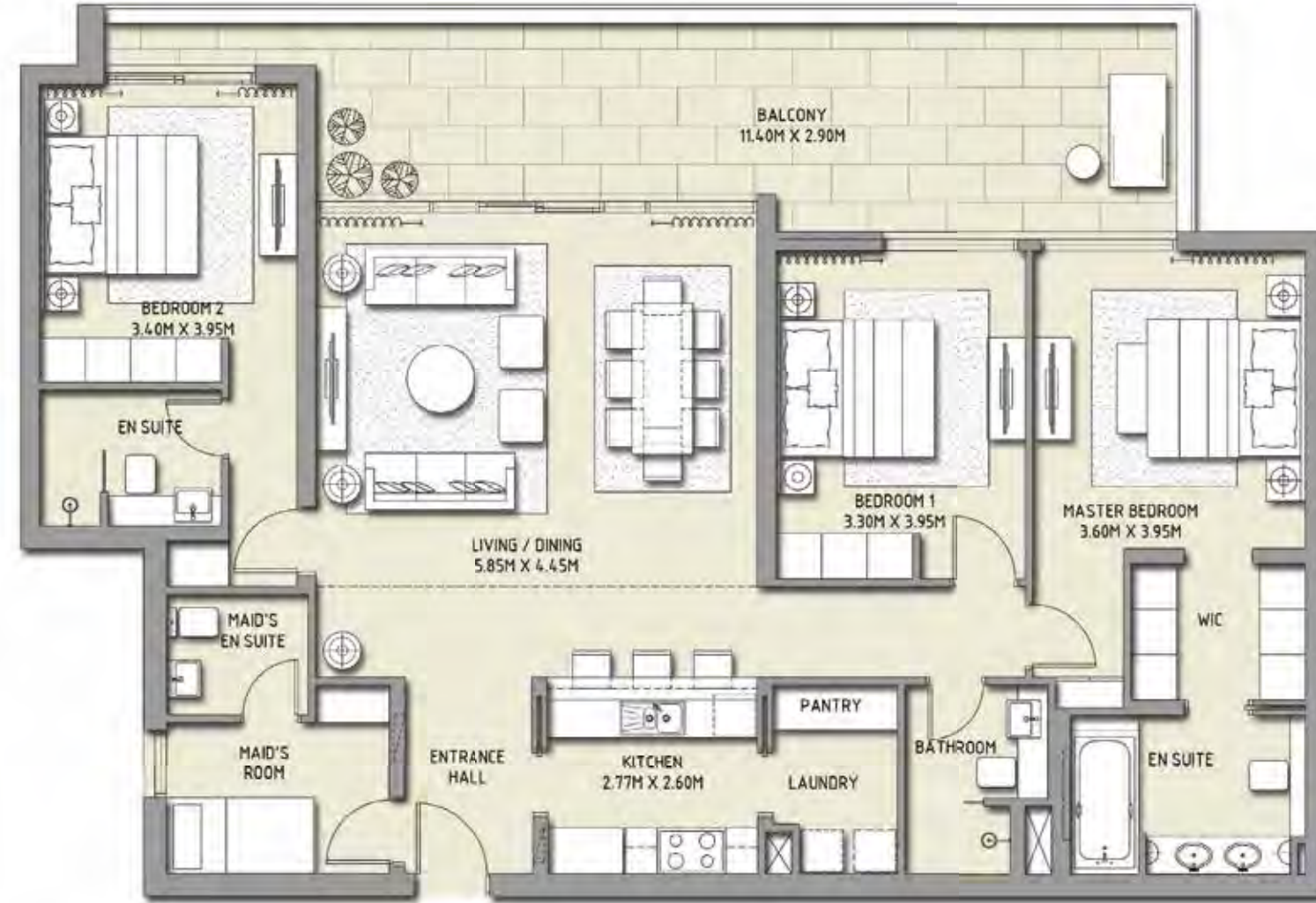
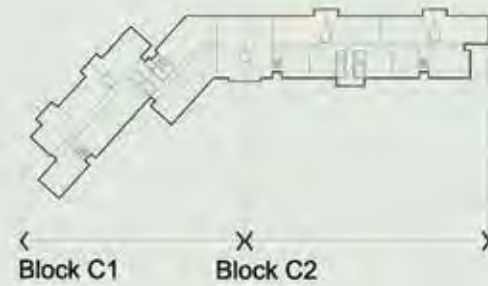
Disclaimer: 1. All room dimensions are measured to structural elements and exclude wall finishes and construction tolerances. 2. All dimensions have been provided by our consultant architects. 3. All materials, dimensions & drawings are approximate. Information is subject to change without notice. 4. Actual suite area may vary from the stated area. Drawings not to scale. The developer reserves the right to make revisions. 5. Calculation of suite area is measured as the area bounded by the centre line of demising or partition walls separating one unit from another unit, the exterior face of all exterior walls, and the exterior face of the corridor wall enclosing the adjoining unit. 6. Calculation of balcony area is measured as the area bounded by the centre line of demising or partition walls separating one unit from another unit, the outmost face of the enclosing guard and the external face of the unit adjoining the balcony. 7. The units are measured at typical floor in the building. Columns may vary in size depending on the floor level.

3 Bedroom

Units:

C2-101, C2-104

Level 01



SUITE AREA:	148.40 SQ.M (1597.36 SQ.FT)
BALCONY AREA:	34.37 SQ.M (369.96 SQ.FT)
TOTAL AREA:	182.77 SQ.M (1967.32 SQ.FT)



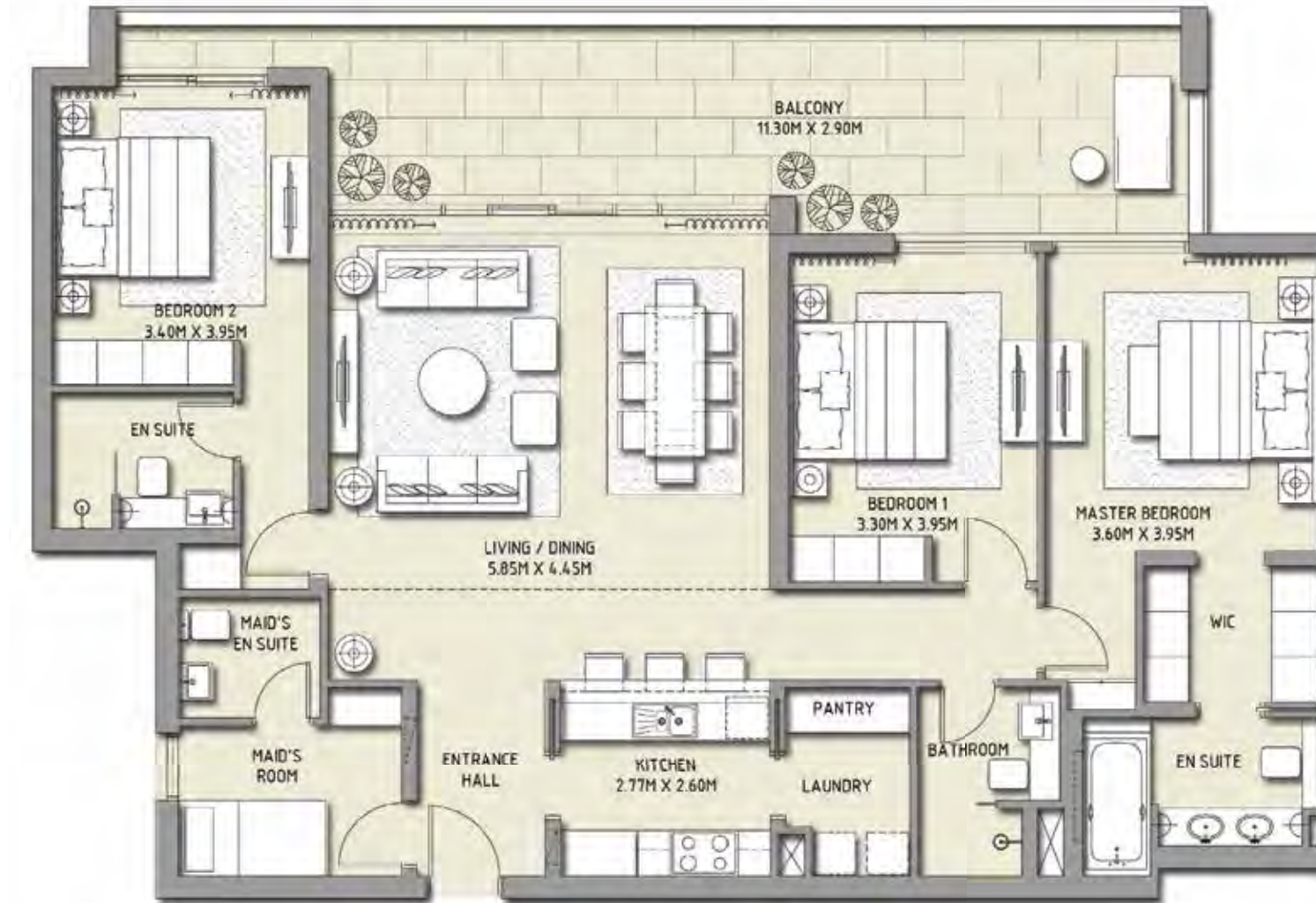
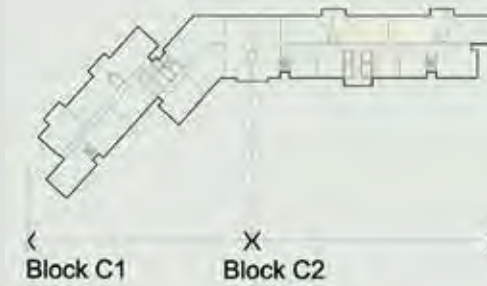
Disclaimer: 1. All room dimensions are measured to structural elements and exclude wall finishes and construction tolerances. 2. All dimensions have been provided by our consultant architects. 3. All materials, dimensions & drawings are approximate. Information is subject to change without notice. 4. Actual suite area may vary from the stated area. Drawings not to scale. The developer reserves the right to make revisions. 5. Calculation of suite area is measured as the area bounded by the centre line of demising or partition walls separating one unit from another unit, the exterior face of all exterior walls, and the exterior face of the corridor wall enclosing the adjoining unit. 6. Calculation of balcony area is measured as the area bounded by the centre line of demising or partition walls separating one unit from another unit, the outmost face of the enclosing guard and the external face of the unit adjoining the balcony. 7. The units are measured at typical floor in the building. Columns may vary in size depending on the floor level.

3 Bedroom

Units:

C2-102, C2-103

Level 01



SUITE AREA:	147.51 SQ.M (1587.78 SQ.FT)
BALCONY AREA:	33.61 SQ.M (361.82 SQ.FT)
TOTAL AREA:	181.12 SQ.M (1949.60 SQ.FT)



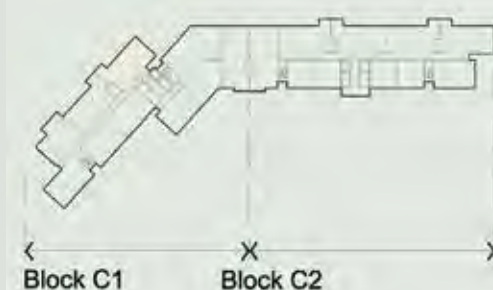
Disclaimer: 1. All room dimensions are measured to structural elements and exclude wall finishes and construction tolerances. 2. All dimensions have been provided by our consultant architects. 3. All materials, dimensions & drawings are approximate. Information is subject to change without notice. 4. Actual suite area may vary from the stated area. Drawings not to scale. The developer reserves the right to make revisions. 5. Calculation of suite area is measured as the area bounded by the centre line of demising or partition walls separating one unit from another unit, the exterior face of all exterior walls, and the exterior face of the corridor wall enclosing the adjoining unit. 6. Calculation of balcony area is measured as the area bounded by the centre line of demising or partition walls separating one unit from another unit, the outmost face of the enclosing guard and the external face of the unit adjoining the balcony. 7. The units are measured at typical floor in the building. Columns may vary in size depending on the floor level.

3 Bedroom

Units:

C1-201

Level 02



SUITE AREA:	148.40 SQ.M (1597.36 SQ.FT)
BALCONY AREA:	39.35 SQ.M (423.61 SQ.FT)
TOTAL AREA:	187.75 SQ.M (2020.97 SQ.FT)



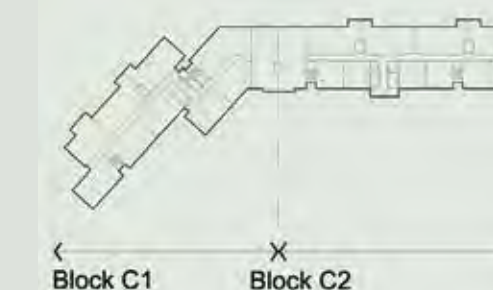
Disclaimer: 1. All room dimensions are measured to structural elements and exclude wall finishes and construction tolerances. 2. All dimensions have been provided by our consultant architects. 3. All materials, dimensions & drawings are approximate. Information is subject to change without notice. 4. Actual suite area may vary from the stated area. Drawings not to scale. The developer reserves the right to make revisions. 5. Calculation of suite area is measured as the area bounded by the centre line of demising or partition walls separating one unit from another unit, the exterior face of all exterior walls, and the exterior face of the corridor wall enclosing the adjoining unit. 6. Calculation of balcony area is measured as the area bounded by the centre line of demising or partition walls separating one unit from another unit, the outmost face of the enclosing guard and the external face of the unit adjoining the balcony. 7. The units are measured at typical floor in the building. Columns may vary in size depending on the floor level.

3 Bedroom

Units:

C1-202

Level 02



SUITE AREA:	147.51 SQ.M (1587.78 SQ.FT)
BALCONY AREA:	39.35 SQ.M (423.61 SQ.FT)
TOTAL AREA:	186.86 SQ.M (2011.39 SQ.FT)



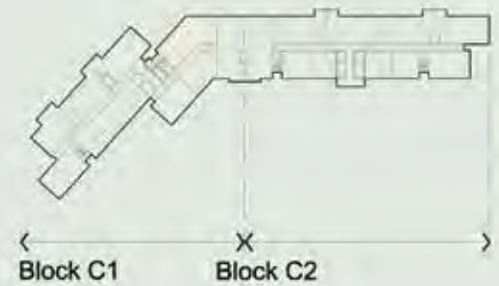
Disclaimer: 1. All room dimensions are measured to structural elements and exclude wall finishes and construction tolerances. 2. All dimensions have been provided by our consultant architects. 3. All materials, dimensions & drawings are approximate. Information is subject to change without notice. 4. Actual suite area may vary from the stated area. Drawings not to scale. The developer reserves the right to make revisions. 5. Calculation of suite area is measured as the area bounded by the centre line of demising or partition walls separating one unit from another unit, the exterior face of all exterior walls, and the exterior face of the corridor wall enclosing the adjoining unit. 6. Calculation of balcony area is measured as the area bounded by the centre line of demising or partition walls separating one unit from another unit, the outmost face of the enclosing guard and the external face of the unit adjoining the balcony. 7. The units are measured at typical floor in the building. Columns may vary in size depending on the floor level.

3 Bedroom

Units:

C1-209, C1-310, C1-410, C1-510, C1-610
C1-710, C1-810, C1-910

Level 02 - 09



SUITE AREA:	170.17 SQ.M (1831.70 SQ.FT)
BALCONY AREA:	28.80 SQ.M (310.00 SQ.FT)
TOTAL AREA:	198.97 SQ.M (2141.70 SQ.FT)



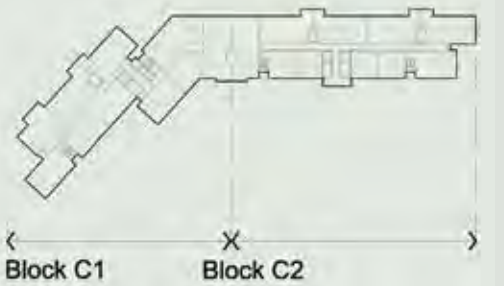
Disclaimer: 1. All room dimensions are measured to structural elements and exclude wall finishes and construction tolerances. 2. All dimensions have been provided by our consultant architects. 3. All materials, dimensions & drawings are approximate. Information is subject to change without notice. 4. Actual suite area may vary from the stated area. Drawings not to scale. The developer reserves the right to make revisions. 5. Calculation of suite area is measured as the area bounded by the centre line of demising or partition walls separating one unit from another unit, the exterior face of all exterior walls, and the exterior face of the corridor wall enclosing the adjoining unit. 6. Calculation of balcony area is measured as the area bounded by the centre line of demising or partition walls separating one unit from another unit, the outmost face of the enclosing guard and the external face of the unit adjoining the balcony. 7. The units are measured at typical floor in the building. Columns may vary in size depending on the floor level.

3 Bedroom

Units:

C2-204, C2-304, C2-404, C2-504, C2-604
C2-704, C2-804, C2-904

Level 02 - 09



SUITE AREA:	148.40 SQ.M (1597.36 SQ.FT)
BALCONY AREA:	17.46 SQ.M (187.96 SQ.FT)
TOTAL AREA:	165.86 SQ.M (1785.32 SQ.FT)



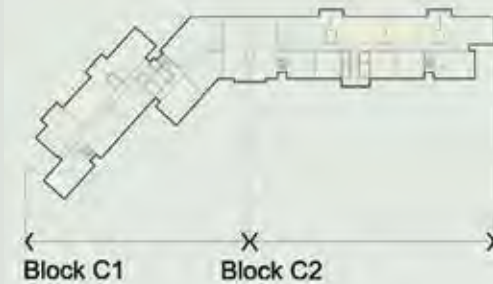
Disclaimer: 1. All room dimensions are measured to structural elements and exclude wall finishes and construction tolerances. 2. All dimensions have been provided by our consultant architects. 3. All materials, dimensions & drawings are approximate. Information is subject to change without notice. 4. Actual suite area may vary from the stated area. Drawings not to scale. The developer reserves the right to make revisions. 5. Calculation of suite area is measured as the area bounded by the centre line of demising or partition walls separating one unit from another unit, the exterior face of all exterior walls, and the exterior face of the corridor wall enclosing the adjoining unit. 6. Calculation of balcony area is measured as the area bounded by the centre line of demising or partition walls separating one unit from another unit, the outmost face of the enclosing guard and the external face of the unit adjoining the balcony. 7. The units are measured at typical floor in the building. Columns may vary in size depending on the floor level.

3 Bedroom

Units:

C2-202, C2-203, C2-302, C2-303, C1-302, C2-402
 C2-403, C1-402, C2-502, C2-503, C1-502, C2-602
 C2-603, C1-602, C2-702, C2-703, C1-702, C2-802
 C2-803, C1-802, C2-902, C2-903, C1-902
 C1-1002, C1-1102, C1-1202

Level 02 - 12



SUITE AREA:	147.51 SQ.M (1587.78 SQ.FT)
BALCONY AREA:	17.46 SQ.M (187.96 SQ.FT)
TOTAL AREA:	164.97 SQ.M (1775.74 SQ.FT)



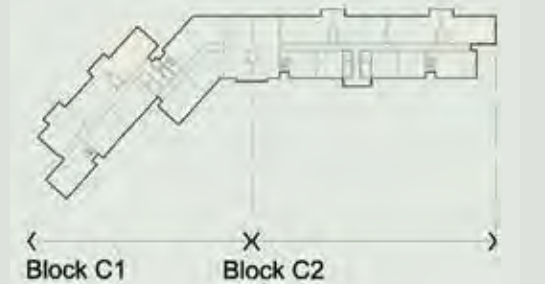
Disclaimer: 1. All room dimensions are measured to structural elements and exclude wall finishes and construction tolerances. 2. All dimensions have been provided by our consultant architects. 3. All materials, dimensions & drawings are approximate. Information is subject to change without notice. 4. Actual suite area may vary from the stated area. Drawings not to scale. The developer reserves the right to make revisions. 5. Calculation of suite area is measured as the area bounded by the centre line of demising or partition walls separating one unit from another unit, the exterior face of all exterior walls, and the exterior face of the corridor wall enclosing the adjoining unit. 6. Calculation of balcony area is measured as the area bounded by the centre line of demising or partition walls separating one unit from another unit, the outmost face of the enclosing guard and the external face of the unit adjoining the balcony. 7. The units are measured at typical floor in the building. Columns may vary in size depending on the floor level.

3 Bedroom

Units:

C2-201, C2-301, C1-301, C2-401, C1-401
 C2-501, C1-501, C2-601, C1-601, C2-701
 C1-701, C2-801, C1-801, C2-901, C1-901
 C1-1001, C1-1101, C1-1201

Level 02 - 12



SUITE AREA:	148.40 SQ.M (1597.36 SQ.FT)
BALCONY AREA:	17.46 SQ.M (187.96 SQ.FT)
TOTAL AREA:	165.86 SQ.M (1785.32 SQ.FT)



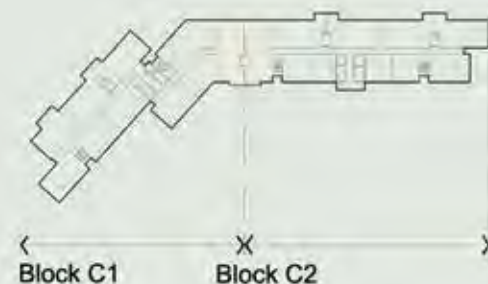
Disclaimer: 1. All room dimensions are measured to structural elements and exclude wall finishes and construction tolerances. 2. All dimensions have been provided by our consultant architects. 3. All materials, dimensions & drawings are approximate. Information is subject to change without notice. 4. Actual suite area may vary from the stated area. Drawings not to scale. The developer reserves the right to make revisions. 5. Calculation of suite area is measured as the area bounded by the centre line of demising or partition walls separating one unit from another unit, the exterior face of all exterior walls, and the exterior face of the corridor wall enclosing the adjoining unit. 6. Calculation of balcony area is measured as the area bounded by the centre line of demising or partition walls separating one unit from another unit, the outmost face of the enclosing guard and the external face of the unit adjoining the balcony. 7. The units are measured at typical floor in the building. Columns may vary in size depending on the floor level.

3 Bedroom

Units:

C1-309, C1-409, C1-509, C1-609, C1-709
C1-809, C1-909, C1-1009, C1-1109

Level 03 - 11



SUITE AREA:	167.90 SQ.M (1807.22 SQ.FT)
BALCONY AREA:	30.42 SQ.M (327.43 SQ.FT)
TOTAL AREA:	198.32 SQ.M (2134.65 SQ.FT)



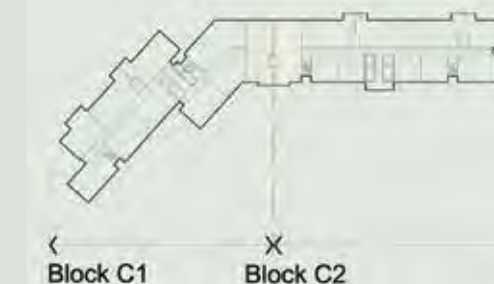
Disclaimer: 1. All room dimensions are measured to structural elements and exclude wall finishes and construction tolerances. 2. All dimensions have been provided by our consultant architects. 3. All materials, dimensions & drawings are approximate. Information is subject to change without notice. 4. Actual suite area may vary from the stated area. Drawings not to scale. The developer reserves the right to make revisions. 5. Calculation of suite area is measured as the area bounded by the centre line of demising or partition walls separating one unit from another unit, the exterior face of all exterior walls, and the exterior face of the corridor wall enclosing the adjoining unit. 6. Calculation of balcony area is measured as the area bounded by the centre line of demising or partition walls separating one unit from another unit, the outmost face of the enclosing guard and the external face of the unit adjoining the balcony. 7. The units are measured at typical floor in the building. Columns may vary in size depending on the floor level.

3 Bedroom

Units:

C2-305, C2-405, C2-505, C2-605, C2-705
C2-805, C2-905, C2-1004, C2-1101

Level 03 - 11



SUITE AREA:	161.69 SQ.M (1740.37 SQ.FT)
BALCONY AREA:	30.42 SQ.M (327.43 SQ.FT)
TOTAL AREA:	192.11 SQ.M (2067.80 SQ.FT)



Disclaimer: 1. All room dimensions are measured to structural elements and exclude wall finishes and construction tolerances. 2. All dimensions have been provided by our consultant architects. 3. All materials, dimensions & drawings are approximate. Information is subject to change without notice. 4. Actual suite area may vary from the stated area. Drawings not to scale. The developer reserves the right to make revisions. 5. Calculation of suite area is measured as the area bounded by the centre line of demising or partition walls separating one unit from another unit, the exterior face of all exterior walls, and the exterior face of the corridor wall enclosing the adjoining unit. 6. Calculation of balcony area is measured as the area bounded by the centre line of demising or partition walls separating one unit from another unit, the outmost face of the enclosing guard and the external face of the unit adjoining the balcony. 7. The units are measured at typical floor in the building. Columns may vary in size depending on the floor level.