

DUBAI HILLS
ESTATE

MAPLE III

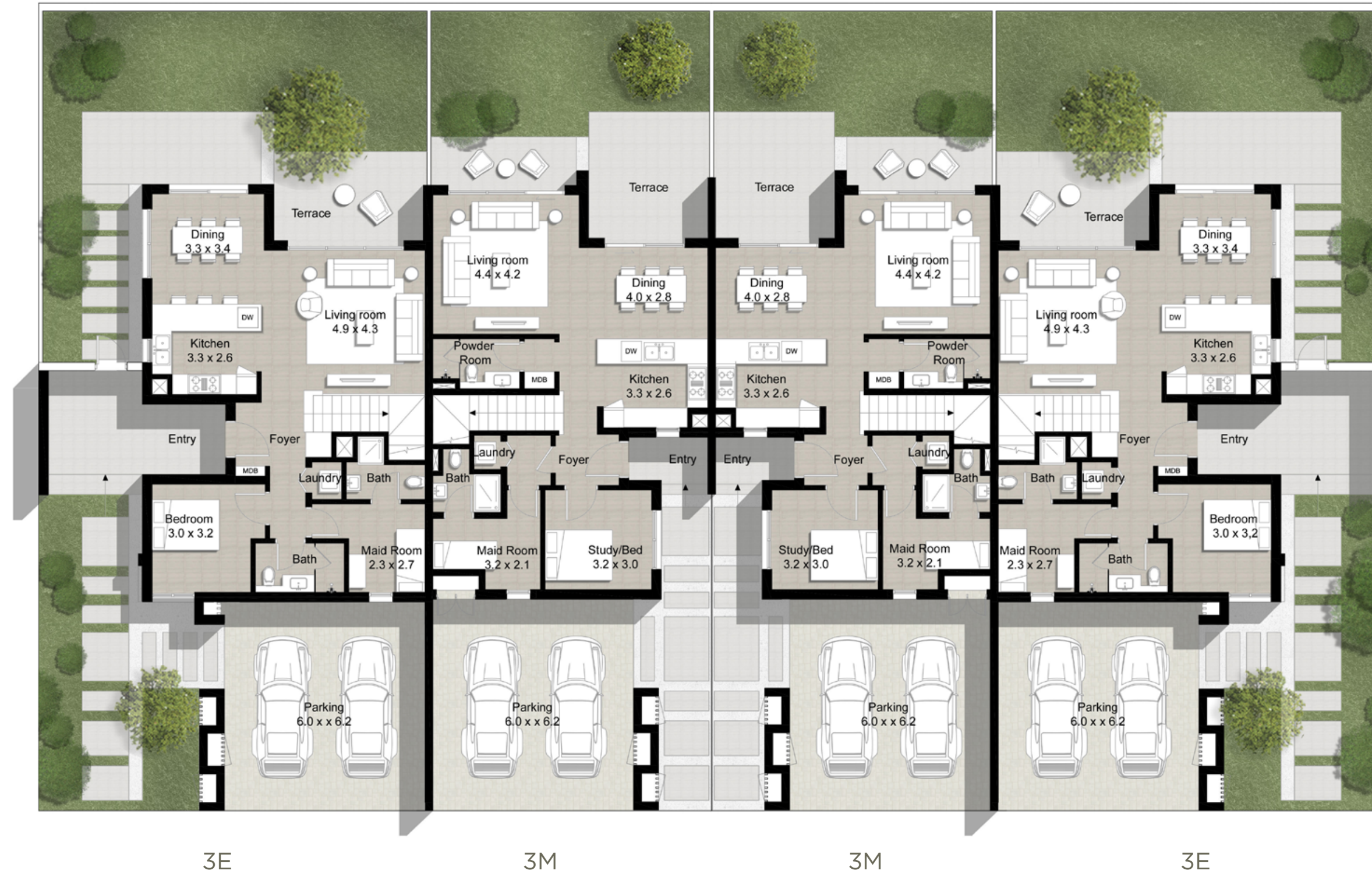
FLOOR PLANS

TYPE 3

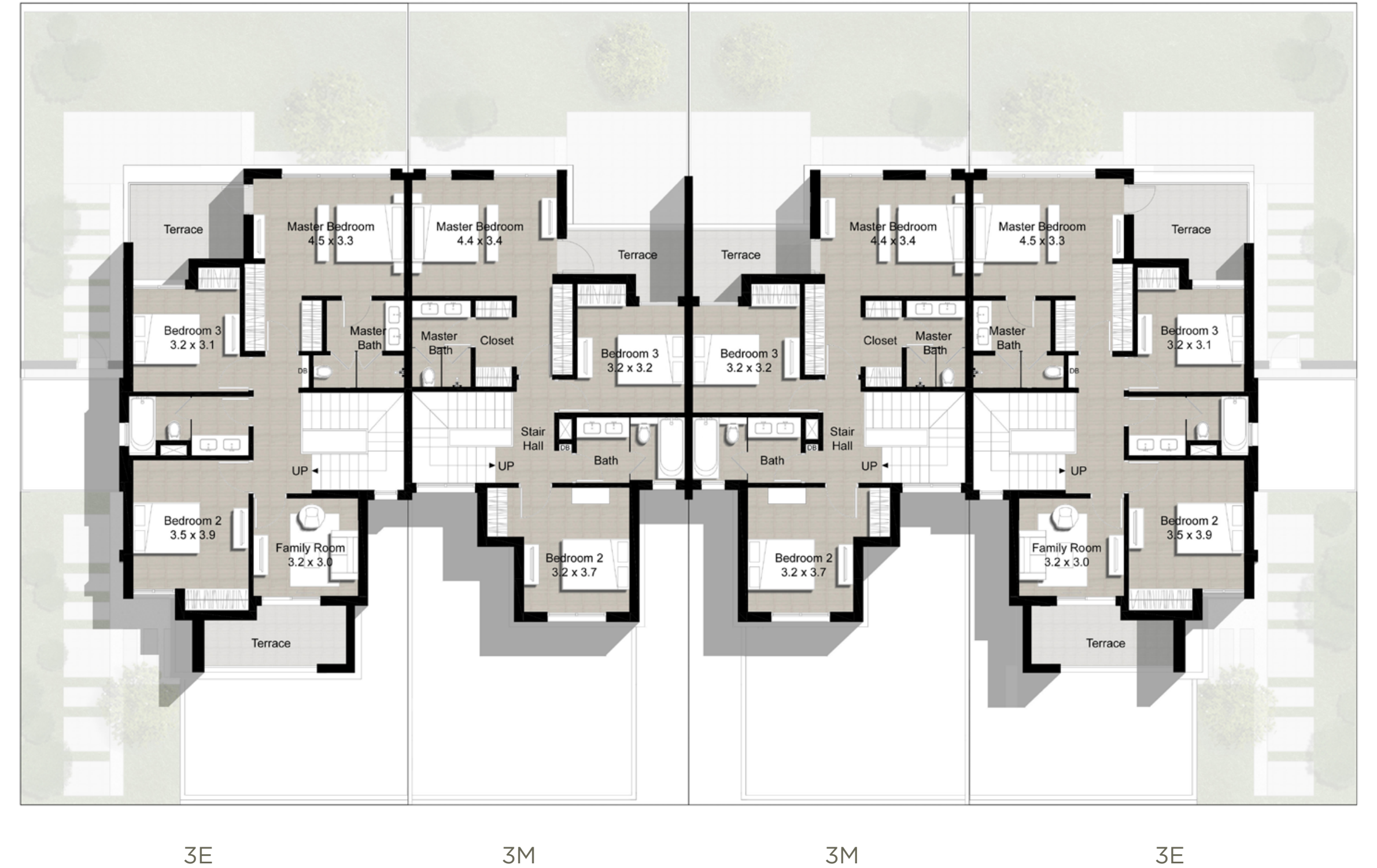
Cluster of 4 Units

Unit 3E
5 Bedroom
Total Area: 2,726 sq ft

Unit 3M
4 Bedroom
Total Area: 2,418 sq ft



Ground Level



Upper Level

MAPLE III

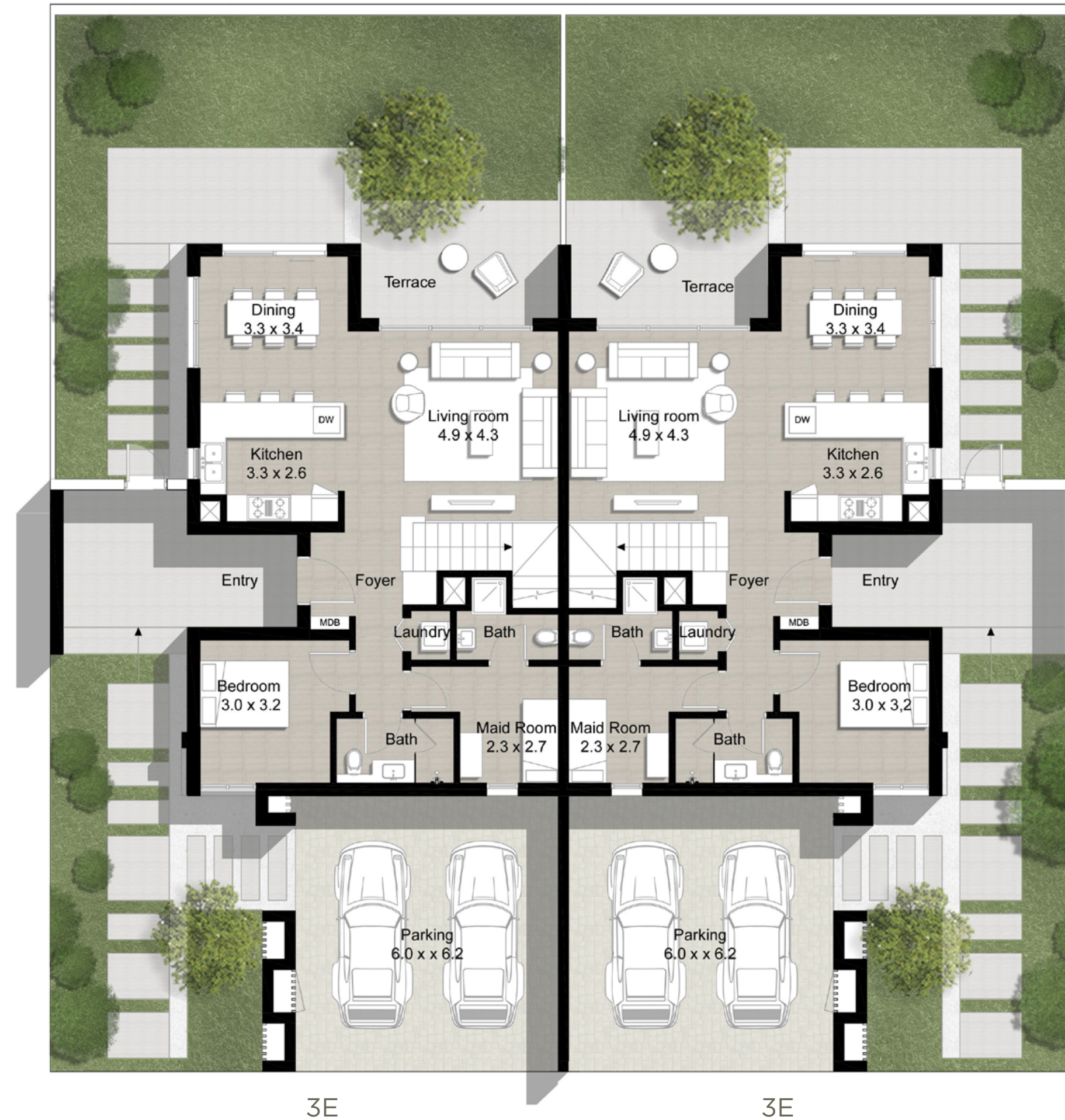
TYPE 3

Cluster of 2 Units

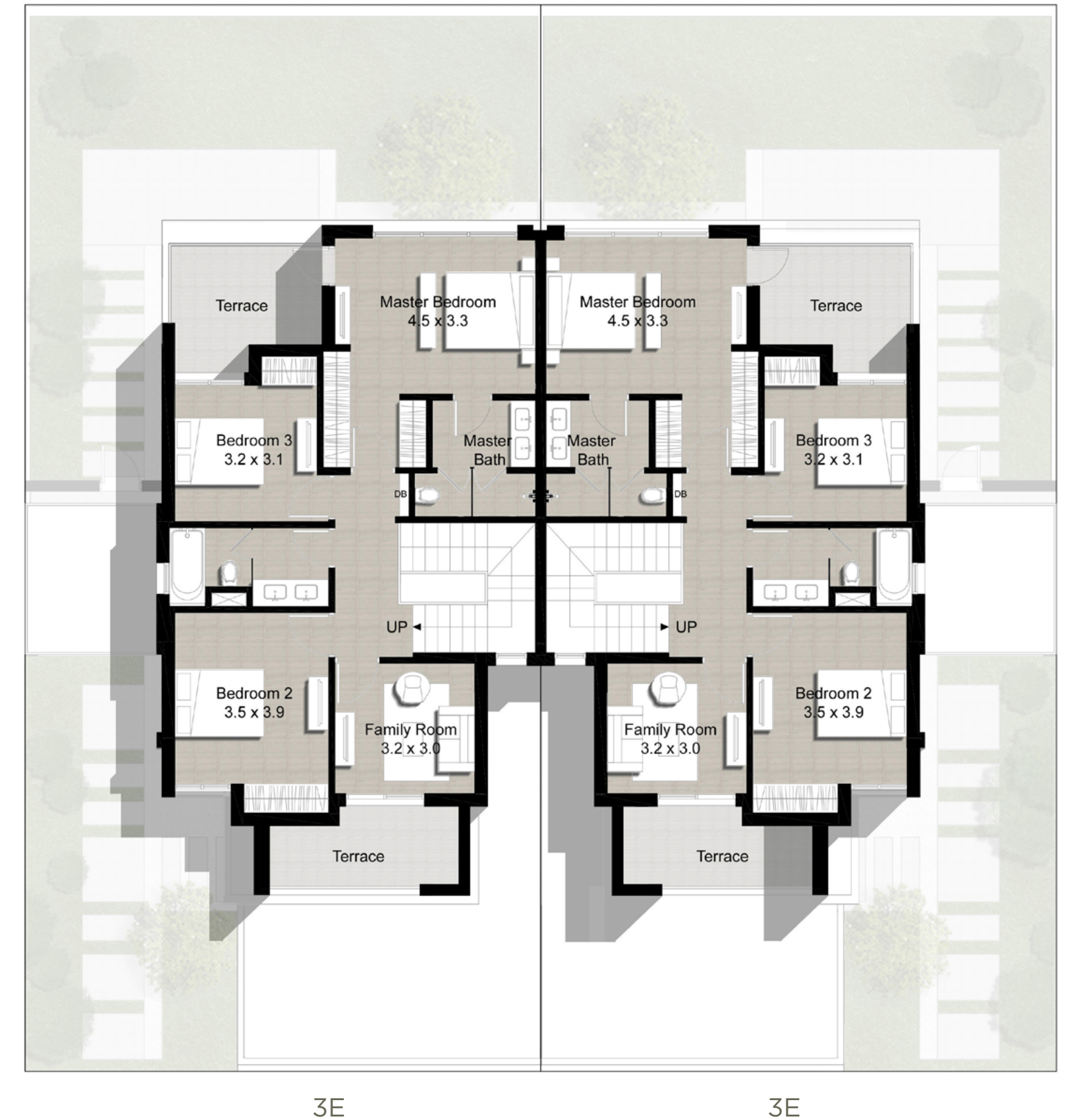
Unit 3E

5 Bedroom

Total Area: 2,726 sq ft



Ground Level



Upper Level

FLOOR PLAN 1. All dimensions are in imperial and metric, and measured from finish to finish excluding construction tolerances. 2. All materials, dimensions, and drawings are approximate only. 3. Information is subject to change without notice, at developer's absolute discretion. 4. Actual area may vary from the stated area. 5. Drawings not to scale. 6. All images used are for illustrative purposes only and do not represent the actual size, features, specifications, fittings, and furnishings. 7. The developer reserves the right to make revisions / alterations, at its absolute discretion, without any liability whatsoever.

TYPE 2

Cluster of 4 Units

Unit 2E
4 Bedroom
Total Area: 2,471 sq ft

Unit 2M
3 Bedroom
Total Area: 2,266 sq ft



Ground Level



Upper Level

MAPLE III

TYPE 2

Cluster of 2 Units

Unit 2E

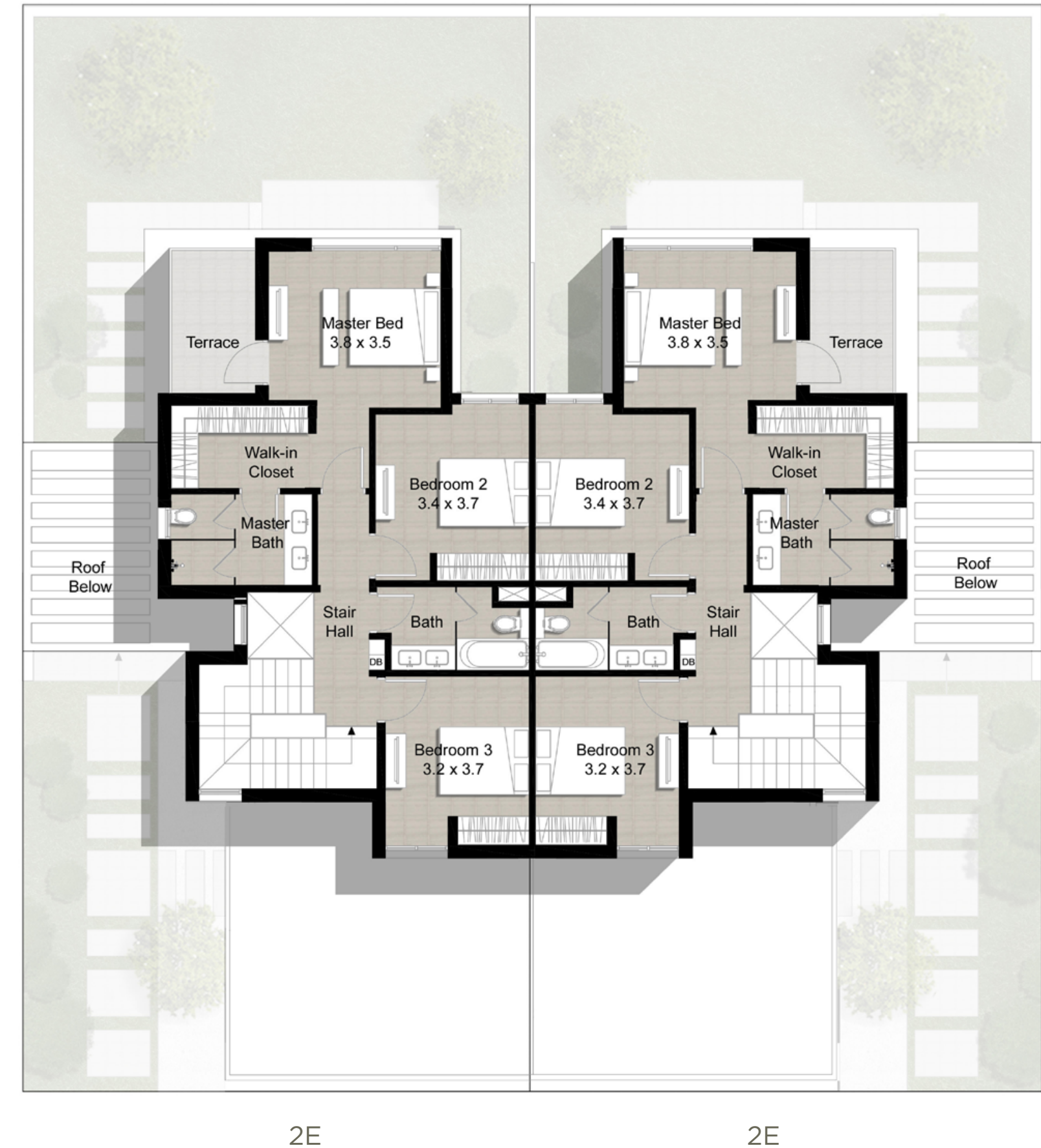
4 Bedroom

Total Area: 2,471 sq ft

DUBAI HILLS ESTATE



Ground Level



Upper Level

FLOOR PLAN 1. All dimensions are in imperial and metric, and measured from finish to finish excluding construction tolerances. 2. All materials, dimensions, and drawings are approximate only. 3. Information is subject to change without notice, at developer's absolute discretion. 4. Actual area may vary from the stated area. 5. Drawings not to scale. 6. All images used are for illustrative purposes only and do not represent the actual size, features, specifications, fittings, and furnishings. 7. The developer reserves the right to make revisions / alterations, at its absolute discretion, without any liability whatsoever.